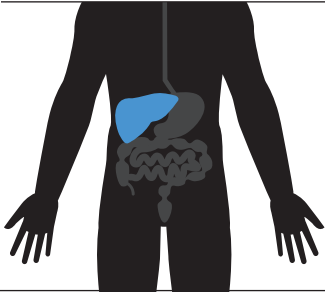
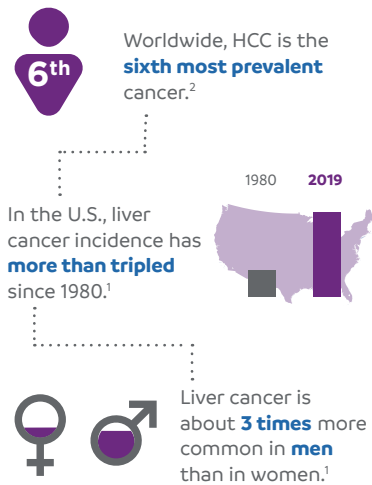


WHAT IS HEPATOCELLULAR CARCINOMA?



HEPATOCELLULAR CARCINOMA (HCC) is the most common type of liver cancer, accounting for about 75% of liver cancer cases in the U.S.¹ According to 2019 annual estimates from the American Cancer Society, **42,000** new cases of liver cancer will be diagnosed and approximately **32,000** people will die from liver cancer.¹

HOW COMMON IS HCC?



QUICK FACTS



The median age at diagnosis in the U.S. is **64** years old.³

This type of liver cancer is the **third leading cause** of cancer-related deaths worldwide.²



HCC related to hepatitis C infection has become the **fastest-rising cause** of cancer-related deaths in the U.S.⁴

Liver cancer is more common in countries in sub-Saharan Africa and Southeast Asia than in the U.S. In many of these countries, it is the **most common** type of cancer.⁵



WHAT ARE THE TREATMENT OPTIONS?⁶

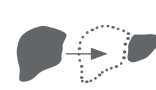
Standard treatment options for patients with HCC include:



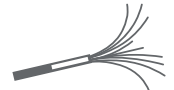
SURVEILLANCE



SURGERY



LIVER TRANSPLANT



ABLATION THERAPY*



EMBOLIZATION THERAPY**



TARGETED THERAPY ***



RADIATION THERAPY

Patients may also receive investigational treatments by participating in a clinical trial.

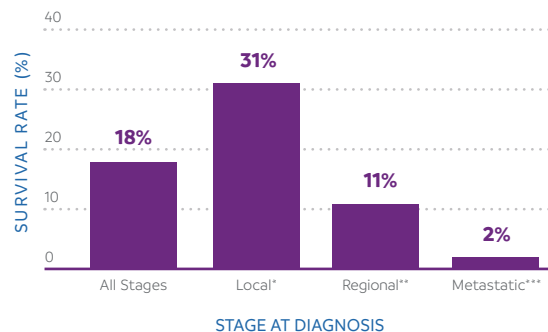
* Destroys body tissue
 ** Use of substances to block or decrease the flow of blood
 *** Use of drugs or other substances to more precisely identify and attack cancer cells

WHAT ARE SOME COMMON RISK FACTORS?¹



WHAT IS THE OUTLOOK?¹

Five-year survival rates by stage at diagnosis:



* The cancer has not spread beyond the liver.
 ** The cancer has spread directly to nearby lymph nodes, tissues or organs.
 *** The cancer has spread to distant parts of the body.

MEDIA CONTACT

Lindsay Treadway
 Public Affairs and Advocacy Relations
 Exelixis, Inc.

(650) 837-7522
ltreadway@exelixis.com



¹ American Cancer Society: Cancer Facts and Figures 2019. (<https://www.cancer.org/content/dam/cancer-org/research/cancer-facts-and-statistics/annual-cancer-facts-and-figures/2019/cancer-facts-and-figures-2019.pdf>). Accessed January 2019. ² Forner A, Llovet JM, Bruix J: Hepatocellular carcinoma. Lancet 379 (9822): 1245-55, 2012. ³ National Cancer Institute. SEER Stat Fact Sheets: Liver and Intrahepatic Bile Duct Cancer. (<https://seer.cancer.gov/statfacts/html/livibd.html>). Accessed January 2019. ⁴ Blue Faery. Statistics. (<http://www.bluefaery.org/statistics/>). Accessed January 2019. ⁵ American Cancer Society. Key Statistics About Liver Cancer. (<https://www.cancer.org/cancer/liver-cancer/about/what-is-key-statistics.html>). Accessed January 2019. ⁶ National Cancer Institute. Adult Primary Liver Cancer Treatment (PDQ®)-Patient Version. (https://www.cancer.gov/types/liver/patient/adult-liver-treatment-pdq#link/_1). Accessed January 2019.