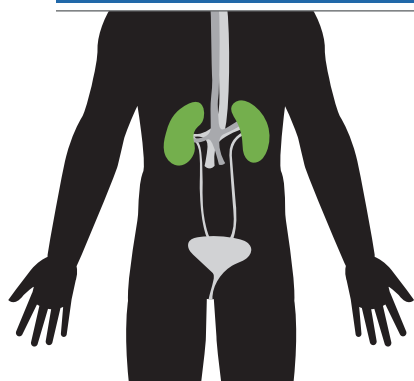
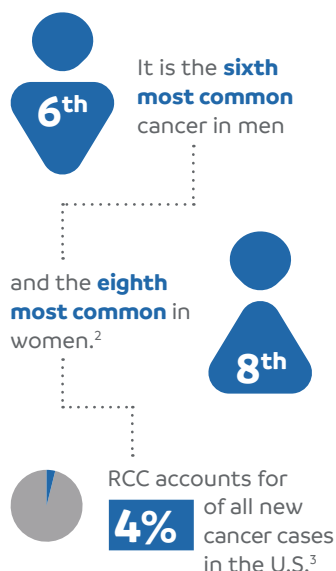


# WHAT IS RENAL CELL CARCINOMA?

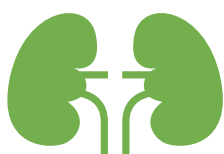


**RENAL CELL CARCINOMA (RCC)** is the most common type of kidney cancer.<sup>1</sup> In 2019, it is estimated that nearly **74,000** new cases will be diagnosed and **15,000** people will die from RCC in the United States.<sup>2</sup>

## HOW COMMON IS RCC?



## QUICK FACTS



**9 out of 10**

cases of kidney cancers are RCC<sup>1</sup>

RCC is about **2x** as common in men as in women<sup>2</sup>



The average age at diagnosis is

**64**<sup>1</sup>

## WHAT ARE THE TREATMENT OPTIONS?

Five types of treatment are typically used in patients with RCC:



SURGERY



RADIATION THERAPY



IMMUNOTHERAPY



TARGETED THERAPY



CHEMOTHERAPY

## WHAT ARE SOME COMMON RISK FACTORS?



SMOKING



GENETICS



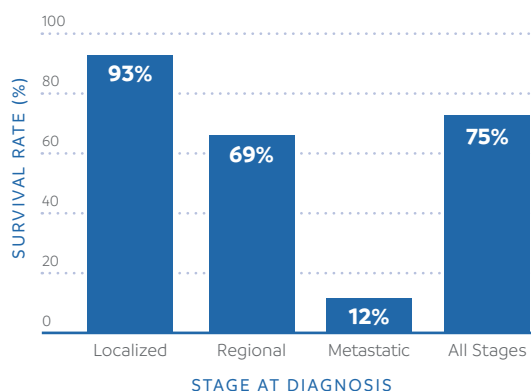
OBESEITY



HIGH BLOOD PRESSURE

## WHAT IS THE OUTLOOK?

Five-year survival rates by stage at diagnosis:



## MEDIA CONTACT

Lindsay Treadway  
Public Affairs  
Exelixis, Inc.

(650) 837-7522  
ltreadway@exelixis.com

**EXELIXIS**<sup>®</sup>

<sup>1</sup>. American Cancer Society. About Kidney Cancer. (<https://www.cancer.org/cancer/kidney-cancer/about/>). Accessed February 2019. <sup>2</sup>. American Cancer Society. Cancer Facts & Figures 2019. (<https://www.cancer.org/content/dam/cancer-org/research/cancer-facts-and-statistics/annual-cancer-facts-and-figures/2019/cancer-facts-and-figures-2019.pdf>). Accessed February 2019. <sup>3</sup>. National Cancer Institute. SEER Stat Fact Sheets: Kidney and Renal Pelvis Cancer. (<http://seer.cancer.gov/statfacts/html/kidrp.html>). Accessed February 2019. <sup>4</sup>. National Cancer Institute. Renal Cell Cancer Treatment - Patient Version ([https://www.cancer.gov/types/kidney/patient/kidney-treatment-pdq#section/\\_50](https://www.cancer.gov/types/kidney/patient/kidney-treatment-pdq#section/_50)). Accessed February 2019.