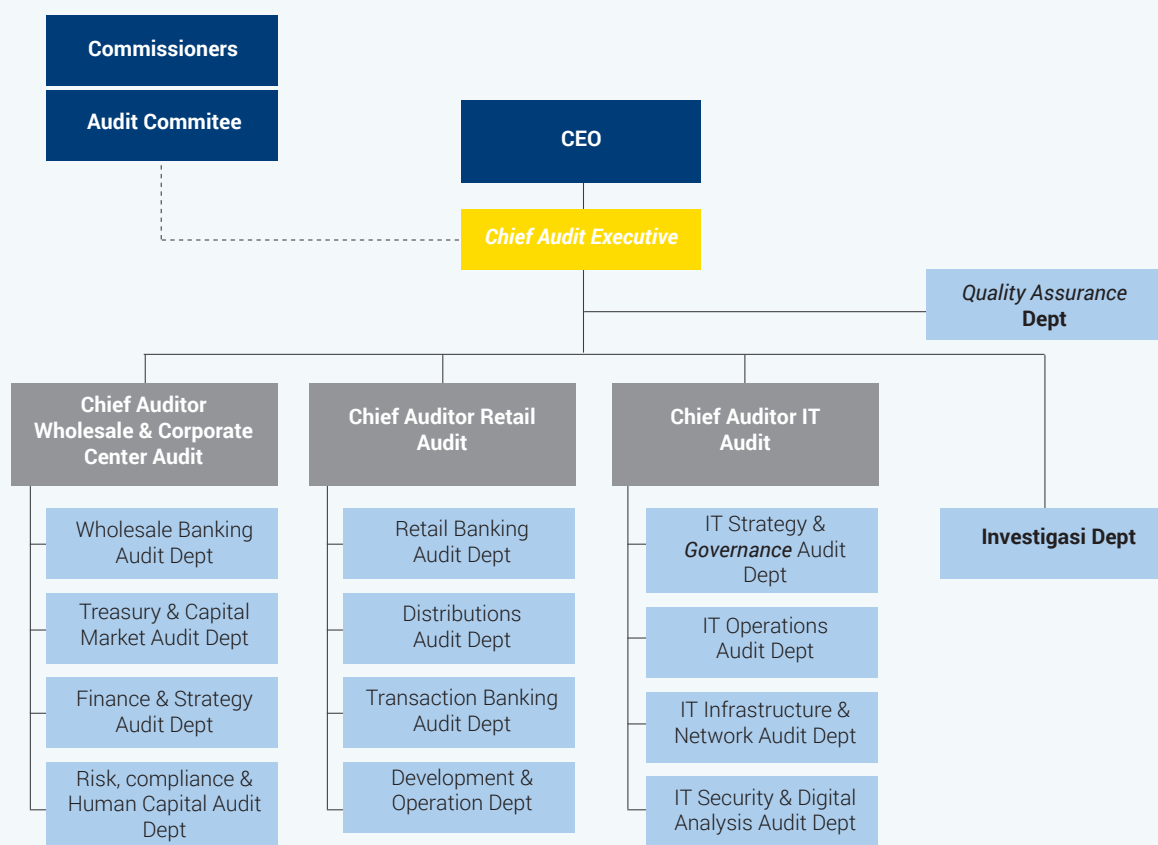


Following the organizational structure of Internal Audit of
Bank Mandiri:



In the structure of the organization, Chief Audit Executive in charge of the Chief Auditor Wholesale & Corporate Center Audit, Chief Auditor Retail Audit, IT Audit Chief Auditor, Quality Assurance, Investigation and Development & Operations.

Appointment and Dismissal of Chief Audit Executive

Chief Audit Executive (CAE) shall be appointed and removed from office and is responsible directly to the Managing Director with the approval of the Board

of Commissioners and/or Audit Committee and subsequently reported to Bank Indonesia and the OJK, the Capital Market Supervisory Agency and Financial Institution.