

Annual Reports and Related Documents::

Issuer & Securities

Issuer/ Manager	WILMAR INTERNATIONAL LIMITED
Securities	WILMAR INTERNATIONAL LIMITED - SG1T56930848 - F34
Stapled Security	No

Announcement Details

Announcement Title	Annual Reports and Related Documents
Date & Time of Broadcast	26-Apr-2016 18:28:57
Status	New
Report Type	Sustainability Report
Announcement Reference	SG160426OTHR90FE
Submitted By (Co./ Ind. Name)	Teo La-Mei
Designation	Company Secretary
Description (Please provide a detailed description of the event in the box below - Refer to the Online help for the format)	Please refer to attached Wilmar's First Quarter 2016 Update Report on its No Deforestation, No Peat, No Exploitation Policy.

Additional Details

Period Ended	31/03/2016
Attachments	📎 Wilmar- First Quarter 2016 Update Report on its No Deforestation No Peat No Exploitation Policy.pdf Total size =618K

Like { 0 Tweet { G+1 0

No Deforestation, No Peat, No Exploitation Policy

Quarter 1 2016 Update

Leading Transformational Change

Supply Chain Mapping & Traceability

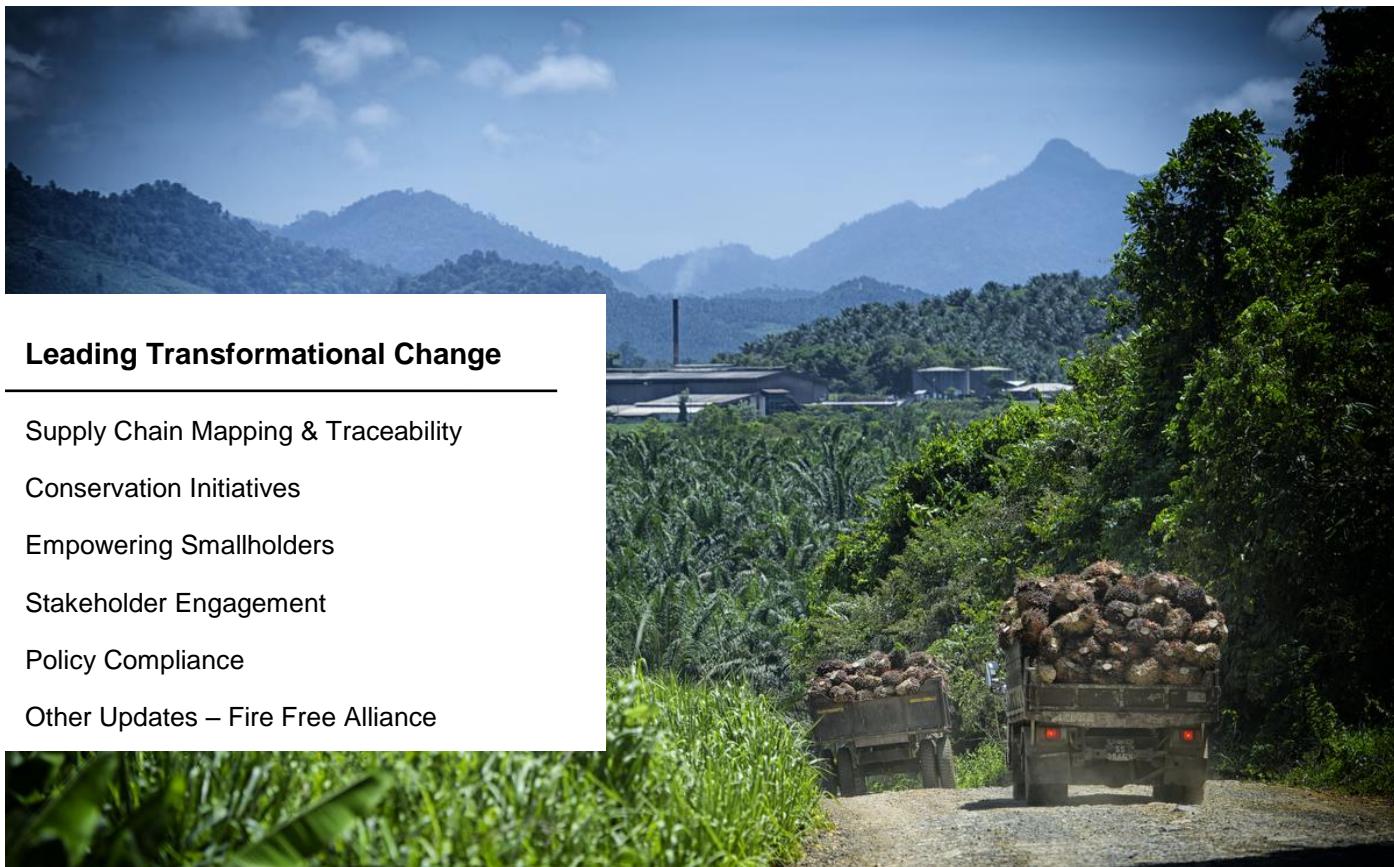
Conservation Initiatives

Empowering Smallholders

Stakeholder Engagement

Policy Compliance

Other Updates – Fire Free Alliance



Supply Chain Mapping & Traceability

Traceability Improvements Across Almost All Our Global Operations

Traceability analysis and summary data continue to be measured across Wilmar's global operations: Indonesia, Malaysia, India, Bangladesh, Sri Lanka, China, Nigeria, Ghana, South Africa, Vietnam, United States of America, Ukraine and Europe. Data for Sania CIE, Ivory Coast has been added to the analysis this quarter.

Traceability data has been updated to include the most recent four quarters, replacing Q4 2014 supplies with Q4 2015 supplies. The data below for all facilities relates to data on supplies and shipments for full year 2015. For China – Specialty Fats, the drop in traceability ratings is due to increased volumes sourced from local and 3rd party suppliers. For China – Oleochemicals, this is mainly due to inclusion of lauric-based fine chemical sourcing for our Shanghai Oleochemical facility since Q4 2015.

A few suspended mills can be found on the latest mill list for our refinery in Europe (Rotterdam). We have checked, and received an official response from our supplier confirming that they have halted purchases from the mills-in-question since mid-2015. As the mills lists are updated on a quarterly basis, and each update covers four calendar quarters, material from mills in the early part of 2015 shall continue to appear on the mill list throughout year 2015.

Indonesia

In total there are 9.17million metric tonnes (mt) of crude palm oil (CPO) and 1.25 million mt of palm kernel oil (PKO) from our Indonesian refineries that are traceable at least to mills.

Refinery	Code	% Traceability			
		Mill		Plantation	
		Palm	Lauric	Palm	Lauric
PT Multimas Nabati Asahan, Kuala Tanjung	MNA, KTJ	99.3	90.5	12.9	14.7
PT Multimas Nabati Asahan, Pulo Gadung	MNA, PG	89.8	-	8.1	-
PT Multimas Nabati Asahan, Paya Pasir	MNA, PPS	-	98.6	-	2.8
PT Multimas Nabati Sulawesi, Bitung	MNS, BTG	98.3	91.8	4.4	9.4
PT Sinar Alam Permai, Kumai	SAP, KMI	100.0	-	36.7	-
PT Sinar Alam Permai, Palembang	SAP, PLG	95.7	98.7	25.4	27.4
PT Usaha Inti Padang, Padang	UIP, PDG	-	97.8	-	23.4
PT Wilmar Cahaya Kalbar, Cikarang	WICA, CKG	-	99.7	-	0.0
PT Wilmar Cahaya Kalbar, Pontianak	WICA, PTK	94.7	95.4	49.7	14.8
PT Wilmar Nabati Indonesia, Bagendang	WINA, BGD	100.0	-	2.6	-
PT Wilmar Nabati Indonesia, Balikpapan	WINA, BLK	81.1	-	13.1	-
PT Wilmar Nabati Indonesia, Dumai	WINA, DMI	86.7	86.2	15.5	0.0
PT Wilmar Nabati Indonesia, Gresik	WINA, GSK	97.0	89.6	15.8	15.3
PT Wilmar Nabati Indonesia, Padang	WINA, PDG	93.0	96.0	23.3	0.0
PT Wilmar Nabati Indonesia, Pelintung	WINA, PLT	95.6	91.5	15.4	15.2

Malaysia

In total, there are 5.90 million mt of CPO and 0.63 million mt of PKO from its Malaysian refineries that are traceable at least to mills.

Refinery	Code	% Traceability			
		Mill		Plantation	
		Palm	Lauric	Palm	Lauric
Bintulu Edible Oils Sdn Bhd, Bintulu	BEO	99.7	99.8	6.9	6.9
Lahad Datu Edible Oils Sdn Bhd, Lahad Datu	LDEO	96.2	95.8	27.8	36.3
Natural Oleochemicals Sdn Bhd, Pasir Gudang	NatOleo	87.5	84.5	-	-
PGEO (Lumut Division) Edible Oils Sdn Bhd, Lumut	PGEO, Lumut	99.3	-	0.0	-
PGEO Edible Oils Sdn Bhd, Pasir Gudang	PGEO, Pasir Gudang	100.0	100.0	6.9	14.9
PGEO (Prai Division) Edible Oils Sdn Bhd, Prai	PGEO, Prai	95.4	-	4.7	-
Sandakan Edible Oils Sdn Bhd, Sandakan	SEO	100.0	97.4	24.8	20.3
TSH-Wilmar Sdn Bhd, Kunak	TSHW	100.0	100.0	0.3	13.9
Wilmar Edible Oils Sdn Bhd, Butterworth	WEO	90.7	-	3.1	-

India, Bangladesh & Sri Lanka

In total, there are 0.85 million tonnes of palm products and 0.05 million tonnes of lauric products entering the above refineries that are traceable at least to mills.

Refinery	Code	% Traceability	
		Mill	
		Palm	Lauric
Adani Wilmar Limited, Haldia	AWL, Haldia	86.2	-
Adani Wilmar Limited, Kakinada	AWL, Kakinada	70.0	97.2
Adani Wilmar Limited, Mangalore	AWL, Mangalore	91.3	-
Adani Wilmar Limited, Mundra	AWL, Mundra	91.9	97.5
Krishnapatnam Oils and Fats Pvt Ltd, Nellore	KOFL	72.7	-
KOG - KTV Foodstuffs (I) Pvt Ltd, Tuticorin	KOG-KTV	83.4	91.6
KTV Health Food Pvt Ltd, Chennai	KTV	63.0	-
Bangladesh Edible Oil Limited	BEOL	100.0	-
Pyramid Lanka (Private) Limited	PL	98.3	-

China – Specialty Fats

In total, there are 0.32 million mt of palm products and 0.10 million mt of lauric products entering the above refineries in China that are traceable at least to mills.

Refinery	Code	% Traceability	
		Mill	
		Palm	Lauric
Yihai (Guangzhou) Oils & Grains Industries Co Ltd	Guangzhou O&G	14.9	79.1
Kerry Specialty Fats (Shanghai) Ltd	Kerry SF - Shanghai	63.7	92.5
Kerry Oils & Grains (Tianjin) Ltd	Kerry O&G - Tianjin	35.4	84.0
Yihai (Lianyungang) Speciality Fats Industries Co.Ltd	Lianyungang SF	23.2	92.8
Qinhuangdao Goldensea Foodstuff Industries Co Ltd	QHD Goldensea	54.5	57.0
Southseas Oils & Fats Industrial (Chiwan) Ltd	Southseas - Chiwan	25.1	81.7

China – Oleochemicals

In total, there are 0.30 million mt of palm products and 0.08 million mt of lauric products entering the above refineries in China that are traceable at least to mills.

Refinery	Code	% Traceability	
		Mill	
		Palm	Lauric
Wilmar Oleochemical (Dongguan) Co., Ltd	Oleo - Dongguan	65.5	94.5
Wilmar Oleochemical (Lianyungang) Co., Ltd	Oleo - Lianyungang	70.6	61.4
Wilmar Oleochemical (Shanghai) Co., Ltd	Oleo - Shanghai	60.7	33.7
Wilmar Oleochemical (Tianjin) Co., Ltd	Oleo - Tianjin	77.4	90.3

Africa

In total, there are 0.98 million tonnes of palm products and 0.04 million tonnes of lauric products entering the above refineries in Africa that are traceable at least to mills.

Refinery	Code	% Traceability	
		Mill	
		Palm	Lauric
Wilmar Africa Limited	WAL	92.6	100.0
PZ Wilmar Ltd	PZ Wilmar	81.1	-
Wilmar Continental Edible Oils & Fats (Pty) Limited	Wilmar Continental	98.6	90.7
Sania CIE	Sania	99.2	100.0

Europe

In total, there are 0.78 million mt of palm products and 0.13 million mt of lauric products entering the above refineries in Europe that are traceable at least to mills.

Refinery	Code	% Traceability	
		Mill	
		Palm	Lauric
Wilmar Edible Oils GmbH	Brake	99.8	100.0
Wilmar Edible Oils BV	Rotterdam	97.1	93.7
Wilmar Oleochemicals BV	Rozenburg	-	91.5

United States of America

In total, there are 0.11 million mt of palm products entering the above refinery in United States of America that are traceable at least to mills.

Refinery	Code	% Traceability	
		Mill	
		Palm	Lauric
Wilmar Oils & Fats (Stockton) LLC	WOFS	99.9	-

Vietnam

In total, there are 0.28 million mt of palm products entering the above refineries in Vietnam that are traceable at least to mills.

Refinery	Code	% Traceability	
		Mill	
		Palm	Lauric
Calofic Hiep Phuoc	Hiep Phuoc	97.9	-
Calofic Quang Ninh	Quang Ninh	99.1	-

Ukraine

In total, there are 0.19 million mt of palm products and 0.007 million mt of lauric products entering the above refineries in Ukraine that are traceable at least to mills.

Refinery	Code	% Traceability	
		Mill	
		Palm	Lauric
Delta Wilmar CIS Ltd	DW	97.4	91.8

The following graph represents our progress from the time we started traceability reporting back to mills in 2014 to 2015



*Ivory Coast is now included in the Q1 2016 progress report

**Ukraine has been included since Q3 2015 progress report

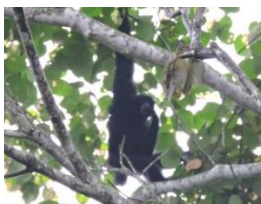
Conservation Initiatives

Gibbon Rehabilitation and Research Partnership on Biodiversity Conservation

Biodiversity Conservation – Gibbon Rehabilitation

Siamang is a species of gibbon found mainly in Peninsular Malaysia and the provinces of Sumatra and Kalimantan in Indonesia. They are categorised as vulnerable to extinction under the International Union for Conservation of Nature (IUCN) Red List of species.

In partnership with the Kalaweit Foundation, Wilmar participated in a rehabilitation programme for rescued Siamangs to be returned to the wild. In March 2015, three pairs of Siamangs were reintroduced into the HCV area within Wilmar's plantation in Sumatra. All three of the initial pairs have since been replaced due to injuries or disappearance.



Lessons learnt from the release of the initial pairs were the need for the Siamangs to be confident and able to withstand intimidation from resident gibbons, the Agile Gibbons. The Kalaweit Foundation have also been releasing Siamang pairs with infants, to encourage them to establish their territories and protect their young. The new pairs will be monitored to ensure that they integrate successfully into their new homes.

Research Partnership with SEARRP on Biodiversity Conservation in Oil Palm Plantations

Wilmar and the South-East Asia Rainforest Research Partnership (SEARRP) signed a Memorandum of Understanding (MoU) on 30 March 2016, to formalise



and expand our collaboration to advance the knowledge and application of sustainable plantation practices in Malaysia, Indonesia and the wider

tropics.

Under the MoU, Wilmar and SEARRP will establish a five-year research and training programme. Both parties commit to support and facilitate research by academics from many leading universities (including the UK universities of York, Oxford, Cambridge, Leeds, Nottingham and Aberdeen and Universiti Malaysia Sabah) with a strong focus on biodiversity conservation and the management of conservation areas within an oil palm plantation landscape. Wilmar and SEARRP will also work together to develop

simplified methods for environmental assessment and monitoring. By deepening the partnership between a leading palm oil processor and one of the foremost research programmes in the tropics, Wilmar and SEARRP aim to make a major contribution to science which is critical to underpinning conservation, sustainability and environmental best practices for the palm oil industry.

Empowering Smallholders

Certification of Independent Smallholders and Programme Development

Progress on Certification of Independent Smallholders

In Indonesia, the Tania Selatan linked smallholders, under the smallholder group "Sapta Tunggal Mandiri" completed their certification audit under the Roundtable for Sustainable Palm Oil (RSPO) Group Certification standards. We are currently still awaiting the final confirmation from the CB on their status. Covering some 6,000 ha and 3,000 smallholder farmers, this will be the single largest group of independent smallholders to be ever RSPO certified to date.

In Malaysia, The Sustainable Palm Oil and Traceability with Sabah small producers (SPOTS) project in Sabah (in partnership with IDH, L'oreal, Clariant, Global Amines, and Wild Asia Smallholder Group) continues



to increase its recruitment of smallholders for RSPO certification, with confirmation of a focus area of the Wilmar Reka Halus

mill supply catchment. A video shoot took place in February of the project and is expected to be publicly launched in Q2 2016.

Engagement with Stakeholders on Smallholder Programmes

Wilmar participated in the USAID initiative SAWIT (Smallholders Advancing with Innovation & Technology) 'Big Think' on 15 March 2016 in Jakarta. The event was to consult on the core smallholder experience and interest in Indonesia to identify the most needed and effective means of interventions to enable sustainability in smallholders. This would be used to develop the objective of a public fund aimed at smallholder action.

We also participated in the RSPO Smallholder strategy development process as one of the co-chairs of the RSPO Smallholder Working Group.

Integrating Smallholders in Traceable, Sustainable and Deforestation-free Supply Chains

Wilmar, in partnership with IDH, Wild Asia and Geotraceability, have launched a project to develop a traceability and farmer performance improvement system which links independent smallholders to off-takers demanding deforestation-free oil, and delivers incentives for all supply chain actors. This will be an industry first.

The project is currently at the modelling stage, where Wilmar's Sapi mill is being used to map out what supply chains typically look like. The prototype model will then be piloted in two of Wilmar's external mill suppliers in Sabah.

Pilot trials will begin later this year.

Stakeholder Engagement

Active Participant in Multi-stakeholder Platforms

Multi- Stakeholder Platforms

Wilmar remains an active participant in a variety of multi-stakeholder platforms that seek to drive transformational change in the palm oil industry.

Tropical Forest Alliance 2020

Wilmar is a steering committee member of the Tropical Forest Alliance 2020 (TFA). In TFA's General Assembly in March, Chief Sustainability Officer, Jeremy Goon, co-chaired a workshop with Solidaridad to devise initiatives to increase the demand for sustainable palm oil in China and India. The workshop was attended by high level representatives from business, government and civil society.



As part of the TFA General Assembly's festivities, Wilmar hosted a field trip to our Sabahmas estate in Sabah, East Malaysia, for TFA members. The objective of the trip was to showcase best practices in palm oil plantation management, including

sustainability considerations. Participants included representatives from the Norwegian Ministry of Climate and Environment, civil society organisations, as well as certification bodies.

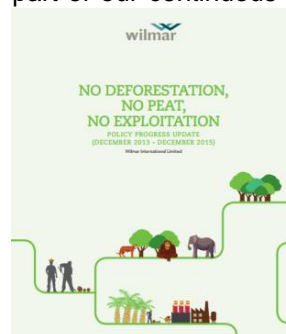


Policy Compliance

Launch of Progress Report, Aggregator Refinery Transformation and Africa Alignment Meeting

No Deforestation, No Peat, No Exploitation Policy Progress Update (Dec 2013 – Dec 2015)

Wilmar released a two-year progress update on the implementation of our No Deforestation, No Peat, No Exploitation Policy on 21 January 2016. This report is part of our continuous efforts to improve transparency



and accountability. It summarises Wilmar's progress towards the aspirations set out in our Integrated Policy, and identifies areas for improvement.

The report is available at this link: [http://www.wilmar-](http://www.wilmar-international.com/wp-content/uploads/2016/01/Wilmar-Policy-Progress-Report-Final.pdf)

[international.com/wp-content/uploads/2016/01/Wilmar-Policy-Progress-Report-Final.pdf](http://www.wilmar-international.com/wp-content/uploads/2016/01/Wilmar-Policy-Progress-Report-Final.pdf)

Aggregator Refinery Transformation (ART) in Indonesia and Malaysia

Wilmar implements the ART approach developed with The Forest Trust (TFT) to improve supplier compliance. ART involves consolidating the results of regional mill assessments into a wider generalised report that is shared to all Wilmar suppliers in the region. Its objective is to provide a collaborative framework of solutions and shared best practices to common issues faced by mills and growers in a region.

In Q1 2016, we completed the Mill Prioritisation Process (MPP) for the mills supplying our refineries in Dumai and Pelintung in Riau, Indonesia. 20 mills will be selected for onsite assessments in the coming 12-18 months. Over in Sarawak, East Malaysia, we have completed three mill assessments so far, and will be

looking to complete the other four assessments before Q4 2016.

In Peninsular Malaysia, the overarching report for the ART process for Pasir Gudang, Malaysia is now available at this link: <http://www.wilmar-international.com/wp-content/uploads/2016/04/PGEO-Overarching-Report.pdf>

African Operations Alignment Meeting

Representatives across Wilmar's business units in Africa met in Calabar, Nigeria in late February to align their understanding of Wilmar's integrated policy, and share their experiences in its implementation. The



meeting was facilitated by our supply-chain partner, The Forest Trust (TFT), and attended by management and operational staff

from plantations, mills and refineries across Africa.

It was a productive and positive meeting, which addressed a wide range of concerns ranging from labour laws to firefighting capability. Focus group discussions also addressed challenges related to traceability, expansion, smallholder engagement and exploitation. A video clip of our TFT partner summarising the meeting is available at this link: <https://www.youtube.com/watch?v=G016i6r9a7o>

Others – Fire Management

Fire Free Alliance

Fire Free Alliance

Recognising that a long term solution is needed to address the fire and haze issue, which is often attributed to land-clearing activities of small farmers, Wilmar has become a founding member of the Fire Free Alliance (FFA). The press release is available at this link:

<http://www.firefreealliance.org/discussion/T76aAAETbrz2GbnpS>

The FFA is a multi-stakeholder platform which aims to aid in the solution to land and forest fires in Indonesia. The focus of the FFA is on the prevention of fires, rather than fire suppression. This is done by implementing the Fire Free Village Programme (FFVP), which consists of engaging local communities with: fire awareness and education, monetary incentives, alternative land clearing methods, agricultural

assistance, and the appointment of a fire crew leader that is trained with the local police.

Wilmar will be piloting the FFVP in three estates each in both Central Kalimantan and South Sumatra.

