

Global Steering Committee

Co-chaired by Trudy Rautio and Wolfgang M. Neumann



**Trudy
Rautio**



**Wolfgang M.
Neumann**



**Simon
Barlow**



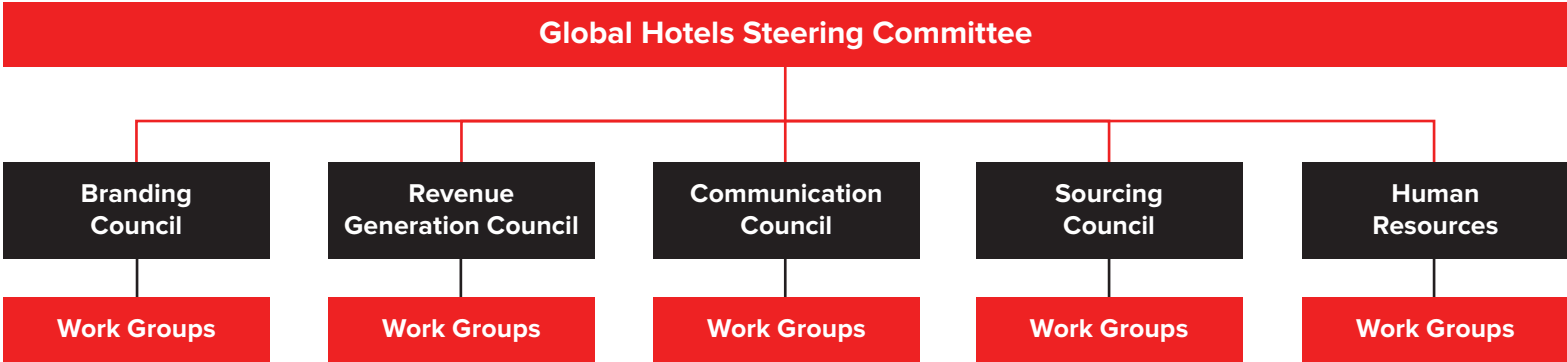
**Thorsten
Kirschke**



**Knut
Kleiven**



**Gordon
McKinnon**



————— The normal governance of the two companies continue to apply —————