



Africa – A Growing Business Region

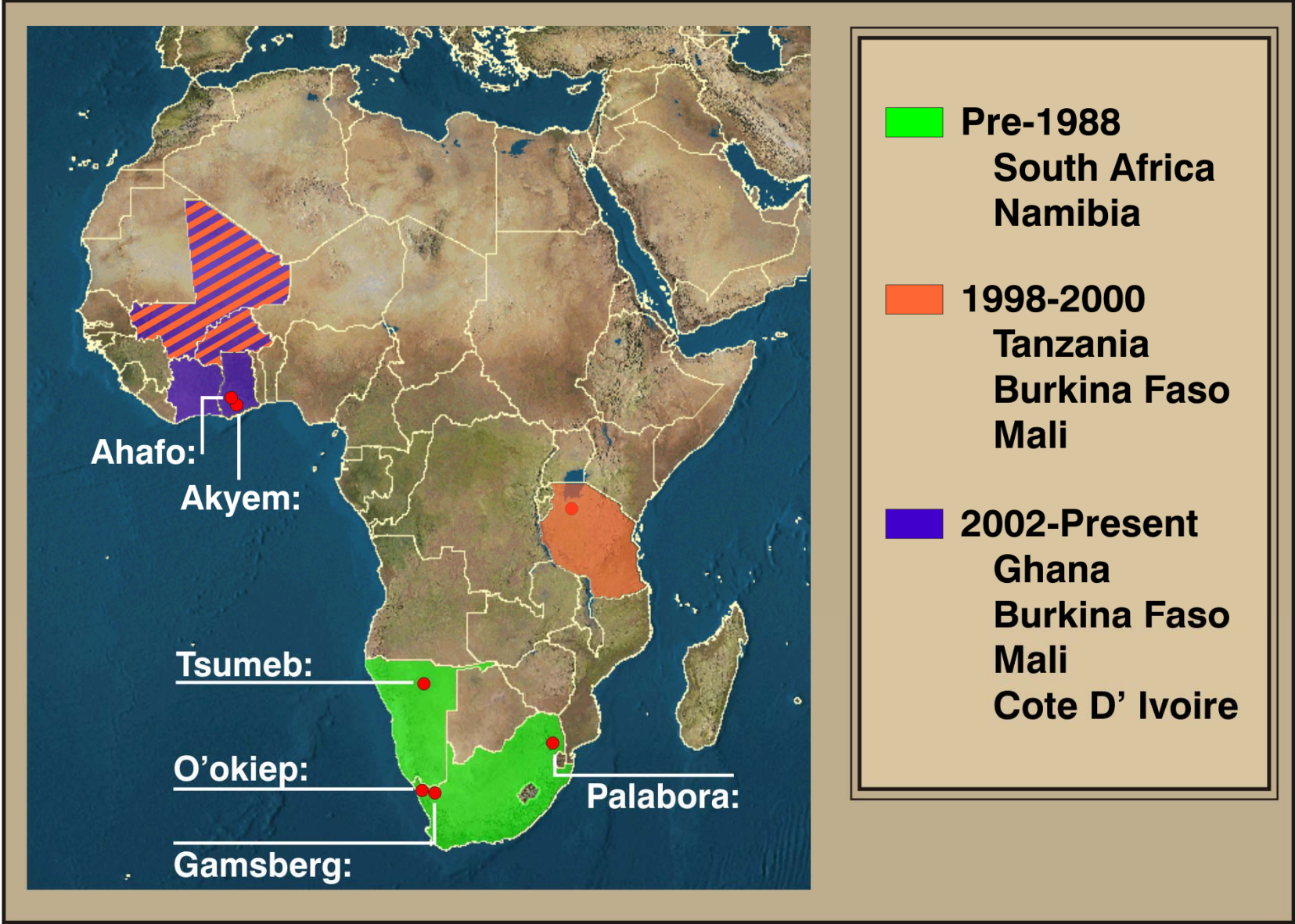
Jeff Huspeni

Vice President, Exploration Business Development

Indaba Conference

February 6, 2007

Newmont's History In Africa



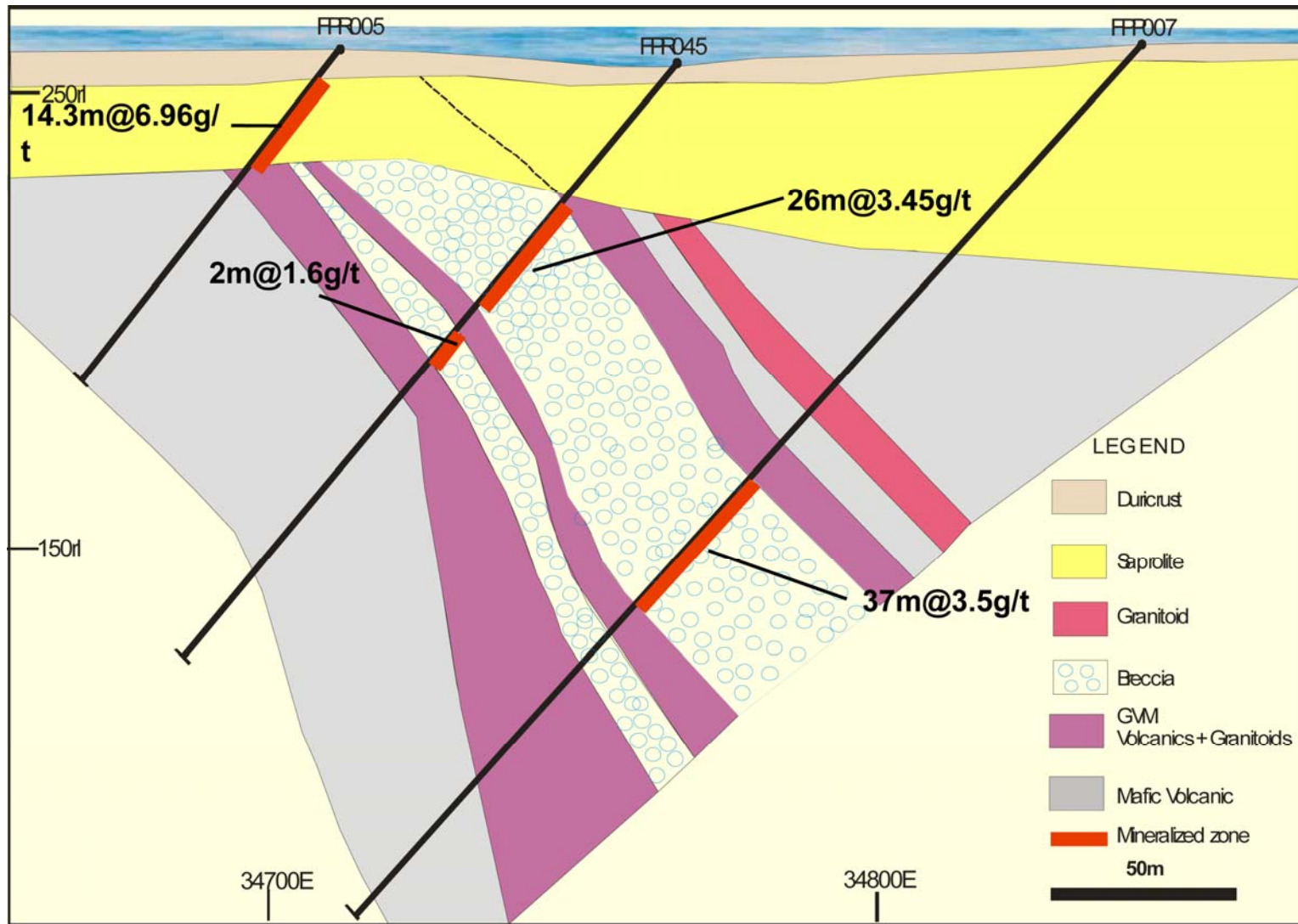
Ahafo Mine



- **Project Completion**
 - Scope, Schedule, Cost
- **Community Support**
- **Start-up and Commissioning**
- **Operating Performance**
- **First Gold – July 18, 2006**

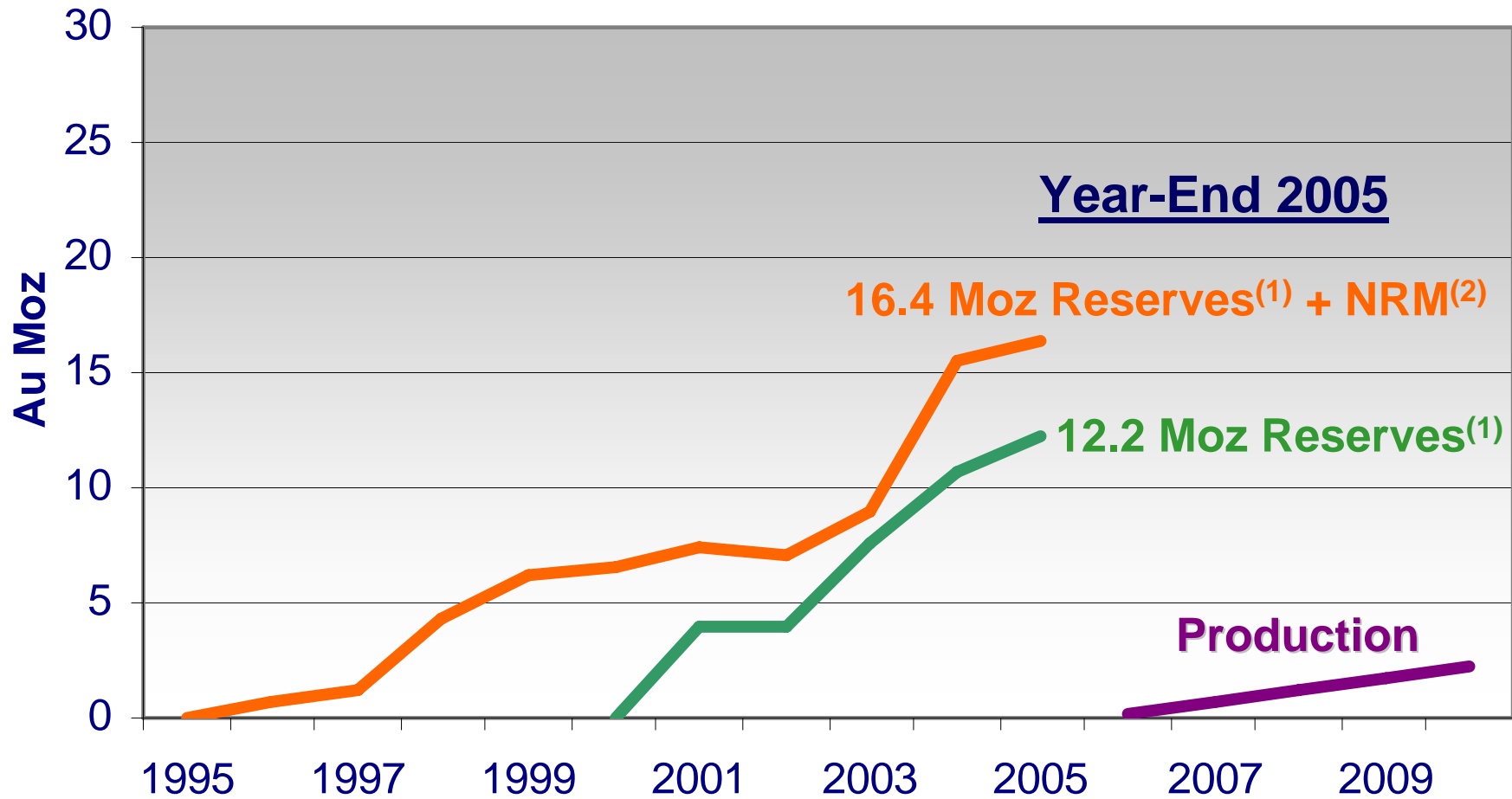


Susuan – New* Discovery From Integrated Exploration



*2005

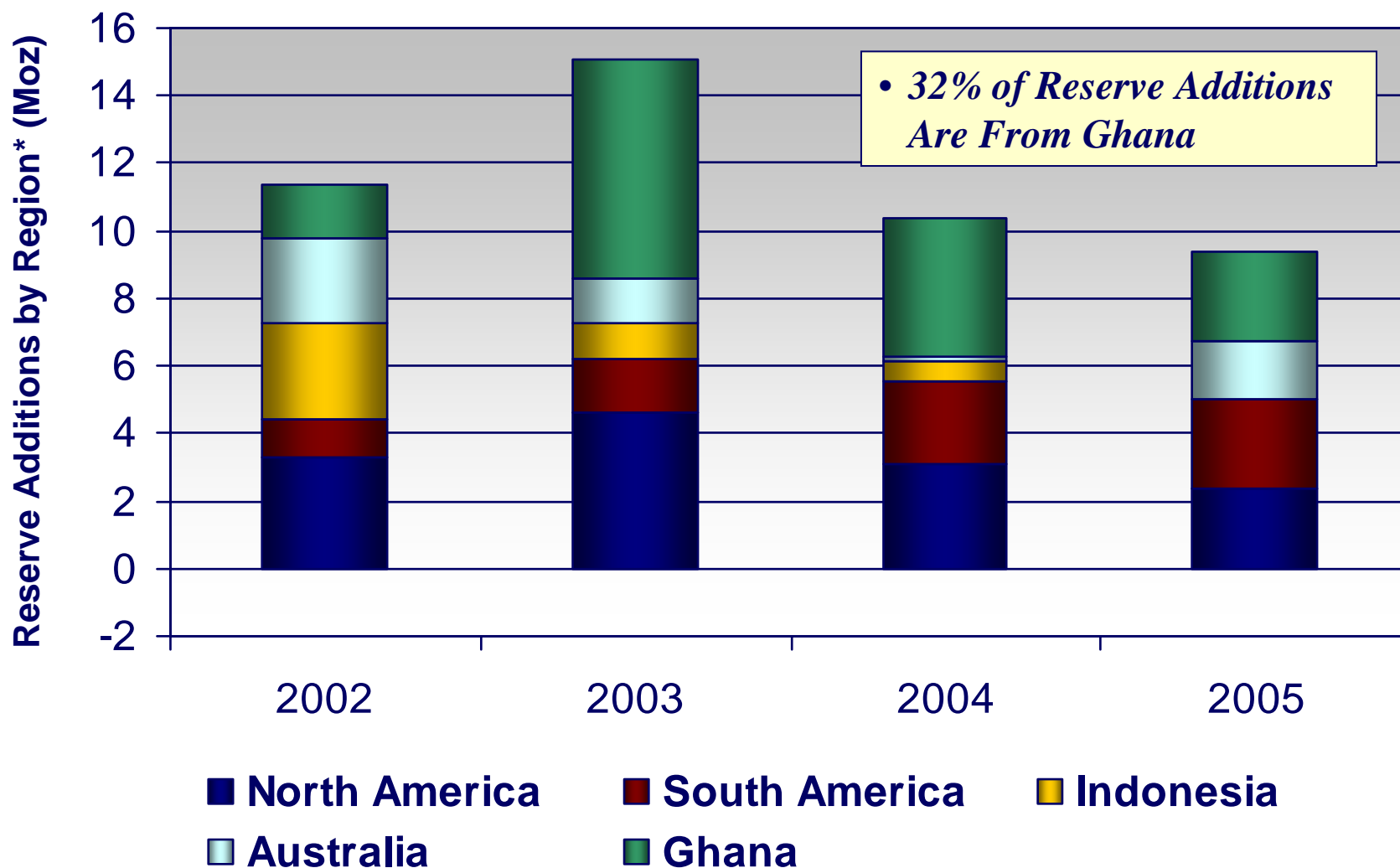
Ahafo Growth



(1) At \$400/oz Au

(2) At \$425/oz Au

Ghana's Contribution To Reserve Growth

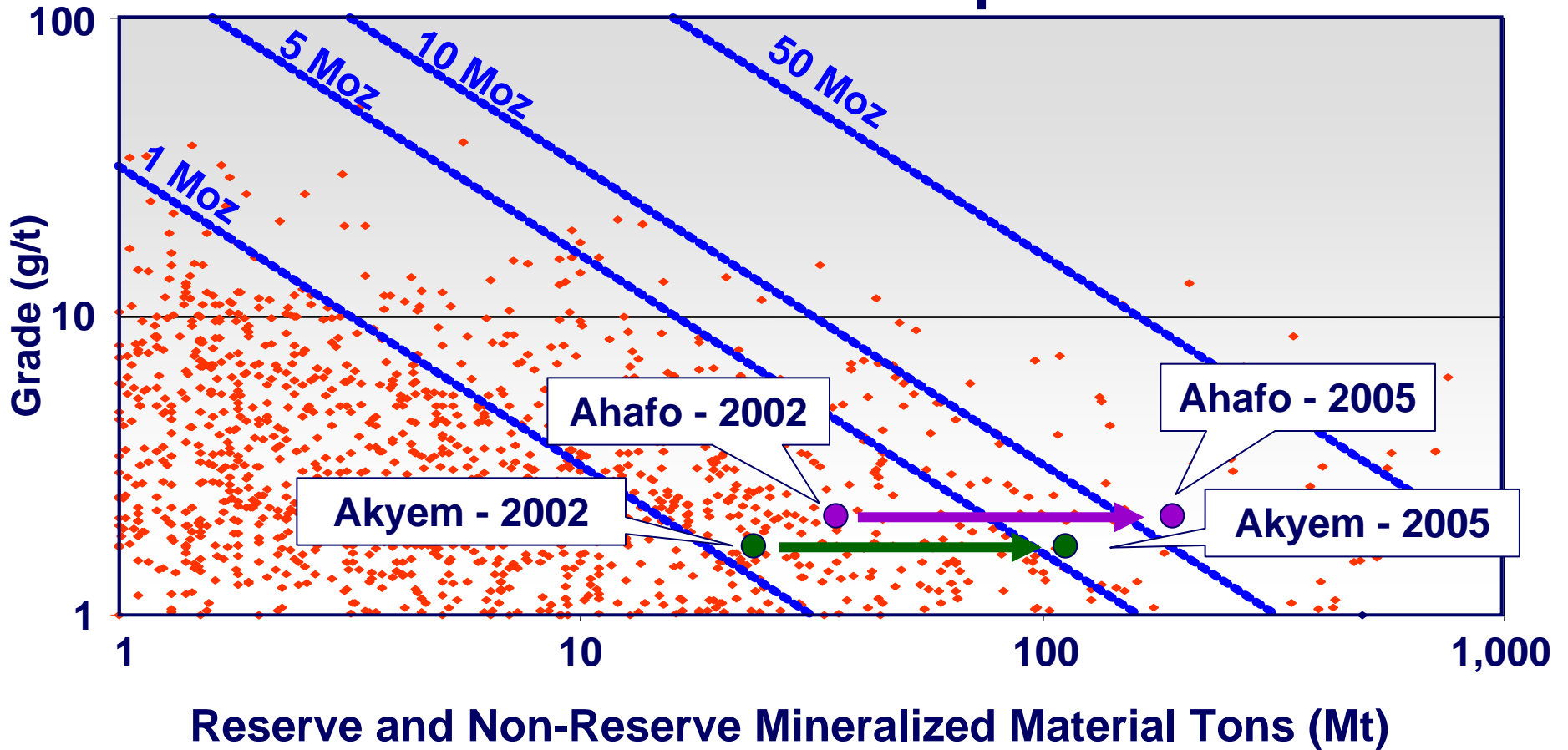


*Excludes acquired ounces

World Quality Assets

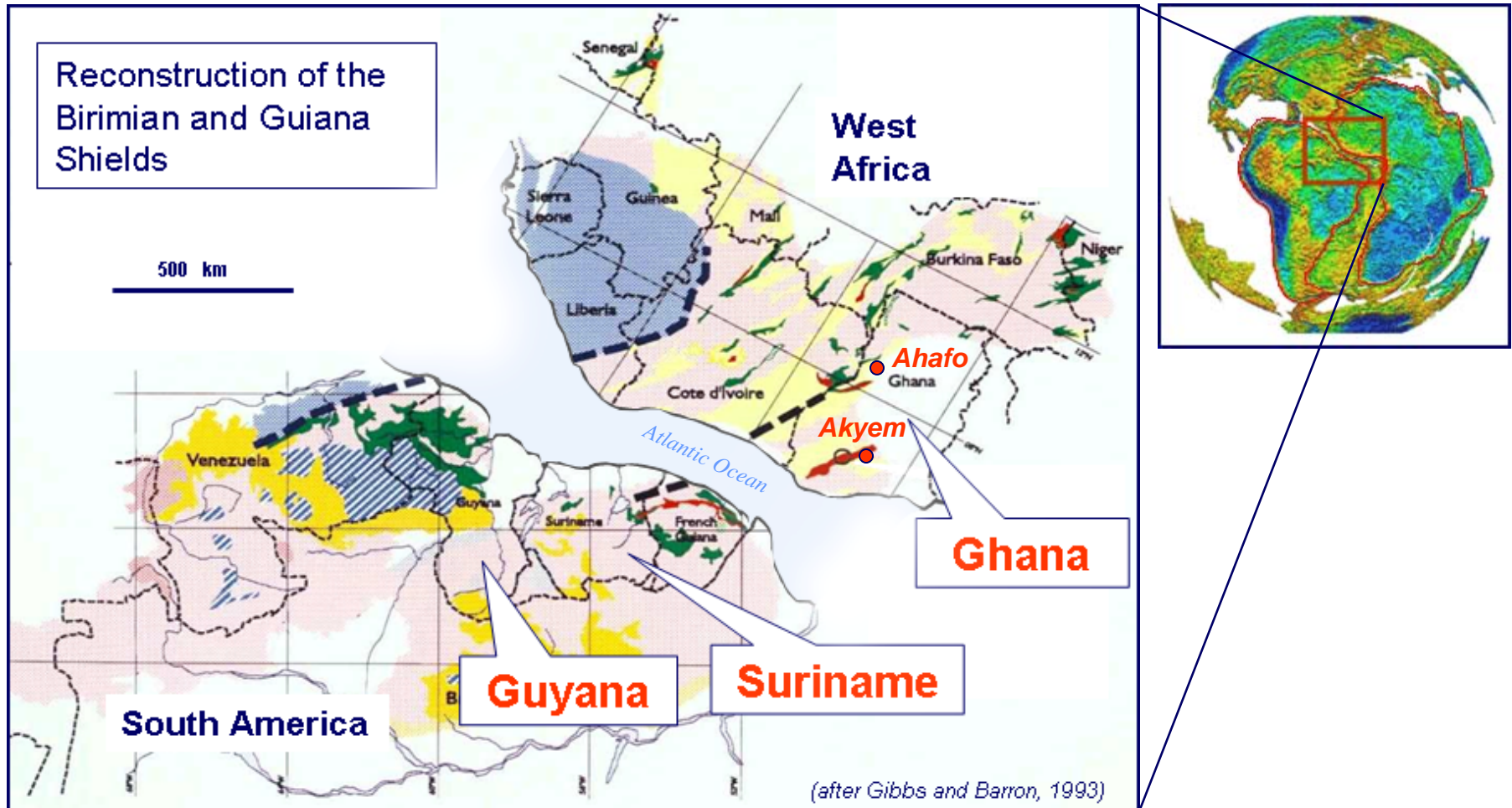


All Known Gold Deposits



Source: Minerals Economics Group

Prospective Terrains – A Common History



2006 Greenfields Exploration Focus



Greenfields Programs: (\$ mm)

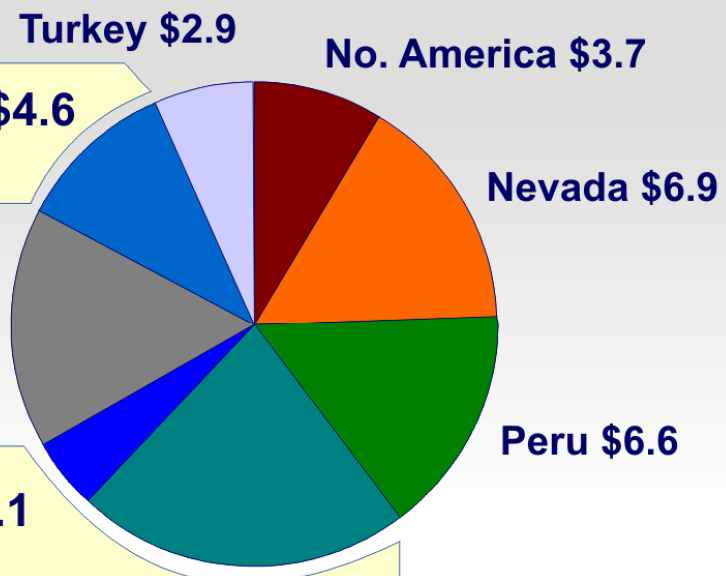
West Africa:
11% of Greenfields Budget

W. Africa \$4.6

Guyana, Suriname:
27% of Greenfields Budget

Guyana \$2.1

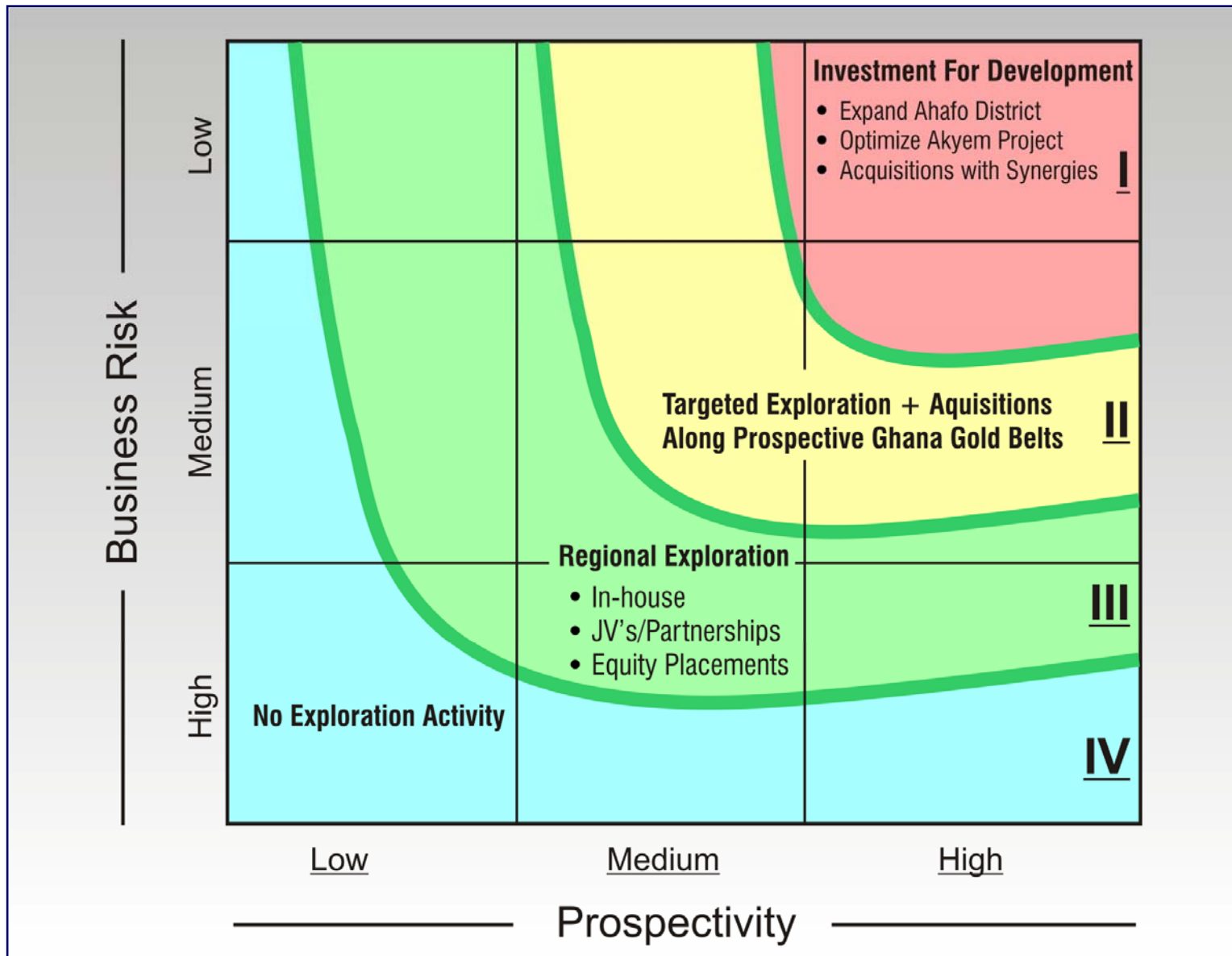
Suriname \$9.6



Total: \$43.3mm*

**Exclusive of Opportunity Funds*

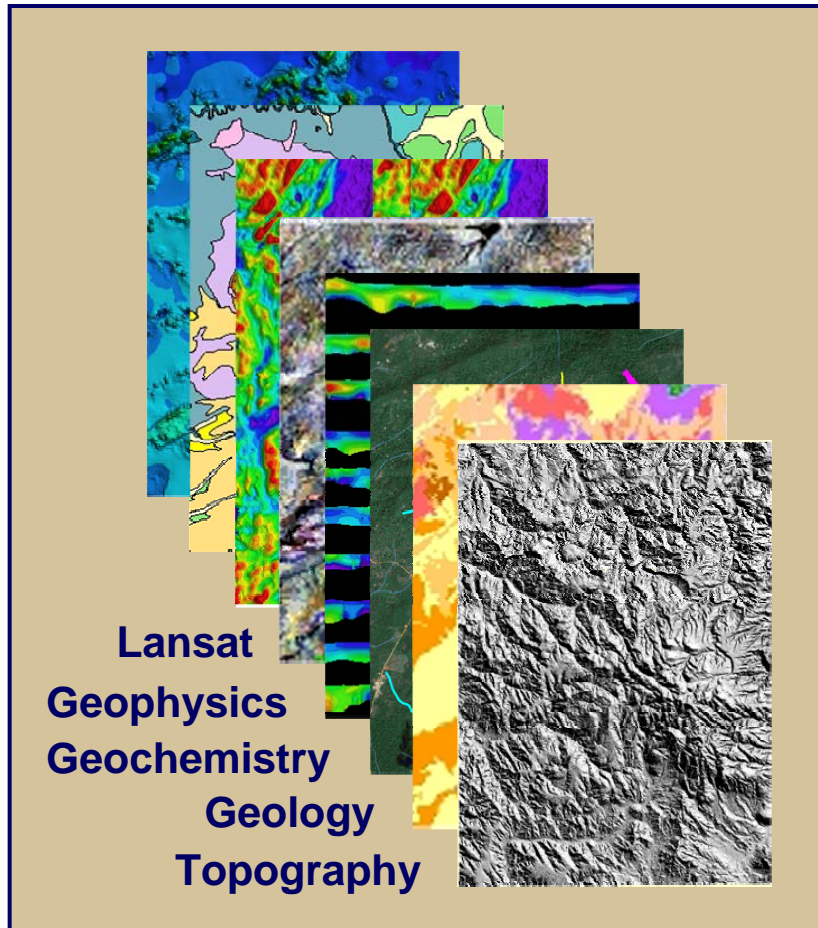
African Business Development



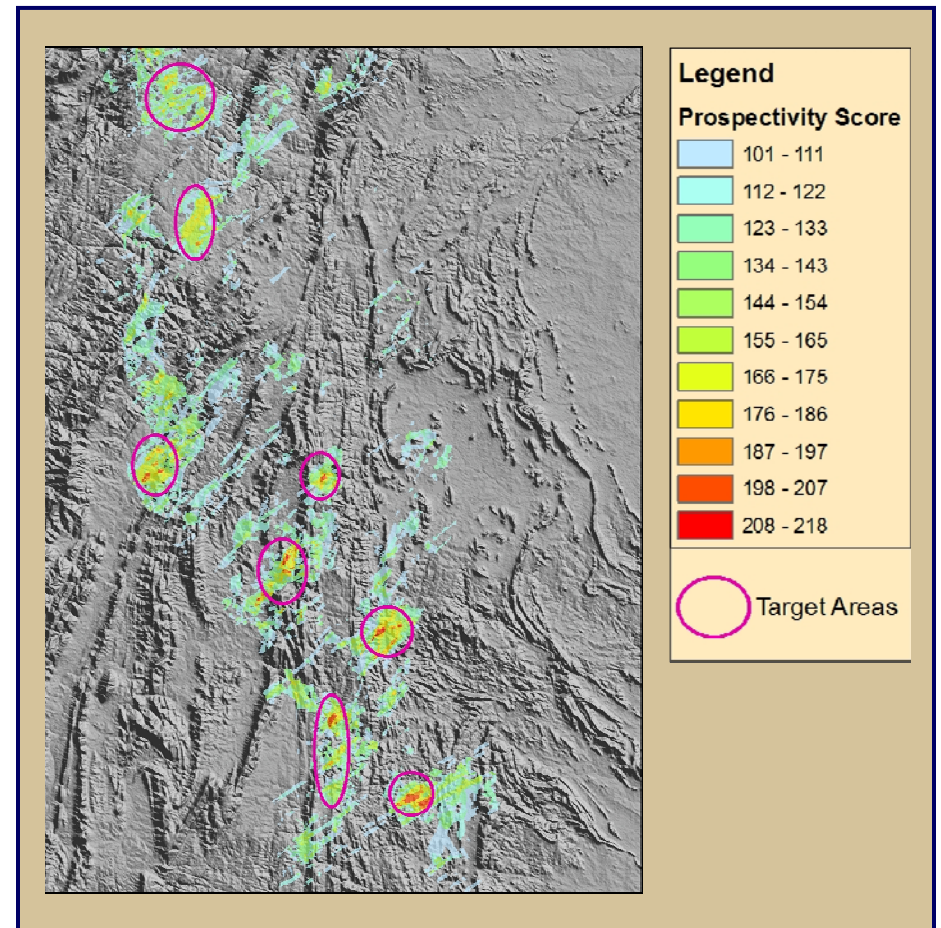
Regional Framework Studies – Focus On Prospectivity



Data Compilation & Interpretation



Prospectivity Analysis



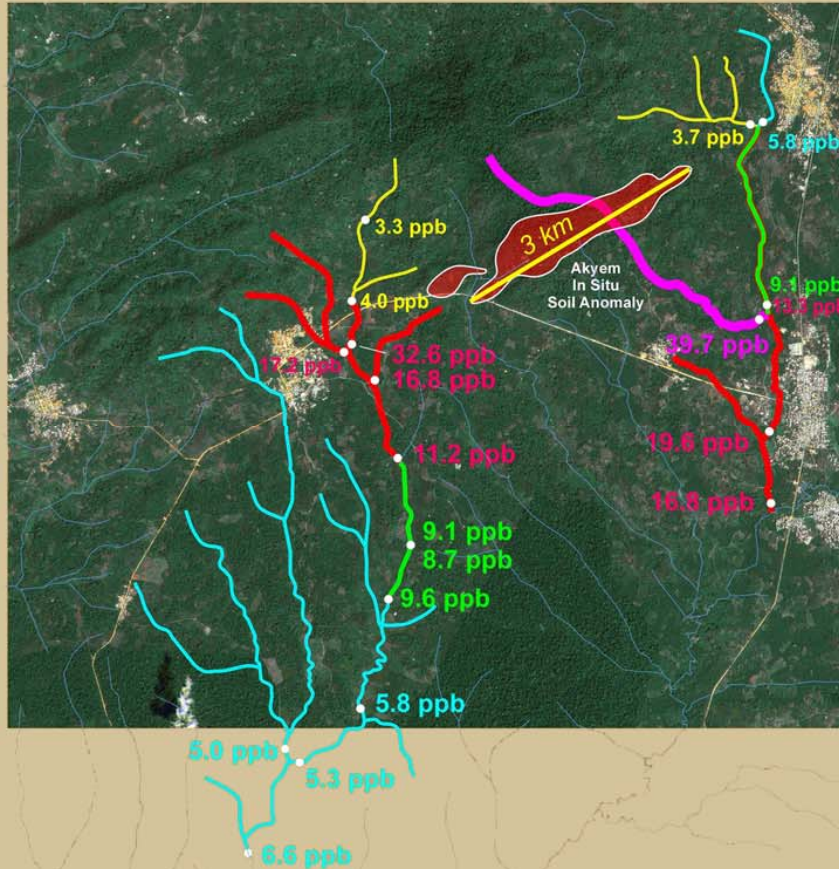
- **Goal : 85% Of Prospectivity In 10% Of The Terrain**

Exploration Tool Box

Proprietary BLEG Technology



Akyem BLEG Orientation Survey



Bill Griffin: BLEG

- Rapid reliable reconnaissance tool
- Ultra-low gold detection and precision
- Notable discoveries: Batu Hijau, Minihasa, Ovacik, Perama Hill, Martabe



Exploration Toolbox

Airborne EM And Magnetics

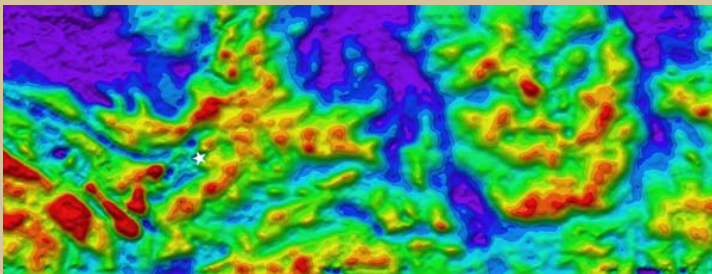


Cees Swager:
Structural
Geology

Resistivity Depth Slice At 50m:

-  <6 ohm meters,
-  >60 ohm meters

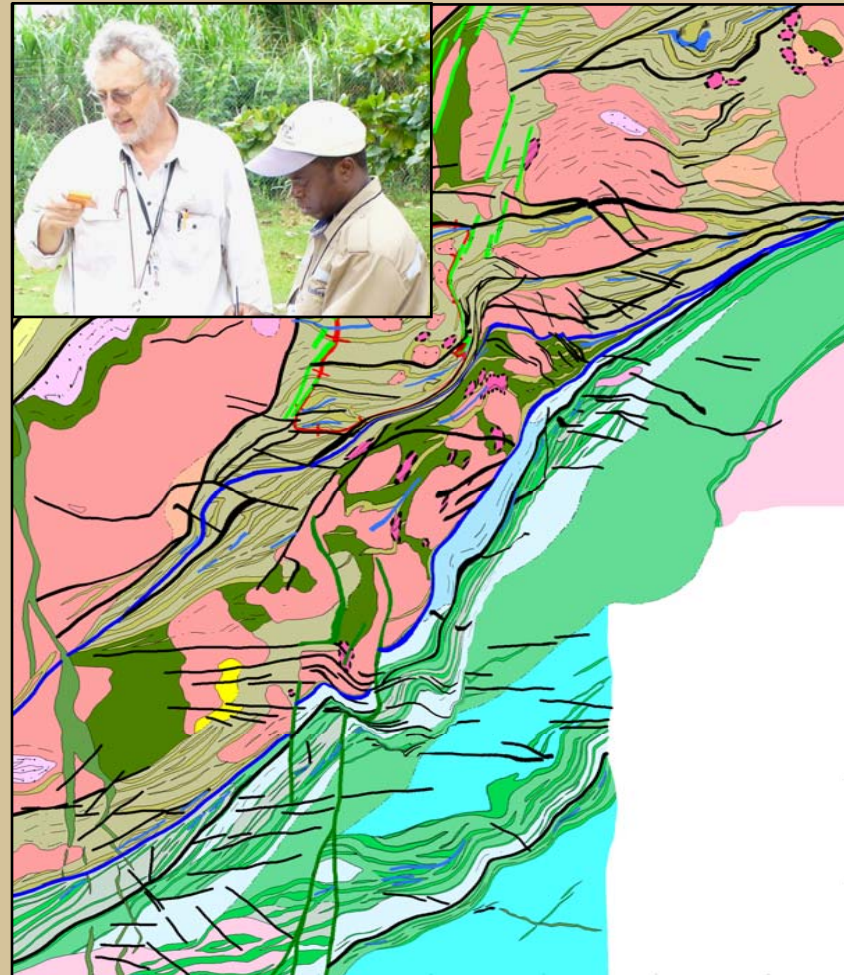
Depth of Investigation: 75m-200m



- Proprietary NEWTEM EM System
- Resistivity/conductivity depth slice mapping
- District reconnaissance tool

Aeromagnetic Interpretation

- Detailed Lithologic and Structural model



Exploration Toolbox

IP And Gravity



Jeremy Cook: Geophysics

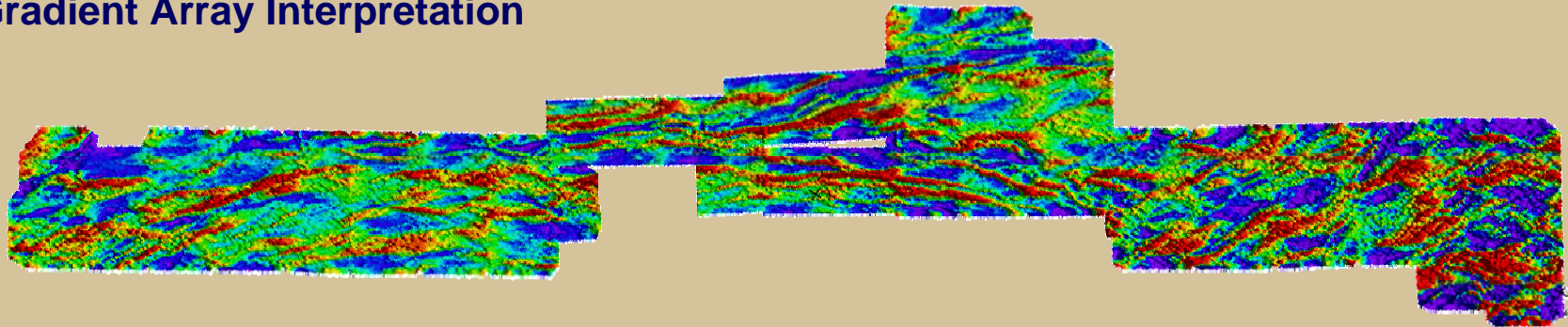


Gravity Survey



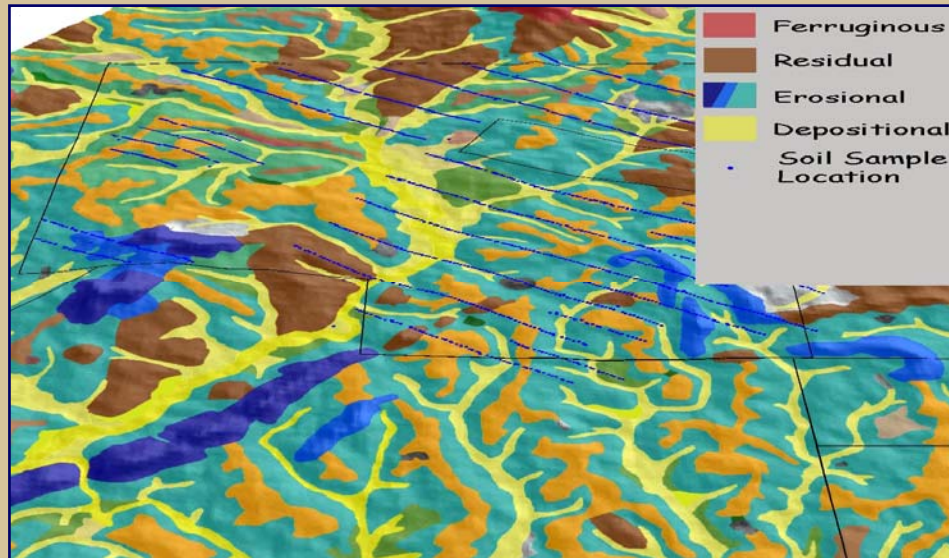
- Growing database
- Integrated with district data portfolio

Gradient Array Interpretation



Exploration Toolbox

Regolith Mapping & Geochemistry

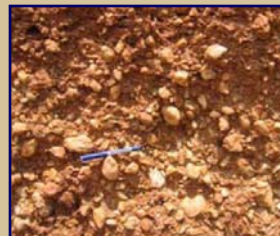


Simon Bolster: Regolith



Nigel Radford: Geochemistry

- Understanding regolith distribution + profile
- Knowing which data to trust
- Improved geochemical interpretation



Seeking Business Partnerships



- Successful partnerships
- Joint ventures
- Private placements
- Creative merchant banking



In Conclusion....



- **Back in Africa, and glad to be here**
- **Built and operating Ahafo**
- **Optimizing Akyem**
- **Pleased with Africa's contribution to global reserve growth**
- **Proprietary tools, specialists, and training for integrated exploration**
- **~7 Moz annual equity reserve depletion – seeking business opportunities to help address this goal**