



# Newmont: Growing Our Business In Latin America

*Latin American Mining Congress 2007*

*Jeffrey R. Huspeni*

*VP Exploration Business Development*

*Miami, Florida*

*May 2 - 4, 2007*

# Cautionary Statement



*This presentation contains "forward-looking statements" within the meaning of Section 27A of the Securities Act of 1933, as amended, and Section 21E of the Securities Exchange Act of 1934, as amended, that are intended to be covered by the safe harbor created by such sections. Such forward-looking statements include, without limitation, (i) estimates of future gold and copper production and sales; (ii) estimates of future costs applicable to sales; (iii) estimates of future capital expenditures, royalty and dividend income, tax rates and expenses; (iv) estimates regarding timing of future development, construction, production or closure activities; (v) statements regarding future exploration results and the replacement of reserves; and (vi) statements regarding cost structure and competitive position. Where the Company expresses or implies an expectation or belief as to future events or results, such expectation or belief is expressed in good faith and believed to have a reasonable basis. However, forward-looking statements are subject to risks, uncertainties and other factors, which could cause actual results to differ materially from future results expressed, projected or implied by such forward-looking statements. Such risks include, but are not limited to, gold and other metals price volatility, currency fluctuations, increased production costs and variances in ore grade or recovery rates from those assumed in mining plans, political and operational risks in the countries in which we operate, and governmental regulation and judicial outcomes. For a more detailed discussion of such risks and other factors, see the Company's 2006 Annual Report on Form 10-K, filed February 26, 2007 which is on file with the Securities and Exchange Commission, as well as the Company's other SEC filings. The Company does not undertake any obligation to release publicly revisions to any "forward-looking statement," to reflect events or circumstances after the date of this news release, or to reflect the occurrence of unanticipated events, except as may be required under applicable securities laws.*

# *Newmont - A World Leading Gold Company*



- Only Major US Gold Company
- Founded in 1921
- Market Capitalization ➔ \$19 Billion<sup>1</sup>
- Only Gold Stock in the S&P 500 and Fortune 500
- Highly Liquid Gold Stock ➔ Approximately \$285 Million/Day<sup>1</sup>
- 29 Million Acres of Land in the World's Best Gold Districts
- Gold Price Leverage ➔ "No Gold Hedge" Philosophy



STANDARD  
&POOR'S

**FORTUNE 500** 2006

1. *Market Capitalization based on 04/04/2007 share price of \$43.45, 451 million shares outstanding and 6.6 million average shares traded daily.*

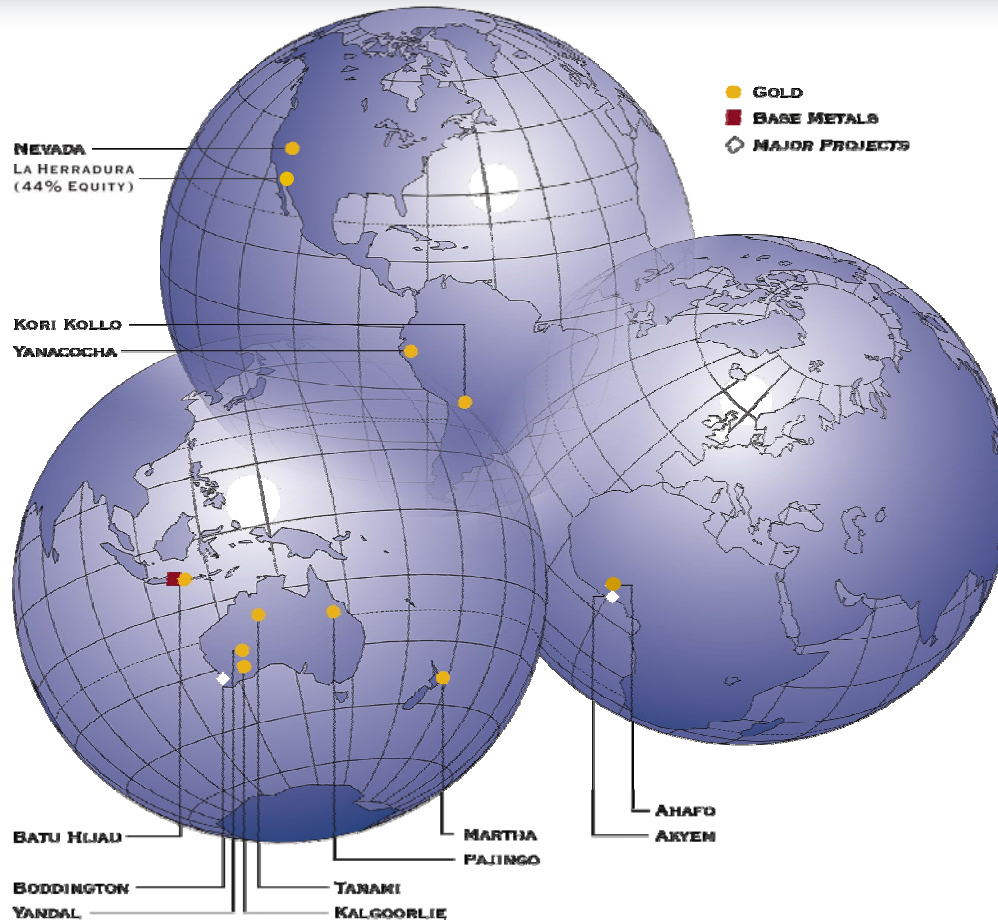
# Newmont's Gold Assets



**Nevada**



**Peru**



**Ghana**



**Indonesia**

- 5.9 Million Equity Gold Ounces Sold in 2006 from 11 Mine-sites Globally
- Over 29 Million Acres of Land in the World's Best Gold Districts

# Peru



YANACOCHA	Guidance 2007	Q4 2006	Q4 2005	YE 2006	YE 2005
Consolidated gold sales (000 ounces)	1,500 – 1,600	439	1,063	2,572	3,328
Equity gold sales (000 ounces)	775 – 825	225	546	1,321	1,709
Consolidated costs applicable to sales (\$/ounce)	\$340 - \$360	\$244	\$145	\$193	\$147

## Opportunities

- Began construction of gold mill during 2006
  - Construction ~38% complete
  - Total capital ~\$250 million
  - Initial production expected in 2008
- Optimizing development plan for Conga
- Yanacocha sulfides provide future upside

## Challenges

- Decreasing ore grades
- Increasing stripping ratios



# La Herradura, Mexico



LA HERRADURA	YE 2006	YE 2005
Consolidated gold sales: 100% equity (000 ounces)	180	182
Equity gold sales: 44% (000 ounces)	79	80
Consolidated costs applicable to sales (\$/ounce)	\$248	\$184

## Opportunities

- Increased production
- District exploration upside



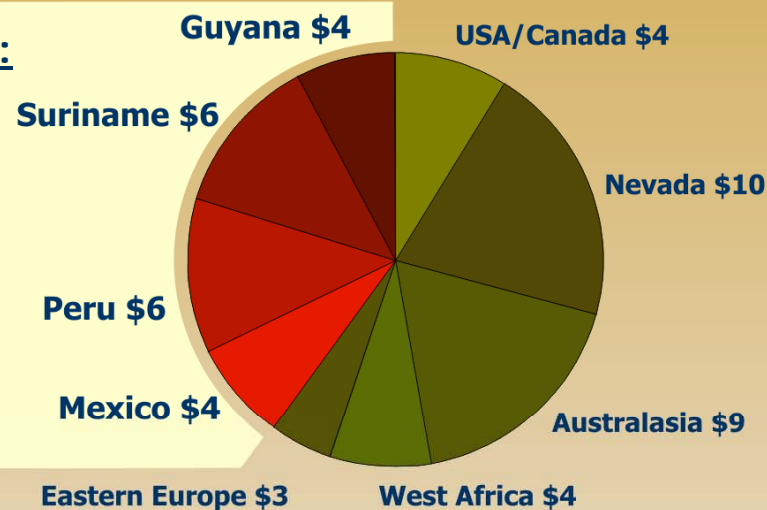
# 2007 Greenfields Exploration Focus



## Greenfields 2007 Budget: (\$ MM)

### Latin America Total:

- \$20 Million
- 40% of the 2007 Greenfields budget

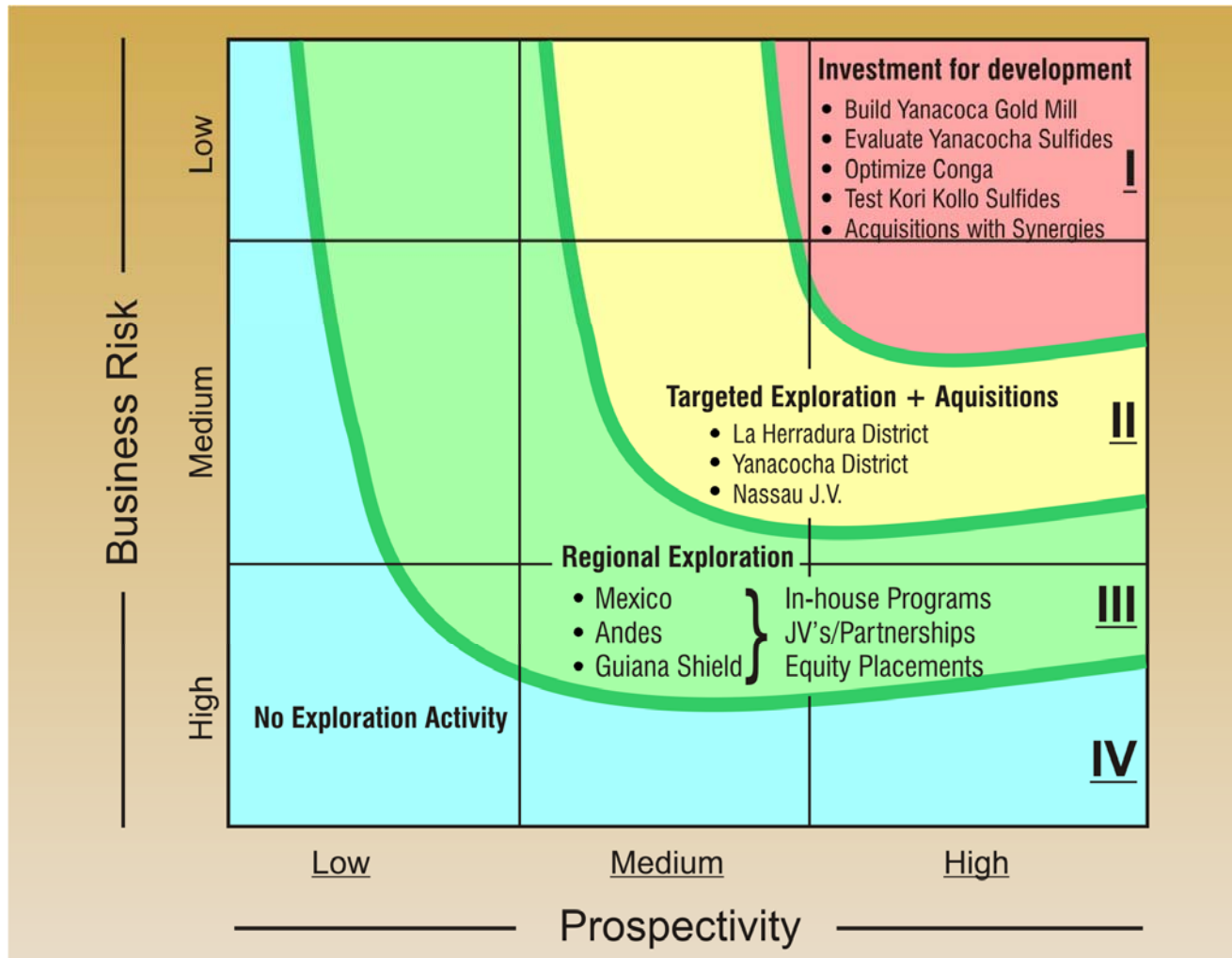


**Total: \$50MM\***



\*\$50.1 million Greenfields total 2007 budget excludes technical specialists and Opportunity Funds

# Latin America Business Development



# *Business Opportunity – “What Drives Newmont ?”*



- Our Business Needs = Equity Reportable:
  - NRM
  - Reserves
  - Production
  - Cash Flow
  
- Business Opportunity – Primary Objective
  - Majority Project Equity & Operating Interest
  
- *And the path can be circuitous, lengthy, not readily obvious at the start, and sometimes partially achieved with acceptable results...*

# *Junior Partner's Business Model?*



- Already a producer?
- Wants to become a producer?
- JV approach to a portfolio of exploration properties?
- Wants to sell asset or company?
  - To highest bidder in auction process?
  - Wants “Strategic” industry senior investor for smooth hand-off?

# *Newmont's Value Proposition*

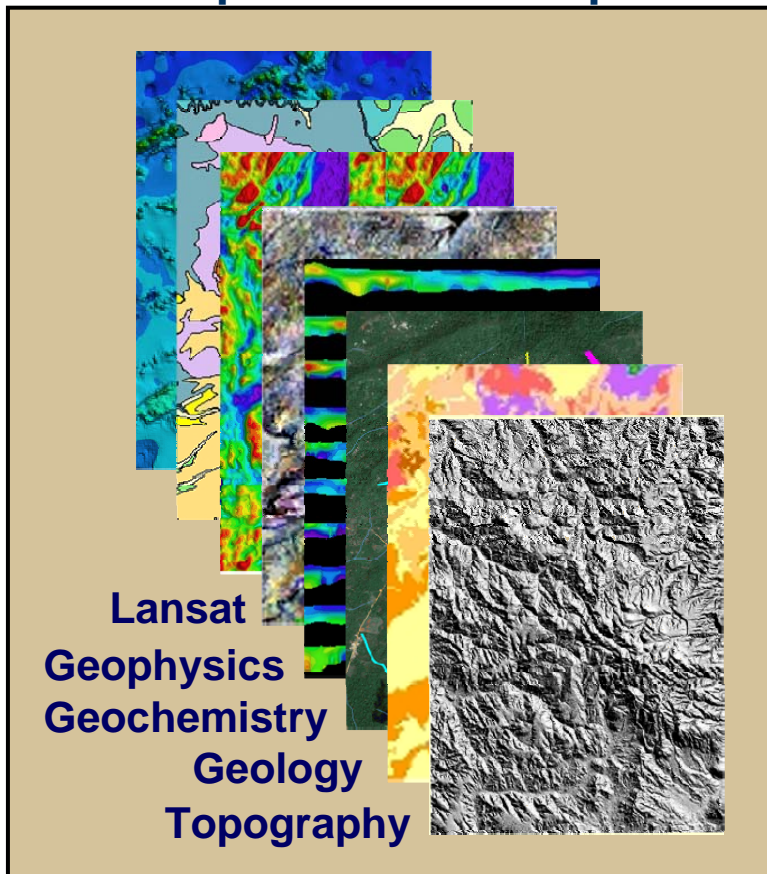


- Proven global business experience
- Endorsement
  - Company
  - Management
  - Project
- Capital investment for robust business opportunities
- Exploration/development culture
  - Track record of success
  - Technical specialists
  - Proprietary technologies
- Flexible, creative business arrangements

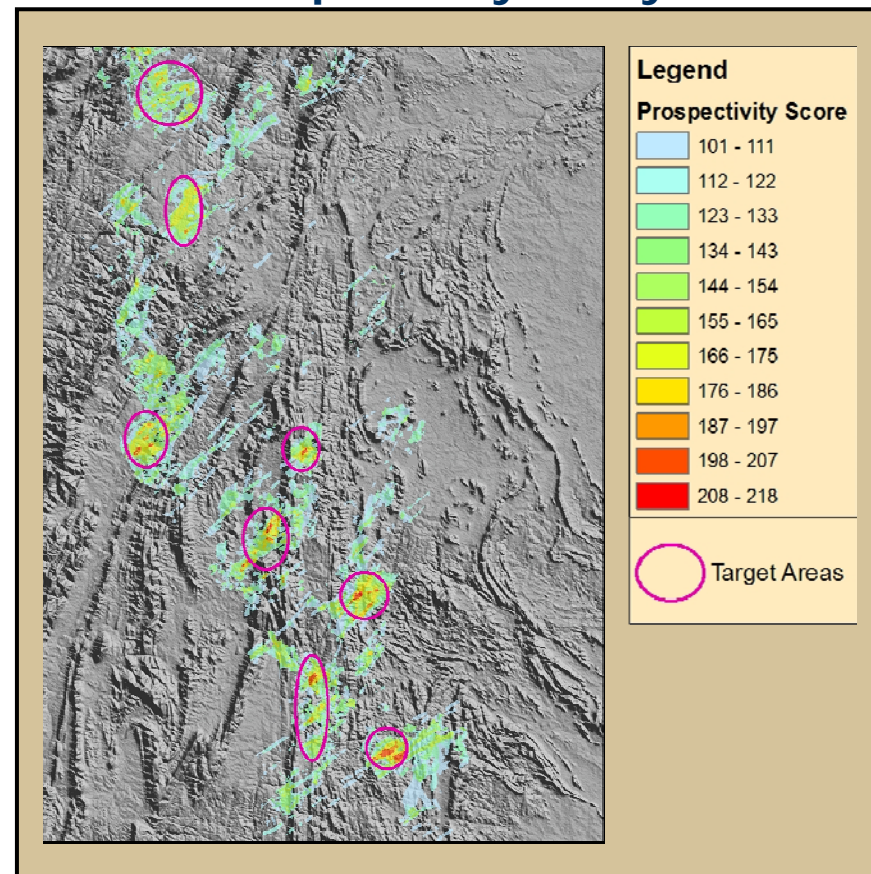
# Regional Framework Studies: Focus On Prospectivity



## Data Compilation & Interpretation



## Prospectivity Analysis

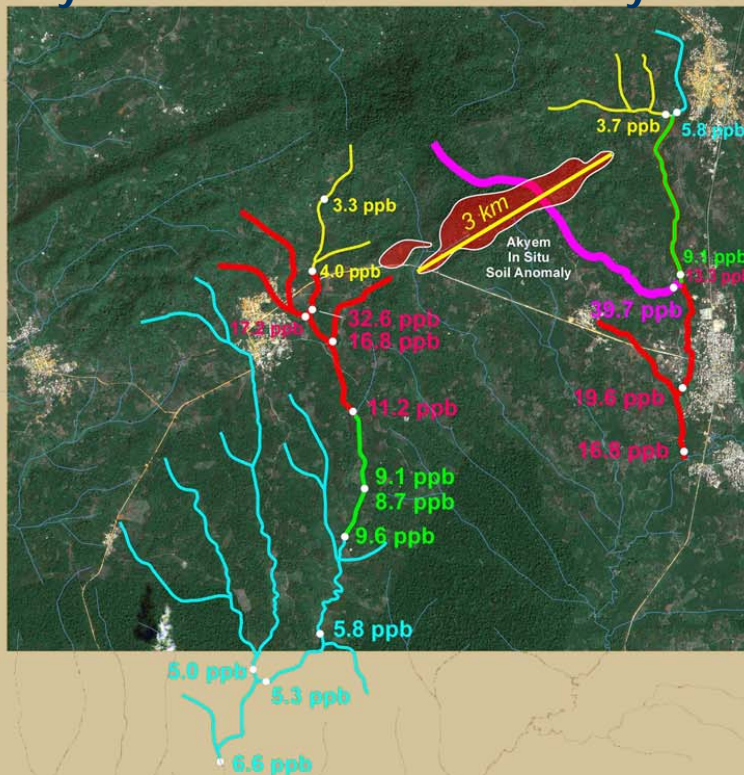


➤ Goal : 85% Of Prospectivity In 10% Of The Terrain

# Exploration Tool Box: Proprietary BLEG Technology



## ➤ Akyem BLEG Orientation Survey



Bill Griffin: BLEG

- Rapid reliable reconnaissance tool
- Ultra-low gold detection and precision
- Notable discoveries: Batu Hijau, Minihasa, Ovacik, Perama Hill, Martabe

# Exploration Tool Box: Airborne EM And Magnetics

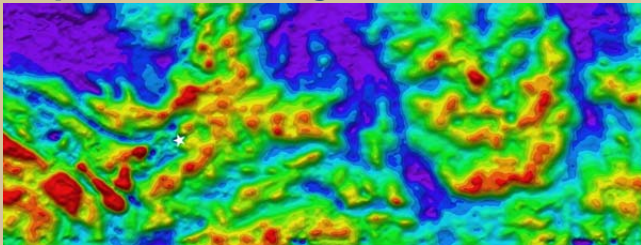


Cees Swager:  
Structural  
Geology

## Resistivity Depth Slice At 50m:

- <6 ohm meters,
- >60 ohm meters

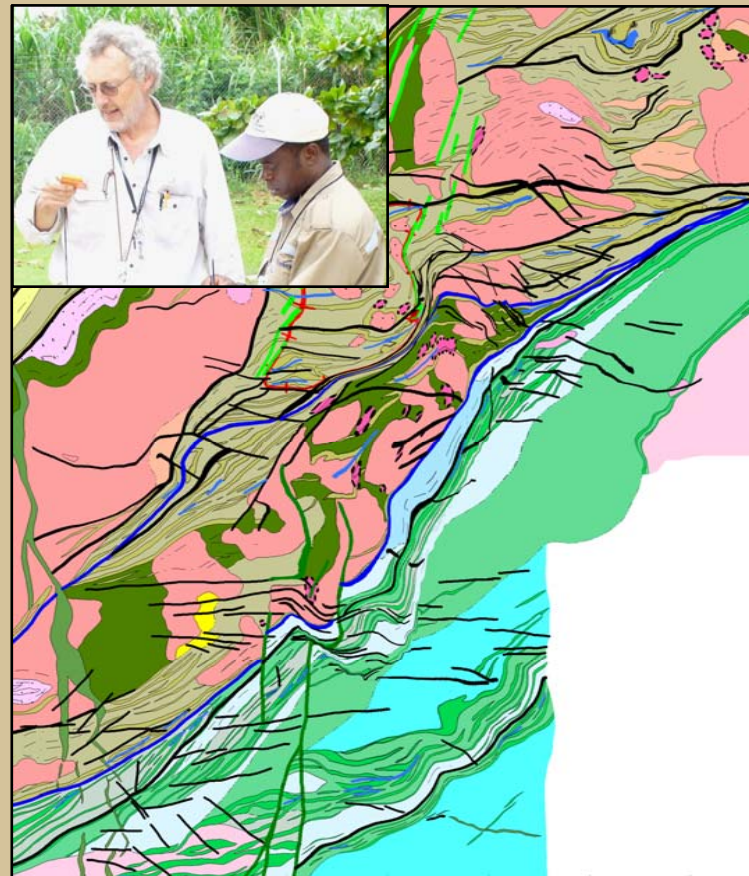
Depth of Investigation: 75m-200m



- Proprietary NEWTEM EM System
- Resistivity/conductivity depth slice
- District reconnaissance tool

## Aeromagnetic Interpretation

- Detailed Lithologic and Structural model



# Exploration Tool Box: IP And Gravity



**Jeremy Cook: Geophysics**

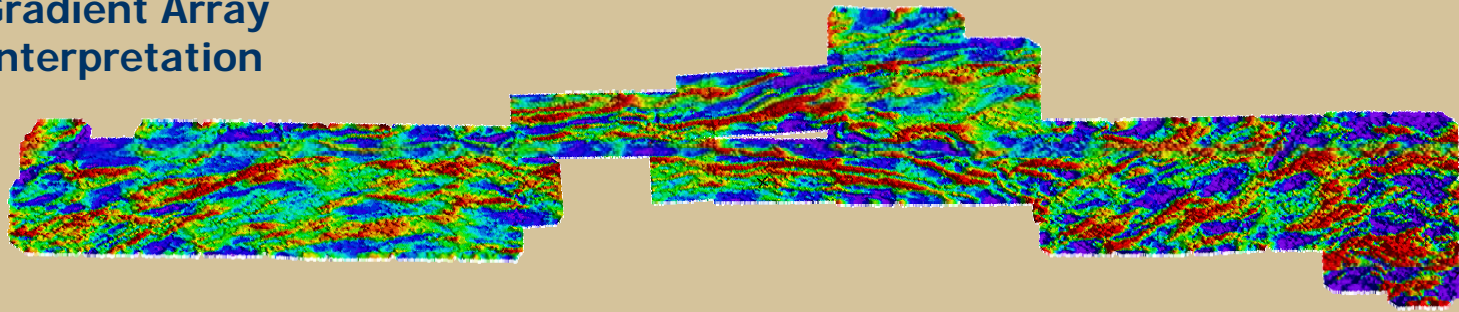


**Gravity Survey**

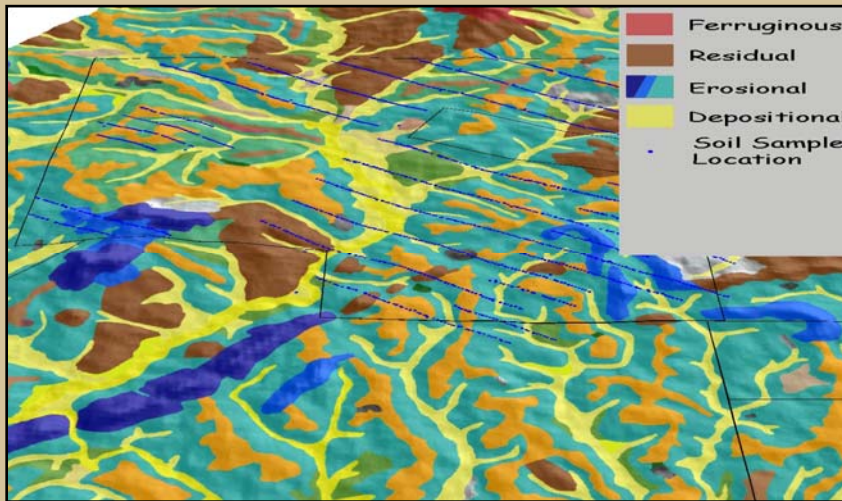


- Growing database
- Integrated with district data portfolio

**Gradient Array  
Interpretation**



# Exploration Tool Box: Regolith Mapping & Geochemistry



Simon Bolster: Regolith



Nigel Radford: Geochemistry



- Understanding regolith distribution + profile
- Knowing which data to trust
- Improved geochemical interpretation



# Seeking Business Partnerships



- Successful partnerships
- Joint ventures
- Private placements
- Creative merchant banking

