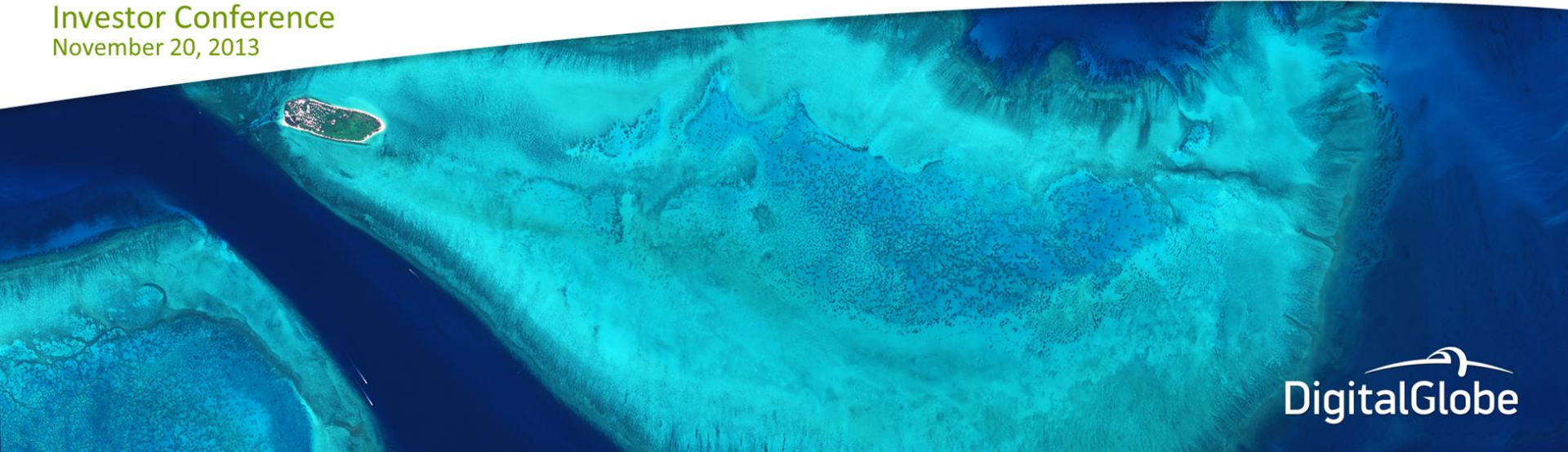


Delivering Sustainable Growth and Shareowner Value Creation

Investor Conference
November 20, 2013



Forward Looking Statement

This document may contain or incorporate forward-looking statements within the meaning of the Private Securities Litigation Reform Act of 1995, as amended. Forward-looking statements relate to future events or future financial performance and generally can be identified by the use of terminology such as “may,” “will,” “should,” “expects,” “plans,” “anticipates,” “could,” “intends,” “target,” “projects,” “contemplates,” “believes,” “estimates,” “predicts,” “potential,” “continue” or “looks forward to” or the negative of these terms or other similar words, although not all forward-looking statements contain these words.

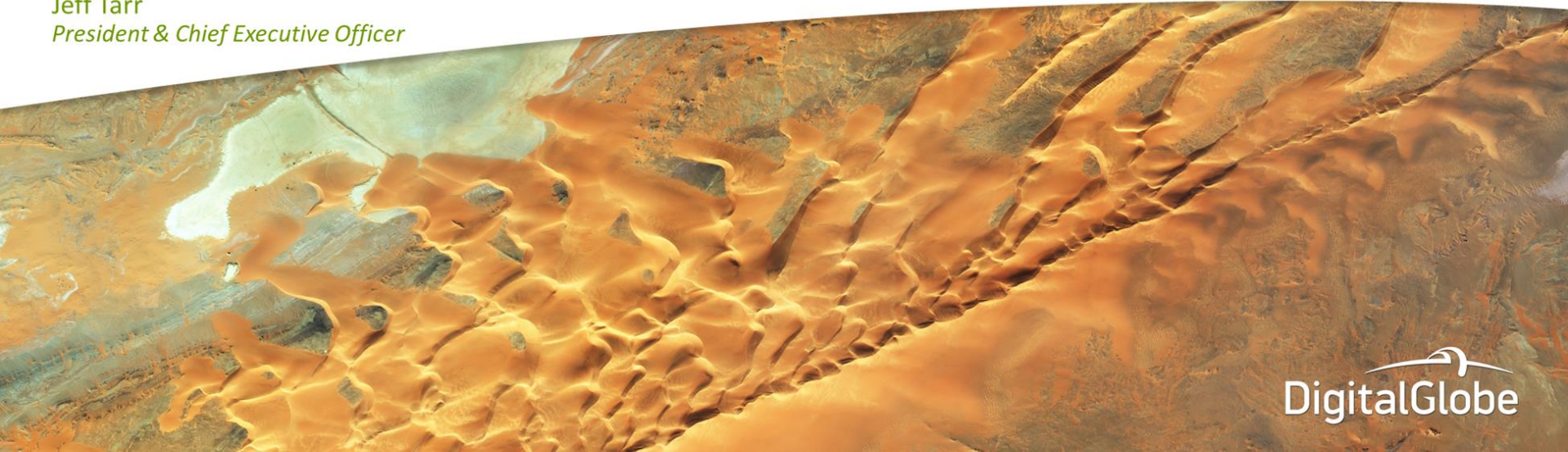
Any forward-looking statements are based upon our historical performance and on our current plans, estimates and expectations. The inclusion of this forward-looking information should not be regarded as a representation by us that the future plans, estimates or expectations will be achieved. Such forward-looking statements are subject to various risks and uncertainties and assumptions. A number of important factors could cause our actual results or performance to differ materially from those indicated by such forward looking statements, including: the loss, reduction or change in terms of any of our primary contracts; the availability of government funding for our products and services both domestically and internationally; changes in government and customer priorities and requirements (including cost-cutting initiatives, the potential deferral of awards, terminations or reduction of expenditures to respond to the priorities of congress and the administration, or budgetary cuts resulting from congressional committee recommendations or automatic sequestration under the Budget Control Act of 2011); the risk that the anticipated benefits and synergies from the strategic combination of the Company and GeoEye, Inc. cannot be fully realized or may take longer to realize than expected; adjustments to the fair value of certain of the Company’s assets and liabilities, including estimates made in connection with the strategic combination of the Company and GeoEye, Inc.; the outcome of pending or threatened litigation; the loss or impairment of our satellites; delays in the construction and launch of any of our satellites; delays in implementation of planned ground system and infrastructure enhancements; loss or damage to the content contained in our imagery archives; interruption or failure of our ground system and other infrastructure, decrease in demand for our imagery products and services; increased competition that may reduce our market share or cause us to lower our prices; our failure to obtain or maintain required regulatory approvals and licenses; changes in U.S. foreign law or regulation that may limit our ability to distribute our imagery products and services; the costs associated with being a public company and other important factors, all as described more fully in our filings with the Securities and Exchange Commission, including our Annual Report on Form 10-K.

We undertake no obligation to update any forward-looking statement to reflect events or circumstances after the date on which the statement is made or to reflect the occurrence of unanticipated events. Readers are cautioned not to place undue reliance on any of these forward-looking statements.

Delivering Sustainable Growth and Shareowner Value Creation

Jeff Tarr

President & Chief Executive Officer




DigitalGlobe

Our Agenda for the Day

Strategy for Profitable Growth

Jeff Tarr

Scaling for Growth

Tim Hascall

Innovating for Growth

**Walter Scott
Tony Frazier**

Break

Delivering Customer Growth

Bert Turner

Measuring Our Progress

Yancey Spruill

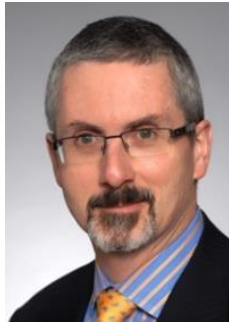
Q&A & Wrap-Up

2013 Is a Year of Great Accomplishments

- Closed GeoEye combination
- Removed \$110M of annualized costs
- Accelerated pro forma growth to 9%
- Expanded adjusted EBITDA margin 930 bps
- Grew 12-month backlog 41%

Note: Metrics are 3Q year-over-year; adjusted EBITDA margin and backlog are non-GAAP metrics

We Have the Leadership for a \$1B+ Business



Walter Scott
EVP, CTO & Founder



Yancey Spruill
EVP, CFO



Timothy Hascall
*EVP, Operations &
Customer Experience*



Bert Turner
SVP, Sales



Grover Wray
SVP, CHRO



Tony Frazier
*SVP, Marketing
& Insight*



Amy Shapero
*SVP, Strategy &
Corporate Development*



Dan Jablonsky
*SVP & General
Counsel*



Marcy Steinke
*SVP, Government
Relations*

Our Purpose, Vision and Values Unite Us



Our Purpose, Vision and Values Unite Us

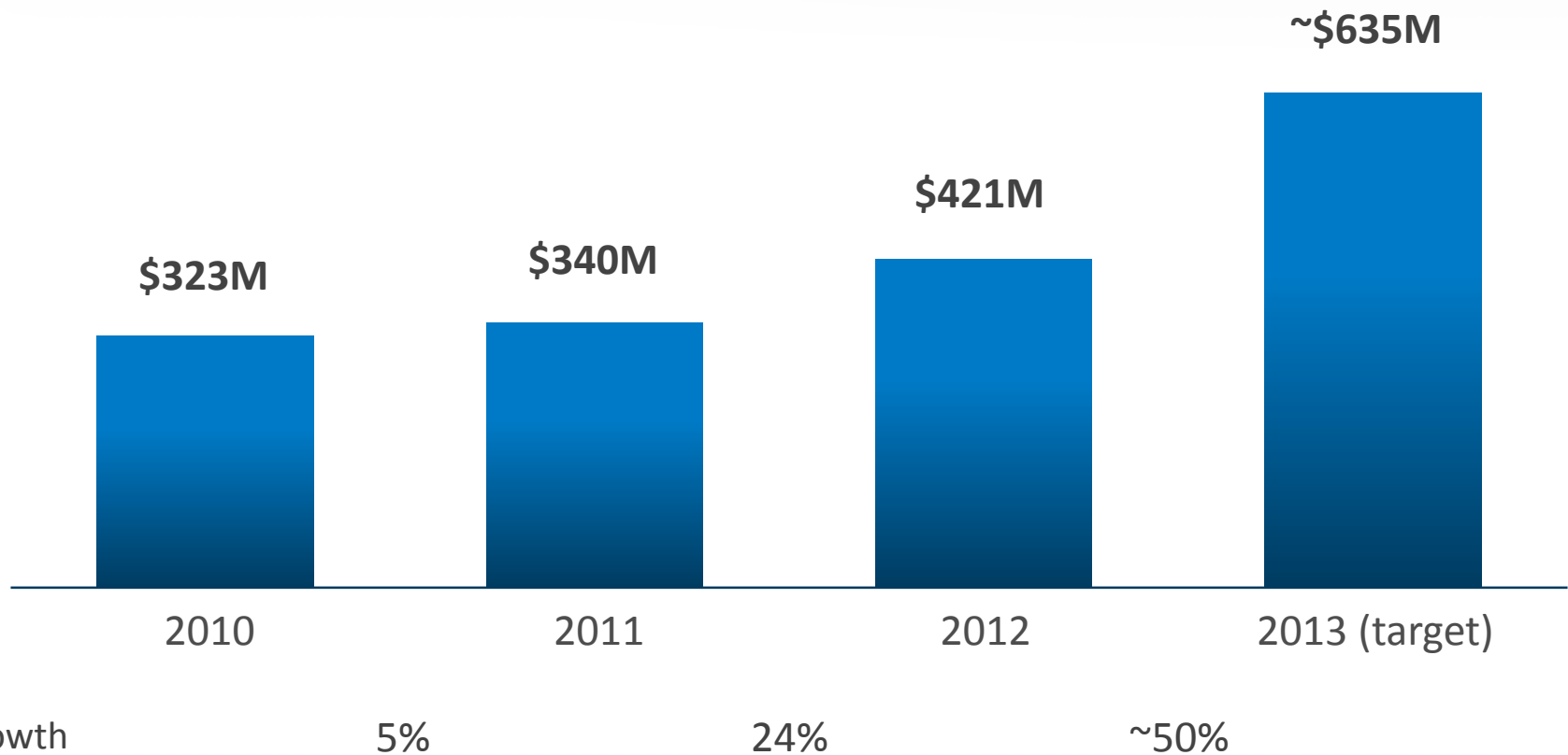


Our Purpose, Vision and Values Unite Us



We Have a Track Record of Strong Growth

Annual Revenue

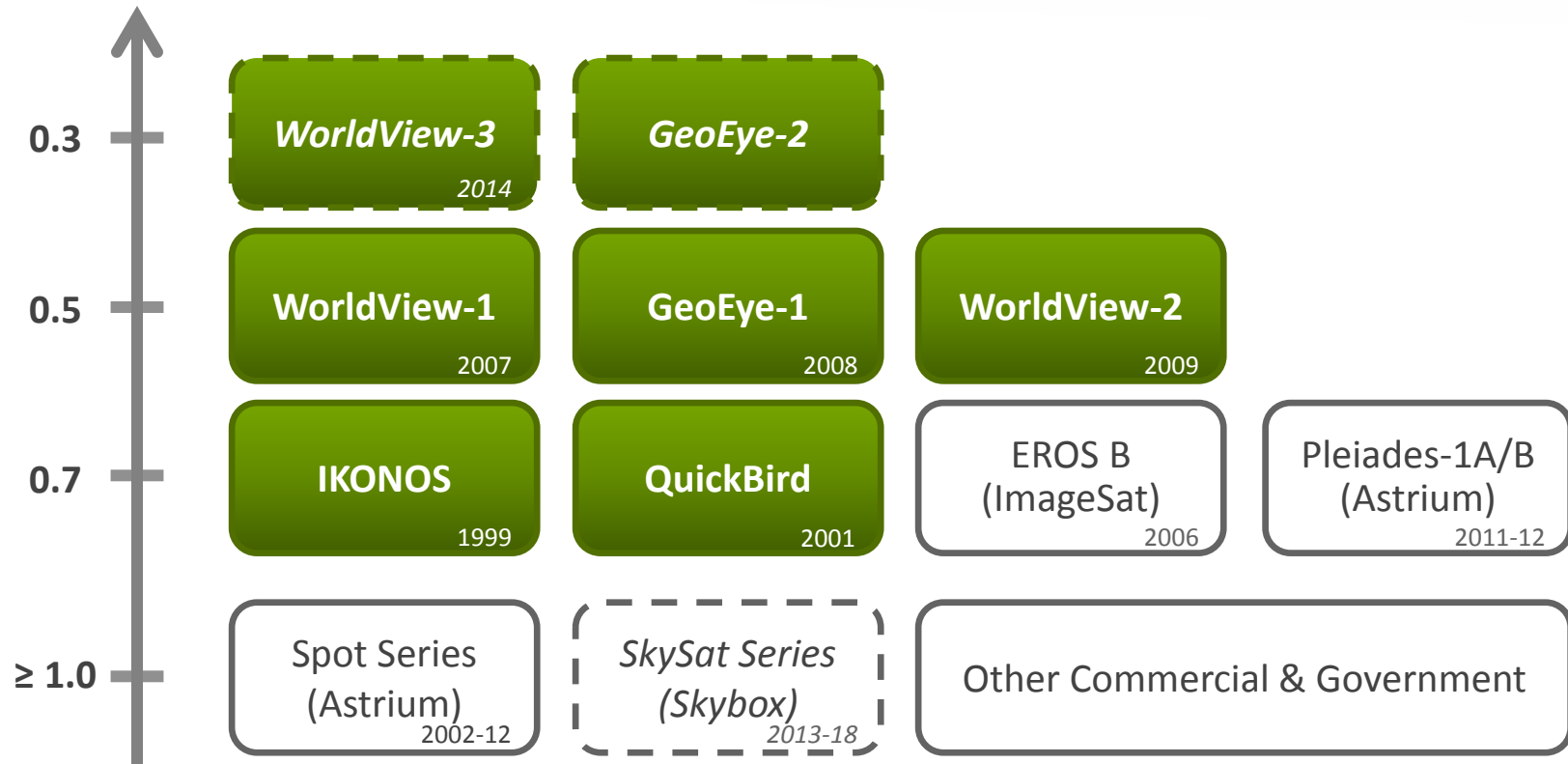


Note: 2013 target revenue in this presentation is per 3Q earnings release

We Are the Resolution Leader

Resolution
(meters)

Planned



We Also Lead in Capabilities Beyond Resolution

vs. Closest Satellite Competitor

Revisit

>3x more often

Accuracy

~2x better

Coverage and Capacity

~4x more area per day

Spectral Diversity

~2x greater

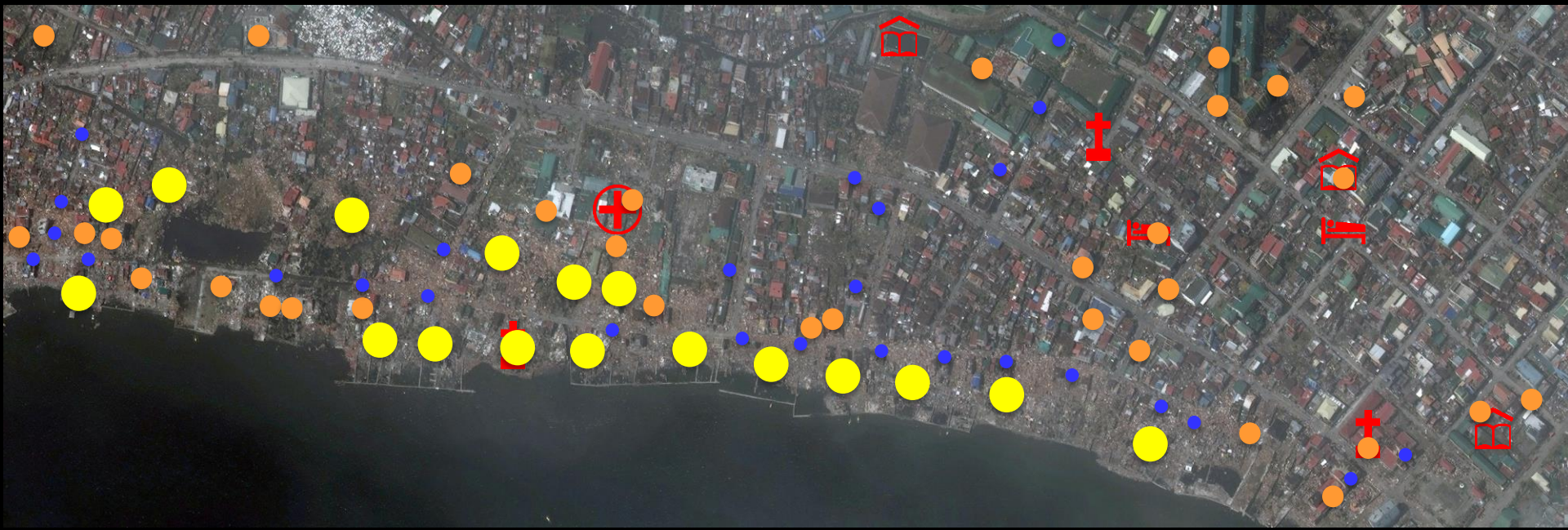
Archive

~18x larger

Note: Based on commercial satellites with sub-meter capabilities



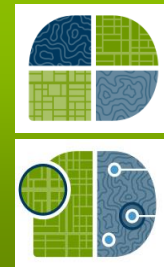




Our Strategy Will Drive Profitable Growth



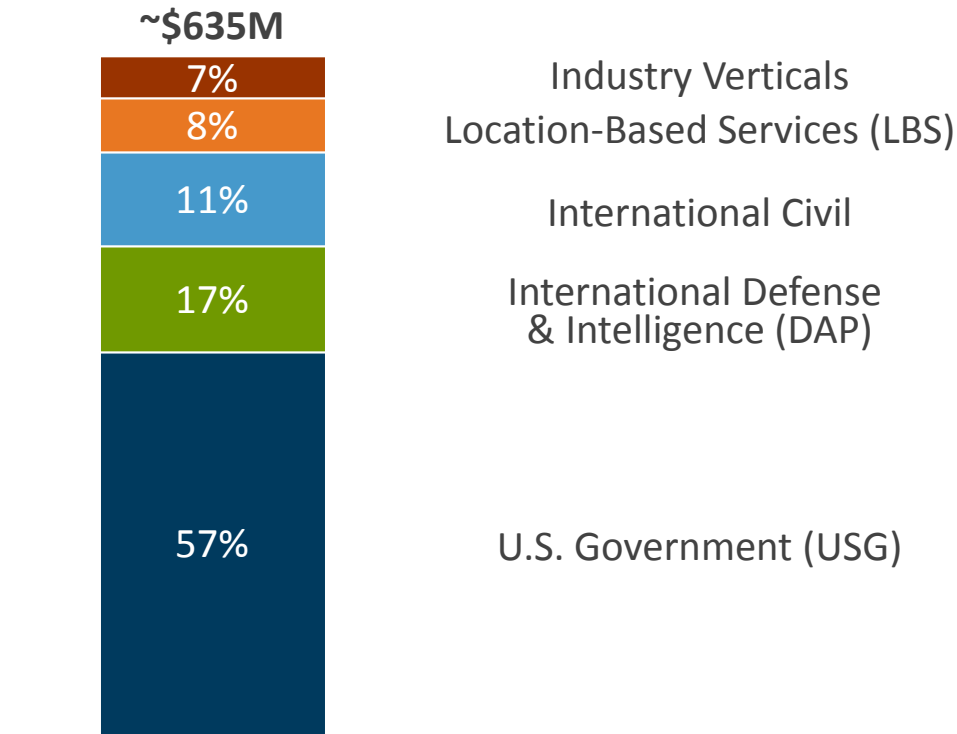
Grow Our Core
Satellite Imagery
Business



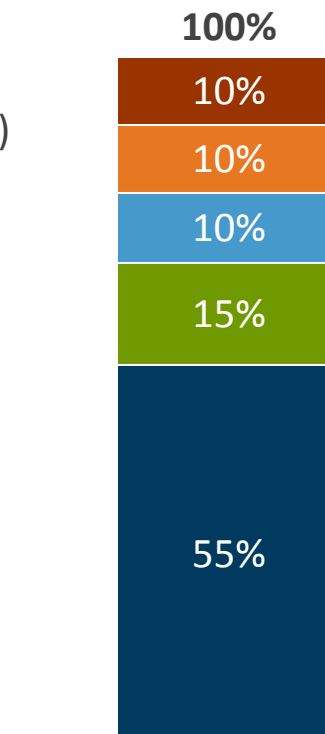
Grow Emerging
Information and Insight
Businesses

Revenue and Sources of Growth Are Diversified

Percent of 2013 Revenue



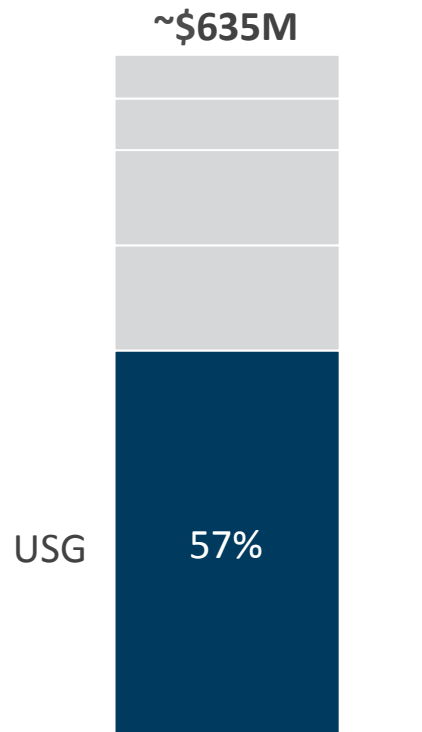
Contribution to 2014 Growth



Note: 2013 target revenue in this presentation is per 3Q earnings release; 2014 estimated contribution to growth

We Are Integral to the **U.S. Government**

Percent of 2013 Revenue



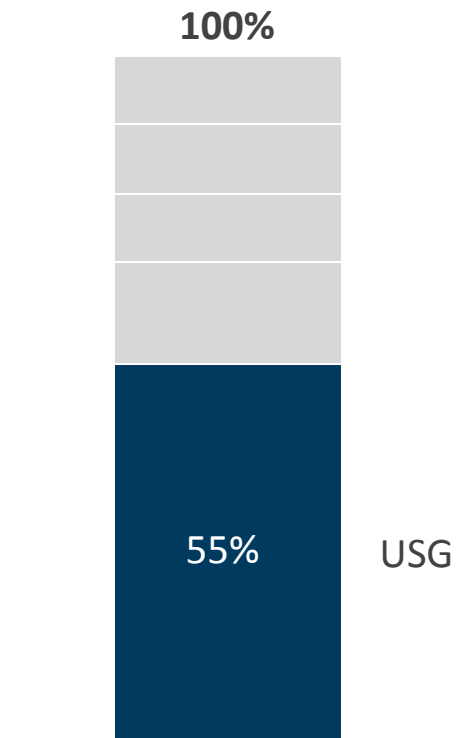
- Primary source of shareable imagery
- Saving substantial taxpayer dollars
- Deeply embedded
- Recurring revenue with more than a decade of growth

We Are Integral to the U.S. Government

2014 Growth Drivers

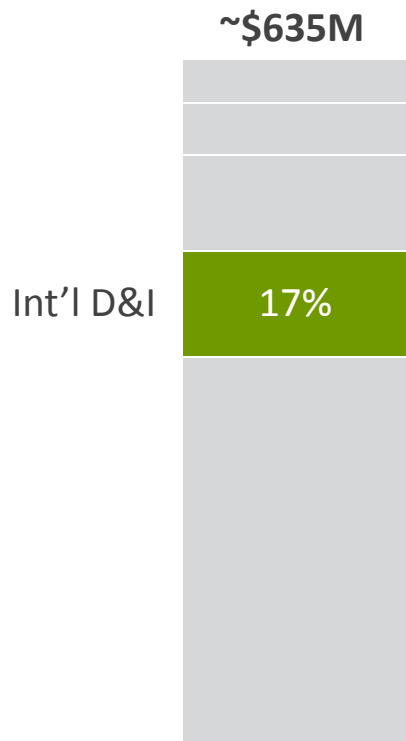
- Capture revenue and cash step-up with WorldView-3
- Sustain and grow new run rate for value added
- Add value and grow usage of Global EGD
- Grow Analytics

Contribution to 2014 Growth



We Are Critical to International Defense & Intelligence (DAP)

Percent of 2013 Revenue



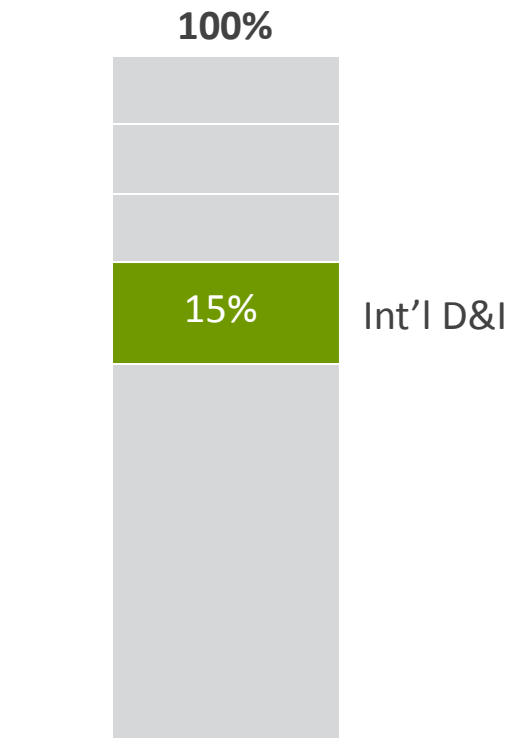
- Primary source of imagery over denied airspace
- Superior customer economics
- Deeply embedded
- Long-term relationships with high renewal rates

We Are Critical to International Defense & Intelligence (DAP)

2014 Growth Drivers

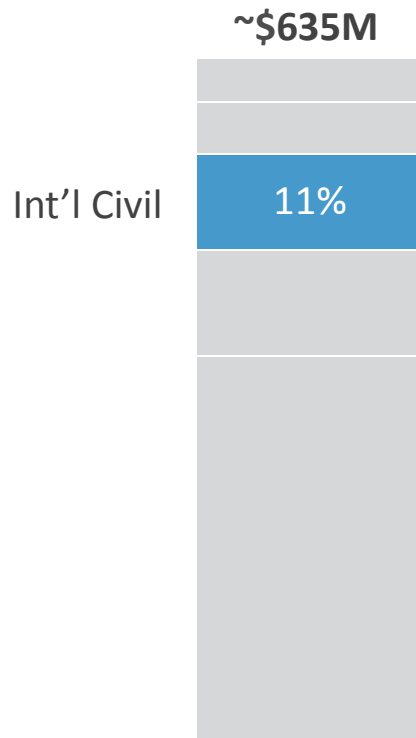
- Optimize pricing and capacity
- Sell more minutes
- Activate new DAP
- Close new opportunities in pipeline

Contribution to 2014 Growth



We Are Fueling Economic Development in International Civil

Percent of 2013 Revenue



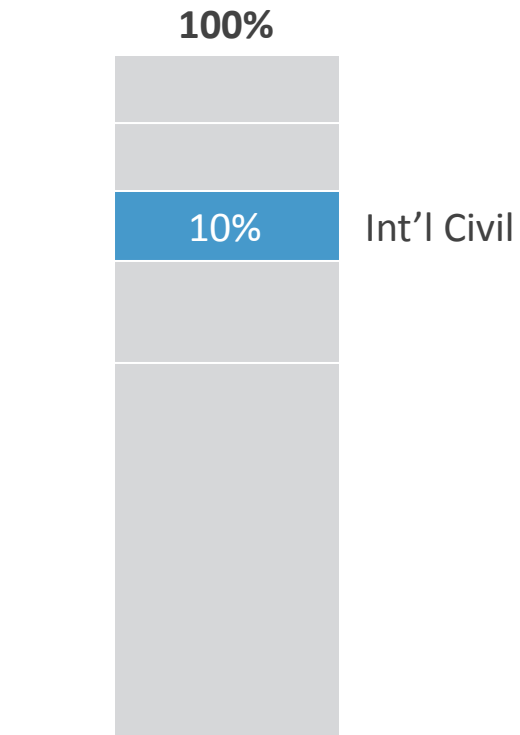
- Best way to map and monitor large, rapidly changing land masses
- Long-term relationships in emerging markets
- Primarily project-based revenue with periodic updates

We Are Fueling Economic Development in International Civil

2014 Growth Drivers

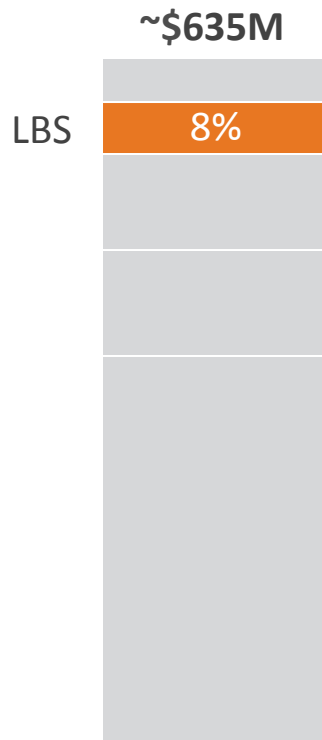
- Optimize pricing and capacity
- Launch of WorldView-3
- Continue to grow existing accounts and win new ones

Contribution to 2014 Growth



We Are Foundational to **Location-Based Services**

Percent of 2013 Revenue



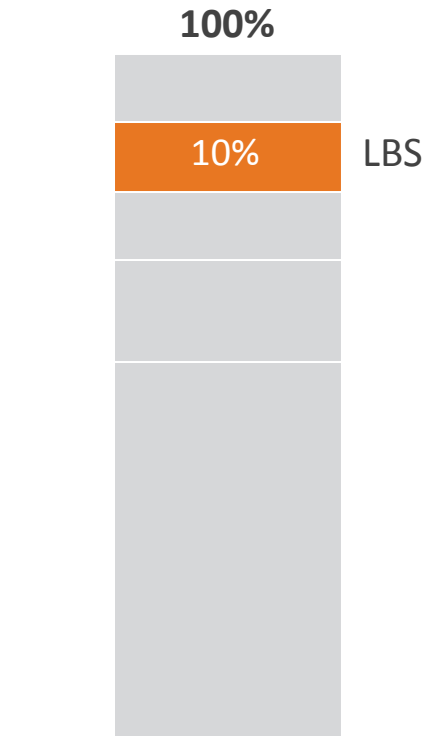
- Critical to growing array of web-based applications
- Benefiting from intense competition for end users
- Primarily long-term contracts with regular deliveries

We Are Foundational to **Location-Based Services**

2014 Growth Drivers

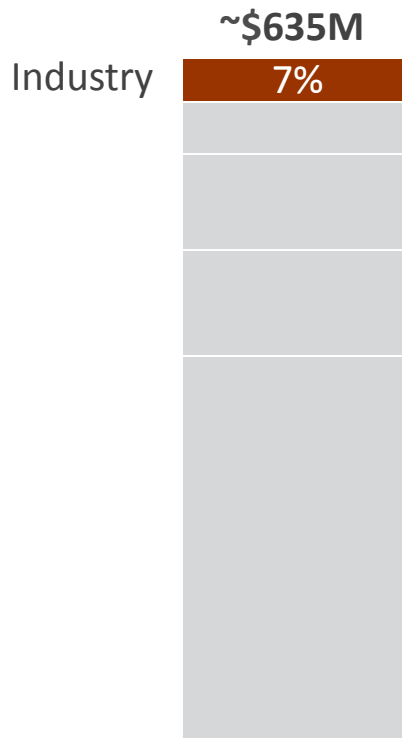
- Configure quality attributes to customer requirements
- Price to value
- Capture emerging LBS players globally

Contribution to 2014 Growth



We Are Innovating with Many **Industry Verticals**

Percent of 2013 Revenue



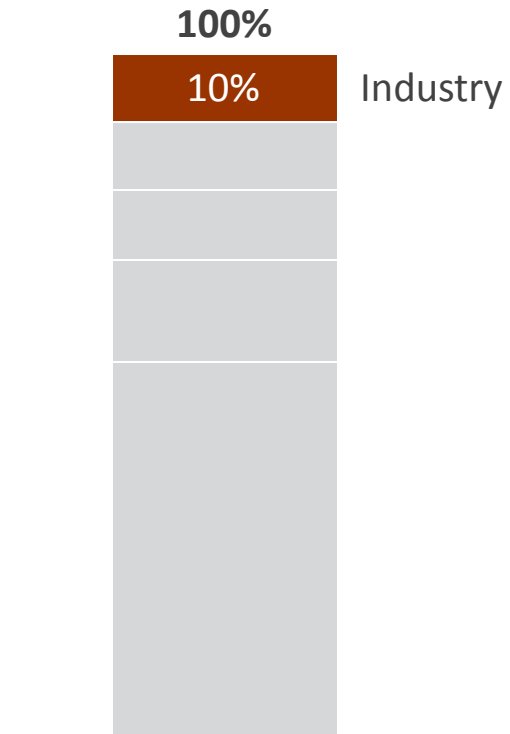
- Footholds in wide array of large end markets
- Serving Oil & Gas, Mining, Utilities, Agriculture, Financial Services, NGOs
- Moving beyond imagery into information and insight

We Are Innovating with Many Industry Verticals

2014 Growth Drivers

- Optimize pricing
- Increase sales productivity and coverage
- Capture additional value through partnerships
- Develop new information and insight offerings

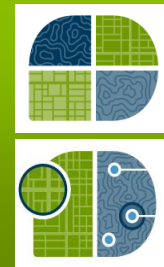
Contribution to 2014 Growth



Our Strategy Will Drive Profitable Growth



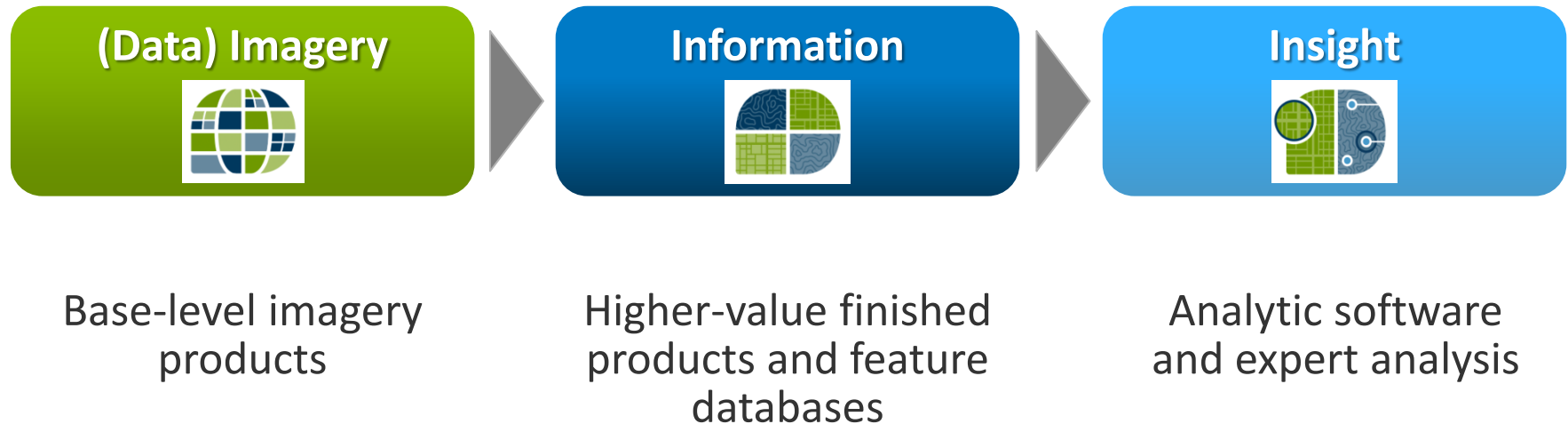
Grow Our Core
Satellite Imagery
Business



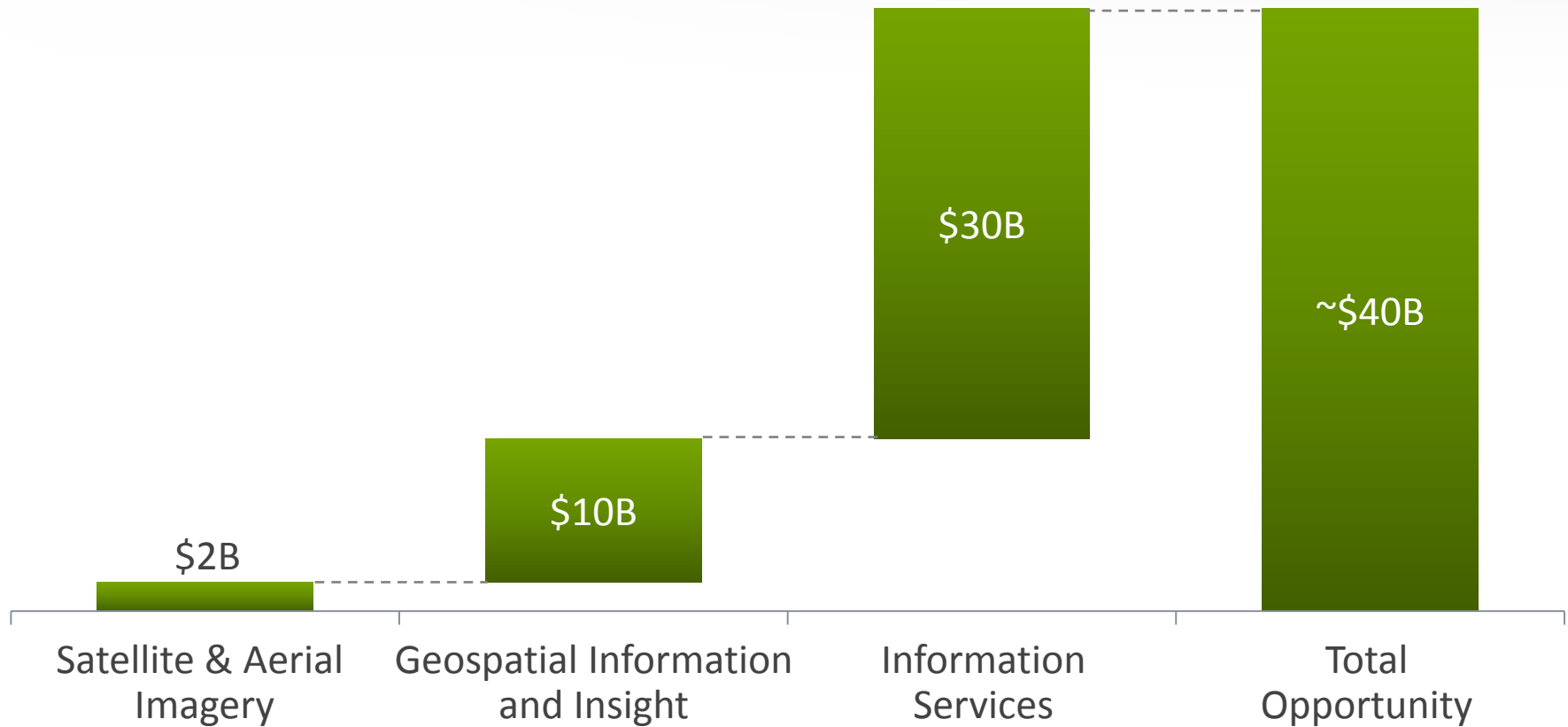
Grow Emerging
Information and Insight
Businesses

We Are Evolving Beyond Imagery for Long-Term Growth

Customer Workflow

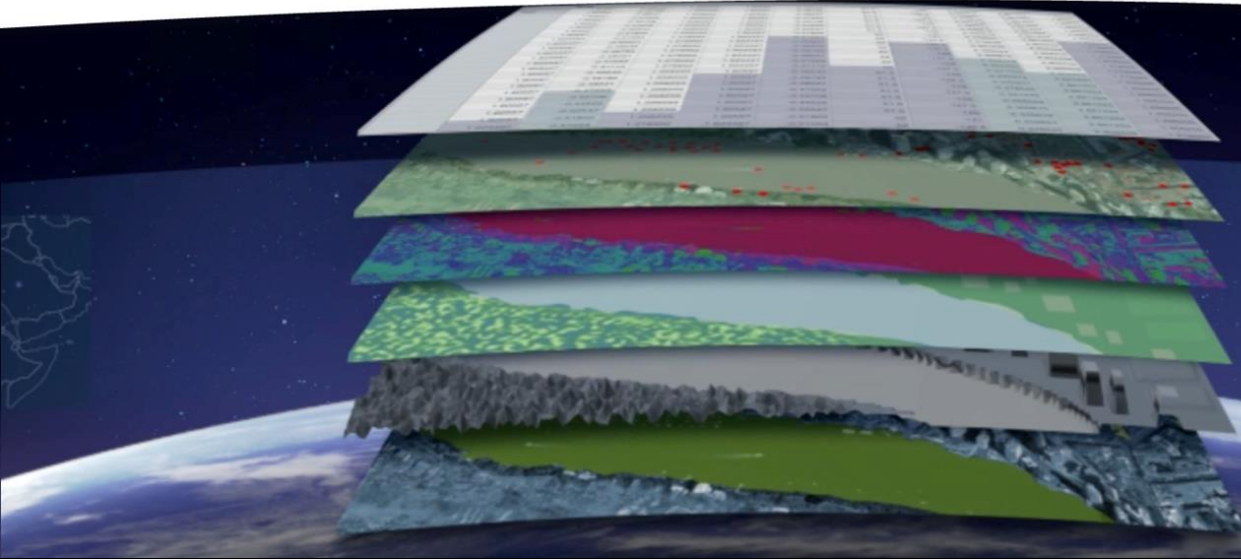


This Evolution Accesses a ~\$40B Opportunity



Sources: Outsell, Euroconsult, DigitalGlobe estimates (2013)

We Are Developing Emerging Capabilities Today



- Mapping coastline for an environmental NGO
- Mitigating copper theft for a U.S. utility
- Enhancing demographic information for a global marketing company
- Extracting features for a government agency

An aerial photograph of a large industrial facility, identified as a Hyundai plant. The image is overlaid with a semi-transparent dark grey rectangle containing white text. The text provides statistics for 'Manufactured Cars' and 'Employee Cars' for 'WEEK 1'. The background shows various industrial buildings, parking lots, and roads. A prominent white building in the center-right features the Hyundai logo and the word 'HYUNDAI' in black capital letters. The overall scene is captured from a high-angle perspective, showing the layout of the plant and its surrounding infrastructure.

Manufactured Cars: 11787 Employee Cars: 1497

WEEK 1

An aerial photograph of a large industrial facility, likely a car manufacturing plant. The image is overlaid with a semi-transparent dark grey rectangle containing white and green text. The text reports production statistics for 'WEEK 4'. A prominent white building in the center-right of the image features the Hyundai logo and the word 'HYUNDAI' in black capital letters. The surrounding area includes parking lots, roads, and other industrial structures.

Manufactured Cars: 5579 Employee Cars: 1762

WEEK 4

An aerial photograph of a large industrial facility, identified as a Hyundai plant. The image is overlaid with a semi-transparent dark grey box containing text. Numerous small red rectangles are scattered across the left side of the image, primarily in the parking lot area, indicating the locations of individual cars. A large white building in the center-right features the Hyundai logo and the word "HYUNDAI" in black capital letters. The overall scene shows a complex of buildings, parking lots, and surrounding infrastructure.

Manufactured Cars: 8061 Employee Cars: 2749

WEEK 9

Feature Extraction Unlocks New Opportunities

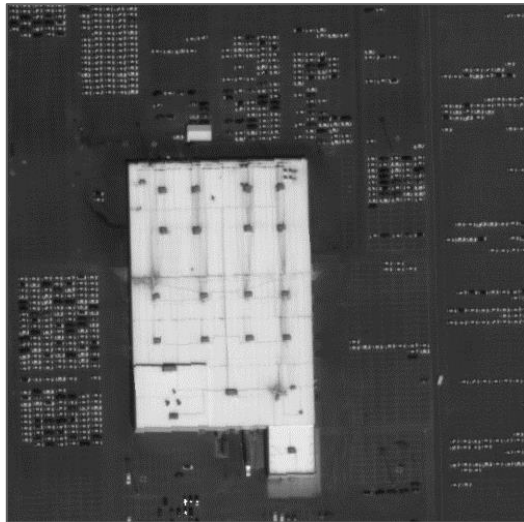
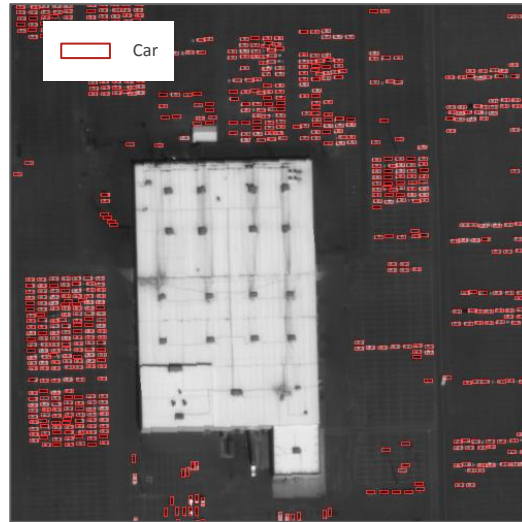


Image of parking lot



Global database of cars
in "all" parking lots

Info Services offerings

- Retail traffic volume
- Competitor intelligence
- Factory output

Customer segments

- Financial Services
- Retail
- Manufacturing

Feature Extraction Unlocks New Opportunities

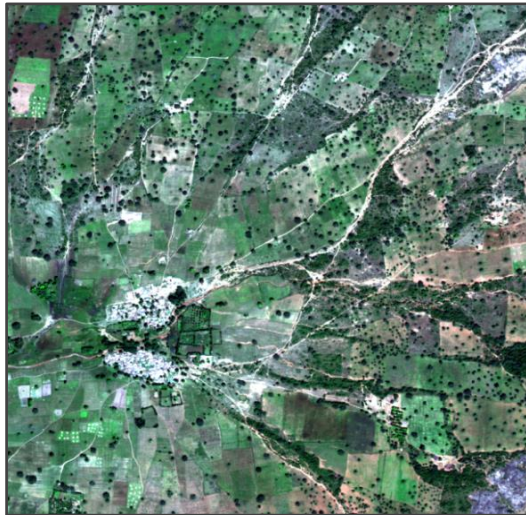
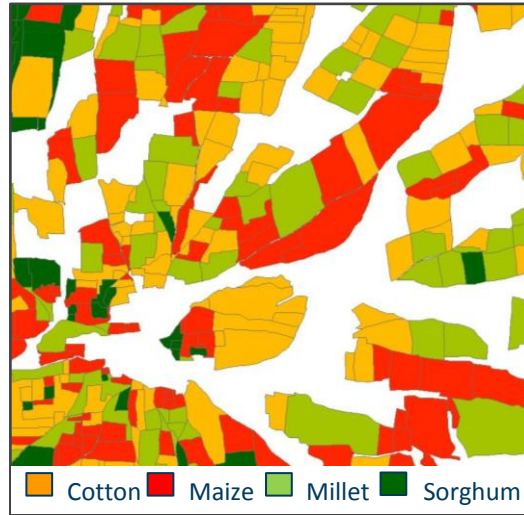


Image of crops



Global database of “all” crop boundaries and types



Info Services offerings

- Crop type identification
- Crop health assessment
- Crop yield forecasting

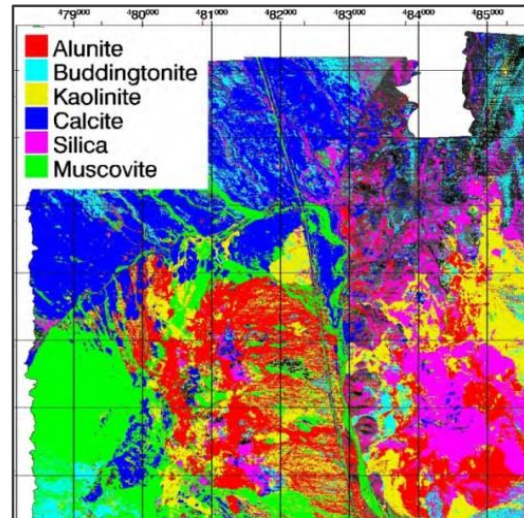
Customer segments

- Agriculture
- Financial Services
- Governments

Feature Extraction Unlocks New Opportunities



Image of potential mining exploration area



Global database of mineral types across "all" exploration areas^(a)

Info Services offerings

- Exploration maps
- Country intelligence
- Environmental impact

Customer segments

- Mining
- Governments
- Financial Services

(a) Based on expected capabilities of WorldView-3

Our Strategy Will Drive Profitable Growth



Our Vision:

***By 2020, be the
indispensable source
of information about
our changing planet.***

We Have a Clear Path to Profitable Growth...

- Talent and culture for continued success
- Industry lead in technology
- Strong position in growing customer segments
- Evolving to penetrate larger information opportunity

...And Sustained Shareowner Value Creation

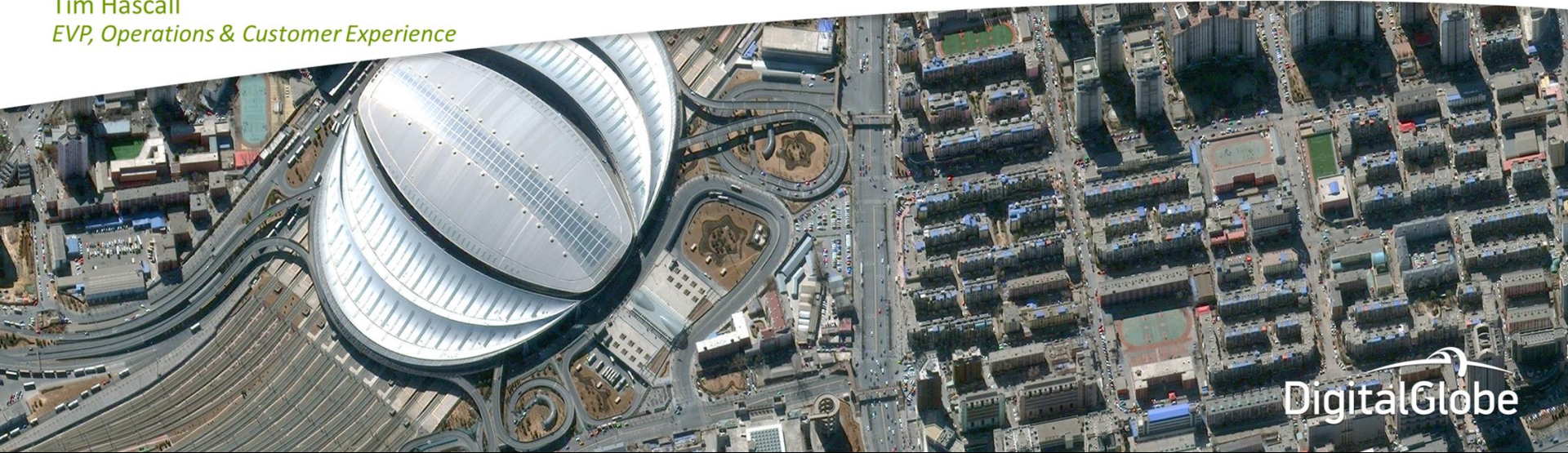
- Long-term revenue growth of 10% or better
- Expanding EBITDA margin
- New era of free cash flow generation
- Committed to delivering strong returns

Note: EBITDA margin and free cash flow are non-GAAP metrics

Scaling for Growth

Tim Hascall

EVP, Operations & Customer Experience



DigitalGlobe

We Have Made Significant Combination Progress

- Removed \$83M of annual run-rate operating expense
- Consolidated multiple locations
- Operating all five satellites from single Mission Control
- Consolidated ground terminals from 19 to 12

Remaining Activities Focus Primarily on Growth

- Consolidating ordering systems and archives
- Integrating constellation planning
- Scaling production capabilities
- Realizing remaining cost synergies

We Are Setting the Industry Standard for Quality

Committed to Quality



**By living our Purpose, Vision
and Values, we have a culture that
promotes continuous quality improvement**

We are Intensely Focused on the Quality of Our Solutions and the Customer Experience

CUSTOMER

SOLUTIONS:

The quality
of what we
deliver

« Accuracy »

« Currency »

« Completeness »

« Consistency »

CUSTOMER

EXPERIENCE:

The quality
of our
interactions

Our Accuracy Is Best-in-Class

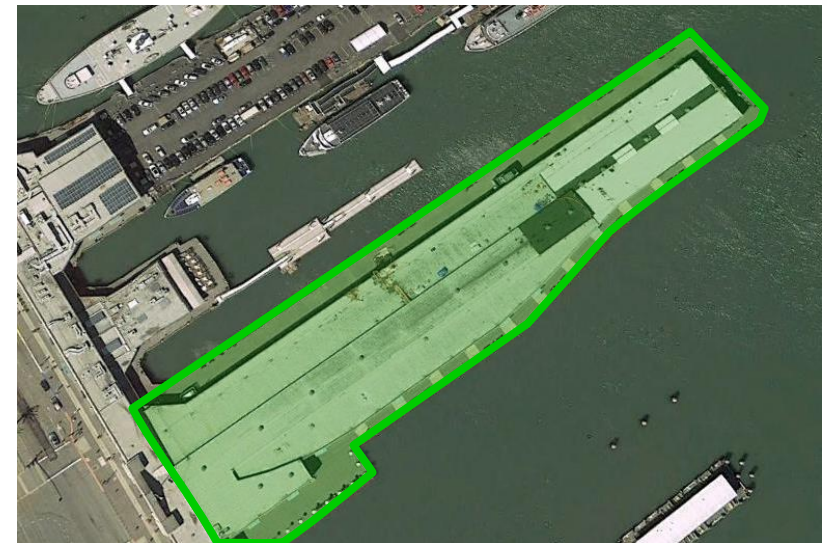
Closest Satellite Competitor



Customer Impact:

Potentially devastating errors

DigitalGlobe Accuracy



Customer Impact:

Accurate and precise actions

Our Currency Is Industry-Leading

Global EGD Coverage

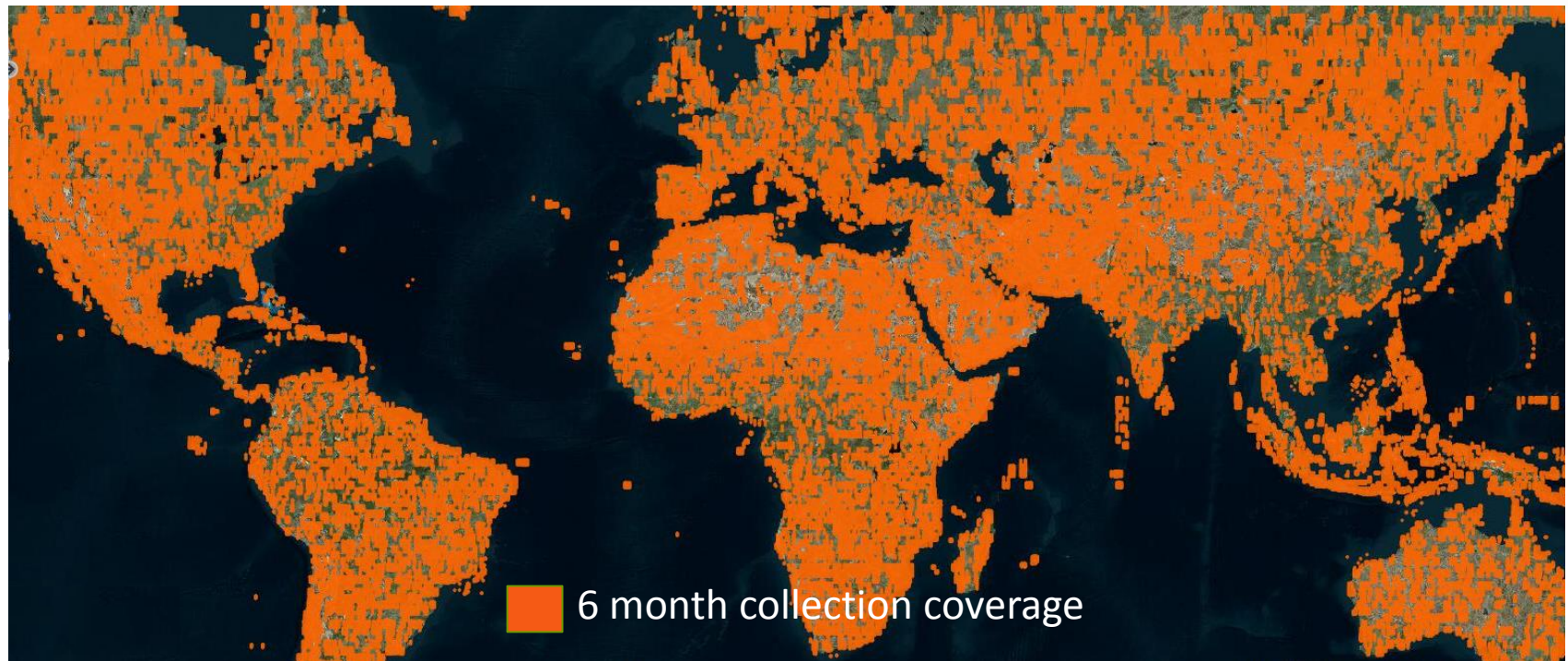


Customer Impact:

Fresh imagery for fast-moving world events

Our Currency Is Industry-Leading

Global EGD Coverage



Customer Impact:

Fresh imagery for fast-moving world events

Our Completeness Includes Superior Resolution

Closest Satellite Competitor
.70 m Resolution



Customer Impact:

Many features unidentifiable

DigitalGlobe
~.30 m Resolution ^(a)



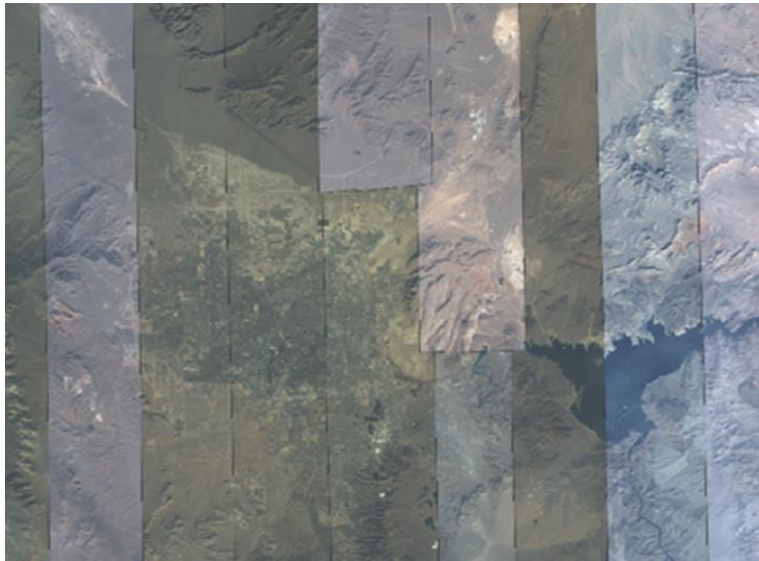
Customer Impact:

Unlocks full value of image

(a) Based on expected capabilities of WorldView-3

Our Consistency Achieves Exacting Standards

**Raw Image
Mosaic**



**Advanced Country
Coverage (ACC)**



Customer Impact:

Clean aesthetics that attract users for our LBS customers

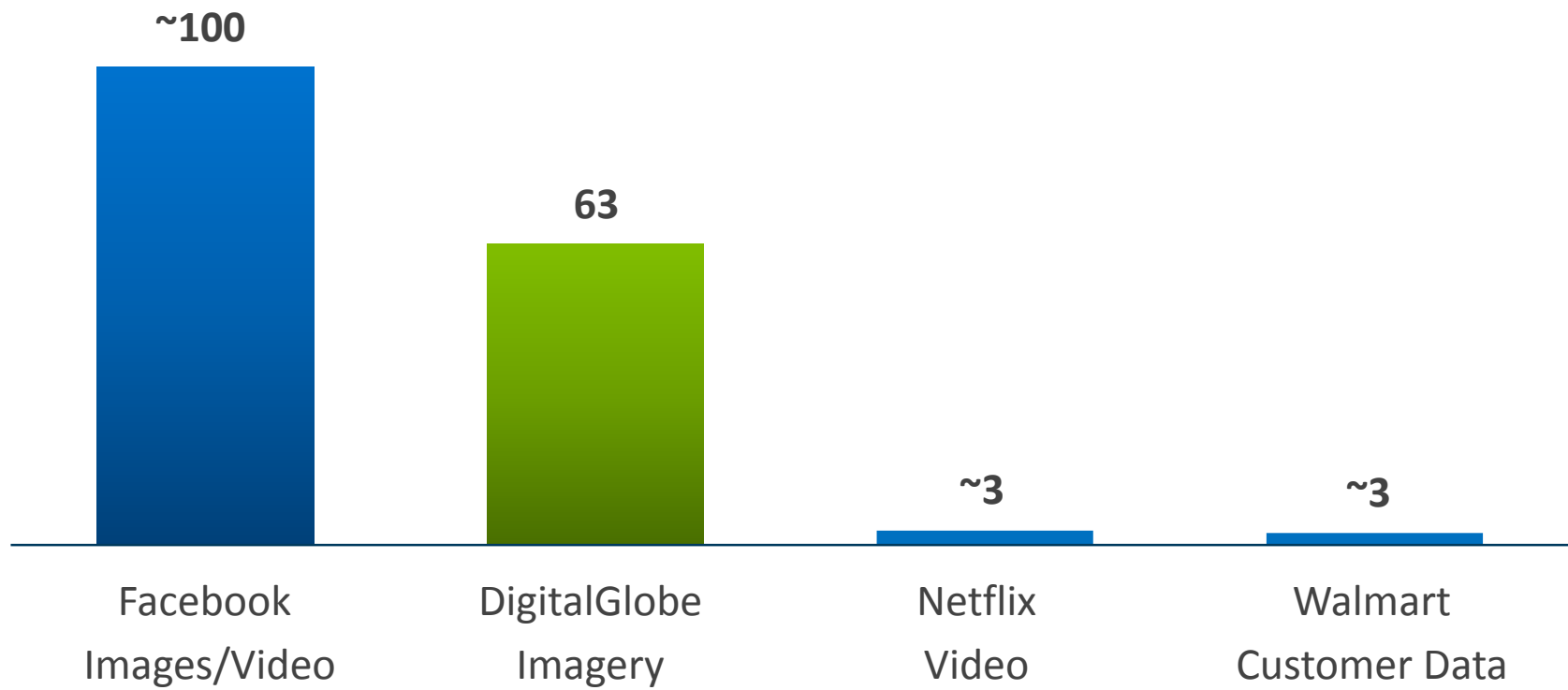
Global EGD is Our Latest Offering that Sets the Standard for the Industry

- Most **Accurate, Complete, Current** basemap
- Covers 75% of Earth's landmass
- Add ~1M km² per day (2.5x size of California)
- Capable of delivering to customer in <15 minutes

Note: As of November 2013

Our Archive Is a Large and Valuable Asset

Archive Size (Petabytes)



Sources: Facebook IPO Prospectus, May 2012; Bloomberg, May 2013; SAS, 2012

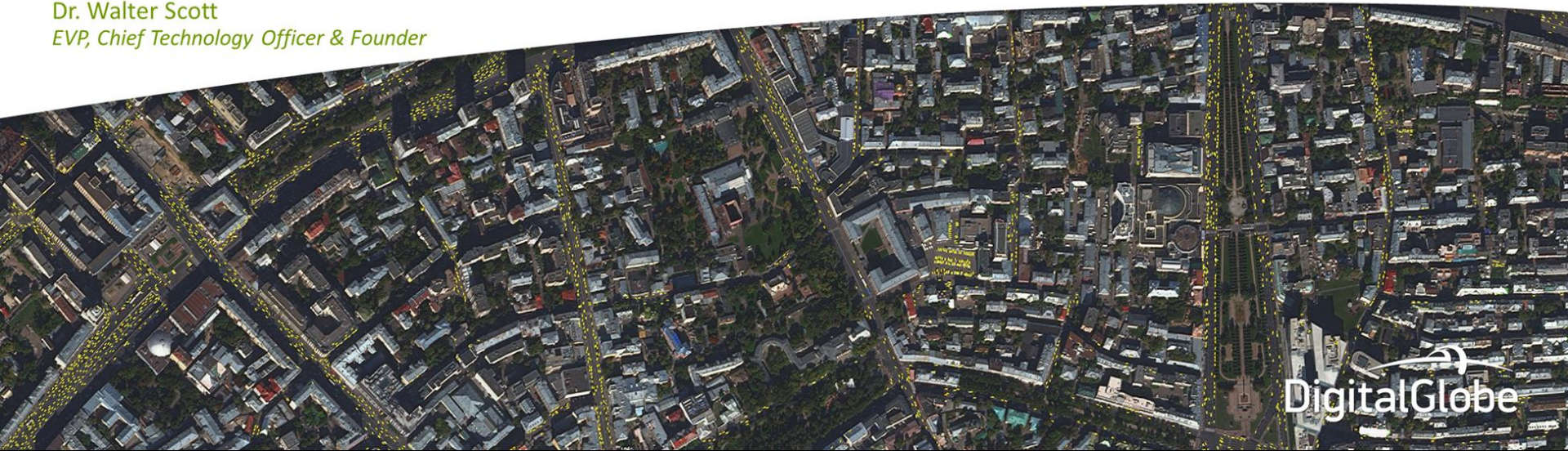
Because of Our Scale, We are Uniquely Equipped to Achieve our Vision

- Able to deliver image to customer <1 hour
- Collect Earth's landmass in 6 weeks
- Data center processes >1B km² of imagery annually
- Imagery archive of >4B km² (27x Earth's landmass)

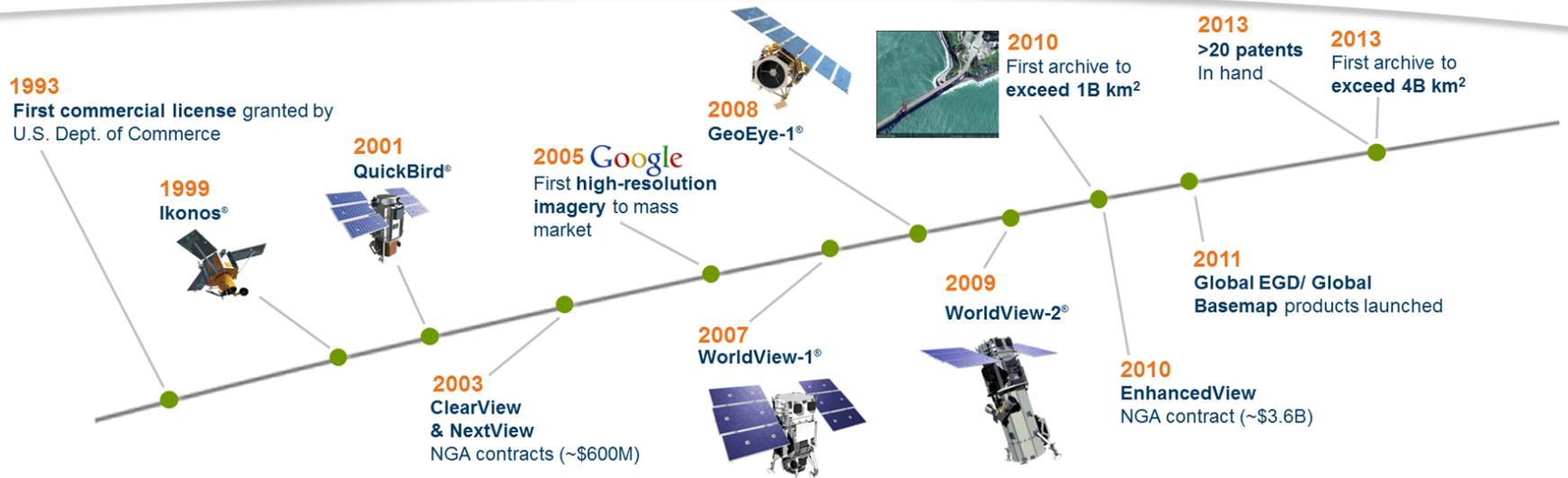
Note: As of November 2013

Innovating for Growth

Dr. Walter Scott
EVP, Chief Technology Officer & Founder



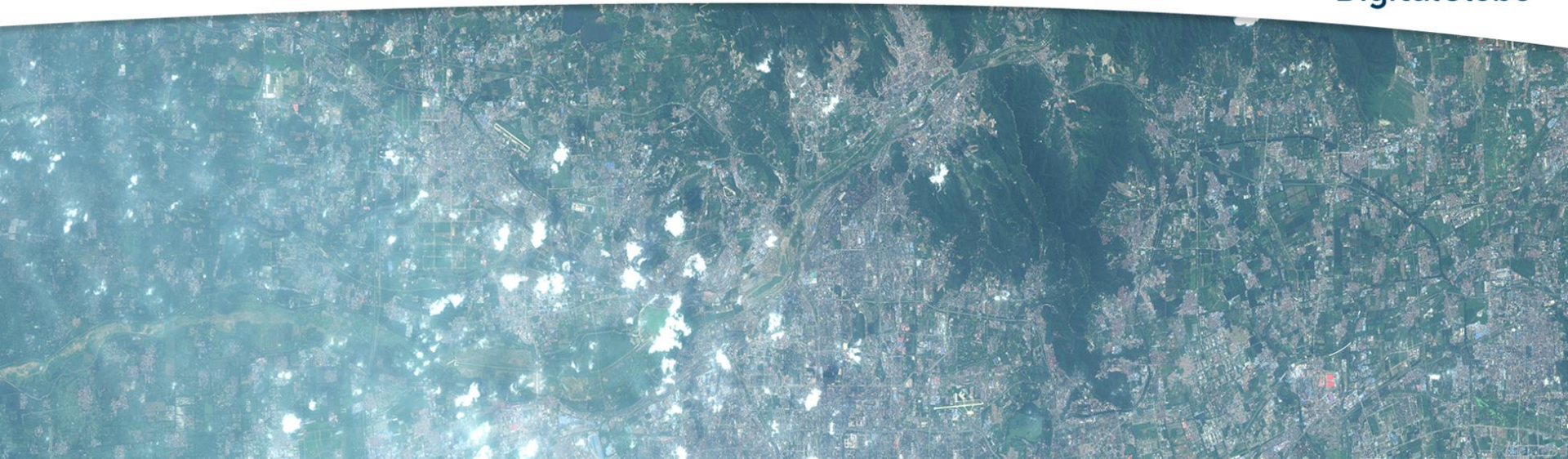
We Are the Innovators of Our Industry



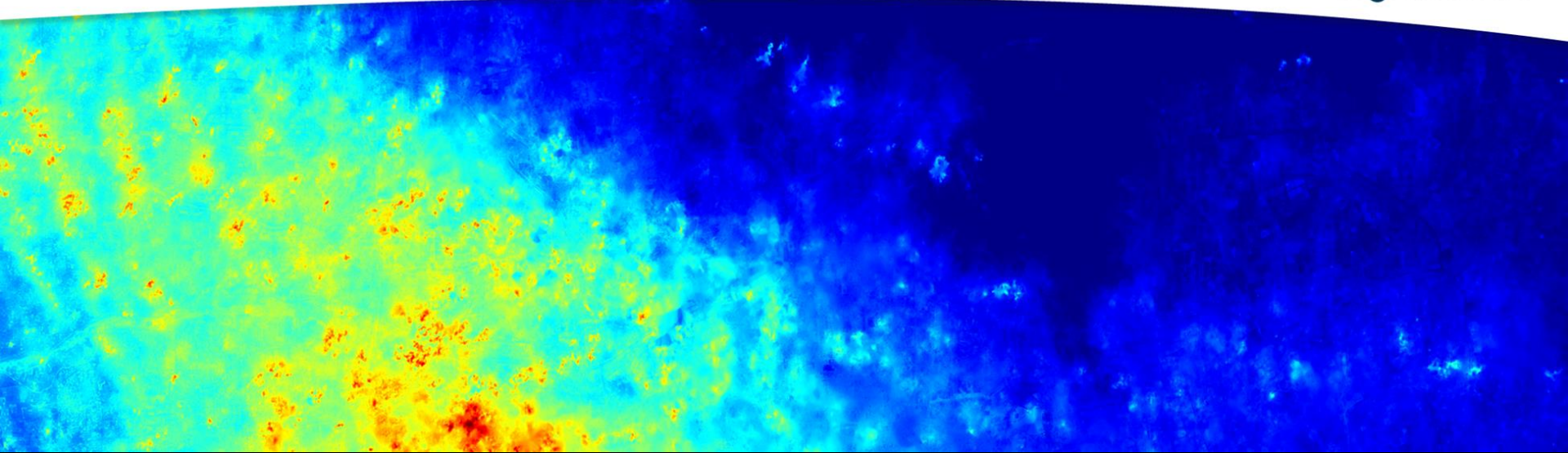
Our Advanced Constellation Enables Us to Extract High Quality Elevation Maps (“3-D”)



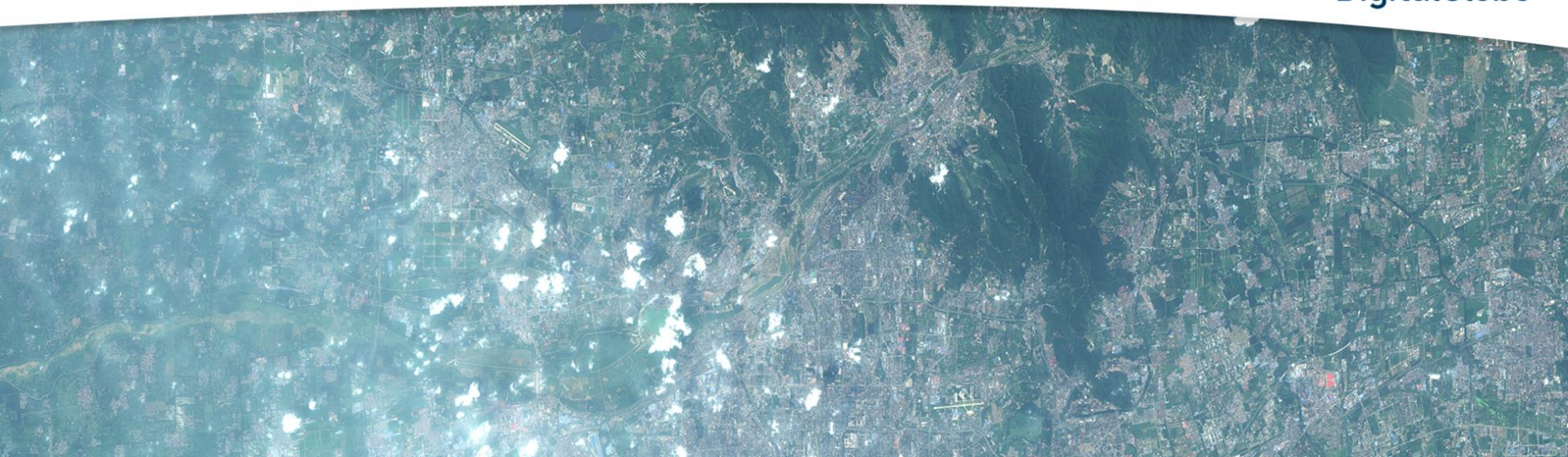
Hazy Imagery Was Previously Unusable



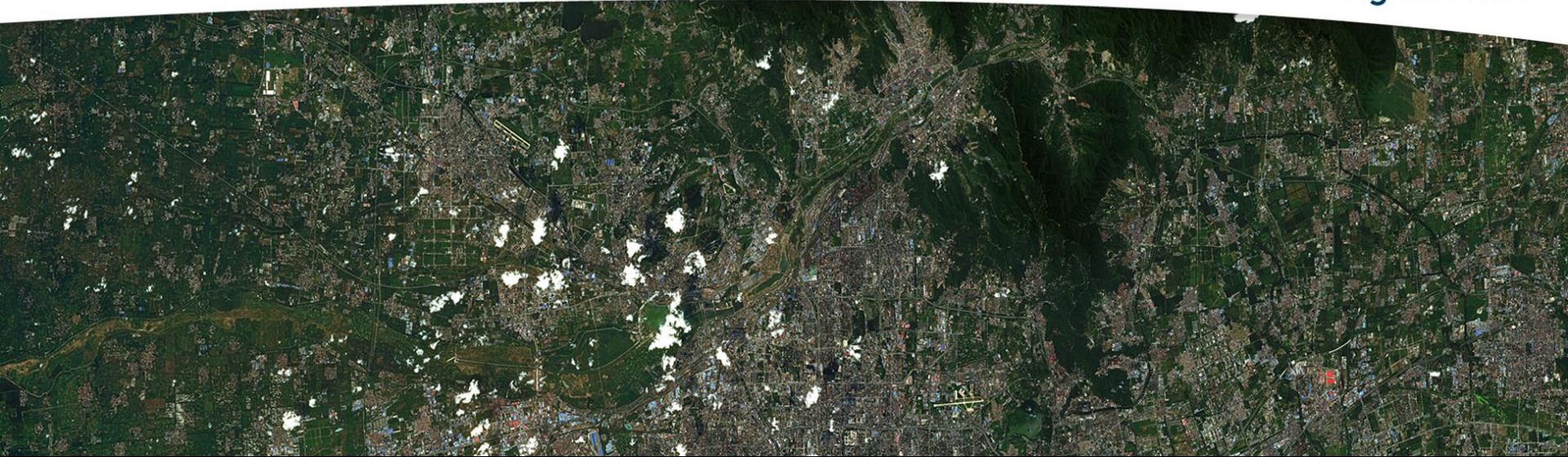
Our Technology Lets Us Measure Haze and Correct Atmospheric Distortion



Making Hazy Images...



...Usable and Consistent



...Usable and Consistent



...Usable and Consistent



To Create Geospatial Big Data™, We Must Convert Images Into Information at Scale



We Do This With Our “Image Mining” Technology



We Do This With Our “Image Mining” Technology



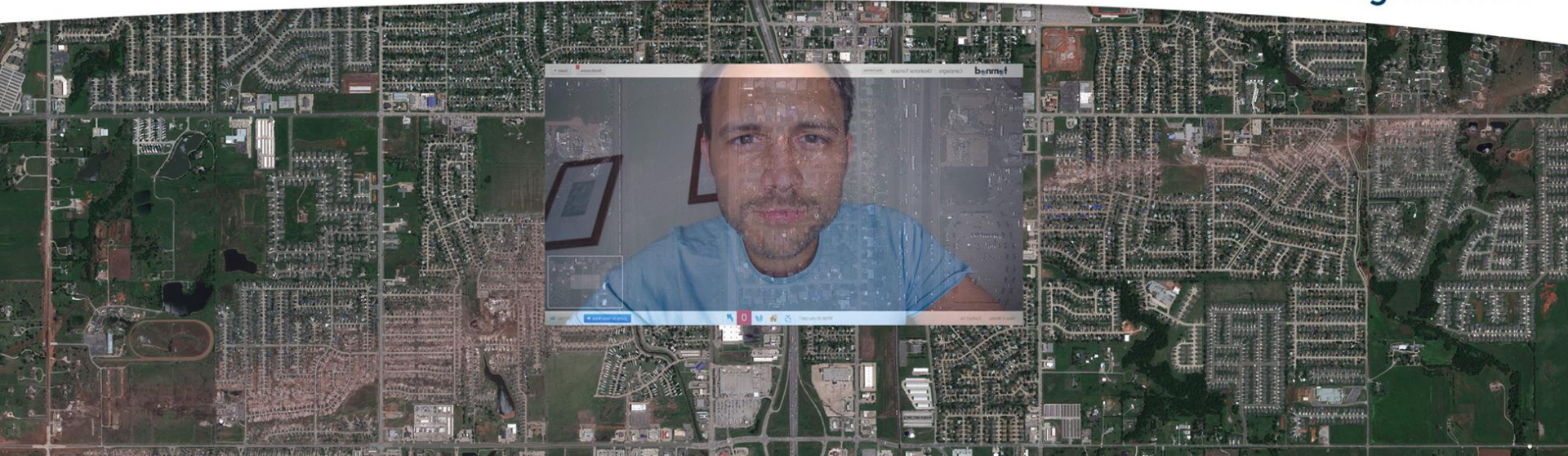
We Do This With Our “Image Mining” Technology



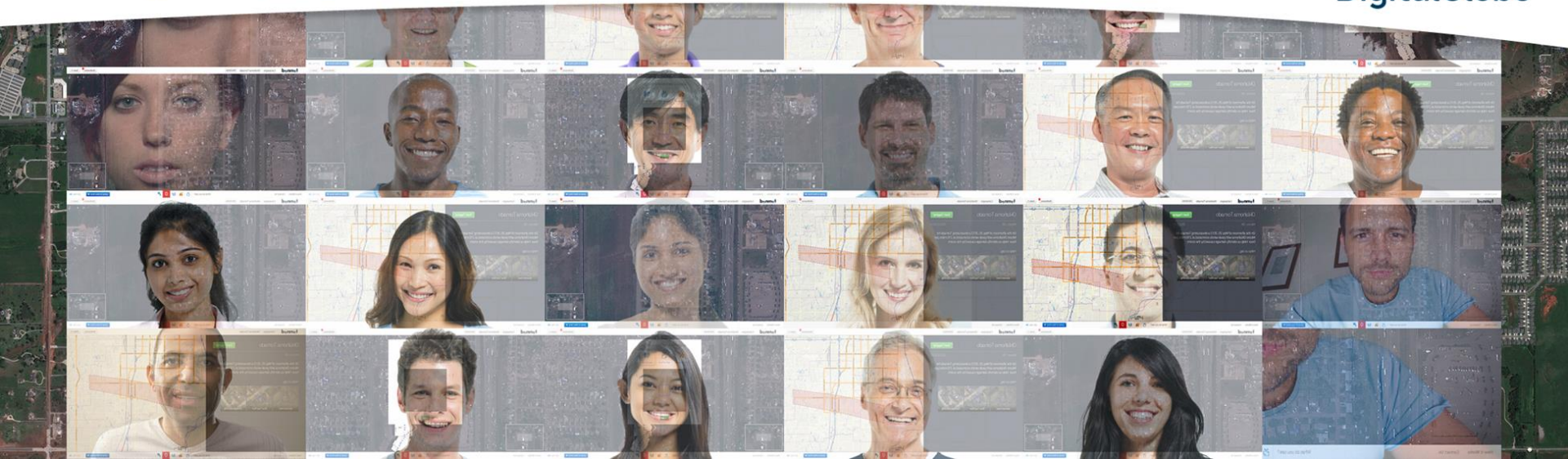
We Do This With Our “Image Mining” Technology



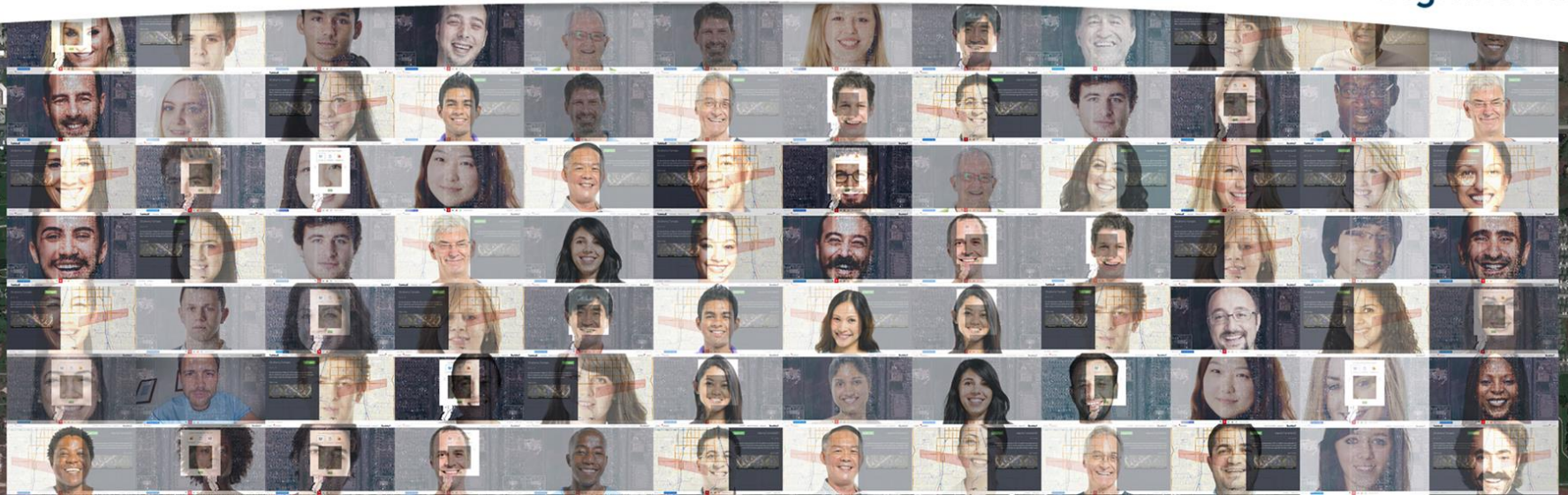
How might we quickly analyze this image?



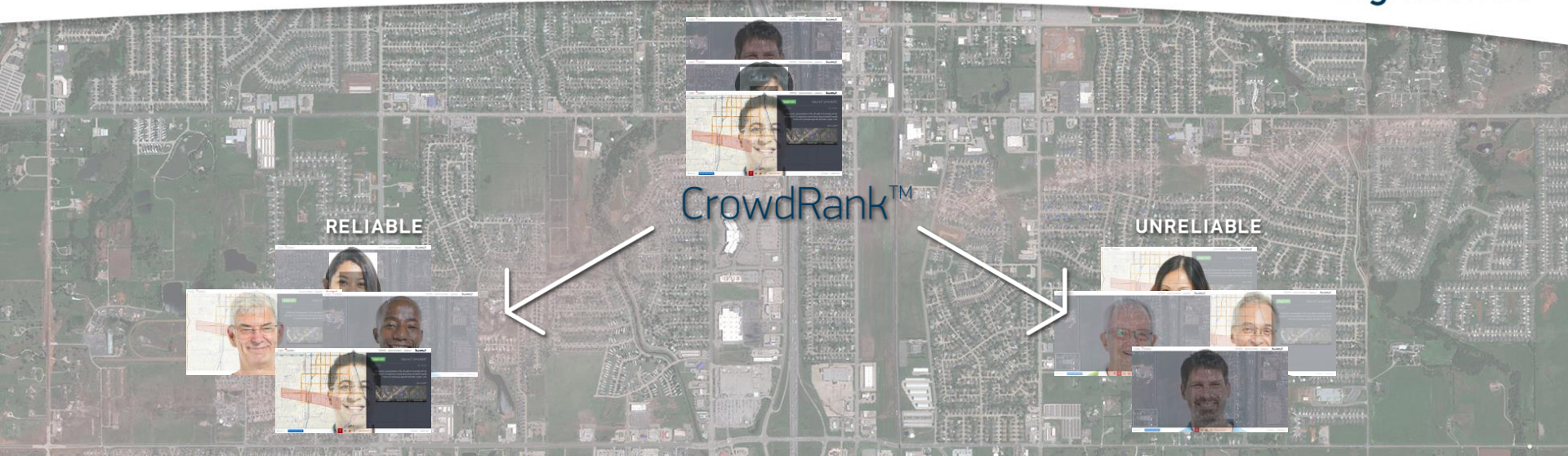
How might we quickly analyze this image?



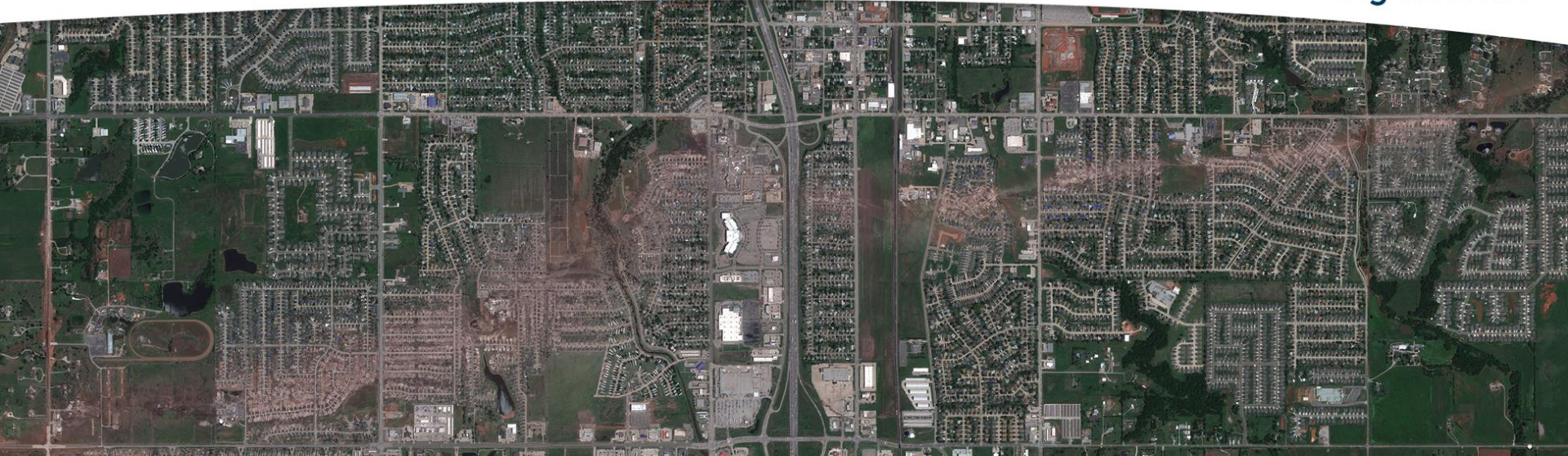
How might we quickly analyze this image?



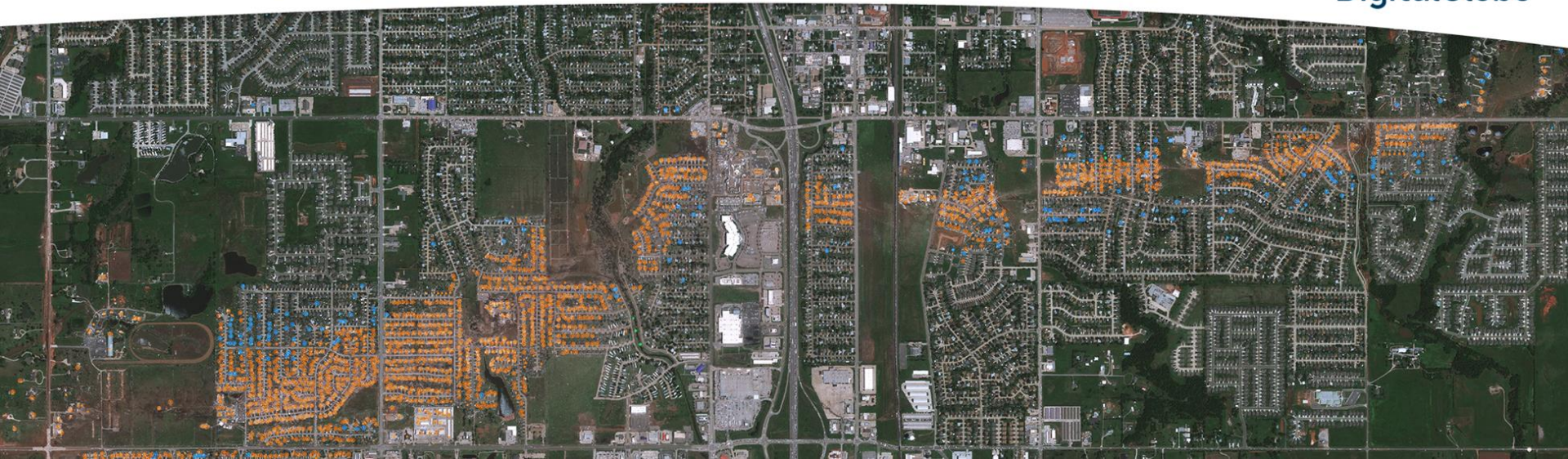
Our CrowdRank™ Technology Develops the Consensus of the Crowd



Turning This Image...



...Into This Damage Map, In an Hour



...Into This Damage Map, In an Hour

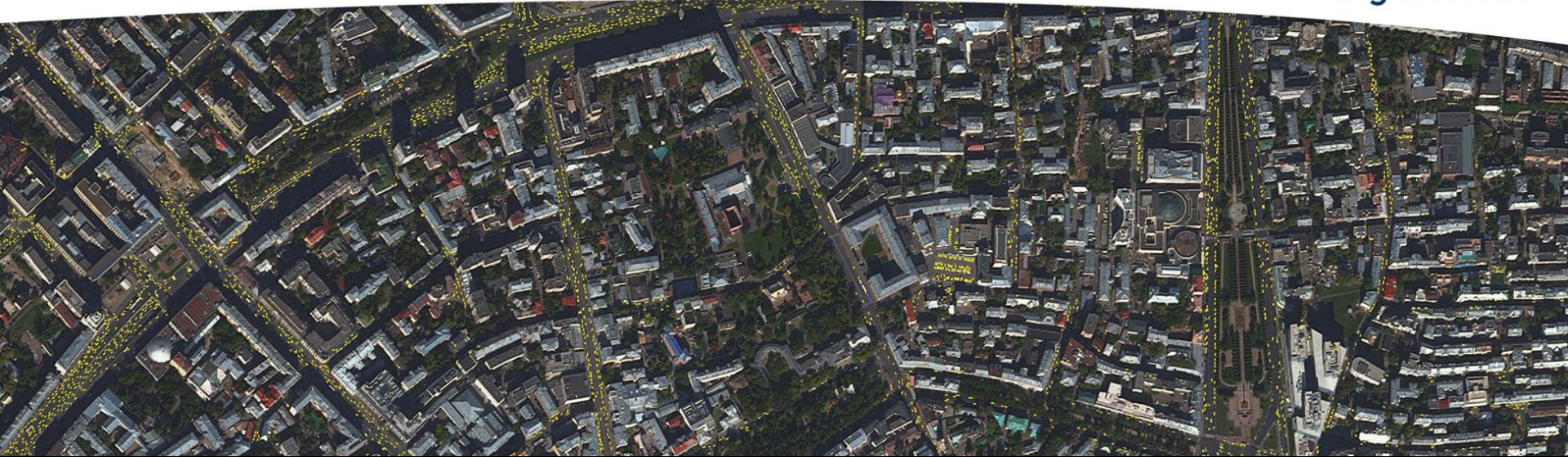


Destroyed Property Value = \$1.95M

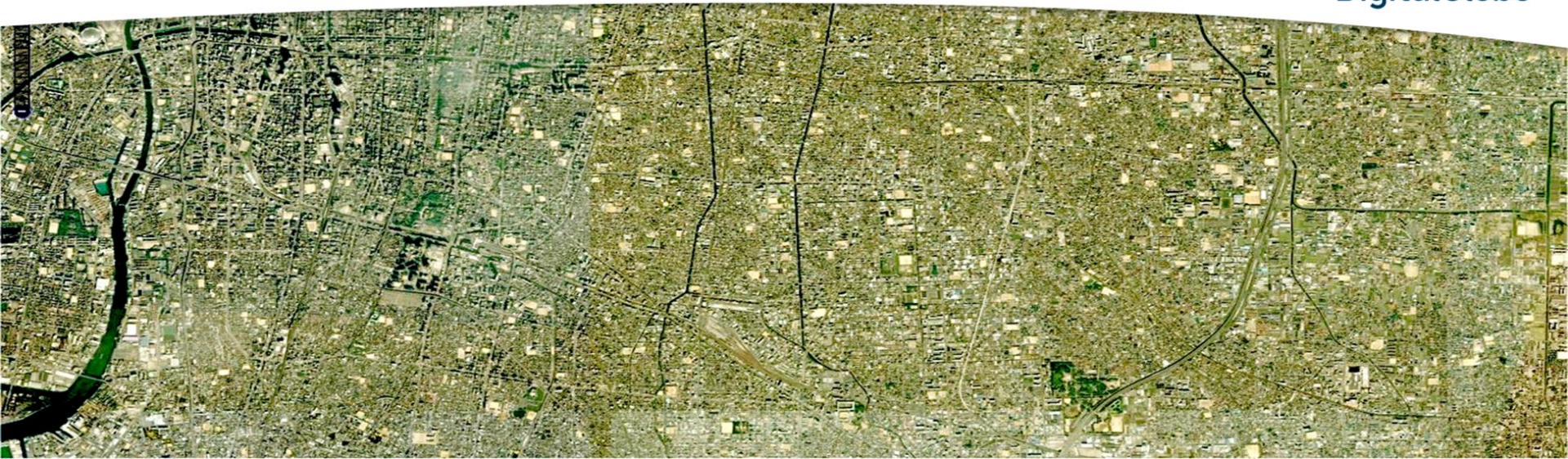
Suppose We Want to Find All of the Cars In Moscow...



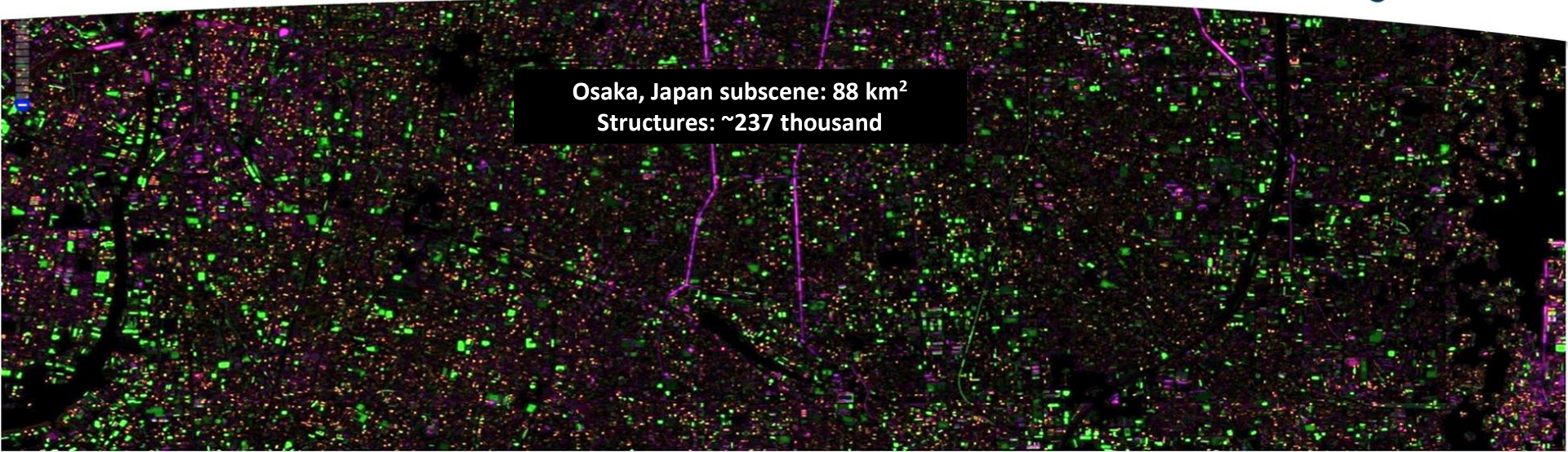
Our Image Mining Technology Does This Automatically



What About Counting Structures In Osaka, Japan?



Our Image Mining Technology Does This Automatically as Well

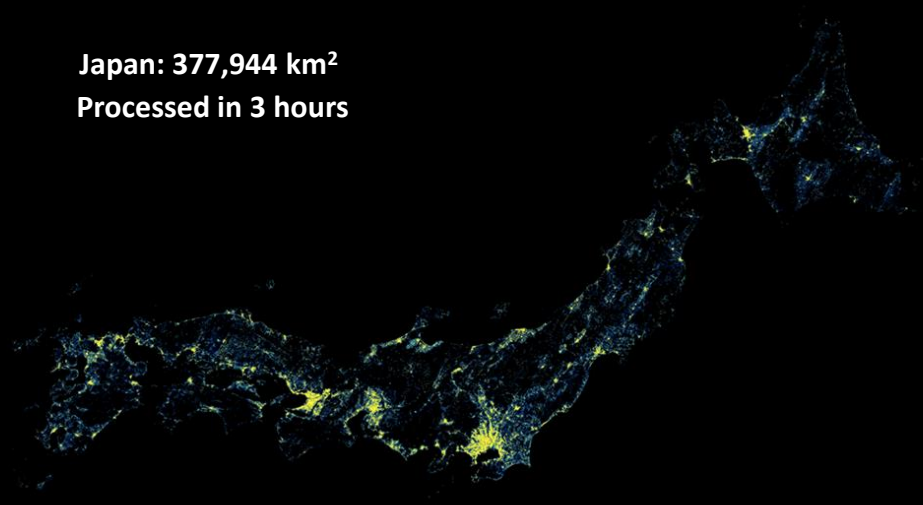
An aerial satellite image of a city, likely Osaka, Japan, with a dense network of green and purple lines overlaid on the image, representing detected structures. A central black box contains text. The image is a wide, panoramic view of a cityscape with numerous small, colored polygons and lines scattered across the terrain, indicating the results of an image mining process. The background is a grayscale satellite image of a city, with the mining results overlaid in vibrant green and purple colors. The green lines and polygons represent detected structures, while the purple lines represent other features. The overall scene is a dense urban area with a complex network of roads and buildings.

Osaka, Japan subscene: 88 km²
Structures: ~237 thousand

And We Can Do It at Country or Global Scale, Quickly



Japan: 377,944 km²
Processed in 3 hours



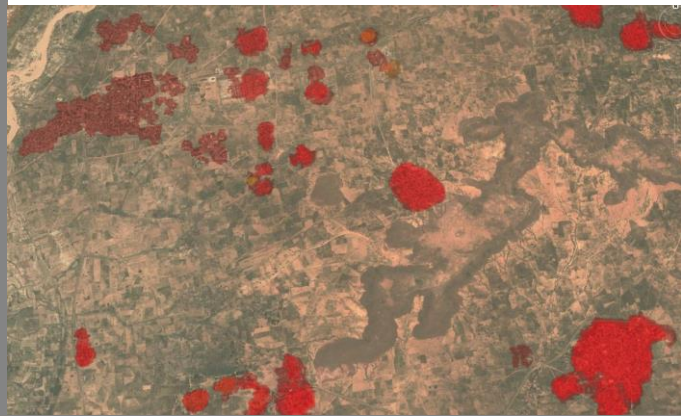
Our Image Mining Technology is Supporting Customers Today



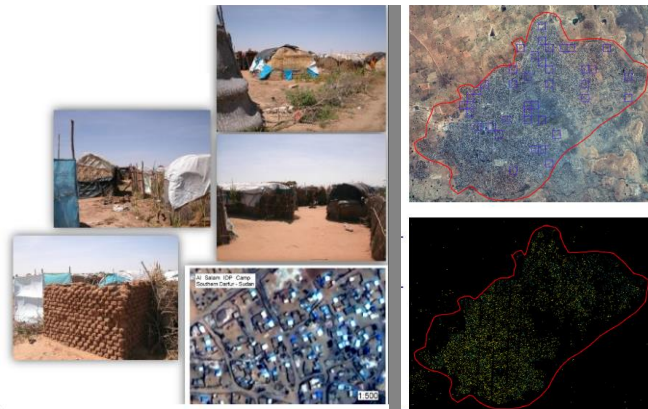
Our Image Mining Technology is Supporting Customers Today



Finding remote villages in Africa



Counting refugee shelters in Darfur



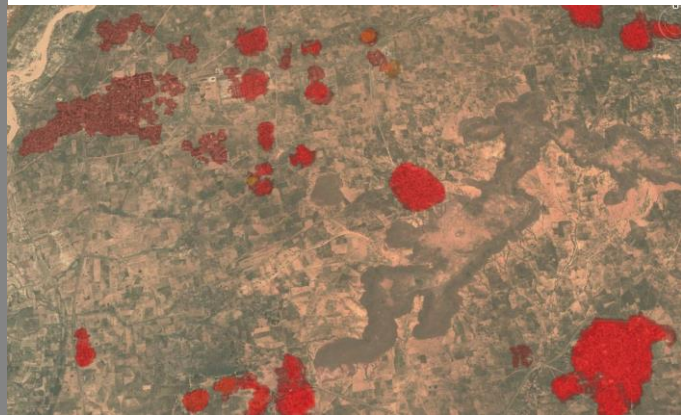
Herding the crowd



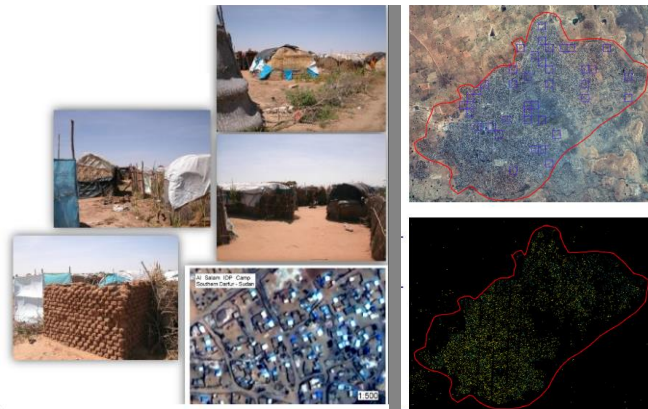
Our Image Mining Technology is Supporting Customers Today



Finding remote villages in Africa



Counting refugee shelters in Darfur



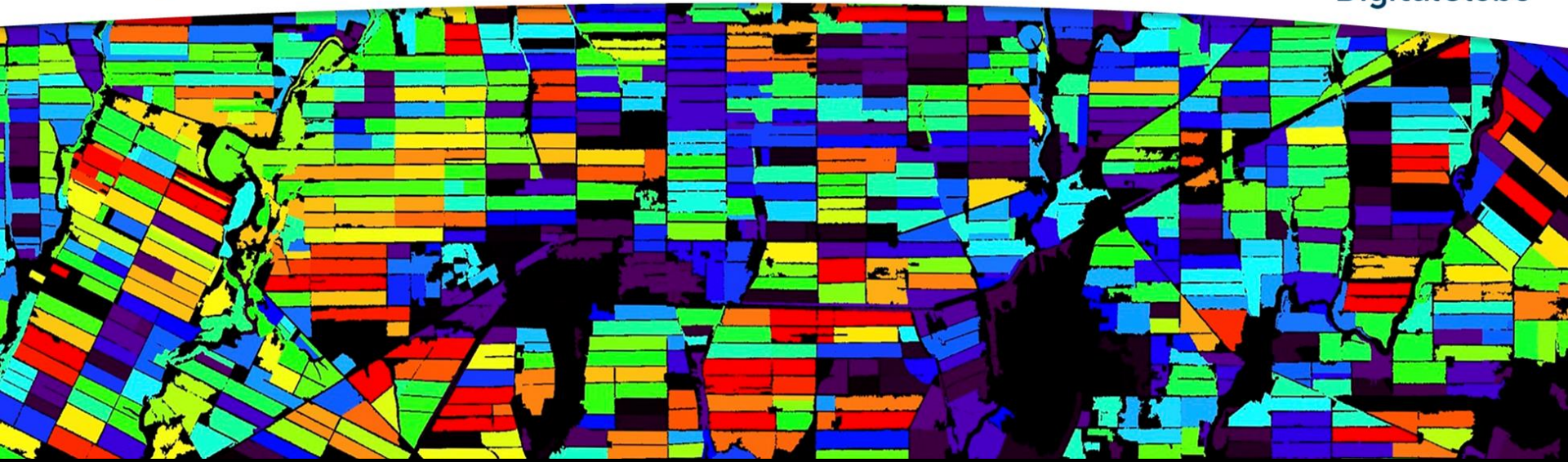
Herding the crowd



Starting With This Image of an Agricultural Area,



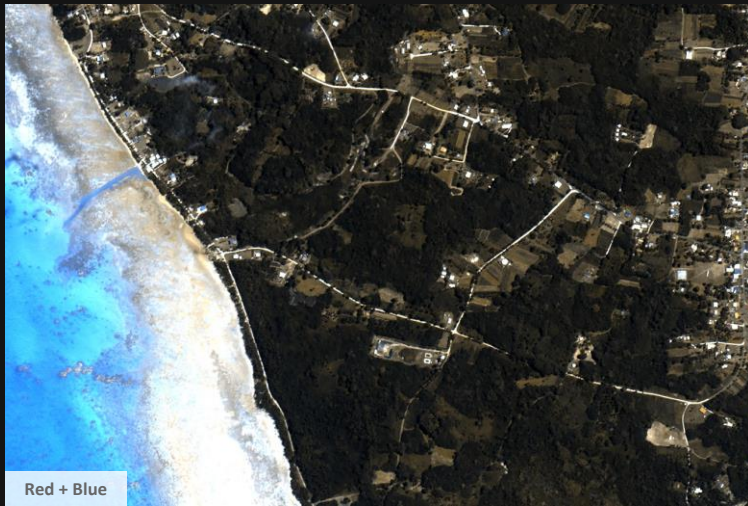
Our Image Mining Technology Also Recognizes Agricultural Field Boundaries



...And With Our 8-band Data, Also Identifies Crop Types



WorldView-3 Will Extend Our Lead In Color (Multispectral) Information



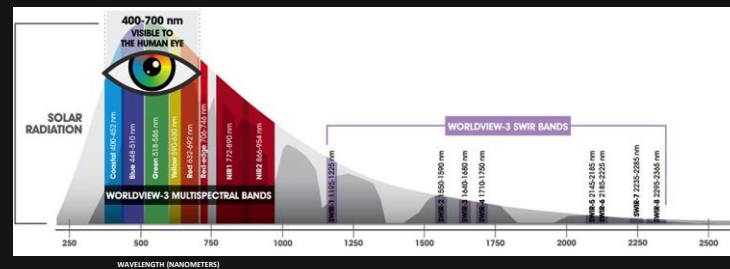
WorldView-3 Will Extend Our Lead In Color (Multispectral) Information



Red + Blue + Green

If 3 colors are better than 2,

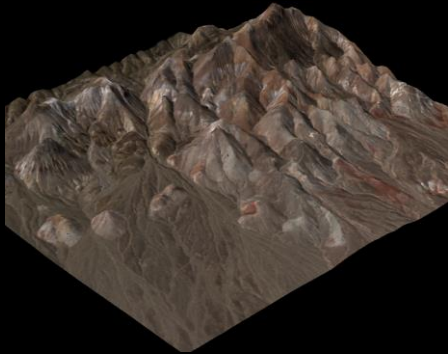
How much better are WorldView-3's **16** colors?



WorldView-3 Will See the Earth In New Ways By...



finding minerals



sensing moisture



mapping passable terrain



penetrating smoke



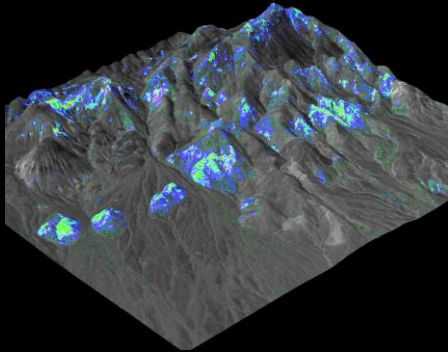
seeing the earth clearly



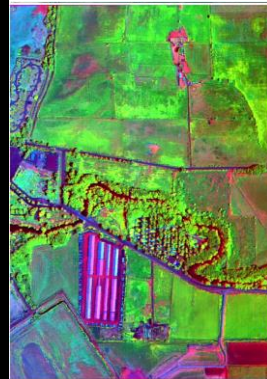
WorldView-3 Will See the Earth In New Ways By...



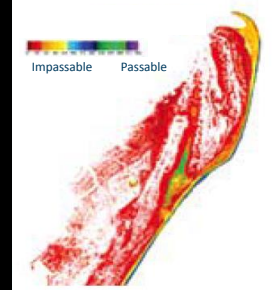
finding minerals



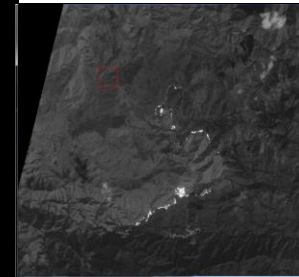
sensing moisture



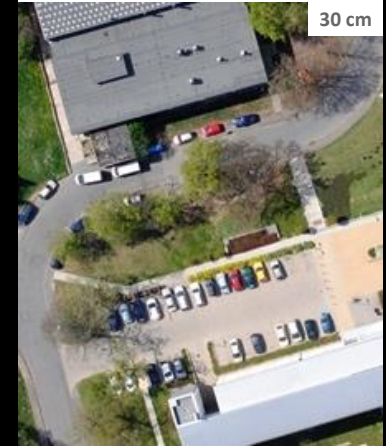
mapping passable terrain



penetrating smoke



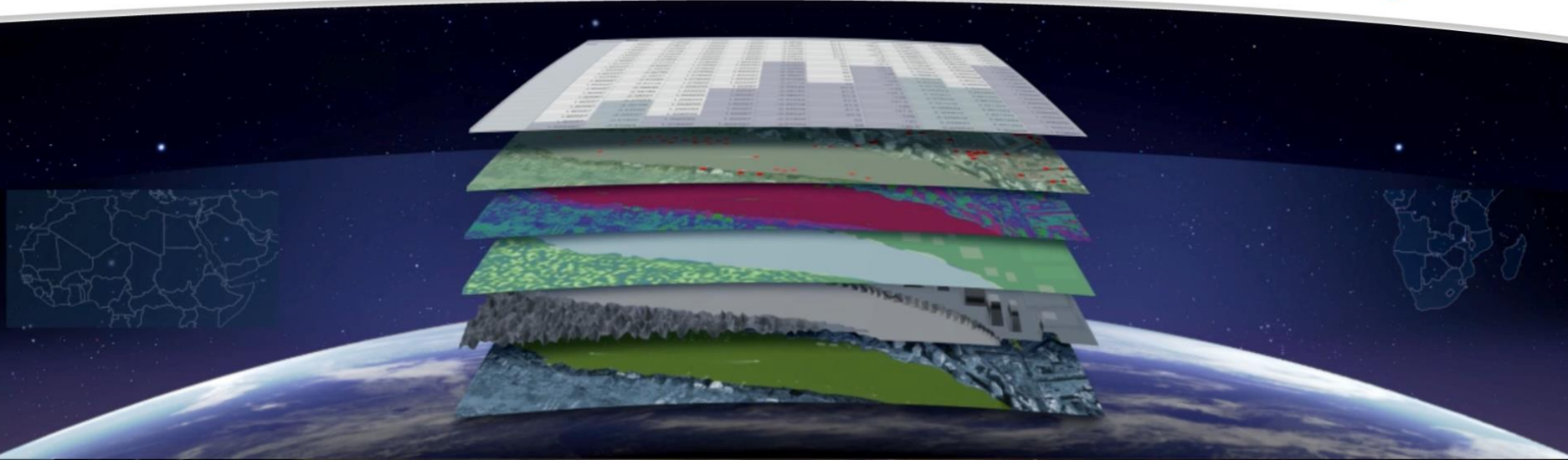
seeing the earth clearly



Geospatial Big Data™ is a Living Digital Inventory of the Earth's Surface



Geospatial Big Data™ is a Living Digital Inventory of the Earth's Surface



Geospatial Big Data™ Supports Two Distinct Classes of Global Scale Use Cases



Geospatial Big Data™ Supports Two Distinct Classes of Global Scale Use Cases



“Show Me There”



Geospatial Big Data™ Supports Two Distinct Classes of Global Scale Use Cases



Geospatial Big Data™ Supports Two Distinct Classes of Global Scale Use Cases



Geospatial Big Data™ Supports Two Distinct Classes of Global Scale Use Cases



Geospatial Big Data™ Supports Two Distinct Classes of Global Scale Use Cases

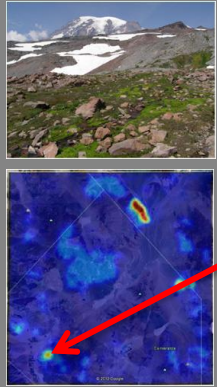


“Show Me There”



Crowdsourced Points of Interest

“Show Me Where”



Actual Location

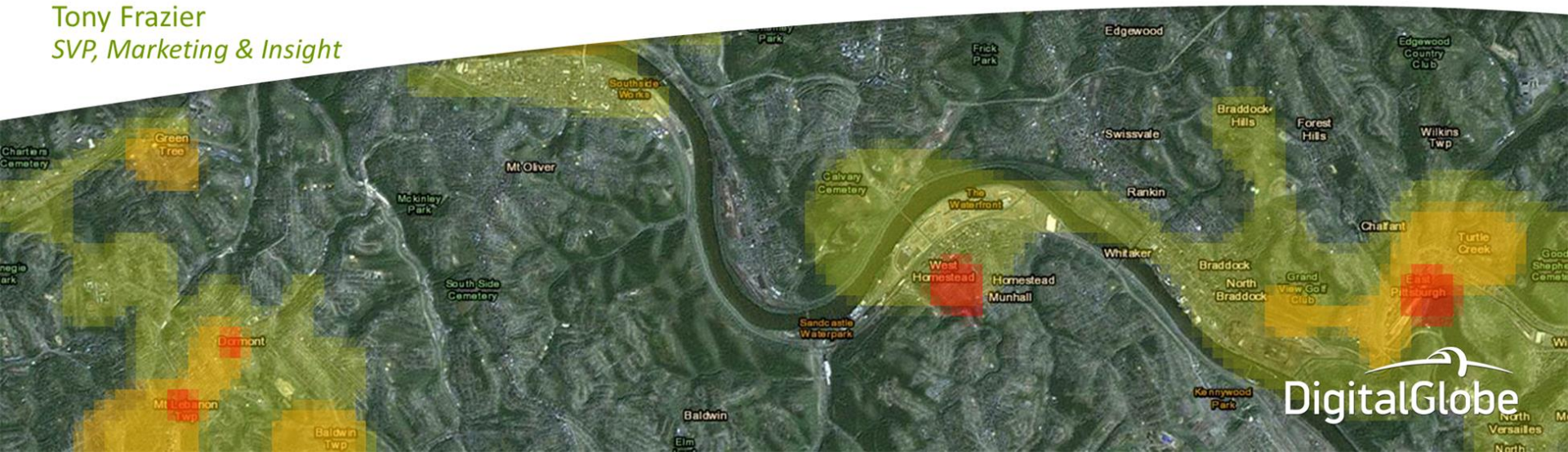
Geospatial Big Data™ Accelerates Us Toward Our Vision



Innovating for Growth

Tony Frazier

SVP, Marketing & Insight

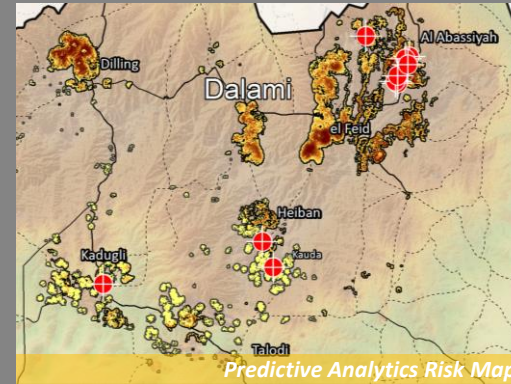


Geospatial Big Data Supports Two Distinct Classes of Global Scale Use Cases

“Show Me There”

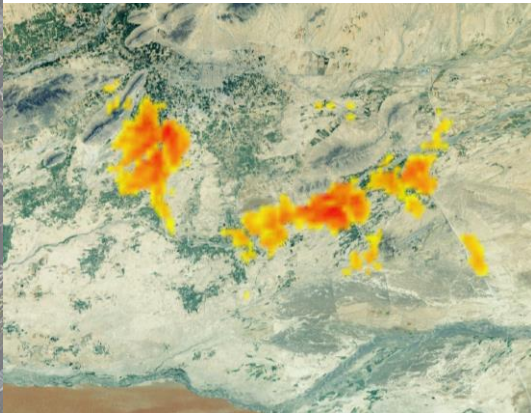


“Show Me Where”



And It Uniquely Enables Many Applications of “Show Me Where...”

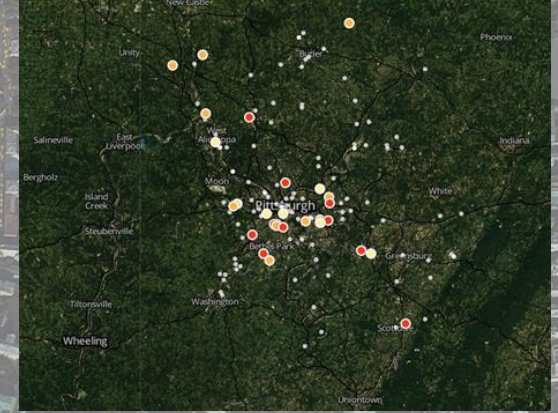
...threats are highest



...farmers are cheating on their subsidies



...copper theft is most likely



DigitalGlobe is Uniquely Positioned to Deliver “Show Me Where” Applications



Imagery



High Resolution Stereo Imagery

Over 5 million km² of stereo imagery coverage in Asia, Africa, and South America

Information



Precision Elevation Model

Produce 2 m resolution elevation data for an order of magnitude less expensive than aerial

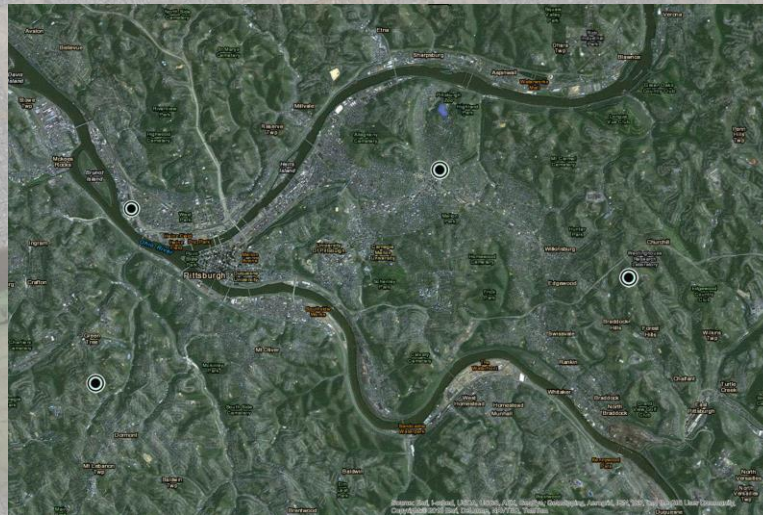
Insight



Cloud Based Terrain Analytics

“Show Me Where” I can be seen with real-time line of site analytic assessments

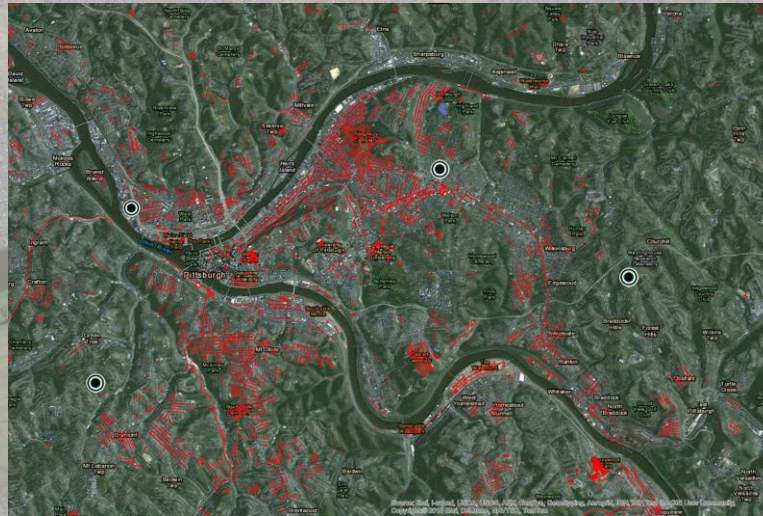
Our Capabilities Answer “Show Me Where” Questions – Start with Event Locations



Examples

- Prior Copper Theft

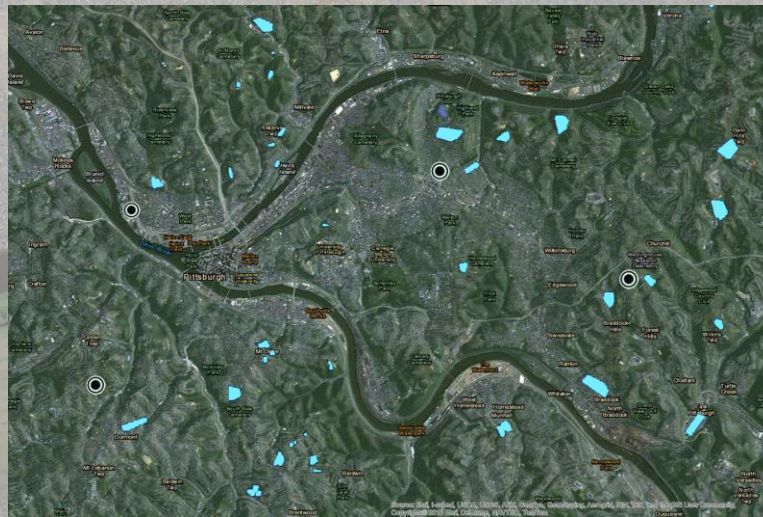
Our Capabilities Answer “Show Me Where” Questions – Then, Add Physical Geography



Examples

- Service Roads
- Construction Sites

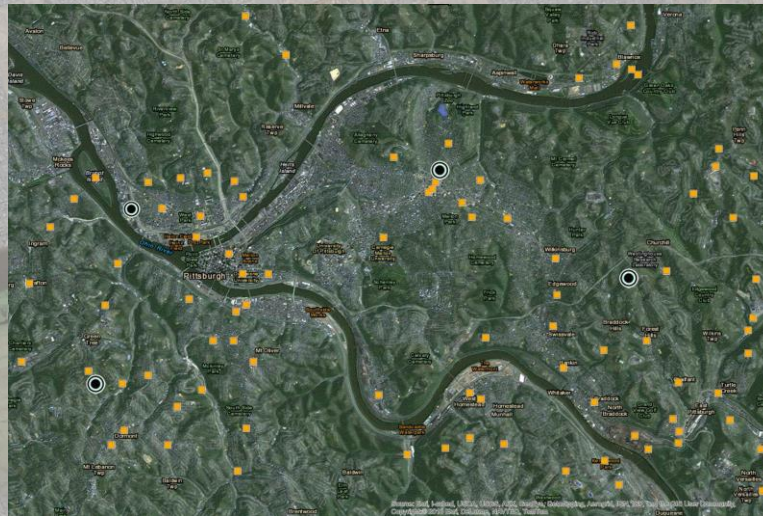
Our Capabilities Answer “Show Me Where” Questions – Then, Add Physical Geography



Examples

- Service Roads
- Construction Sites

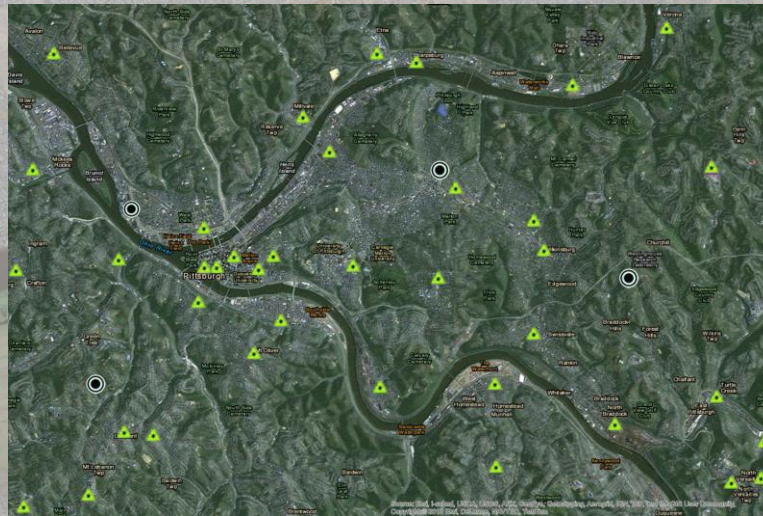
Our Capabilities Answer “Show Me Where” Questions – and Add Human Geography



Examples

- Abandoned Homes
- Armed Robberies

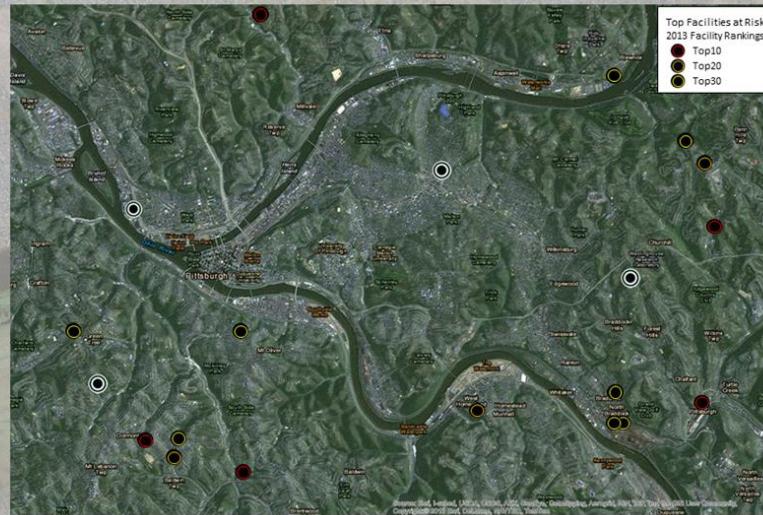
Our Capabilities Answer “Show Me Where” Questions – and Add Human Geography



Examples

- Abandoned Homes
- Armed Robberies

Our Capabilities Answer “Show Me Where” Questions – The Result is Risk Prediction



Outcome

- Facility Risk Index
- Improved Security
- 54% Theft Reduction

We Are Answering “Show Me Where” Questions for the USG



Deeply Embedded Across USSOCOM



SOCOM



PACOM



SOUTHCOM



AFRICOM



EUCOM



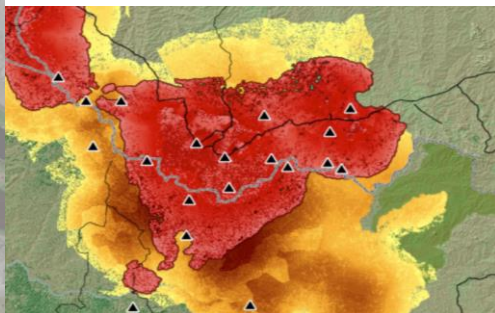
CENTCOM

Supporting Critical National Security Missions

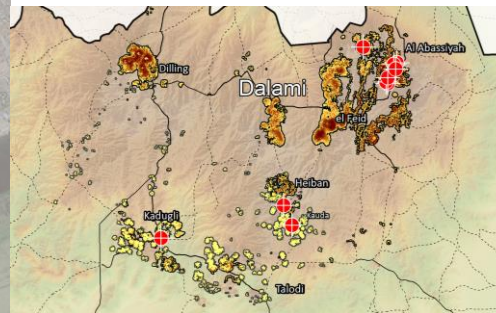
- Counter-Proliferation
- Counter-Terrorism
- Counter-Insurgency
- Counter-Narcotics
- Intelligence Surveillance Reconnaissance Tasking and Exploitation
- Stability Operations
- Socio-Cultural/Human Terrain

Here Are Three Specific Cases of “Show Me Where...”

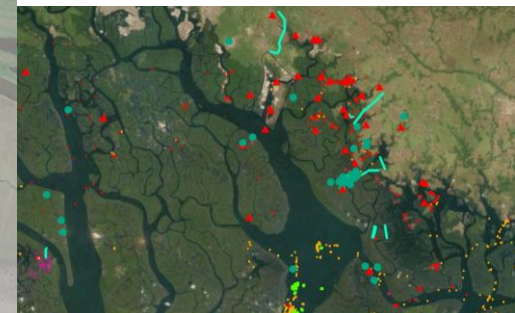
...risks of insurgent activity are highest



...threats to civilians are highest

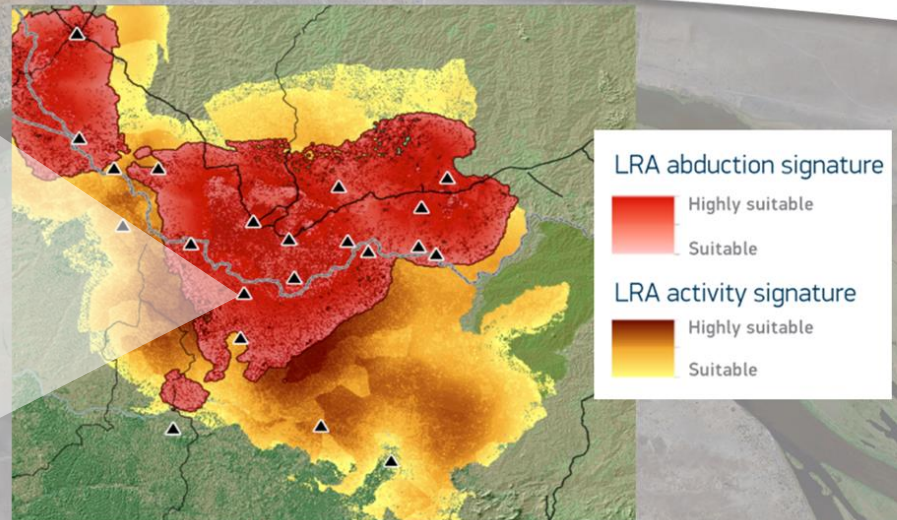


...oil theft is most likely

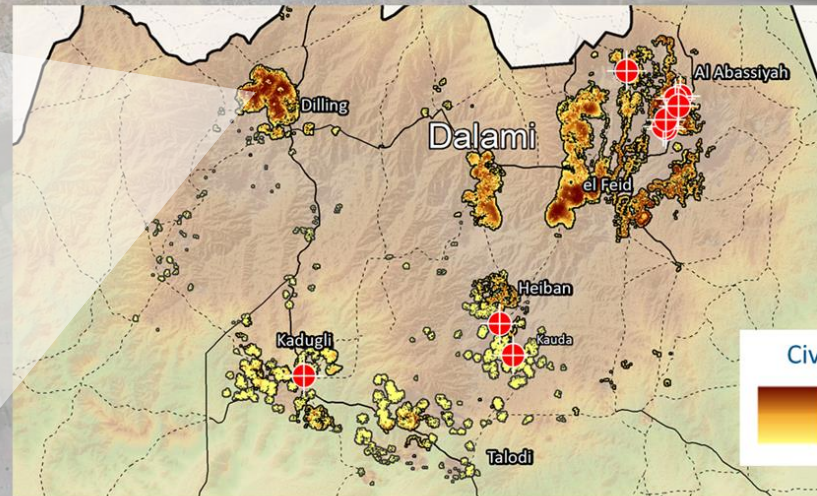


Expanding from Government into Commercial

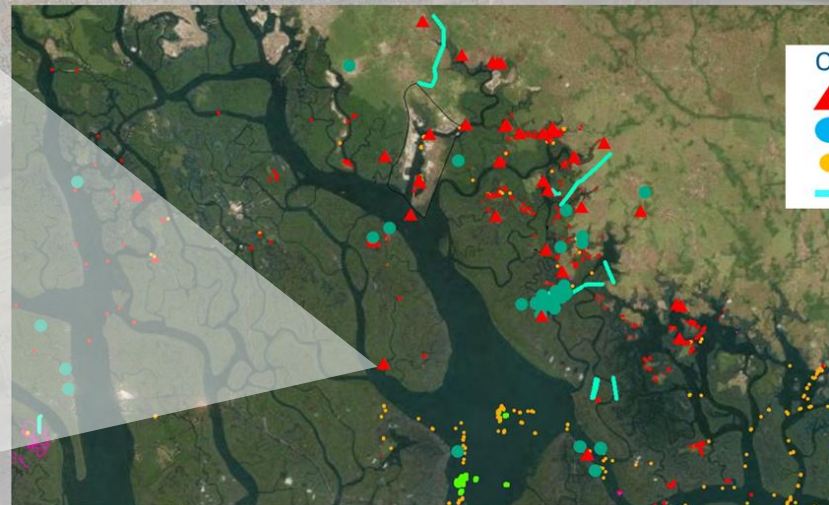
We Are Using Our Capabilities to Guide Special Ops Resources for the USG



We Are Using Our Capabilities to Identify Threats in South Sudan for Satellite Sentinel Project



We Are Using Our Capabilities to Identify Pipeline Oil Theft for Foreign Governments



Oil Theft Risk

- ▲ Suspicious Event
- Industry Infrastructure
- Barge/Boat
- Pipeline

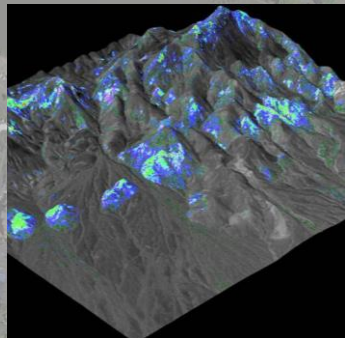
Geospatial Big Data Accelerates Us Toward Our Vision



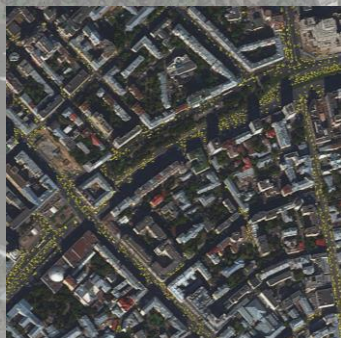
We Invite You to Explore Our Innovation Showcase



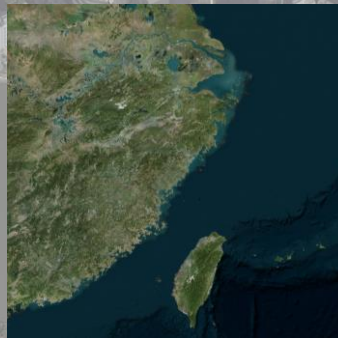
**WorldView-3
Capabilities**



**Image
Mining**



**Global Basemap/
Advanced Country Coverage**



**Human
Landscape**

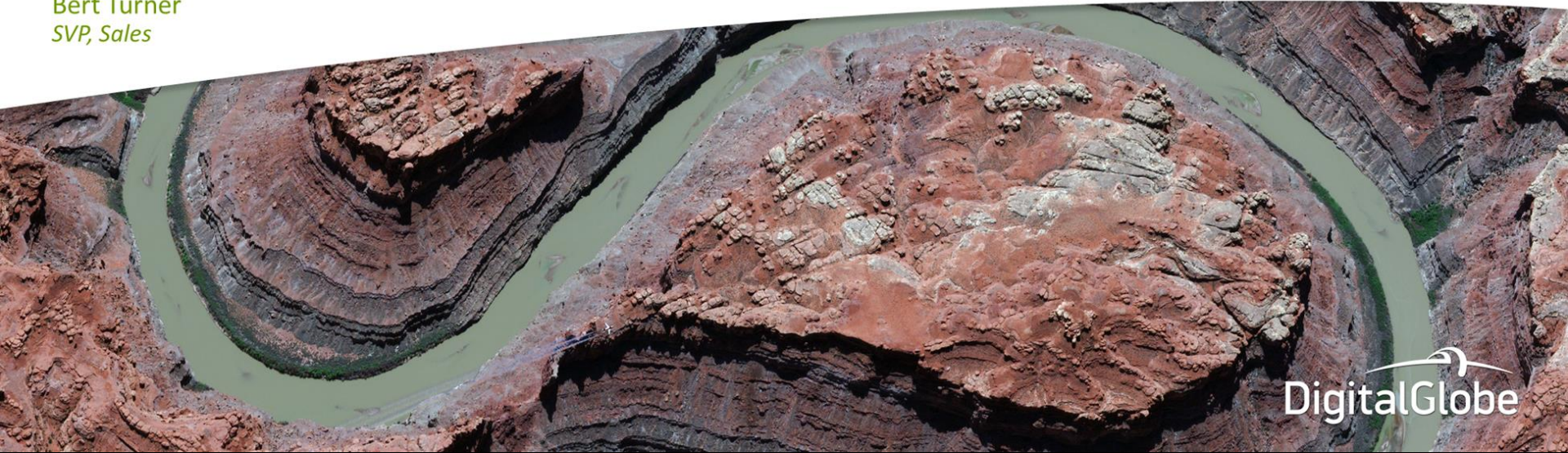


**FirstLook/
Crowdsourcing**



Delivering Customer Growth

Bert Turner
SVP, Sales



 DigitalGlobe

We Have Initiatives to Drive Customer Growth

Focused on Customer Needs

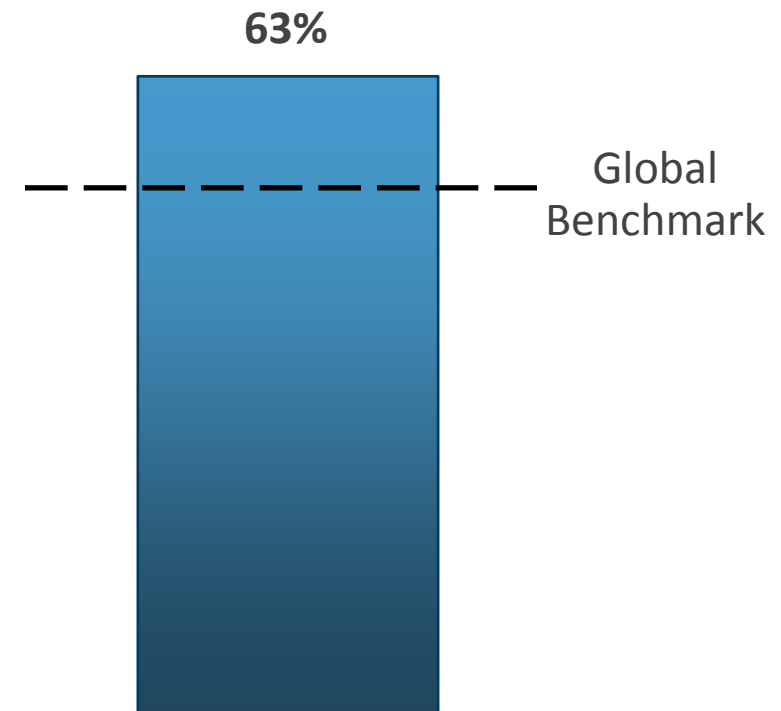


**Committed
to Customers**



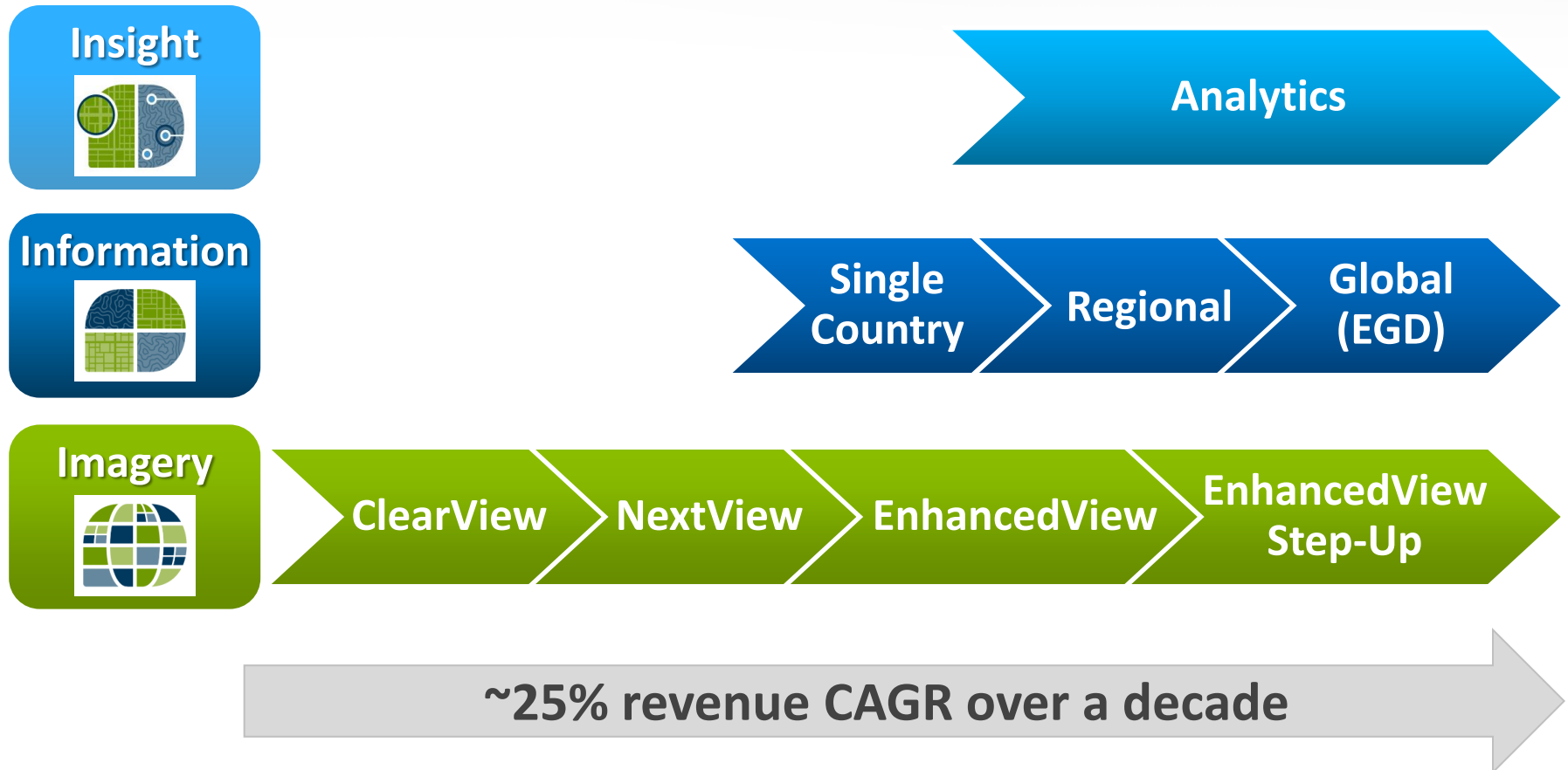
**A3C
Quality**

Loyalty Exceeds Industry Average By ~20%



Source: Walker 2012; Global Benchmark represents B2B IT companies

We Are Growing USG by Introducing New Offerings



We Are Growing DAP with Superior Economics

Asian DAP

Insight



FirstLook

Information



Imagery



Raw Imagery

Direct Access

~15% revenue CAGR over five years

We Are Growing International Civil by Solving Big Problems in Large Territories

Sovzond (Russia)

Insight



Information



Imagery



Regional Basemap

Raw Imagery

~60% revenue CAGR over five years



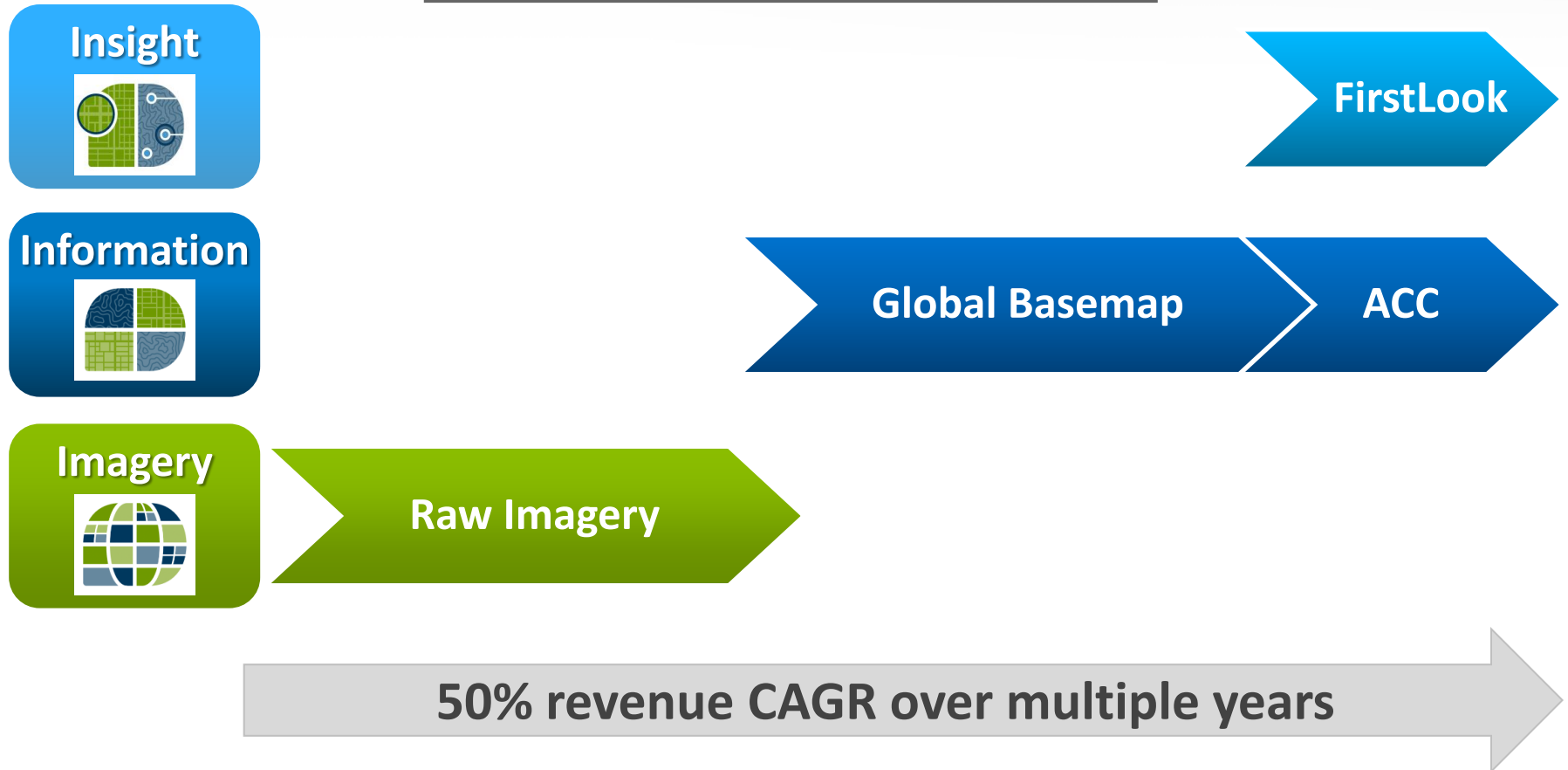
Mikael Bolsunovsky
Executive Manager



“DigitalGlobe imagery helped very much, for instance to understand what’s going on with forestry or what’s going on with agriculture to understand what the prospects for harvesting, for some areas, and of course it is the imagery and products and services are very much appreciated.”

We Are Growing LBS with New Offerings

LBS Customer



We Are Growing Industry Verticals by Helping Customers Solve Problems More Efficiently

Newmont Mining

Insight



Information



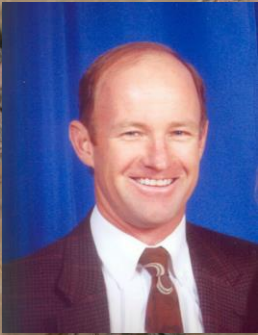
Imagery



Elevation Data and
Advanced Orthos

Raw Imagery

~10% revenue CAGR over five years



Perry Eaton
Chief Geoscientist



**“...gain the advantage in the relationship
proven to be a great resource
...kudos to DigitalGlobe for how they’ve
managed that part of their business.”**

We Are Growing Our NGO Business by Expanding Our Offerings

Satellite Sentinel Project

Insight



Analytics

Information



Imagery



Raw Imagery

~20% revenue CAGR over multiple years

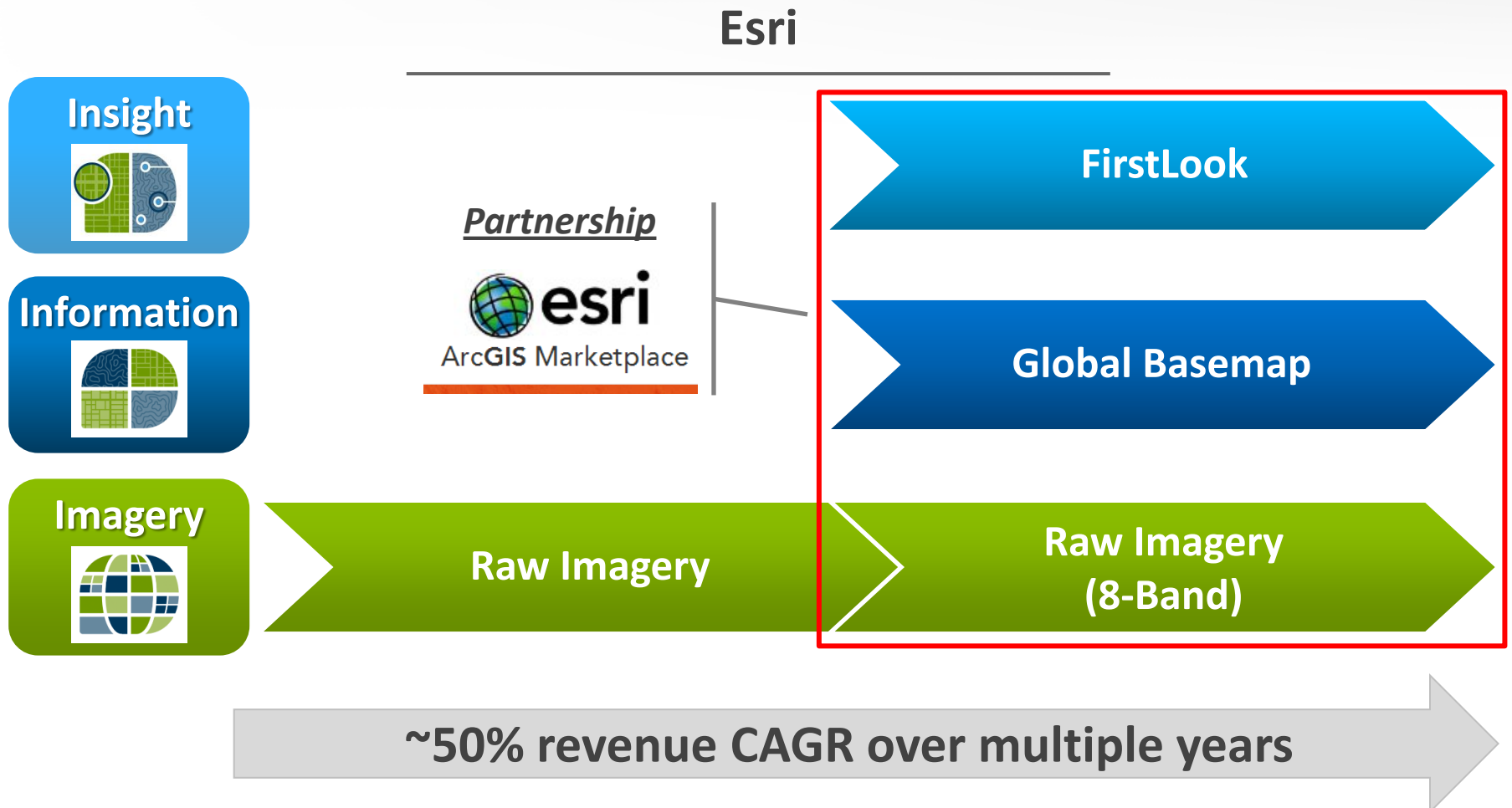


Akshaya Kumar
Sudan and South
Sudan Policy Analyst

“quick and accurate and timely...
...our dedicated imagery analyst
was able to identify that bomber
where it came from
monitor where it’s being deployed”

Satellite Sentinel Project

We Are Developing, Expanding, and Optimizing Our Global Ecosystem





Lawrie Jordan
Director of Imagery

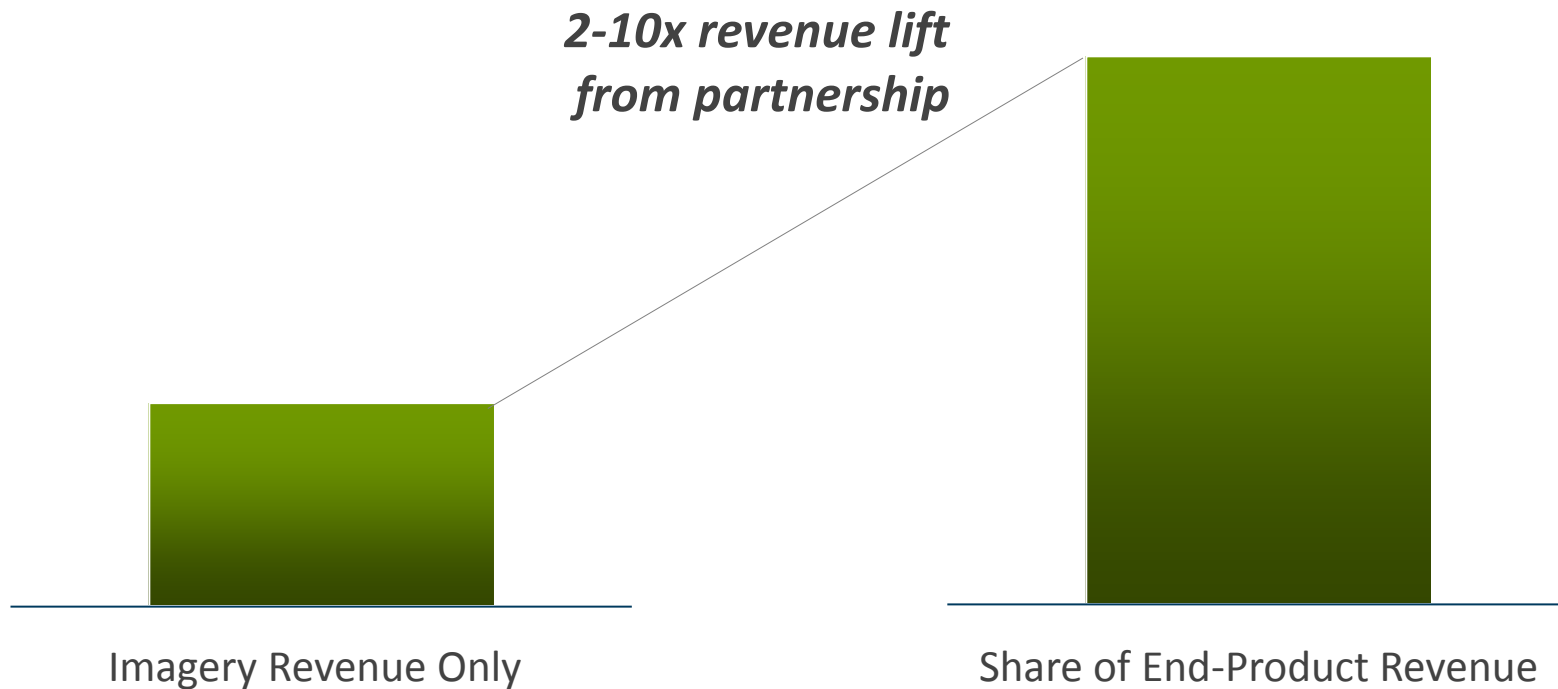


**“The constellation today is significantly more advanced than any other competitive system in the marketplace...
...transform the look of GIS the map of the future is not really a map but an intelligent, photorealistic, 3D image”**

Our Ecosystem Is Driving New Revenue

Historical Reseller Model

Partnership Model



Our Sales Strategy Will Drive Growth

- Significant investment in our sales leadership
- Go-to-market approach maximizes our reach
- Laser focus on quality and customer loyalty
- Pipeline provides confidence in growth outlook

Measuring Our Progress

Yancey Spruill
EVP, CFO



We Expect Growth in All of Our Industry Verticals

2013 % of Revenue	Customer Category	Long-Term Growth Relative to Total
57%	U.S. Government	In line
17%	International D&I (DAP)	Below
11%	International Civil	Above
8%	Location-Based Services	In line
7%	Industry Verticals	Above
100%	Total/Annualized Average	10%+

We Have Highly Recurring, Visible Revenue

Customer Category	Revenue Characteristic
U.S. Government	Subscription-like contracts with high renewal rates
International D&I (DAP)	Subscription-like contracts with high renewal rates
International Civil	Transactional with repeat customers
Location-Based Services	Subscription-like contracts with high renewal rates
Industry Verticals	Transactional with repeat customers

We Expect to Deliver Sustainable Growth that Creates Value for Investors

Targets for Key Metrics	Long-Term Annual Average
Revenue Growth	10%+
EBITDA Margin ^(a)	50%+
Free Cash Flow Margin ^(a)	20%+

(a) Post Integration

Note: EBITDA margin and free cash flow margin are non-GAAP metrics

We Will Be Disciplined About Deploying Cash

- Opportunity to grow business – M&A and organic
- Investing for returns at 15%+
- Expect to provide more detail on capital structure strategy after WorldView-3 is operational in 2H-14

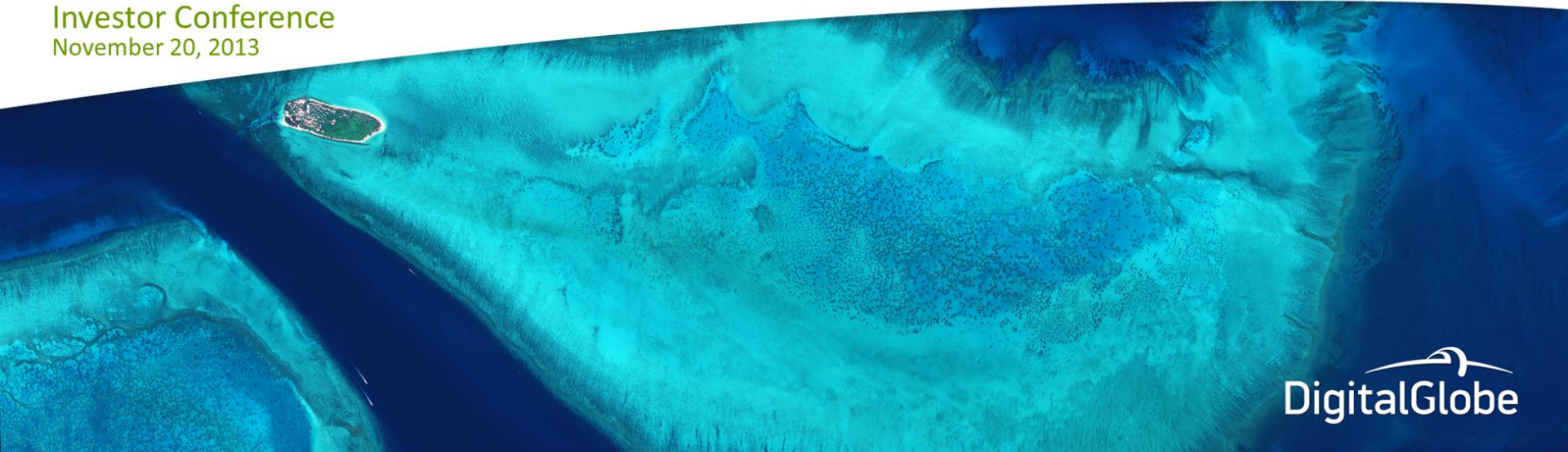
We Have a Strong Investment Thesis

- High growth
- High recurring revenue
- High EBITDA margin
- High conversion of EBITDA to free cash flow
- Strong balance sheet

Note: EBITDA margin, EBITDA, and free cash flow are non-GAAP metrics

Delivering Sustainable Growth and Shareowner Value Creation

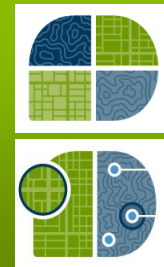
Investor Conference
November 20, 2013



Our Strategy Will Drive Profitable Growth

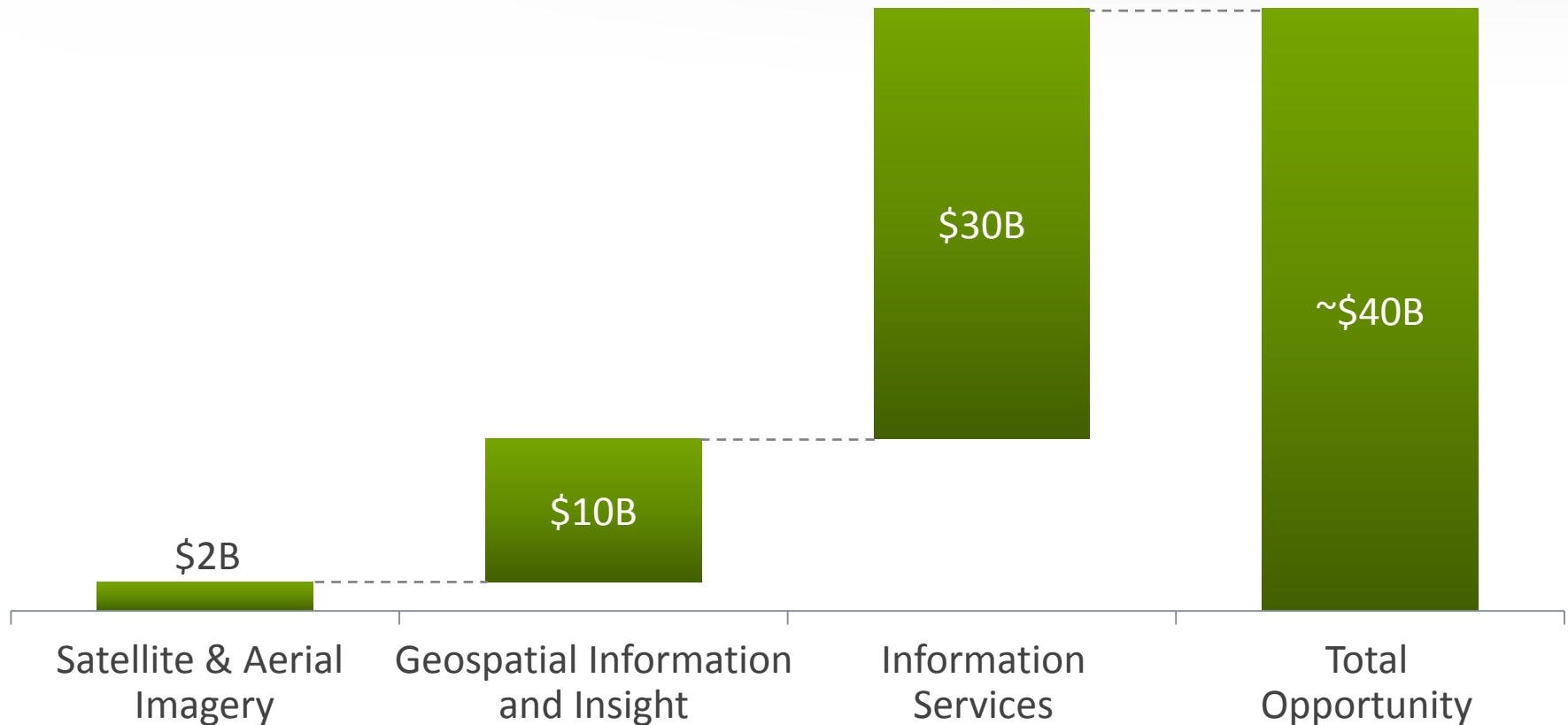


Grow Our Core
Satellite Imagery
Business



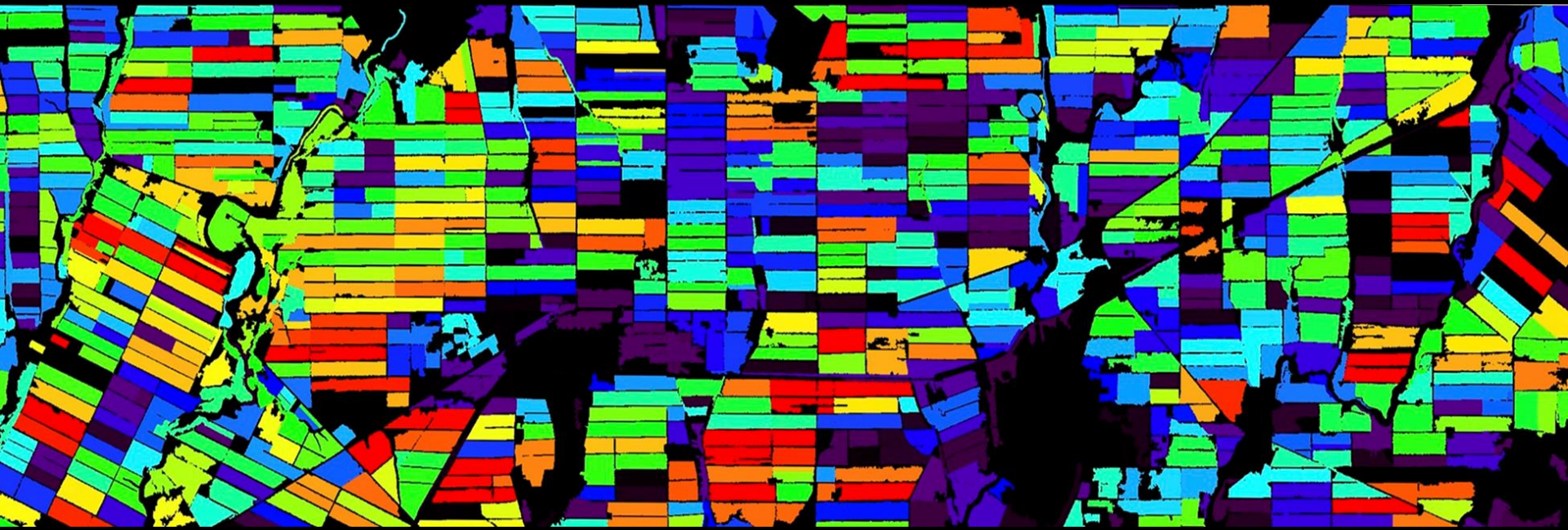
Grow Emerging
Information and Insight
Businesses

This Evolution Accesses a ~\$40B Opportunity

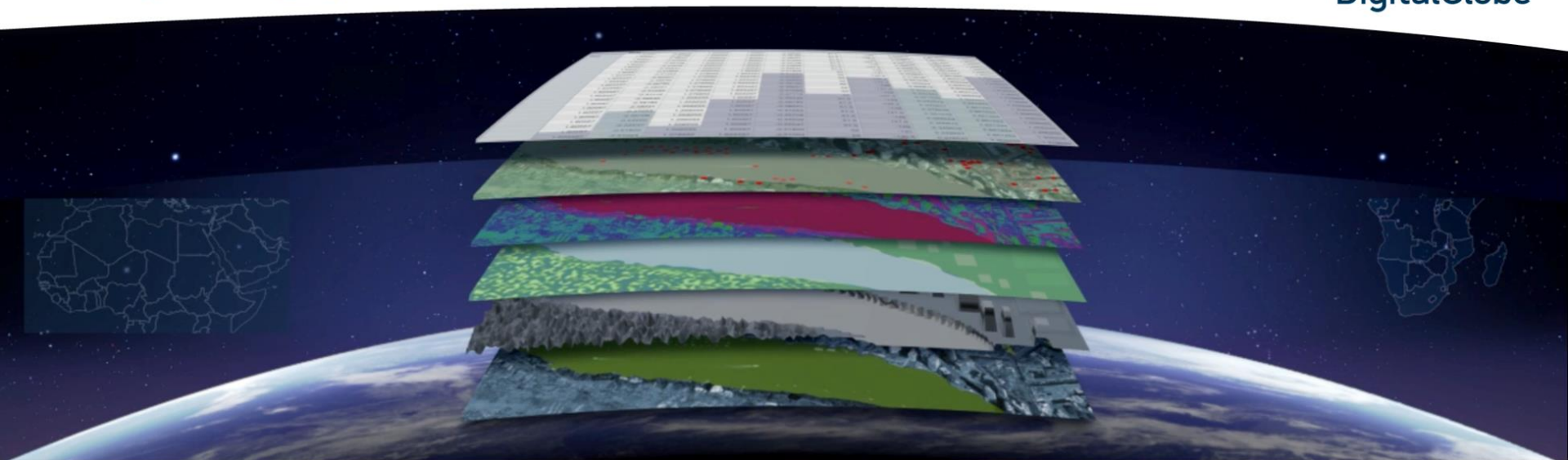


Sources: Outsell, Euroconsult, DigitalGlobe estimates (2013)



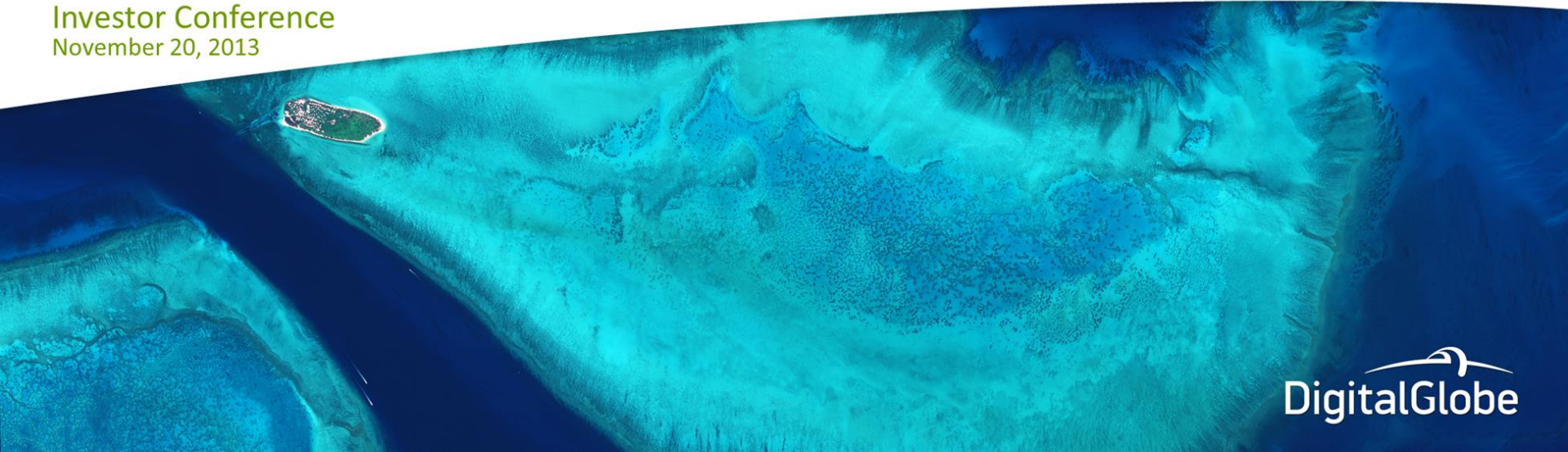


Creating the Living Digital Inventory of the Surface of the Earth



Delivering Sustainable Growth and Shareowner Value Creation

Investor Conference
November 20, 2013



Appendix

Our 12-Month Backlog is Up 41% to \$516 Million

<i>(\$ in millions)</i>	September 30, 2013 Next 12 Months	September 30, 2012 Next 12 Months	Year-over-year Growth
<u>U.S. Government</u>			
EnhancedView SLA	\$ 236.3	\$ 227.2	4.0%
NextView Amortization	25.5	25.5	--
Other Revenue and Value Added Services	96.8	5.7	1,598.2%
Total U.S. Government	\$358.6	\$258.4	38.8%
<u>Diversified Commercial</u>			
DAP	\$ 62.3	\$ 47.9	30.1%
Other Diversified Commercial	94.9	59.9	58.4%
Total Diversified Commercial	\$157.2	\$107.8	45.8 %
Total Backlog	\$515.8	\$366.2	40.9%

Organic and Pro Forma Revenue⁽¹⁾

(\$ in millions)

Revenue	3Q- 2013	3Q-2012	YoY Growth
DigitalGlobe Reported Standalone Revenue	\$ 133.9	\$ 107.2	25 %
<u>GeoEye Reported Standalone Revenue⁽²⁾</u>	<u>30.9</u>	<u>87.1</u>	(65) %
Total Revenue	\$ 164.8	\$ 194.3	
Adjustments			
GeoEye EnhancedView SLA Revenue	--	\$ (37.5)	--
<u>GeoEye Amortized Revenue from NextView</u>	<u>--</u>	<u>(6.0)</u>	<u>--</u>
Resulting GeoEye Revenue		\$ (43.5)	
Organic Revenue			
DigitalGlobe Organic Revenue	\$ 133.9	\$ 107.2	25 %
<u>GeoEye Organic Revenue⁽²⁾</u>	<u>30.9</u>	<u>43.6</u>	<u>(29) %</u>
Total Revenue	\$ 164.8	\$ 150.8⁽³⁾	9 %

(1) This chart is provided to help illustrate the growth of DigitalGlobe revenue (without giving effect to the GeoEye acquisition) and of the estimated revenue contribution from GeoEye. Total revenue and GeoEye revenue amounts are presented on a pro forma basis assuming the acquisition of GeoEye was completed prior to June 30, 2012. The chart also presents pro forma adjustments to give effect to the impact of the loss of GeoEye revenue related to the Service Level Agreement (SLA) and the NGA and the amortized revenue related to the NextView agreement with NGA.

(2) 3Q-13 estimated revenue attributable to acquisition of GeoEye.

(3) Represents total company revenue on a pro forma basis assuming the acquisition of GeoEye was completed prior to June 30, 2012 and after pro forma adjustments to give effect to the impact of the loss of the GeoEye SLA and Amortized NextView revenue.

Quarterly Adjusted EBITDA⁽¹⁾ Reconciliation

(\$ in millions)	2013		
	1Q	2Q	3Q
Net Income (loss)	\$ (60.6)	\$ (21.0)	\$ (1.8)
Depreciation & Amortization	47.3	59.0	59.4
Interest income (expense), net	1.4	1.4	0.7
Income tax (benefit) expense	(19.0)	(14.1)	(3.8)
EBITDA	\$ (30.9)	\$ 25.3	\$ 54.5
EBITDA margin	(24.2)%	16.8%	33.1%
Loss from early extinguishment of debt	17.8	--	--
Combination-related expenses ⁽²⁾	49.0	20.6	11.1
Adjusted EBITDA⁽³⁾	\$ 35.9	\$45.9	\$ 65.6
Adjusted EBITDA margin⁽³⁾	28.1%	30.5%	39.8%
Revenue	\$ 127.6	\$150.6	\$ 164.8

(1) DigitalGlobe has not reconciled its Adjusted EBITDA or Adjusted EBITDA Margin outlook to the comparable forward-looking GAAP financial measures, net income(loss), because it is unable to provide a forward-looking estimate of the reconciling items between net earnings and Adjusted EBITDA, which include depreciation and amortization, interest income (expense), net, income tax (benefit) expense and combination-related expenses. Certain factors that are materially significant to DigitalGlobe's ability to estimate these items are out of the Company's control and/or cannot be reasonably predicted. Accordingly, a reconciliation to net income(loss) is not available without unreasonable effort.

(2) In 1Q-13 and 2Q-13, acquisition costs were \$20.8 million and \$(0.2) million, respectively. In 1Q-13, 2Q-13 and 3Q-13, restructuring and integration costs were \$28.2 million, \$20.8 million and \$11.1 million, respectively.

(3) Adjusted EBITDA and Adjusted EBITDA margin are non-GAAP metrics. Adjusted EBITDA margin is calculated by dividing Adjusted EBITDA by GAAP revenue.

Free Cash Flow Reconciliation

(\$ in millions)	March 31 2013	June 30 2013	September 30 2013	YTD 2013
Operating Cash Flow	\$ (27.4)	\$ 29.0	\$ 74.3	\$ 75.9
Investing Cash Flow	(593.5)	(71.8)	(65.6)	(730.9)
<u>Net investment for GeoEye</u>	<u>524.0</u>	<u>--</u>	<u>--</u>	<u>524.0</u>
Free Cash Flow ⁽¹⁾	\$ (96.9)	\$ (42.8)	\$ 8.7	\$ (131.0)

(\$ in millions)	March 31 2012	June 30 2012	September 30 2012	December 31 2012	FY-2012
Operating Cash Flow	\$68.5	\$47.3	\$74.3	\$74.4	\$264.5
<u>Investing Cash Flow</u>	<u>(56.0)</u>	<u>(43.4)</u>	<u>(54.6)</u>	<u>(62.0)</u>	<u>(216.0)</u>
Free Cash Flow ⁽¹⁾	\$12.5	\$3.9	\$19.7	\$12.4	\$48.5

(1) Free cash flow is a non-GAAP metric.

Delivering Sustainable Growth and Shareowner Value Creation

Investor Conference
November 20, 2013

