



Corporate Profile

For 85 years, Raytheon has been a leader in developing innovative technologies. From radio tubes of the 1920s and microwave technology of the 1940s, to present day systems for defense, homeland security and other government markets throughout the world, Raytheon has successfully built upon a pioneering tradition to become a global technology leader.

Today Raytheon provides innovative solutions to customers in 80 nations. With 2006 sales of \$20.3 billion, we are one of the world's largest defense contractors,

serving all branches of the United States military and other U.S. government agencies, the North Atlantic Treaty Organization (NATO), and many allied governments on every continent.

Through strategic vision, disciplined management and the talents of 73,000 dedicated employees, Raytheon is delivering operational advantages for customers every day, while helping them prepare for the missions of tomorrow.

Raytheon Businesses

Raytheon's businesses deliver world-class products, systems and support for our customers and partners. The company is comprised of six businesses:



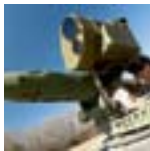
Integrated Defense Systems, headquartered in Tewksbury, Mass., is a leader in Mission Systems Integration, providing integrated air defense, maritime and joint battlespace solutions.



Intelligence and Information Systems, headquartered in Garland, Texas, provides U.S. government and international customers with innovative information solutions for modern intelligence, surveillance and reconnaissance technologies that support defense and homeland security missions.



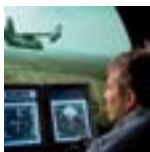
Missile Systems, headquartered in Tucson, Ariz., is a leading missile manufacturer, developing and supporting a broad range of cutting-edge solutions for the armed forces of the U.S. and allied nations.



Network Centric Systems, headquartered in McKinney, Texas, develops and produces network-centric mission solutions for networked sensors, command and control, communications, air traffic management and homeland security.



Space and Airborne Systems, headquartered in El Segundo, Calif., is a world leader in space and aviation sensing technology for radar and electro-optical infrared systems and a provider of integrated solutions for domestic and international customers.



Technical Services, headquartered in Reston, Va., provides technology solutions for defense, government and commercial customers worldwide, specializing in Mission Support, customized engineering and manufacturing services, and base and range operations.

Raytheon Core Markets

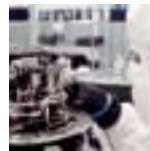
Our domain knowledge and technological leadership have created expanding opportunities in four core defense markets:



Sensing: Technologies that acquire data and create the information needed for effective battlespace decisions. At Raytheon, sensing technologies span the full electromagnetic spectrum to provide a broad range of capabilities, including traditional radio frequency and electro-optical sensors, as well as hyperspectral, acoustic and ultraviolet sensors.



C3I (Command, Control, Communications and Intelligence): Integrated systems that optimize operational planning and execution. Raytheon's C3I capabilities are extensive and continue to expand. They include situational awareness, surveillance, intelligence and analysis, communications, mission planning, battle management command and control, sensors and payloads, and integrated ground solutions.



Effects: Technologies that achieve specific actions or outcomes. Raytheon capabilities span the gamut of current and emerging effects technologies. Our technologies range from using missiles as a node on a network to directed-energy urban warfare and other lethal and nonlethal systems and applications.



Mission Support: Total life-cycle solutions that ensure NoDoubt™ performance. Raytheon Mission Support services provide integrated, customized solutions that span the entire mission life cycle — including not only the full breadth of Raytheon technologies, but also third-party and next-generation readiness support.