



CNH Global N.V.

Summary North American Retail Unit Sales Activity
For Selected Agricultural and Construction Equipment,
During the Month of February and Cumulative for 2 Months, 2004,
And Indicators of North American Dealer Inventory Levels for Selected Agricultural
Equipment at the End of January 2004
Relative to Industry Results or Levels, Compared with Prior Year Periods

The following table summarizes selected agricultural and construction equipment industry retail unit sales results in North America as compared with prior year periods. Industry results for the current periods are expressed as a percentage change from the prior year periods, by major product category. The percentage change reflects only industry retail unit sales results and is derived from flash, or preliminary actual, data of the U.S. Association of Equipment Manufacturers ('AEM') and of the Canadian Farm and Industrial Equipment Institute ('CFIEI').

These industry data are based on unit sales as preliminarily reported by AEM and CFIEI member companies and include most, but not all, of the equipment sold in each of the categories. The data are subject to revision from time to time and caution should be maintained when using the data for any purpose. Actual results will vary and may not be known for some time. Over time, industry results will be adjusted to reflect actual sales differences, reclassifications, or other factors. Retail unit sales will fluctuate from month to month due to several factors, including timing of new products and new product introductions, product availability, and sales programs. CNH Global N.V.'s performance for the same periods is described relative to the change in industry results.

Also included in the table are indicators of North American dealer inventory levels. Industry data are derived from the flash, or preliminary actual, data of the AEM and CFIEI and expressed as the number of months of inventory on hand, based on the simple average of the previous 12 months retail unit sales results. CNH Global N.V.'s dealer's inventory levels for the same periods are described relative to the industry levels.

This information reflects point-in-time data that is not necessarily representative of either the market nor of CNH Global N.V.'s relative performance going forward, nor does it reflect or imply any forward-looking information regarding the market or CNH Global N.V.'s relative performance in that market.

Copies of the relevant Agricultural Flash report from AEM and CFIEI follow the table.

SUMMARY OF NORTH AMERICAN RETAIL ACTIVITY		
CATEGORY	Total North American INDUSTRY	CNH RELATIVE PERFORMANCE (All Brands)
RETAIL UNIT SALES: MONTH OF FEB. 2004		
Agricultural Tractors:		
under 40 horsepower (2WD)	27.1%	up high single digits
40 to 100 horsepower (2WD)	16.7%	up moderate double digits, moderately more than the industry
over 100 horsepower (2WD)	(2.7)%	down high single digits
4 wheel drive tractors	24.6%	up high double digits, significantly more than the industry
Sub total tractors over 40 hp	11.4%	up low double digits, moderately more than the industry
Total Ag tractors	19.5%	up low double digits, slightly less than the industry
Combines	(30.7)%	down high double digits, moderately more than the industry
Loader/backhoes	up significantly	up low double digits, moderately less than the industry
Skid Steer Loaders	up moderately	equal to the industry
Total Heavy Construction Equipment	up significantly	up moderate double digits, moderately less than the industry
RETAIL UNIT SALES: 2 MONTH, 2004		
Agricultural Tractors:		
under 40 horsepower (2WD)	21.2%	down low single digits
40 to 100 horsepower (2WD)	22.8%	up moderate double digits, in line with the industry
over 100 horsepower (2WD)	30.3%	down low double digits
4 wheel drive tractors	22.1%	up high double digits, significantly more than the industry
Sub total tractors over 40 hp	24.8%	up low double digits, moderately less than the industry
Total Ag tractors	23.0%	up mid single digits
Combines	6.5%	down low double digits
Loader/backhoes	up significantly	up high single digits
Skid Steer Loaders	up moderately	up low double digits, slightly less than the industry
Total Heavy Construction Equipment	up significantly	up high single digits
DEALER INVENTORIES: END OF January 2004		
Agricultural Tractors:		
under 40 horsepower (2WD)	4.9 months supply	1/2 month less than the industry
40 to 100 horsepower (2WD)	4.7 months supply	in line with the industry
over 100 horsepower (2WD)	4.7 months supply	in line with the industry
4 wheel drive tractors	3.2 months supply	1 month less than the industry
Total tractors	4.8 months supply	1/2 month less than the industry
Combines	2.9 months supply	1 month more than the industry



Home

Member Login

Request Login

About Us

AEM Offices

What's New

News & Information

Calendar

Industry Trends

Sparks Daily Ag Report
U.S. Ag Flash Report

Canadian Ag Flash Report
State of Ag Industry Report
Quarterly Trends Reports
Construction Equipment Index
Industry Resources
Economic Trends & Reports
Rental Resources
Surveys

Technical

Safety & Training

Statistics

Government Affairs

Education

Trade Shows

International Services

Councils, Bureaus,
& Committees

AEM Store

Workforce Development

Links & Directories

Industry Trends

U.S. Ag Flash Reports

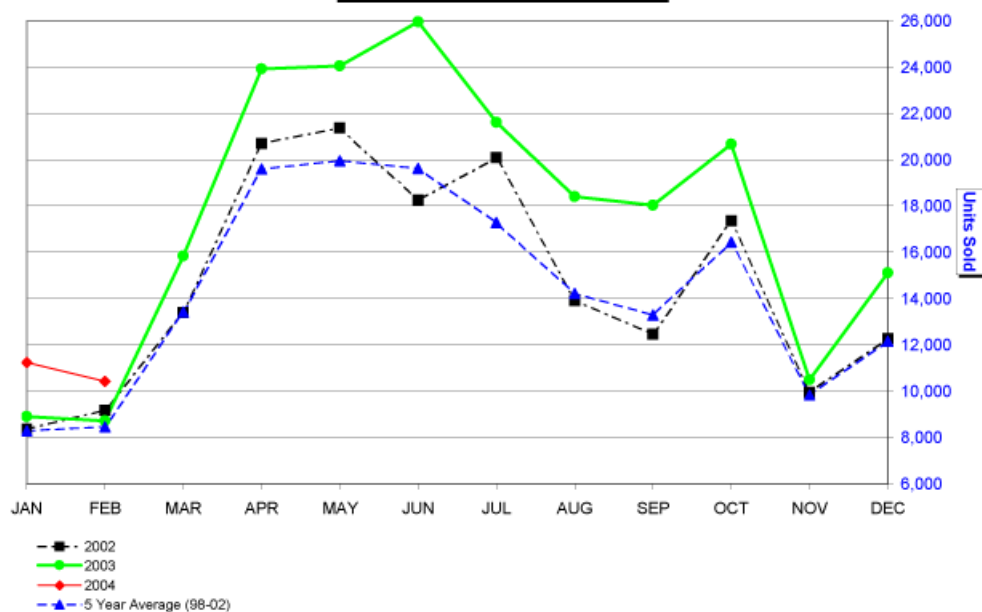
February 2004 Flash Report

U.S. Unit Retail Sales

(Report released 3/11/2004)

Equipment	Feb. 2004	Feb. 2003	% Chg.	Y-T-D 2004	Y-T-D 2003	% Chg.	Jan. 2004 U.S. Field Inventory
Farm Wheel Tractors - 2 Wheel Drive							
Under 40 HP	5,783	4,567	26.6	10,551	8,675	21.6	51,737
40 & Under 100 HP	3,224	2,739	17.7	7,033	5,600	25.6	24,339
100 HP & Over	1,117	1,070	4.4	2,915	1,975	47.6	5,789
Total - 2 Wheel Drive	10,124	8,376	20.9	20,499	16,250	26.1	81,865
Total - 4 Wheel Drive	175	144	21.5	399	330	20.9	772
Total Farm Wheel Tractors	10,299	8,520	20.9	20,898	16,580	26.0	82,637
Combines (Self-Propelled)	130	206	-36.9	383	382	.3	1,071

**U.S. Unit Retail Sales
2-4 WD Tractors & Combines**



111 East Wisconsin Avenue Milwaukee, WI 53202-4806
 414-298-4146 414 272-2464/FAX
 Web Site: www.aem.org E-mail: dcarson@aem.org

These data are, in part, estimates that are subject to revisions when final detail data become available. Because of the seasonal nature of the industry, comparisons of monthly data from one period to another should be done with extreme caution. These data represent most, but not all, of the manufacturers in each product category being sold at retail in the

fifty states and the District of Columbia.

Ag Flash Report is updated by the 15th of the month.

For further information, please contact Deb Carson at 414-298-4146.

[To U.S. Ag Flash Report Archive >>](#)

© AEM 2004 -- Association of Equipment Manufacturers
Toll Free: 866-AEM-0442
Click [here](#) to read our Legal and Privacy Information
[Contact Us](#)

[Headquarters Office](#)
111 E. Wisconsin Ave. Suite 1000
Milwaukee, WI 53202-4806
Phone: 414-272-0943 Fax: 414-272-1170



[HOME](#) > [INDUSTRY TRENDS](#) > CANADIAN AG FLASH REPORTS >

[Home](#)

[Industry Trends](#)

Canadian Ag Flash Reports

[Member Login](#)

[Request Login](#)

[About Us](#)

[AEM Offices](#)

[What's New](#)

[News & Information](#)

[Calendar](#)

[Industry Trends](#)

[Sparks Daily Ag Report](#)
[U.S. Ag Flash Report](#)
[Canadian Ag Flash Report](#) 
[State of Ag Industry Report](#)
[Quarterly Trends Reports](#)
[Construction Equipment Index](#)
[Industry Resources](#)
[Economic Trends & Reports](#)
[Rental Resources](#)
[Surveys](#)

[Technical](#)

[Safety & Training](#)

[Statistics](#)

[Government Affairs](#)

[Education](#)

[Trade Shows](#)

[International Services](#)

[Councils, Bureaus,
& Committees](#)

[AEM Store](#)

[Workforce Development](#)

[Links & Directories](#)

February 2004 Flash Report Canada Unit Retail Sales

(Report released 3/11/2004)

These data are, in part, estimates that are subject to revisions when final detail data become available. Because of the seasonal nature of the industry, comparisons of monthly data from one period to another should be done with extreme caution. These data represent most, but not all, of the manufacturers in each product category being sold at retail in the Provinces of Canada.

	February			February YTD			January	
Equipment	2004	2003	% Chg.	2004	2003	% Chg.	2004 Canadian (Field) Inventory	2003 Canadian (Field) Inventory
Farm Wheel Tractors - 2 Wheel Drive								
Under 40 HP	246	176	39.8	454	402	12.9	2,540	3,042
40 & Under 100 HP	276	260	6.2	587	605	-3.0	2,417	2,777
100 HP & Over	137	219	-37.4	269	469	-42.6	1,510	1,496
Total - 2 Wheel Drive	659	655	.6	1,310	1,476	-11.2	6,467	7,315
Total - 4 Wheel Drive	43	31	38.7	77	60	28.3	181	208
Total Farm Wheel Tractors	702	686	2.3	1,387	1,536	-9.7	6,648	7,523
Combines (Self-Propelled)	28	22	27.3	78	51	52.9	352	275

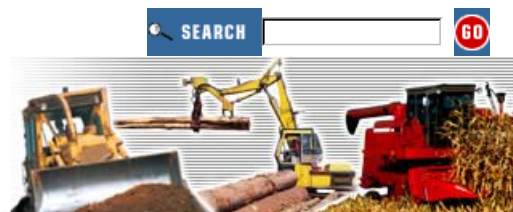
[Go To Canadian Ag Flash Reports Archive >>](#)

© AEM 2004 -- Association of Equipment Manufacturers
Toll Free: 866-AEM-0442

Click [here](#) to read our Legal and Privacy Information
[Contact Us](#)

[Headquarters Office](#)

111 E. Wisconsin Ave. Suite 1000
Milwaukee, WI 53202-4806
Phone: 414-272-0943 Fax: 414-272-1170



Home

Member Login

Request Login

About Us

AEM Offices

What's New

News & Information

Calendar

Industry Trends

Sparks Daily Ag Report
U.S. Ag Flash Report

Canadian Ag Flash Report
State of Ag Industry Report
Quarterly Trends Reports
Construction Equipment Index
Industry Resources
Economic Trends & Reports
Rental Resources
Surveys

Technical

Safety & Training

Statistics

Government Affairs

Education

Trade Shows

International Services

Councils, Bureaus,
& Committees

AEM Store

Workforce Development

Links & Directories

Industry Trends

U.S. Ag Flash Reports

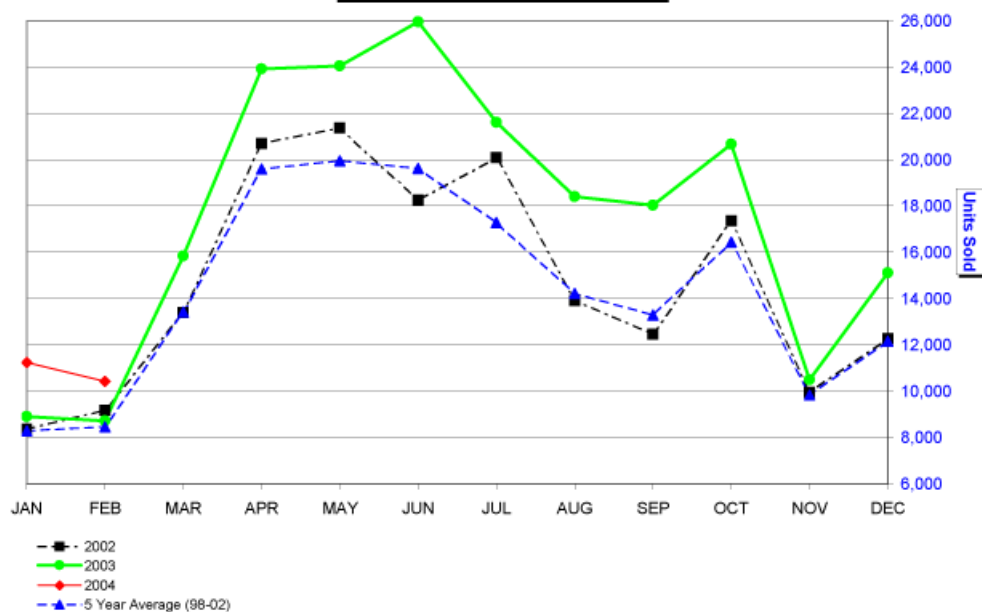
February 2004 Flash Report

U.S. Unit Retail Sales

(Report released 3/11/2004)

Equipment	Feb. 2004	Feb. 2003	% Chg.	Y-T-D 2004	Y-T-D 2003	% Chg.	Jan. 2004 U.S. Field Inventory
Farm Wheel Tractors - 2 Wheel Drive							
Under 40 HP	5,783	4,567	26.6	10,551	8,675	21.6	51,737
40 & Under 100 HP	3,224	2,739	17.7	7,033	5,600	25.6	24,339
100 HP & Over	1,117	1,070	4.4	2,915	1,975	47.6	5,789
Total - 2 Wheel Drive	10,124	8,376	20.9	20,499	16,250	26.1	81,865
Total - 4 Wheel Drive	175	144	21.5	399	330	20.9	772
Total Farm Wheel Tractors	10,299	8,520	20.9	20,898	16,580	26.0	82,637
Combines (Self-Propelled)	130	206	-36.9	383	382	.3	1,071

**U.S. Unit Retail Sales
2-4 WD Tractors & Combines**



111 East Wisconsin Avenue Milwaukee, WI 53202-4806
 414-298-4146 414 272-2464/FAX
 Web Site: www.aem.org E-mail: dcarson@aem.org

These data are, in part, estimates that are subject to revisions when final detail data become available. Because of the seasonal nature of the industry, comparisons of monthly data from one period to another should be done with extreme caution. These data represent most, but not all, of the manufacturers in each product category being sold at retail in the

fifty states and the District of Columbia.

Ag Flash Report is updated by the 15th of the month.

For further information, please contact Deb Carson at 414-298-4146.

[To U.S. Ag Flash Report Archive >>](#)

© AEM 2004 -- Association of Equipment Manufacturers
Toll Free: 866-AEM-0442
Click [here](#) to read our Legal and Privacy Information
[Contact Us](#)

[Headquarters Office](#)
111 E. Wisconsin Ave. Suite 1000
Milwaukee, WI 53202-4806
Phone: 414-272-0943 Fax: 414-272-1170

[Home](#)[Member Login](#)[Request Login](#)[About Us](#)[AEM Offices](#)[What's New](#)[News & Information](#)[Calendar](#)[Industry Trends](#)

[Sparks Daily Ag Report](#)
[U.S. Ag Flash Report](#)
[Canadian Ag Flash Report](#)
[State of Ag Industry Report](#)
[Quarterly Trends Reports](#)
[Construction Equipment Index](#)
[Industry Resources](#)
[Economic Trends & Reports](#)
[Rental Resources](#)
[Surveys](#)

[Technical](#)[Safety & Training](#)[Statistics](#)[Government Affairs](#)[Education](#)[Trade Shows](#)[International Services](#)[Councils, Bureaus,
& Committees](#)[AEM Store](#)[Workforce Development](#)[Links & Directories](#)[Industry Trends](#)

Canadian Ag Flash Reports

February 2004 Flash Report Canada Unit Retail Sales

(Report released 3/11/2004)

These data are, in part, estimates that are subject to revisions when final detail data become available. Because of the seasonal nature of the industry, comparisons of monthly data from one period to another should be done with extreme caution. These data represent most, but not all, of the manufacturers in each product category being sold at retail in the Provinces of Canada.

	February			February YTD			January	
Equipment	2004	2003	% Chg.	2004	2003	% Chg.	2004 Canadian (Field) Inventory	2003 Canadian (Field) Inventory
Farm Wheel Tractors - 2 Wheel Drive								
Under 40 HP	246	176	39.8	454	402	12.9	2,540	3,042
40 & Under 100 HP	276	260	6.2	587	605	-3.0	2,417	2,777
100 HP & Over	137	219	-37.4	269	469	-42.6	1,510	1,496
Total - 2 Wheel Drive	659	655	.6	1,310	1,476	-11.2	6,467	7,315
Total - 4 Wheel Drive	43	31	38.7	77	60	28.3	181	208
Total Farm Wheel Tractors	702	686	2.3	1,387	1,536	-9.7	6,648	7,523
Combines (Self-Propelled)	28	22	27.3	78	51	52.9	352	275

[Go To Canadian Ag Flash Reports Archive >>](#)

© AEM 2004 -- Association of Equipment Manufacturers
Toll Free: 866-AEM-0442

Click [here](#) to read our Legal and Privacy Information
[Contact Us](#)

[Headquarters Office](#)

111 E. Wisconsin Ave. Suite 1000
Milwaukee, WI 53202-4806
Phone: 414-272-0943 Fax: 414-272-1170