



CNH Global N.V.

Summary North American Retail Unit Sales Activity
For Selected Agricultural and Construction Equipment
During the Month of January and Cumulative for 1 Month 2006,
and Indicators of North American Dealer Inventory Levels for Selected Agricultural
Equipment at the End of December 2005
Relative to Industry Results or Levels, Compared with Prior Year Periods

The following table summarizes selected agricultural and construction equipment industry retail unit sales results in North America as compared with prior year periods. Industry results for the current periods are expressed as a percentage change from the prior year periods, by major product category. The percentage change reflects only industry retail unit sales results and is derived from flash, or preliminary actual, data of the U.S. Association of Equipment Manufacturers ('AEM') and of the Canadian Farm and Industrial Equipment Institute ('CFIEI').

These industry data are based on unit sales as preliminarily reported by AEM and CFIEI member companies and include most, but not all, of the equipment sold in each of the categories. The data are subject to revision from time to time and caution should be maintained when using the data for any purpose. Actual results will vary and may not be known for some time. Over time, industry results will be adjusted to reflect actual sales differences, reclassifications, or other factors. Retail unit sales will fluctuate from month to month due to several factors, including timing of new products and new product introductions, product availability, and sales programs. CNH Global N.V.'s performance for the same periods is described relative to the change in industry results.

Also included in the table are indicators of North American dealer inventory levels. Industry data are derived from the flash, or preliminary actual, data of the AEM and CFIEI and expressed as the number of months of inventory on hand, based on the simple average of the previous 12 months retail unit sales results. CNH Global N.V.'s dealer's inventory levels for the same periods are described relative to the industry levels.

This information reflects point-in-time data that is not necessarily representative of either the market or of CNH Global N.V.'s relative performance going forward, nor does it reflect or imply any forward-looking information regarding the market or CNH Global N.V.'s relative performance in that market.

Copies of the relevant monthly Agricultural Flash reports from AEM and CFIEI follow the table.

SUMMARY OF NORTH AMERICAN RETAIL ACTIVITY		
CATEGORY	Total North American Industry	CNH RELATIVE PERFORMANCE (All Brands)
RETAIL UNIT SALES: MONTH of JANUARY 2006		
Agricultural Tractors: under 40 horsepower (2WD)	(0.9)%	up low double digits
40 to 100 horsepower (2WD)	+3.6%	up low double digits
over 100 horsepower (2WD)	(17.5)%	down moderate double digits
4 wheel drive tractors	(14.0)%	down high double digits
Sub total tractors over 40 hp	(3.5)%	down low single digits, equal to the industry
Total Ag tractors	(2.4)%	up low single digits
Combines	(11.0)%	down low double digits, slightly worse than the industry
Loader/backhoes	up low double digits	up moderate double digits, moderately better than the industry
Skid Steer Loaders	up mid single digits	flat
Total Heavy Construction Equipment	up moderate double digits	up moderate double digits, moderately less than the industry
RETAIL UNIT SALES: 1 MONTHS, 2006		
Agricultural Tractors: under 40 horsepower (2WD)	(0.9)%	up low double digits
40 to 100 horsepower (2WD)	+3.6%	up low double digits
over 100 horsepower (2WD)	(17.5)%	down moderate double digits
4 wheel drive tractors	(14.0)%	down high double digits
Sub total tractors over 40 hp	(3.5)%	down low single digits, equal to the industry
Total Ag tractors	(2.4)%	up low single digits
Combines	(11.0)%	down low double digits, slightly worse than the industry
Loader/backhoes	up low double digits	up moderate double digits, moderately better than the industry
Skid Steer Loaders	up mid single digits	flat
Total Heavy Construction Equipment	up moderate double digits	up moderate double digits, moderately less than the industry
DEALER INVENTORIES: END OF DECEMBER 2005		
Agricultural Tractors: under 40 horsepower (2WD)	5.4 months supply	1 month higher than the industry
40 to 100 horsepower (2WD)	4.8 months supply	1 month higher than the industry
over 100 horsepower (2WD)	4.0 months supply	in line with the industry
4 wheel drive tractors	3.0 months supply	1 month lower than the industry
Total tractors	5.0 months supply	½ month higher than the industry
Combines	2.3 months supply	> 1 month higher than the industry


[HOME](#) > [INDUSTRY TRENDS](#) > U.S. AG FLASH REPORTS >

 [GO](#)
[Member Login](#)
[About Us](#)
[AEM Offices](#)
[What's New](#)
[News & Information](#)
[Calendar](#)
[Industry Trends](#)

[InformaEcon Daily Ag Report](#)
[U.S. Ag Flash Report](#)
[Canadian Ag Flash Report](#)
[State of Ag Industry Report](#)
[Quarterly Trends Reports](#)
[Construction Equipment Index](#)
[Annual CE Business Outlook](#)
[Industry Resources](#)
[Economic Trends & Reports](#)
[Rental Resources](#)
[Surveys](#)

[Technical](#)
[Safety & Training](#)
[Statistics](#)
[Government Affairs](#)
[Global Public Policy](#)
[Education](#)
[Trade Shows](#)
[International Services](#)
[Councils, Bureaus,
& Committees](#)
[AEM Store](#)
[Links & Directories](#)

Industry Trends

U.S. Ag Flash Reports

January 2006 Flash Report

U.S. Unit Retail Sales

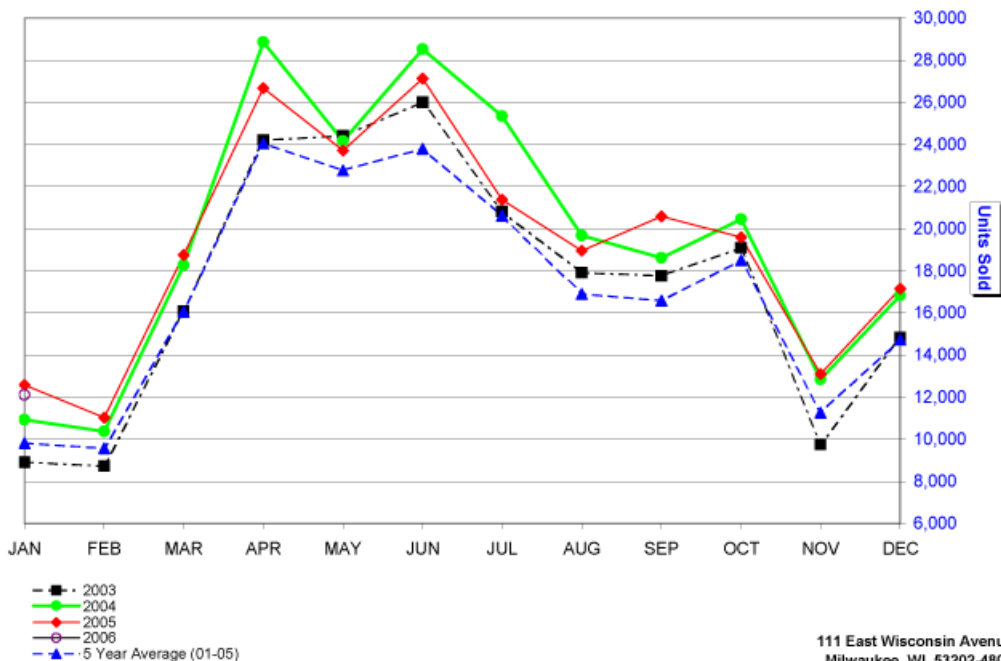
(Report released 2/14/2006)

To download a PDF of this report, please [click here](#).

Equipment	January 2006	January 2005	% Chg.	Y-T-D 2006	Y-T-D 2005	% Chg.	December 2005 U.S. Field Inventory
Farm Wheel Tractors - 2 Wheel Drive							
Under 40 HP	5,238	5,325	-1.6	5,238	5,325	-1.6	56,958
40 & Under 100 HP	4,613	4,528	1.9	4,613	4,528	1.9	30,102
100 HP & Over	1,698	2,103	-19.3	1,698	2,103	-19.3	6,529
Total - 2 Wheel Drive	11,549	11,956	-3.4	11,549	11,956	-3.4	93,589
Total - 4 Wheel Drive	222	266	-16.5	222	266	-16.5	870
Total Farm Wheel Tractors	11,771	12,222	-3.7	11,771	12,222	-3.7	94,459
Combines (Self-Propelled)	336	355	-5.4	336	355	-5.4	1,209

Association of
Equipment Manufacturers

**U.S. Unit Retail Sales
2-4 WD Tractors & Combines**



111 East Wisconsin Avenue
Milwaukee, WI 53202-4806
(414) 298-4146 (414) 272-2464/FAX
Web Site: www.aem.org
E-mail: dcarson@aem.org

These data are, in part, estimates that are subject to revisions when final detail data become available. Because of the seasonal nature of the industry, comparisons of monthly data from one period to another should be done with extreme caution. These data represent most, but not all, of the manufacturers in each product category being sold at retail in the fifty states and the District of Columbia.

Ag Flash Report is updated by the 15th of the month.

Interested in subscribing to market data reports? [Click here](#). For further information, please contact Deb Carson at 414-298-4146.

[To U.S. Ag Flash Report Archive >>](#)

© AEM 2006 -- Association of Equipment Manufacturers
Toll Free: 866-AEM-0442
Click [here](#) to read our Legal and Privacy Information
[Contact Us](#)

[Headquarters Office](#)
6737 W. Washington Street, Suite 2400
Milwaukee, WI 53214-5647
Phone: 414-272-0943 Fax: 414-272-1170



[HOME](#) > [INDUSTRY TRENDS](#) > CANADIAN AG FLASH REPORTS >

Search Here

[Member Login](#)

[About Us](#)

[AEM Offices](#)

[What's New](#)

[News & Information](#)

[Calendar](#)

Industry Trends

[InformaEcon Daily Ag Report](#)
[U.S. Ag Flash Report](#)
[Canadian Ag Flash Report](#)
[State of Ag Industry Report](#)
[Quarterly Trends Reports](#)
[Construction Equipment Index](#)
[Annual CE Business Outlook](#)
[Industry Resources](#)
[Economic Trends & Reports](#)
[Rental Resources](#)
[Surveys](#)

[Technical](#)

[Safety & Training](#)

[Statistics](#)

[Government Affairs](#)

[Global Public Policy](#)

[Education](#)

[Trade Shows](#)

[International Services](#)

[Councils, Bureaus,
& Committees](#)

[AEM Store](#)

[Links & Directories](#)

Industry Trends

Canadian Ag Flash Reports

January 2006 Flash Report Canada Unit Retail Sales

(Report released 2/14/2006)

These data are, in part, estimates that are subject to revisions when final detail data become available. Because of the seasonal nature of the industry, comparisons of monthly data from one period to another should be done with extreme caution. These data represent most, but not all, of the manufacturers in each product category being sold at retail in the Provinces of Canada.

To download a PDF of this report, please [click here](#).

	January			January YTD			December	
Equipment	2006	2005	% Chg.	2006	2005	% Chg.	2005 Canadian (Field) Inventory	2004 Canadian (Field) Inventory
Farm Wheel Tractors - 2 Wheel Drive								
Under 40 HP	277	241	14.9	277	241	14.9	3,593	3,024
40 & Under 100 HP	391	302	29.5	391	302	29.5	2,574	2,274
100 HP & Over	158	147	7.5	158	147	7.5	1,424	1,450
Total - 2 Wheel Drive	826	690	19.7	826	690	19.7	7,591	6,748
Total - 4 Wheel Drive	29	26	11.5	29	26	11.5	185	184
Total Farm Wheel Tractors	855	716	19.4	855	716	19.4	7,776	6,932
Combines (Self-Propelled)	35	62	-43.5	35	62	-43.5	412	346

These data are, in part, estimates that are subject to revisions when final detail data become available. Because of the seasonal nature of the industry, comparisons of monthly data from one period to another should be done with extreme caution.

Ag Flash Report is updated by the 15th of the month.

Interested in subscribing to market data reports? [Click here](#). For further information, please contact Deb Carson at 414-298-4146.

[Go To Canadian Ag Flash Reports Archive >>](#)

© AEM 2006 -- Association of Equipment Manufacturers

Toll Free: 866-AEM-0442

Click [here](#) to read our Legal and Privacy Information

[Contact Us](#)

[Headquarters Office](#)

6737 W. Washington Street, Suite 2400

Milwaukee, WI 53214-5647

Phone: 414-272-0943 Fax: 414-272-1170