



CNH Global N.V.

Summary North American Retail Unit Sales Activity
For Selected Agricultural and Construction Equipment
During the Month of June and Cumulative for 6 Months 2006,
and Indicators of North American Dealer Inventory Levels for Selected Agricultural
Equipment at the End of May 2006
Relative to Industry Results or Levels, Compared with Prior Year Periods

The following table summarizes selected agricultural and construction equipment industry retail unit sales results in North America as compared with prior year periods. Industry results for the current periods are expressed as a percentage change from the prior year periods, by major product category. The percentage change reflects only industry retail unit sales results and is derived from flash, or preliminary actual, data of the U.S. Association of Equipment Manufacturers ('AEM') and of the Canadian Farm and Industrial Equipment Institute ('CFIEI').

These industry data are based on unit sales as preliminarily reported by AEM and CFIEI member companies and include most, but not all, of the equipment sold in each of the categories. The data are subject to revision from time to time and caution should be maintained when using the data for any purpose. Actual results will vary and may not be known for some time. Over time, industry results will be adjusted to reflect actual sales differences, reclassifications, or other factors. Retail unit sales will fluctuate from month to month due to several factors, including timing of new products and new product introductions, product availability, and sales programs. CNH Global N.V.'s performance for the same periods is described relative to the change in industry results.

Also included in the table are indicators of North American dealer inventory levels. Industry data are derived from the flash, or preliminary actual, data of the AEM and CFIEI and expressed as the number of months of inventory on hand, based on the simple average of the previous 12 months retail unit sales results. CNH Global N.V.'s dealer's inventory levels for the same periods are described relative to the industry levels.

This information reflects point-in-time data that is not necessarily representative of either the market or of CNH Global N.V.'s relative performance going forward, nor does it reflect or imply any forward-looking information regarding the market or CNH Global N.V.'s relative performance in that market.

Copies of the relevant monthly Agricultural Flash reports from AEM and CFIEI follow the table.

SUMMARY OF NORTH AMERICAN RETAIL ACTIVITY		
CATEGORY	Total North American Industry	CNH RELATIVE PERFORMANCE (All Brands)
RETAIL UNIT SALES: MONTH of JUNE 2006		
Agricultural Tractors:		
under 40 horsepower (2WD)	(12.3)%	down low double digits, moderately worse than the industry
40 to 100 horsepower (2WD)	(1.0)%	up mid single digits
over 100 horsepower (2WD)	(22.6)%	down low double digits, moderately better than the industry
4 wheel drive tractors	(9.7)%	up low double digits
Sub total tractors over 40 hp	(5.0)%	flat
Total Ag tractors	(9.4)%	down high single digits, equal to the industry
Combines	(0.8)%	up low single digits
Loader/backhoes	down low double digits	up low single digits
Skid Steer Loaders	down mid single digits	up low double digits
Total Heavy Construction Equipment	up low single digits	up moderate double digits
RETAIL UNIT SALES: 6 MONTHS, 2006		
Agricultural Tractors:		
under 40 horsepower (2WD)	+0.2%	down low single digits
40 to 100 horsepower (2WD)	+3.4%	up low double digits
over 100 horsepower (2WD)	(10.5)%	up low single digits
4 wheel drive tractors	(12.9)%	down low double digits, in line with the industry
Sub total tractors over 40 hp	(0.5)%	up high single digits
Total Ag tractors	(0.1)%	up mid single digits
Combines	+2.3%	up low double digits
Loader/backhoes	down low double digits	down low single digits
Skid Steer Loaders	down mid single digits	up low double digits
Total Heavy Construction Equipment	up high single digits	up high single digits, in line with the industry
DEALER INVENTORIES: END OF MAY 2006		
Agricultural Tractors:		
under 40 horsepower (2WD)	6.5 months supply	in line with the industry
40 to 100 horsepower (2WD)	5.5 months supply	in line with the industry
over 100 horsepower (2WD)	3.9 months supply	in line with the industry
4 wheel drive tractors	3.2 months supply	in line with the industry
Total tractors	5.9 months supply	in line with the industry
Combines	3.4 months supply	> 1 month more than the industry


[HOME](#) > [INDUSTRY TRENDS](#) > U.S. AG FLASH REPORTS >

Search Here

60

Member Login

About Us

AEM Offices

What's New

News & Information

Calendar

Industry Trends

[InformaEcon Daily Ag Report](#)
[U.S. Ag Flash Report](#)
[Canadian Ag Flash Report](#)
[State of Ag Industry Report](#)
[Quarterly Trends Reports](#)
[Construction Equipment Index](#)
[Annual CE Business Outlook](#)
[Industry Resources](#)
[Economic Trends & Reports](#)
[Rental Resources](#)
[Surveys](#)

Technical

Safety & Training

Statistics

Government Affairs

Global Public Policy

Education

Trade Shows

International Services

[Councils, Bureaus,
& Committees](#)

AEM Store

Links & Directories

Industry Trends

U.S. Ag Flash Reports

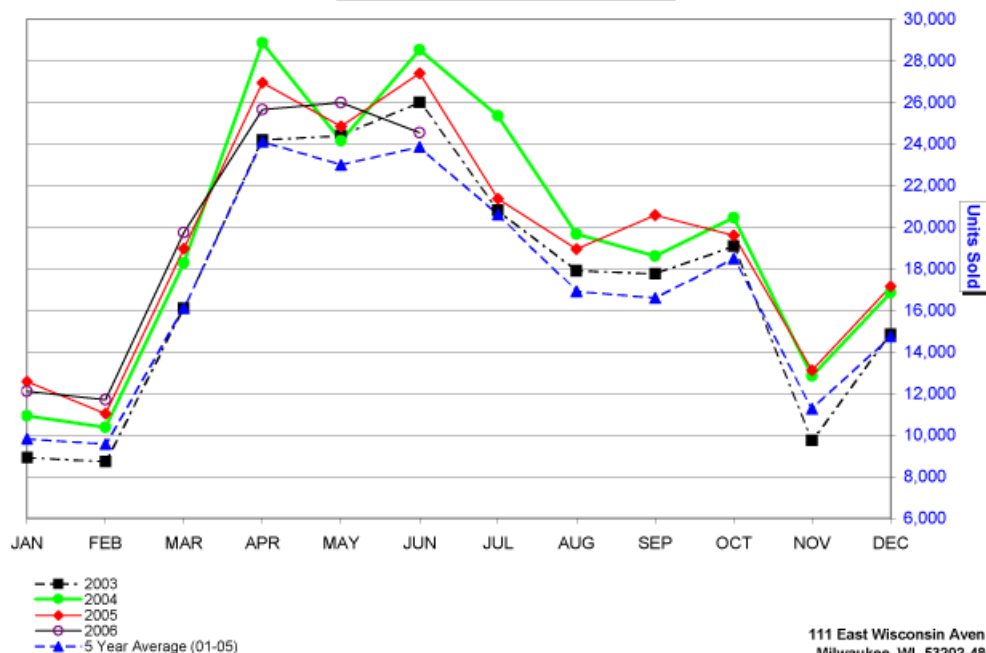
June 2006 Flash Report

U.S. Unit Retail Sales

(Report released 7/11/2006)

To download a PDF of this report, please [click here](#).

Equipment	June 2006	June 2005	% Chg.	Y-T-D 2006	Y-T-D 2005	% Chg.	May 2006 U.S. Field Inventory
Farm Wheel Tractors - 2 Wheel Drive							
Under 40 HP	14,058	16,372	-14.1	67,800	68,483	-1.0	69,078
40 & Under 100 HP	8,425	8,522	-1.1	39,228	38,047	3.1	34,994
100 HP & Over	1,187	1,582	-25.0	9,512	10,951	-13.1	5,719
Total - 2 Wheel Drive	23,670	26,476	-10.6	116,540	117,481	-0.8	109,791
Total - 4 Wheel Drive	225	279	-19.4	1,648	1,961	-16.0	863
Total Farm Wheel Tractors	23,895	26,755	-10.7	118,188	119,442	-1.0	110,654
Combines (Self-Propelled)	635	640	-0.8	2,477	2,417	2.5	1,707

Association of
Equipment ManufacturersU.S. Unit Retail Sales
2-4 WD Tractors & Combines

111 East Wisconsin Avenue
 Milwaukee, WI 53202-4806
 (414) 298-4146 (414) 272-2464/FAX
 Web Site: www.aem.org
 E-mail: dcarson@aem.org

These data are, in part, estimates that are subject to revisions when final detail data become available. Because of the seasonal nature of the industry, comparisons of monthly data from one period to another should be done with extreme caution. These data represent most, but not all, of the manufacturers in each product category being sold at retail in the fifty states and the District of Columbia.

Ag Flash Report is updated by the 15th of the month.

Interested in subscribing to market data reports? [Click here](#). For further information, please contact Deb Carson at 414-298-4146.

[To U.S. Ag Flash Report Archive >>](#)

© 2006, AEM
Association of Equipment Manufacturers
Toll Free: 866-AEM-0442
Click [here](#) to read our Legal and Privacy
Information
[Contact Us](#)



[Headquarters Office](#)
6737 W. Washington Street, Suite 2400
Milwaukee, WI 53214-5647
Phone: 414-272-0943 Fax: 414-272-1170


[HOME](#) > [INDUSTRY TRENDS](#) > CANADIAN AG FLASH REPORTS >

 [GO](#)
[Member Login](#)
[About Us](#)
[AEM Offices](#)
[What's New](#)
[News & Information](#)
[Calendar](#)
[Industry Trends](#)

[InformaEcon Daily Ag Report](#)
[U.S. Ag Flash Report](#)
[Canadian Ag Flash Report](#)
[State of Ag Industry Report](#)
[Quarterly Trends Reports](#)
[Construction Equipment Index](#)
[Annual CE Business Outlook](#)
[Industry Resources](#)
[Economic Trends & Reports](#)
[Rental Resources](#)
[Surveys](#)

[Technical](#)
[Safety & Training](#)
[Statistics](#)
[Government Affairs](#)
[Global Public Policy](#)
[Education](#)
[Trade Shows](#)
[International Services](#)
[Councils, Bureaus,
& Committees](#)
[AEM Store](#)
[Links & Directories](#)

Industry Trends

Canadian Ag Flash Reports

June 2006 Flash Report Canada Unit Retail Sales

(Report released 7/11/2006)

These data are, in part, estimates that are subject to revisions when final detail data become available. Because of the seasonal nature of the industry, comparisons of monthly data from one period to another should be done with extreme caution. These data represent most, but not all, of the manufacturers in each product category being sold at retail in the Provinces of Canada.

To download a PDF of this report, please [click here](#).

	June			June YTD			May	
Equipment	2006	2005	% Chg.	2006	2005	% Chg.	2006 Canadian (Field) Inventory	2005 Canadian (Field) Inventory
Farm Wheel Tractors - 2 Wheel Drive								
Under 40 HP	1,388	1,244	11.6	4,983	4,147	20.2	5,567	4,452
40 & Under 100 HP	732	729	0.4	3,376	3,161	6.8	3,218	3,146
100 HP & Over	342	394	-13.2	1,968	1,877	4.8	1,569	1,583
Total - 2 Wheel Drive	2,462	2,367	4.0	10,327	9,185	12.4	10,354	9,181
Total - 4 Wheel Drive	53	29	82.8	386	375	2.9	193	234
Total Farm Wheel Tractors	2,515	2,396	5.0	10,713	9,560	12.1	10,547	9,415
Combines (Self-Propelled)	156	157	-0.6	514	508	1.2	662	602

These data are, in part, estimates that are subject to revisions when final detail data become available. Because of the seasonal nature of the industry, comparisons of monthly data from one period to another should be done with extreme caution.

Ag Flash Report is updated by the 15th of the month.

Interested in subscribing to market data reports? [Click here](#). For further information, please contact Deb Carson at 414-298-4146.

[Go To Canadian Ag Flash Reports Archive >>](#)

© 2006, AEM
 Association of Equipment Manufacturers
 Toll Free: 866-AEM-0442
 Click [here](#) to read our Legal and Privacy
 Information
[Contact Us](#)



[Headquarters Office](#)
 6737 W. Washington Street, Suite 2400
 Milwaukee, WI 53214-5647
 Phone: 414-272-0943 Fax: 414-272-1170