

Marlene Dooner

Vice President
Investor Relations
Comcast Corporation



Safe Harbor

Caution Concerning Forward-Looking Statements

This presentation contains forward-looking statements within the meaning of the Private Securities Litigation Reform Act of 1995. In some cases, you can identify those so-called “forward-looking statements” by words such as “may,” “will,” “should,” “expects,” “plans,” “anticipates,” “believes,” “estimates,” “predicts,” “potential,” or “continue,” or the negative of those words and other comparable words. We wish to take advantage of the “safe harbor” provided for by the Private Securities Litigation Reform Act of 1995 and we caution you that actual events or results may differ materially from the expectations we express in our forward-looking statements as a result of various risks and uncertainties, many of which are beyond our control. Factors that could cause our actual results to differ materially from these forward-looking statements include: (1) changes in the competitive environment, (2) changes in our programming costs, (3) changes in laws and regulations, (4) changes in technology, (5) adverse decisions in litigation matters, (6) risks associated with acquisitions and other strategic transactions, (7) changes in assumptions underlying our critical accounting policies, and (8) other risks described from time to time in reports and other documents we file with the Securities and Exchange Commission.

Non-GAAP Financial Measures

Our presentation may also contain non-GAAP financial measures, as defined in Regulation G, adopted by the SEC. We provide a reconciliation of these non-GAAP financial measures to the most directly comparable GAAP financial measure in our quarterly earnings releases, which can be found on the Financial Information page of our web site at www.cmcsa.com or www.cmcsk.com.

The Comcast logo features a red, stylized 'C' shape on the left, followed by the word 'comcast' in a white, lowercase, sans-serif font. A registered trademark symbol (®) is located at the end of the word.

comcast®

A dark, semi-transparent reflection of the Comcast logo is positioned directly below the main logo, mirroring its shape and text.

comcast

Brian Roberts

Chairman and Chief Executive Officer
Comcast Corporation

The Comcast logo features a red, stylized 'C' shape on the left, followed by the word 'comcast' in a white, lowercase, sans-serif font. A registered trademark symbol (®) is located at the end of the word.

comcast®

A dark, semi-transparent reflection of the Comcast logo is positioned directly below the main logo, mirroring its shape and text.

comcast

Commitment to Long-Term Shareholder Value

The New York Times

2006 Best Performing Widely-Held Stock with 63.3% Return

THE WALL STREET JOURNAL.

Comcast ranked #10 out of the Top 50 largest companies in equity returns over the last 10 years

\$7,000

1972

1,000 Shares of CMCSA Purchased at the IPO at \$7 per Share

\$3,599,091

Average Annual Return

CMCSA 19.6%

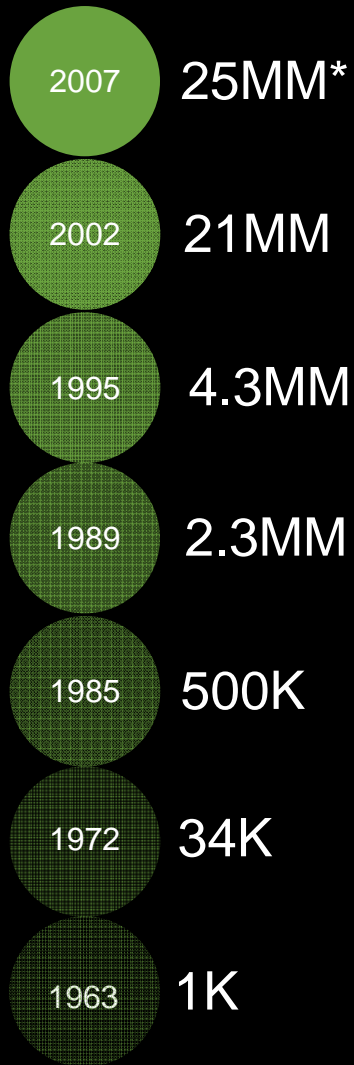
S&P 500 Index 10.3%

04/27/2007



Analyst and Investor Day
May 1, 2007

History of Growth... Led By Cable



Subscribers

Comcast since 1990

- Acquired ~23MM subscribers
- In 17 major transactions

Significant Scale Today

- 20 of the top 25 markets
- Nearly 48 million homes passed
- In 39 states and the District of Columbia
- 90,000 employees

* Includes pending acquisitions with Insight Communications and Patriot Media Communications

Analyst and Investor Day
May 1, 2007

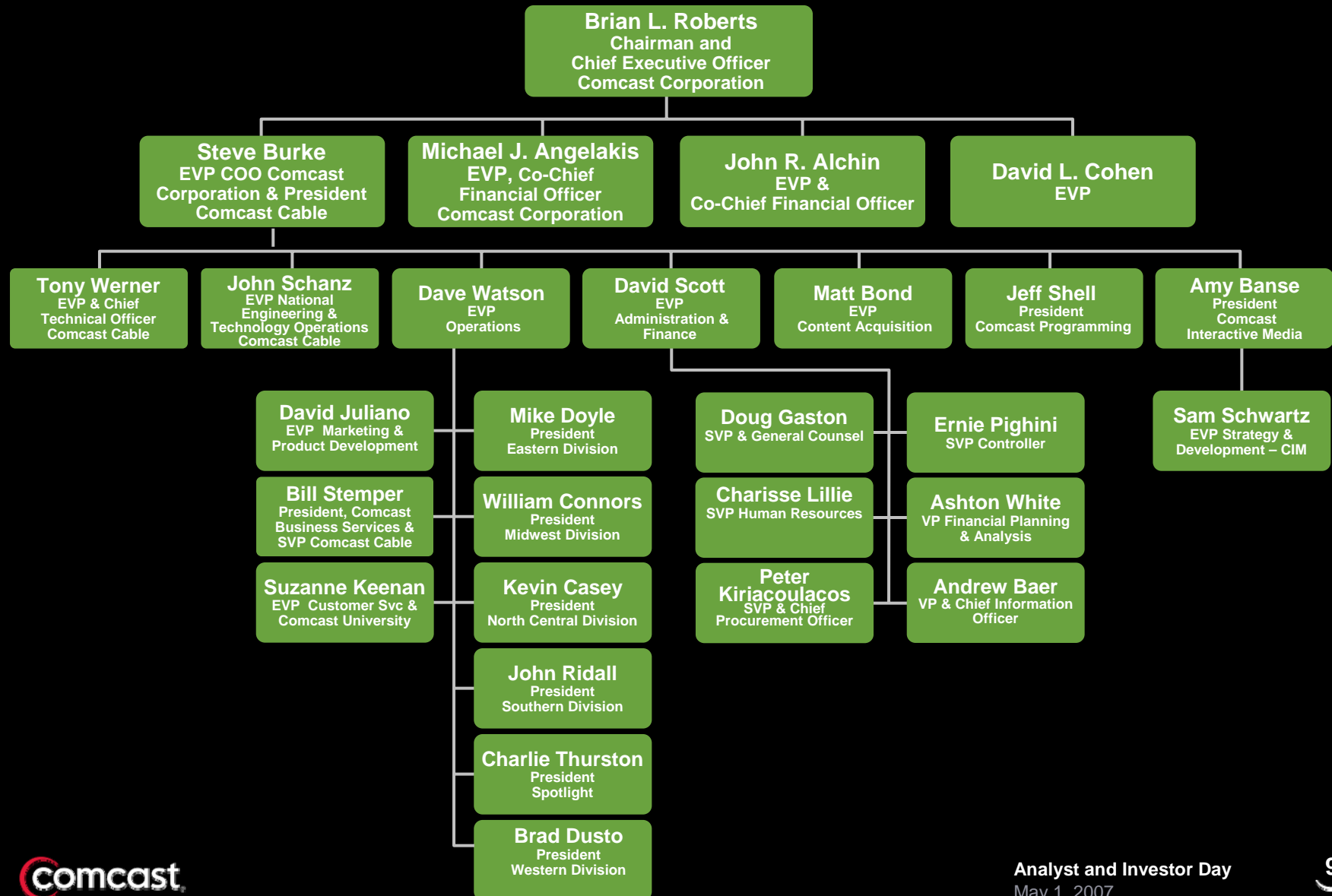
The Comcast logo is centered on a black background. It features a red, stylized 'C' shape on the left, which is a thick, curved line that does not fully close. To the right of this 'C' is the word 'comcast' in a white, lowercase, sans-serif font. A small registered trademark symbol (®) is located at the end of the word.

comcast®

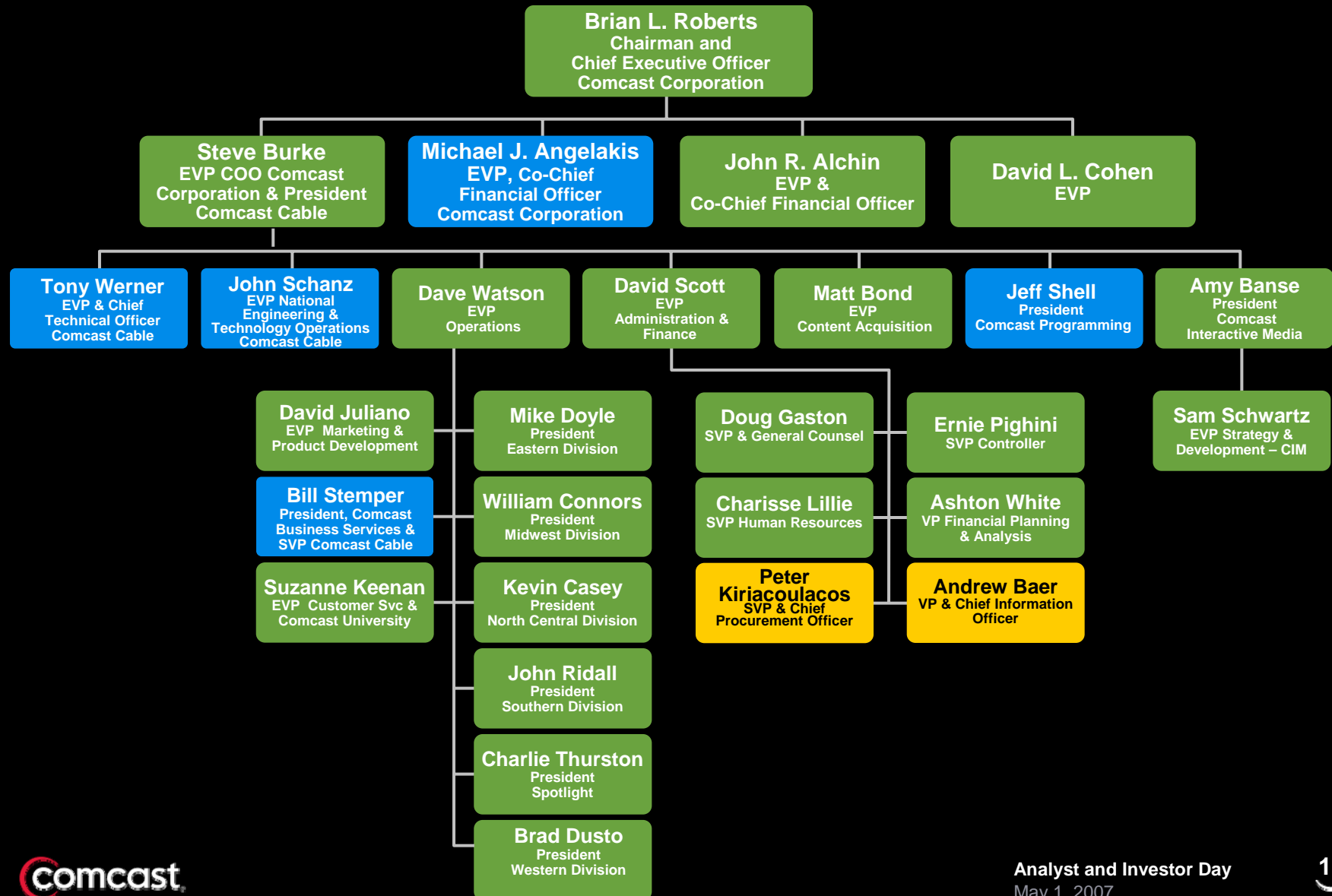
A faint, dark gray reflection of the Comcast logo is positioned directly below the main logo. It mirrors the red 'C' and the white text 'comcast' but is significantly less bright and more blurred, creating a subtle shadow effect.

comcast

Industry-Leading Management Team



Industry-Leading Management Team



comcast®

comcast

On Demand VOD Usage

More than 4 Billion
ON DEMAND views
since 2004

MAR 2007:
203 Million
Views

MAR 2006:
144 Million
Views

MAR 2005:
102 Million
Views

MAR 2004:
36 Million
Views



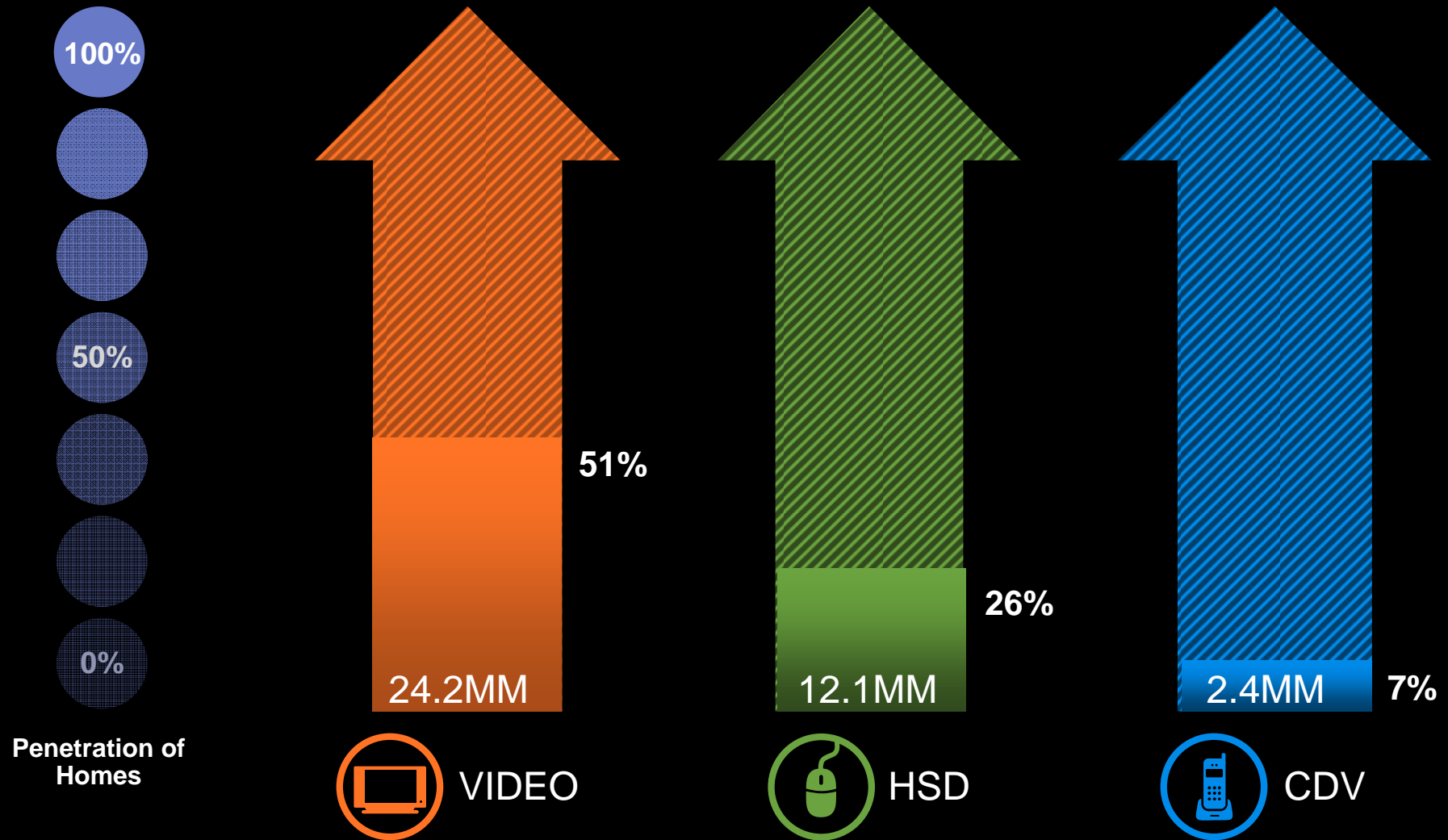
The Comcast logo features a red, stylized 'C' shape on the left, followed by the word 'comcast' in a white, lowercase, sans-serif font. A registered trademark symbol (®) is located at the end of the word.

comcast®

A dark, semi-transparent reflection of the Comcast logo is positioned directly below the main logo, mirroring its shape and text.

comcast

Room to Grow



The Comcast logo features a red, stylized 'C' shape on the left, followed by the word 'comcast' in a white, lowercase, sans-serif font. A registered trademark symbol (®) is located at the end of the word.

comcast®

A dark, semi-transparent reflection of the Comcast logo is positioned directly below the main logo, mirroring its shape and text.

comcast

Building Value in Content



Value Creation*: \$17Bn+