



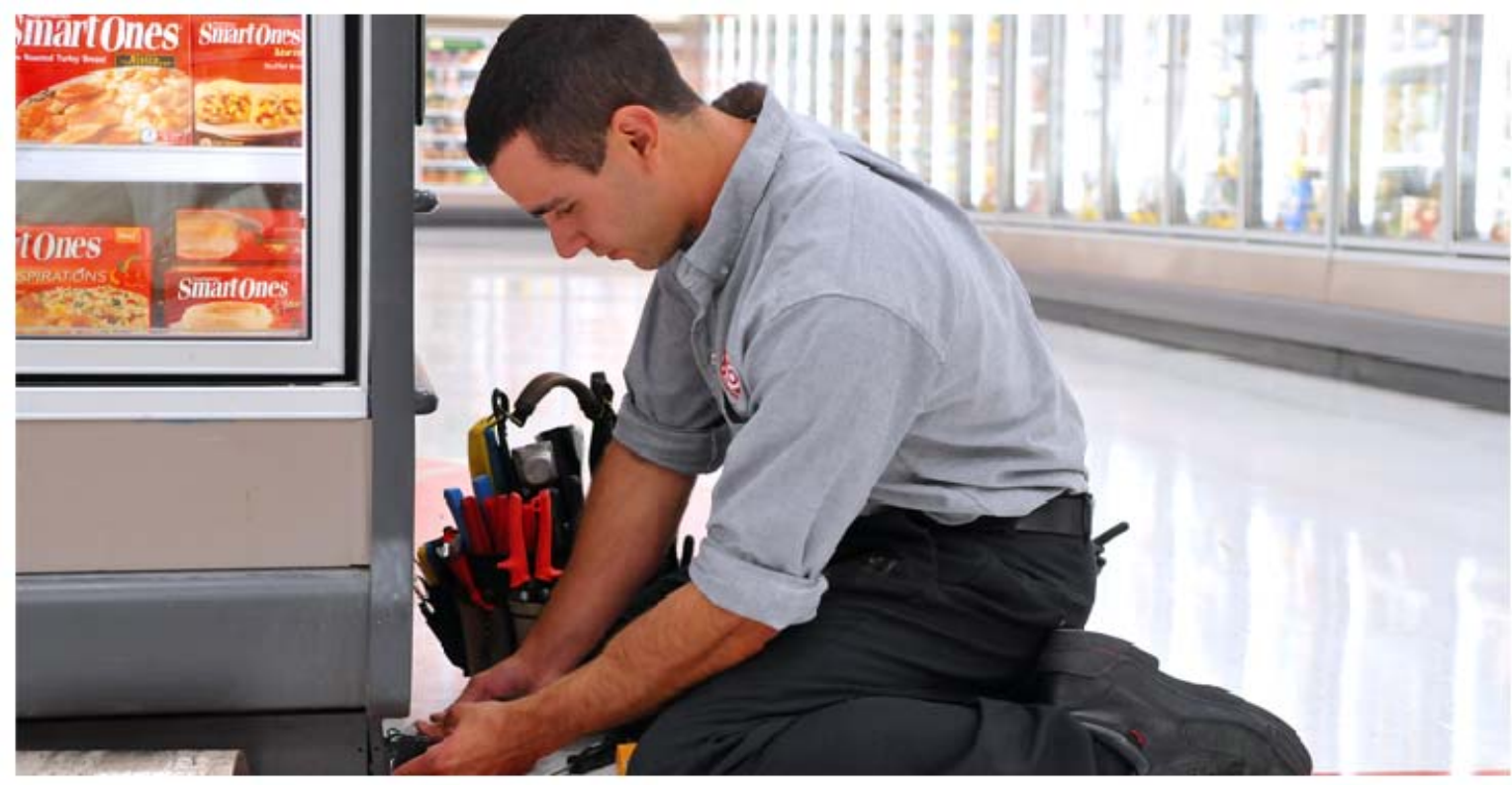
®

**John Griffith**

EVP, Property Development



®









A51

Expect More.  
Pay Less.

Napkins

Pet Care

A49

16.99

A47

Living Supplies

Small Electrics

B38

17.99

B40

Kitchen

B42

17.99

Dinnerware









# STORE DESIGN

Design for All

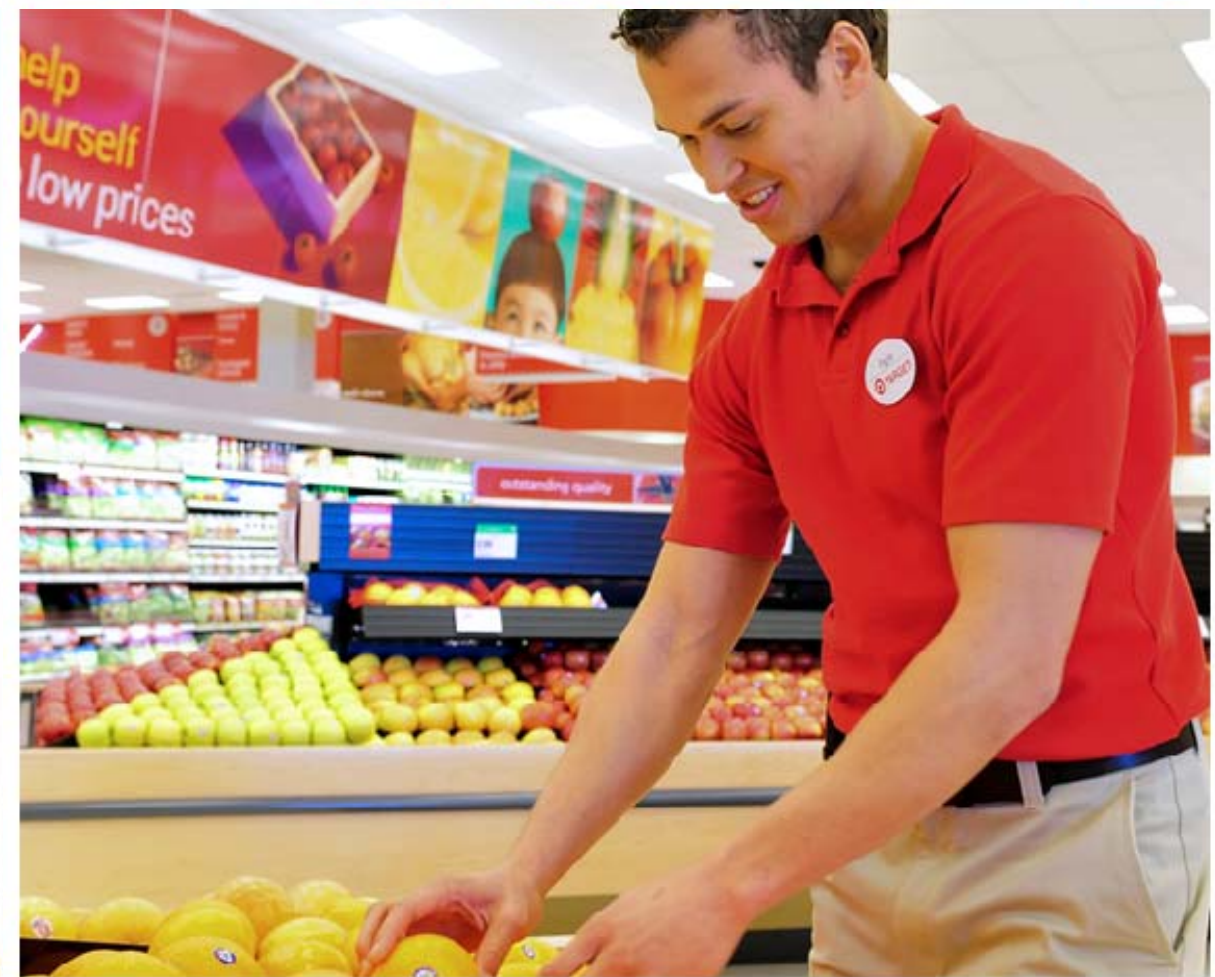


"It's rare to have the power to change a mood. Great design can."

Jovovich-Hawk



long live **face painting**









# GENERAL MERCHANDISE



# SUPERTARGET



# UNIQUE





# WACONIA



# OTSEGO













**Ready for the digital TV transition?**

After February 17, 2009, broadcast stations will stop broadcasting "analog" TV signals and will only broadcast digital (DTV) signals. If you currently use cable or satellite service for TV or have a digital TV, this change should not affect you. However, if you have an analog TV and rely on an over-the-air antenna to receive programming, you will no longer be able to receive broadcast signals on that TV.

**You will have 2 options:**

- Upgrade to a TV that has a built-in digital tuner.
- Purchase an external converter box to attach to your TV. The U.S. government is providing \$50 coupons to all U.S. households to be used toward the purchase of converter boxes. You can order 3 coupons for your household by calling 1-800-735-2289 or visiting [www.DTV2009.gov](http://www.DTV2009.gov).

MAGNAVOX  
529

HDTV Performance Kit  
BELKIN











# BEFORE



# AFTER





**SUSTAINABILITY**



# TARGET<sup>®</sup> IS GOING GREEN

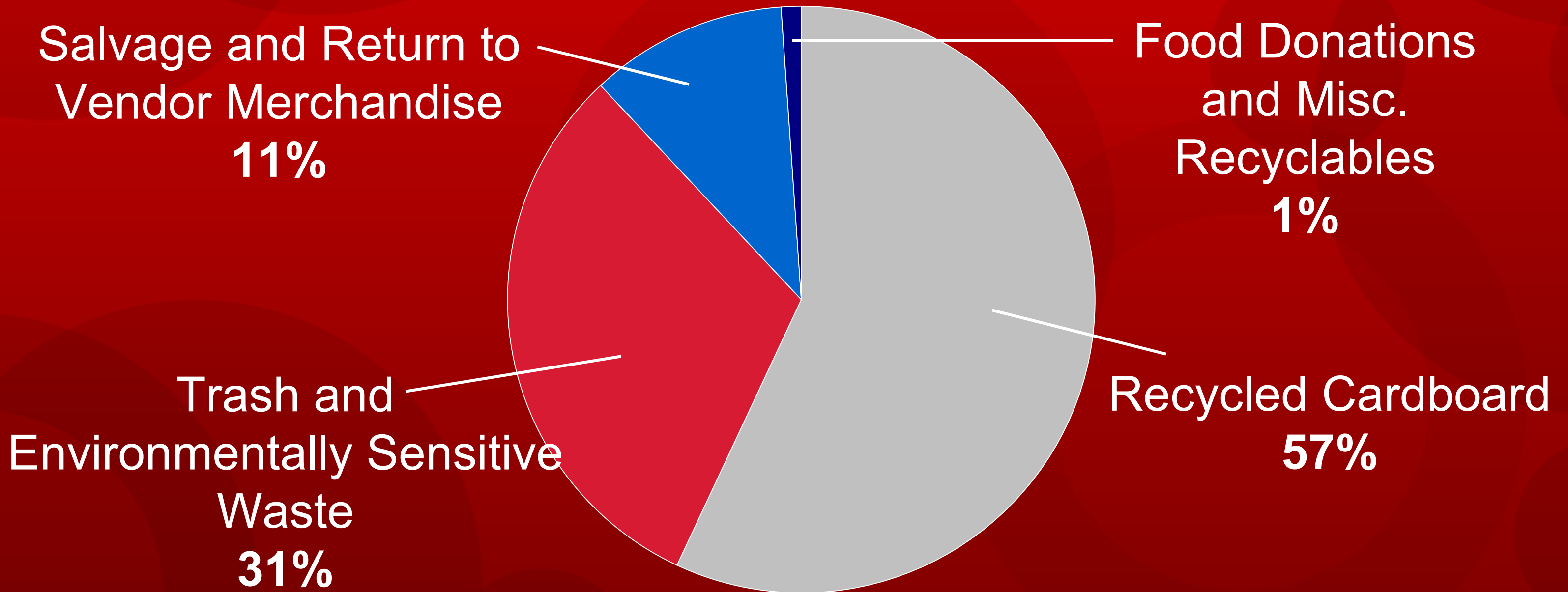
Target will complement its familiar red with shades of environmentally conscious green in the proposed Davis store.

The City of Davis asked, and Target said "yes" to constructing a LEED-certified building — the second such planned by the company.



# RECYCLING PROGRAMS

Distribution Center and Store Operations







**LEED™**

**Leadership in Energy and Environmental Design**

# LEED ELEMENTS

- Low-flow fixtures in restrooms reduce water use by 30%
- HVAC systems that exceed city codes by 30%
- Light fixtures that require only two bulbs rather than three





# SITE SELECTION PROCESS

- Leverage data and modeling from Finance and Market research partners
  - Appropriate format and investment
  - Demographics and retail density
  - Generate the highest rate of return



# BROOKLYN JUNCTION









®

# STORE GROWTH

- Chosen to delay construction on projects
- Update site specific sales estimates
- Meet our required financial or brand criteria



®

