



# Boddington Site Tour

October 1, 2010

# Cautionary Statement

This presentation contains “forward-looking statements” within the meaning of Section 27A of the Securities Act of 1933, as amended, and Section 21E of the Securities Exchange Act of 1934, as amended which are intended to be covered by the safe harbor created by such sections and other applicable laws. Such forward-looking statements include, without limitation: (i) estimates of future mineral production and sales; (ii) estimates of future costs applicable to sales, other expenses and taxes, for specific operations and on a consolidated basis; (iii) estimates of future capital expenditures, construction, production or closure activities; (iv) statements regarding future exploration potential, expenditures, results, reserves resources and NRM; (v) statements regarding fluctuations in capital and currency markets; (vi) statements regarding potential cost savings, productivity, operating performance, and cost structure; (vii) expectations regarding the development, growth, mine life, stage gate planning, remediation planning, production and costs applicable to sales and exploration potential of the Company’s projects, including at Carlin, Leeville/Turf, Midas, Phoenix and Twin Creeks; and (viii) expectations regarding the impacts of operating, technical or geotechnical issues in connection with the Company’s projects or operations. Estimates or expectations of future events or results are based upon certain assumptions, which may prove to be incorrect. Such assumptions, include, but are not limited to: (i) there being no significant change to current geotechnical, metallurgical, hydrological and other physical conditions; (ii) permitting, development, operations and expansion of the Company’s projects being consistent with current expectations and mine plans; (iii) political developments in any jurisdiction in which the Company operates being consistent with its current expectations; (iv) certain exchange rate assumptions for the Australian dollar to the U.S. dollar, as well as other the exchange rates being approximately consistent with current levels; (v) certain price assumptions for gold, copper and oil; (vi) prices for key supplies being approximately consistent with current levels; and (vii) the accuracy of our current mineral reserve and mineral resource estimates. Where the Company expresses or implies an expectation or belief as to future events or results, such expectation or belief is expressed in good faith and believed to have a reasonable basis. However, such statements cannot be guaranteed and are subject to risks, uncertainties and other factors, which could cause actual results to differ materially from future results expressed, projected or implied by the “forward-looking statements”. Such risks include, but are not limited to, gold and other metals price volatility, currency fluctuations, increased production costs and variances in ore grade or recovery rates from those assumed in mining plans, political and operational risks in the countries in which we operate, and governmental regulation and judicial outcomes. For a more detailed discussion of such risks and other factors, see the Company’s 2009 Annual Report on Form 10-K, filed on February 25, 2010, with the Securities and Exchange Commission, as well as the Company’s other SEC filings. The Company does not undertake any obligation to release publicly revisions to any “forward-looking statement,” including, without limitation, outlook, to reflect events or circumstances after the date of this news release, or to reflect the occurrence of unanticipated events, except as may be required under applicable securities laws.

# Boddington Site Visit - Agenda

- 9:00am - Arrival, Introduction
- 9:40am - Mine overview
- 9:55am - Safety overview
- 10:00am - Tour of mine area
- 12:00pm - Lunch & ESR presentation
- 1:00pm - Processing overview
- 1:15pm - Processing Plant Tour
- 4:00pm - Return to Perth
- 7:00pm - Casual dinner at Caffè Italia  
*(meet in hotel lobby at 6:45pm)*



# Newmont Boddington Gold Second Quarter Update

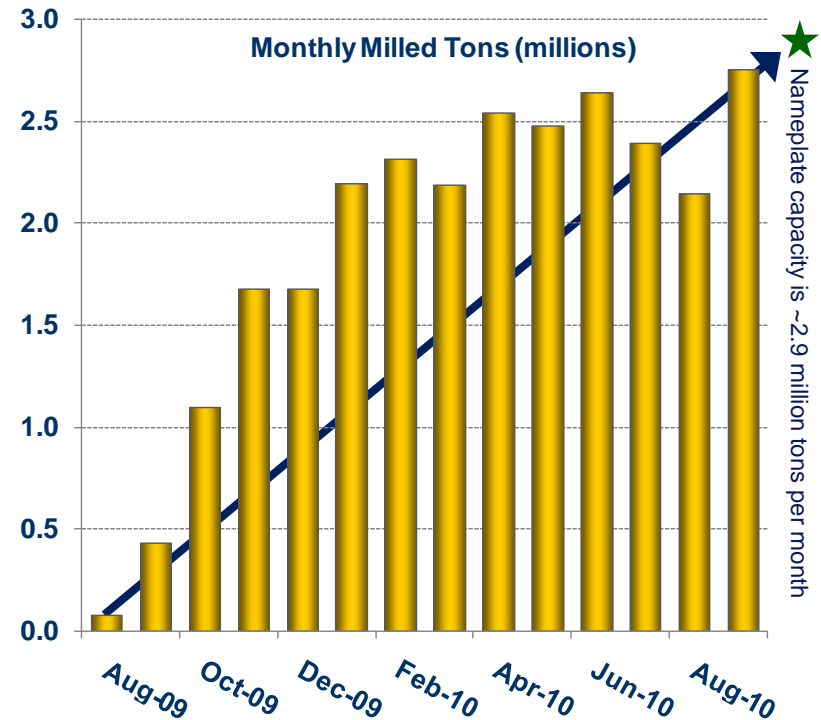
As of our Q2 Earnings Release on July 28, 2010:

## Positives

- ✓ Recoveries (Au and Cu)
- ✓ ~23% more contained copper<sup>1</sup> through Q2 2010
- ✓ Concentrate quality
- ✓ HPGR performance
- ✓ Wet plant performance

## Challenges

- ~12% less contained gold<sup>1</sup> through Q2 2010
- Dry plant wear rates
- Mining costs
- Fragmentation



		Q4 '09	Q1 '10	Q2 '10
Production	Au (Koz)	118	158	184
	Cu (Mlbs)	10	14	15
CAS (\$/oz)	Co-product	\$468	\$532	\$582
	By-product <sup>2</sup>	\$352	\$436	\$503

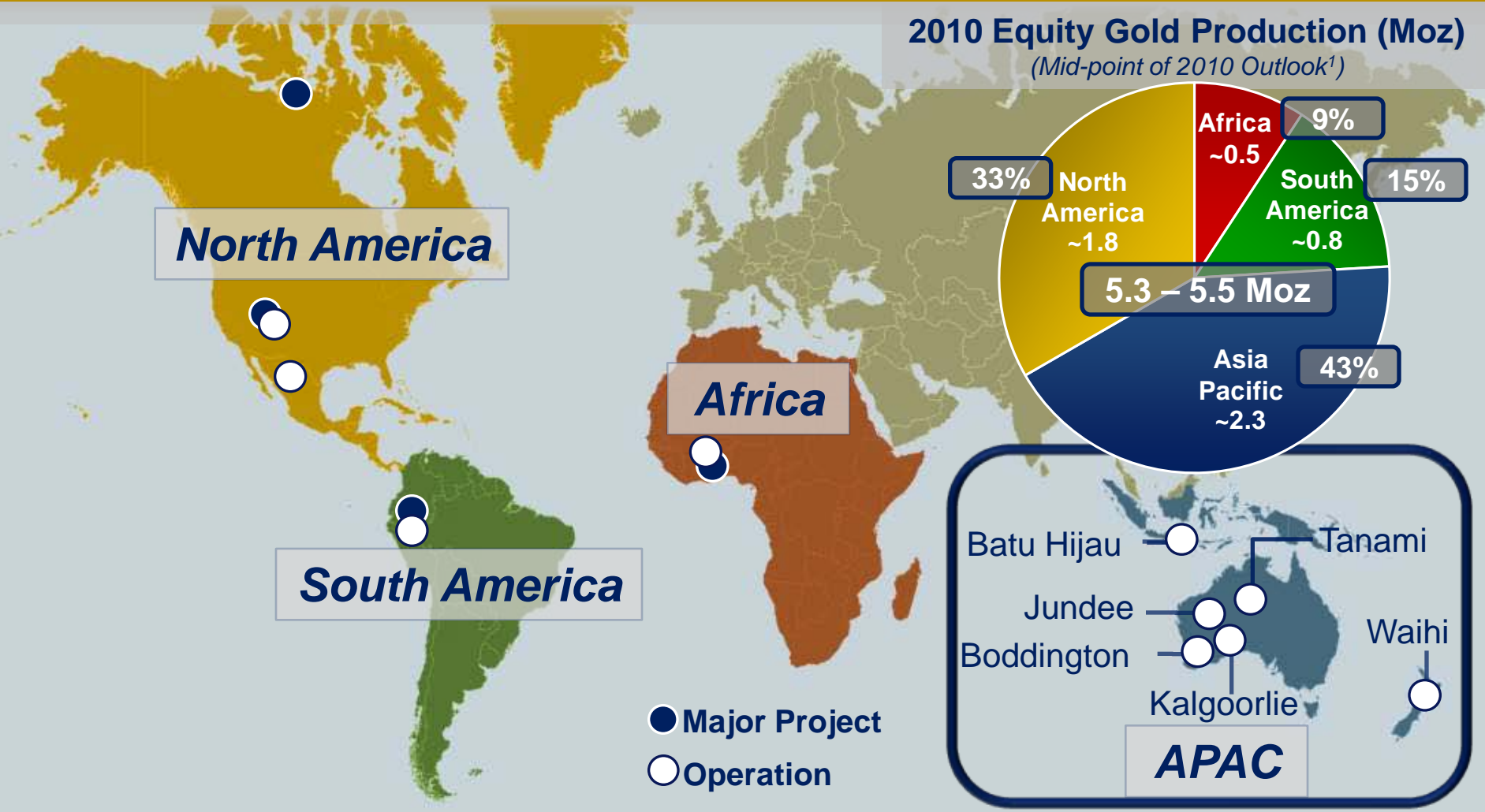
<sup>1</sup> Model reconciliation based on 2% of reserves mined, with contained metal compared against modeled estimates

<sup>2</sup> Refer to slide 33 for reconciliation of Co-Product Costs Applicable to Sales to By-Product Costs Applicable to Sales

# Asia Pacific (APAC) Leadership Team

<b>APAC</b>	
Tim Netscher	Sr. VP Asia Pacific Operations
Phil Stephenson	Group Executive Operations
Andrew Strelein	Group Executive Business
Ken Ramsey	Group Executive Environment & Social Responsibility
Michael Bisset	Group Executive Human Resources
Rubini Ventouras	Group Executive Legal
Brian Watt	Principal Advisor Communications and Public Affairs
Andrew Young	Director Project Development
Martiono Hadianto	President Director, PT Newmont Nusa Tenggara
<b>Boddington</b>	
Darren Hall	General Manager of Operations
Trevor McIlwaine	Mining Manager
Ian McGaffin	Process Manager

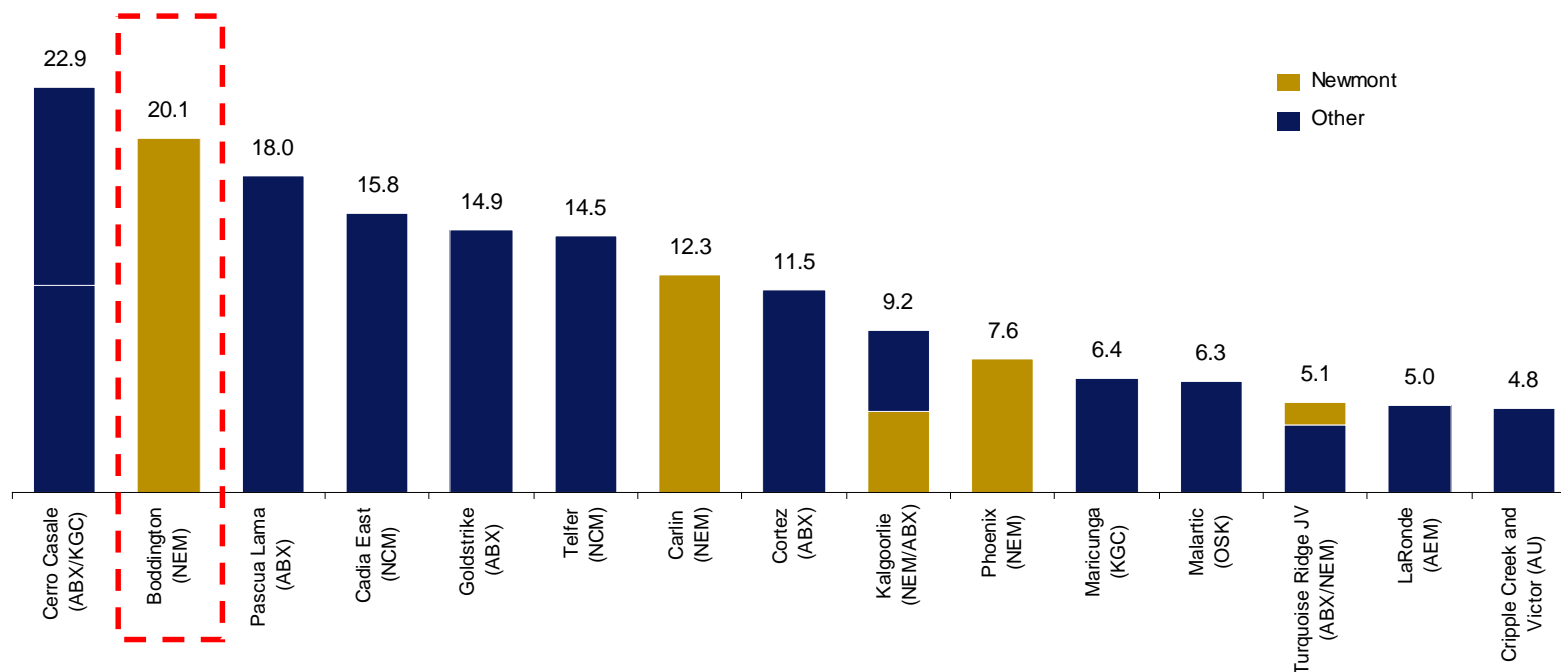
# Newmont Boddington Gold Global Portfolio



<sup>1</sup> 2010 Outlook refers to outlook issued on 7/28/2010. See cautionary statement regarding reliance on outlook data on slide 32.

# Newmont Boddington Gold Proven & Probable Reserves

Reserves rank 2<sup>nd</sup> amongst top gold deposits in countries with an A or better credit rating.



Source: Minesearch & company reports - Presented at the April 2009 *Paydirt* conference from 2008/09 data

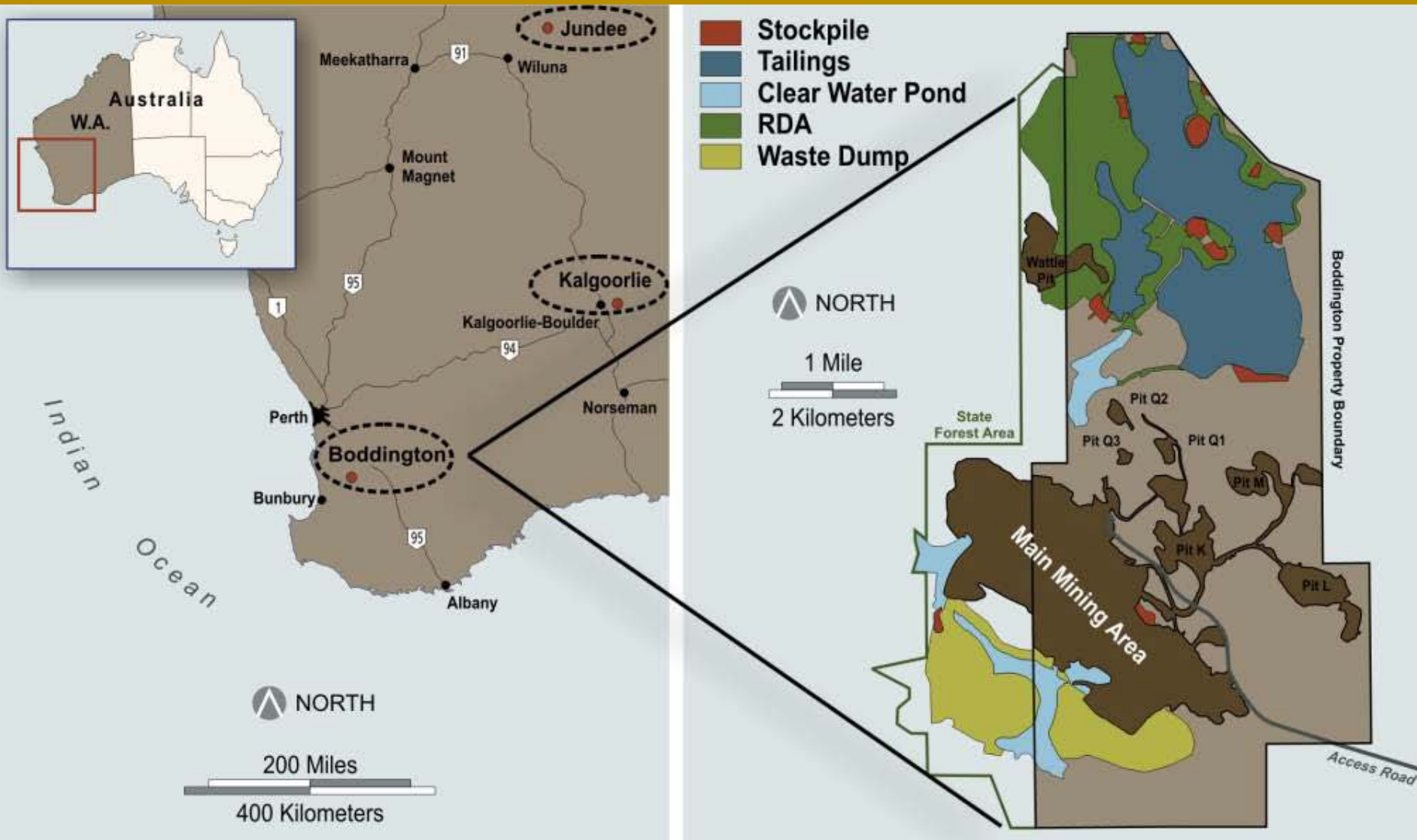
## Boddington has consistently expanded Reserves and NRM over the last five years.

- As of December 2009, Reserves were 21.0 Moz and NRM was 9.8 Moz up from 20.1 Moz and 8.8 Moz in December 2008 respectively.
- 2010 reserves target is to add another 1 Moz but will be offset by the year's planned production.
- Early-stage potential and mineral inventory estimates presently range between 7 and 9 million ounces.

# Newmont Boddington Gold Video - Mining Process



# Boddington Operations – Western Australia



# Newmont Boddington Gold Key Asset Facts

## Construction Statistics

- Overland conveyor length: 2.2 kms
- Total length of all conveyors: 5.3 kms
- Concrete placed: 95,000 cu m
- Structural Steel: 16,600 tonnes
- Steel Plate work: 4,500 tonnes
- Piping: 110,000 meters
- Cable: 1,500,000 meters



Overland conveyor

Crushing facility



Boddington Site Tour

# Newmont Boddington Gold

## Key Asset Facts

### Mining

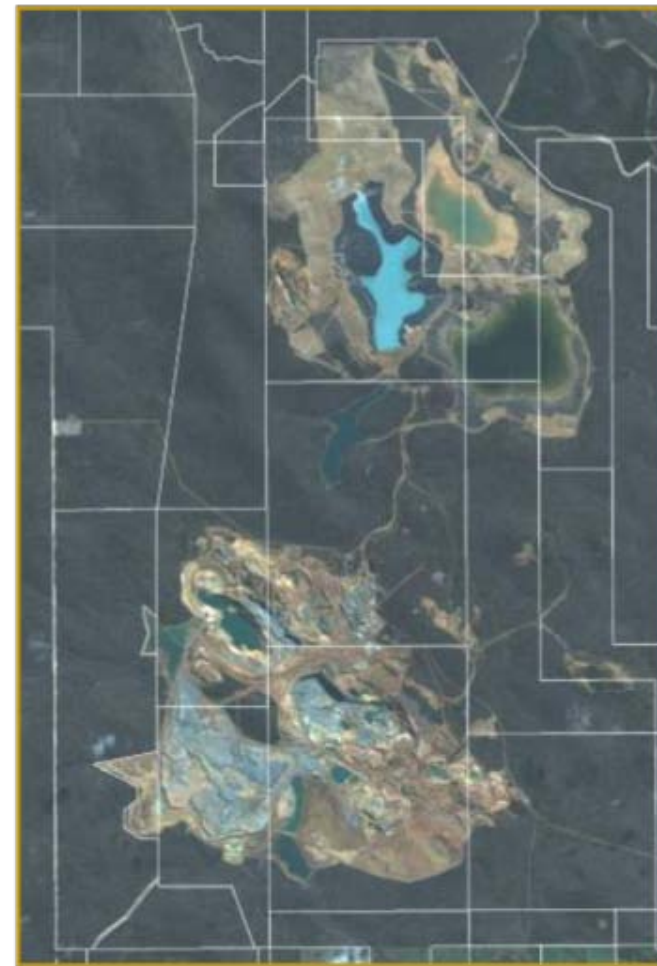
- Two large open pits
- Peak material movement: 100M - 120Mtpa (in early years)

### Processing

- Very tough, hard rock (100 - 250MPa)
- Three stage crushing (HPGR for third stage) + single stage grinding
- Copper/gold flotation followed by gold leaching (CIL)
- Two products:
  - Copper-gold concentrate to smelters
  - Dore to refineries

### Power Supply

- Based on IPP offsite supply



# Newmont Boddington Gold

## Key Asset Facts

### Equipment Highlights

- 2 – 60 x113 primary crushers
- 5 – MP 1000 secondary crushers
- 4 – High Pressure Grinding Rolls (HPGR's)
- 4 – 26' x 44' ball mills with largest twin pinion drive produced to date
- +30 – CAT 793D mine haul trucks, 3 electric rope shovels and 1 hydraulic shovel



Mill

Haul truck and rope shovel

# Newmont Boddington Gold Key Asset Facts

## Ultimate Pit Dimensions

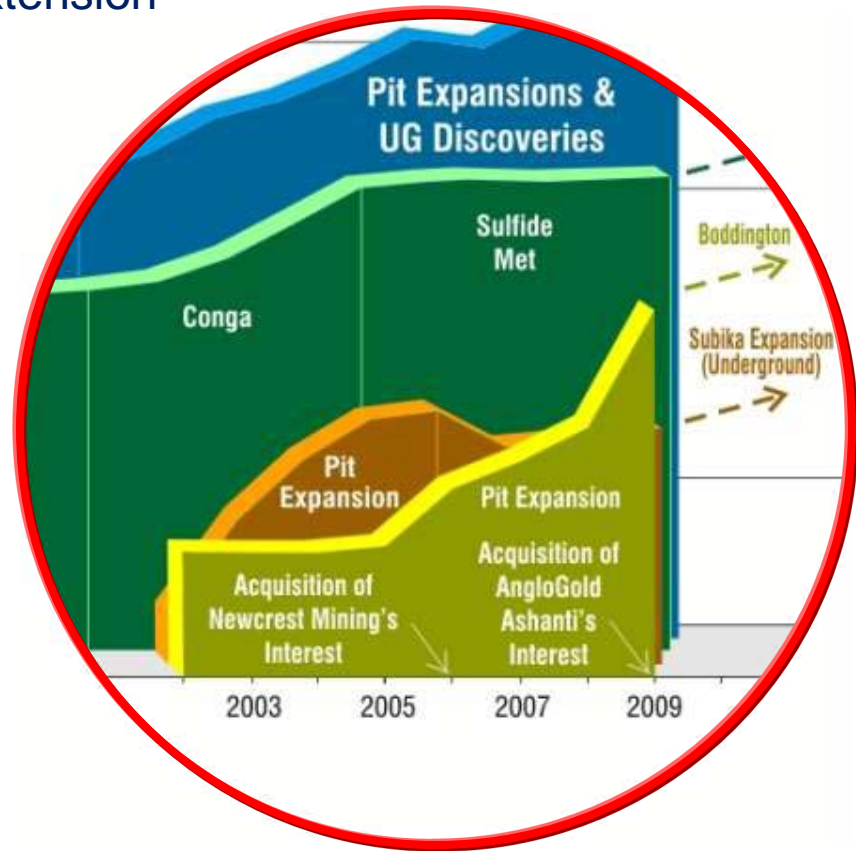
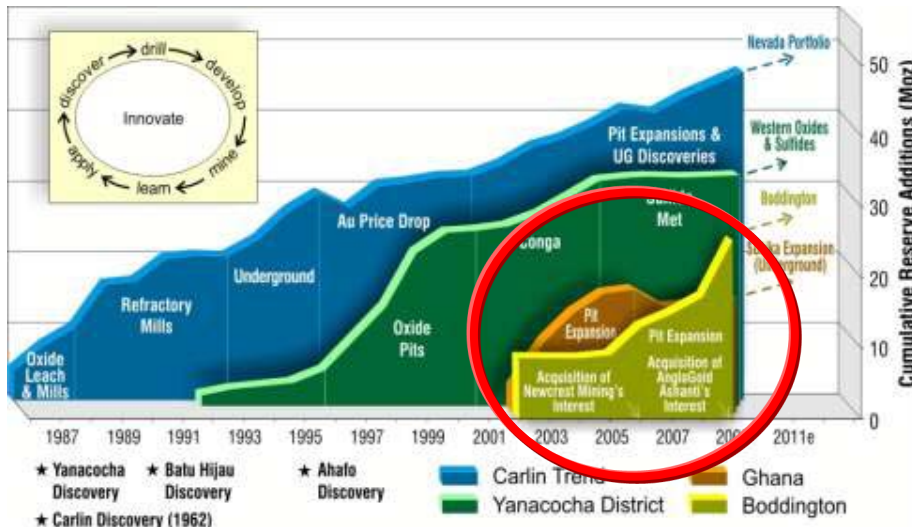
- Length: ~4,000 m
- Width: ~1,000 m
- Depth: ~700 m



Image of the skyscraper, Burj Dubai, to depict the future depth of the Boddington pit.

# Newmont Boddington Gold Exploration Opportunities

- Reserve of ~21 Moz Au<sup>1</sup>
- Up to 4 Moz Au and 0.5 Blb Cu expansion potential<sup>2</sup>
- Determine full potential of Boddington Pit extension
  - Enables facility optimization
- Potential lateral and depth extensions
- Belt exploration



<sup>1</sup> Reserves as of 12/31/09. 20.96Moz Au currently in reserves and 2,040 Mlb Cu currently in reserves. See slides 34-38.

<sup>2</sup> No ounces currently in reserves.

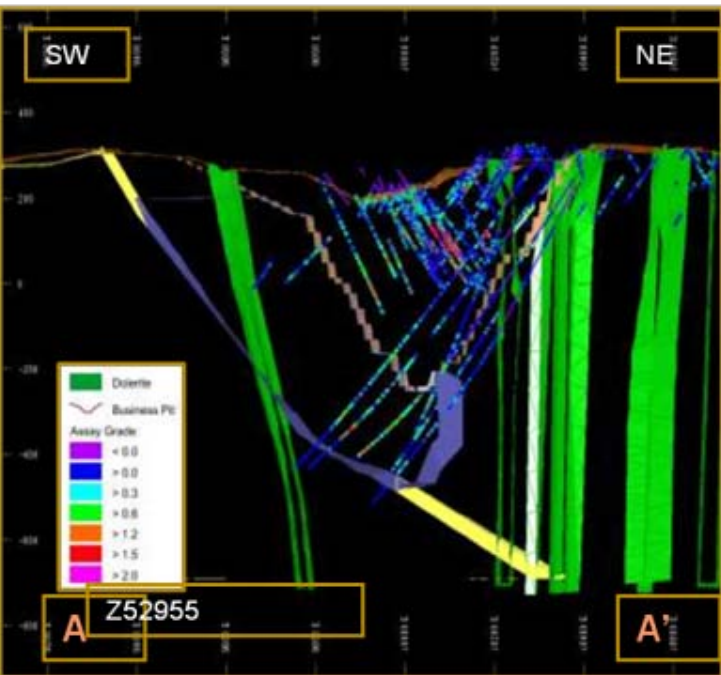
# Newmont Boddington Gold Wingspan Potential



- Testing apparent continuation between two pits
- Key Intercept – WRD12200-001 203m @ 0.91g/t Au



- Testing mineralization along west wall of North pit.
- Key intercept – WRD13020-001 200m @ 1.02 g/t Au



# Newmont Boddington Gold Community / Social Overview

Programs to help gain support from the community, NGOs and government stakeholders.

- **Living and Working in Boddington:** Providing incentives to encourage workforce to live within a 50km radius with plans to double the population of the Shire of Boddington.
- **Social Investment:** A number of community initiatives are well underway, including: contributions toward a 38-place Long Day Care Centre, hosting quarterly community workshops, representation on strategic community and government committees, promoting a road safety education program, and implementing the Boddington Gold Community Assistance Program.
- **Housing:** Entered into an agreement with WA Country Builders for the land development of six hectares, valued at \$1.7million.
- **Hire local:** Committed to hiring local employees and has committed to create a minimum of 100 jobs for the traditional owners group.
- **Buy local:** Engage local business for contracts through provision of information and services.

# Newmont Boddington Gold

## Environmental Considerations

The environment team employs a range of environmental programs to manage some unique challenges, particularly in relation to biodiversity management.

- **Environment committee:** Share expertise with local environmental groups and keep the community informed about the mine's environmental projects and practices.
- **Water Management:** Ensure efficient use and reuse of water on-site and contain all mine waters within the operations.
- **Flora & Fauna Management:** Specific programs are in place to protect and preserve the ecosystems around operations and the animals and plants they support.
- **Conservation:** Conversation programs include one to gain a greater understanding and mitigation of impacts to the three species of Black Cockatoo occurring on the site.
- **Closure Planning and Rehabilitation:** Plans to conduct concurrent rehabilitation once areas are no longer required for mining activities.
- **Cyanide Management:** NBG is responsible for managing the chemicals that it uses or produces in the extraction of gold.

A horizontal decorative border with a complex, colorful pattern of geometric and organic shapes, including spirals and zig-zags, in shades of blue, green, yellow, and red.

# Boddington Site Tour

## Mining Overview

# Newmont Boddington Gold

## Key Pit Design Parameters

- Project scheduled on primary tenet of maximising NPV by cut-off grade/stockpile optimisation
- Sequence sensitive ( 2 pits, 14 pit stages)
- Cut-off grade/stockpile optimisation
- Very hard, tough & abrasive rock
  - Andesite, Diorite (2.7 – 2.8t/m<sup>3</sup>, 100 – 250MPa)
  - Dolerite (3t/m<sup>3</sup>, >300MPa)
- 12m benches
- Oxide Slopes (50 – 150m deep)
  - 25° overall slope
- Bedrock Slopes (650m deep)
  - 24 - 36m bench stack
  - 59° - 64°inter ramp slope angle

# Newmont Boddington Gold Mining Equipment Overview



## Mining Fleet (MARC)

- 3 x Bucyrus 495HD's electric rope shovels
- 1 x Terex RH 340 electric hydraulic shovel
- 33 x Cat 793D trucks
- 1 x Hitachi EX3600 backhoe (hire)
- 1 x Cat 994 loader, 3 x Cat 785 trucks (rehandle)
- 1 x RH70, 1 x RH120 excavator
- 3 x Cat D11R, 2 x Cat D10T track dozers
- 4 x Cat 854G/K wheel dozers
- 2 x Cat 24H, 1 x Cat16H grader

## Mining Rate

- 110 – 120Mtpa ex pit
- ~10Mtpa stockpile rehandle

## Typical daily production

- ~300,000 tonnes ex pit
- ~4,000 m production drilling

# Newmont Boddington Gold Mining Equipment Overview (cont.)



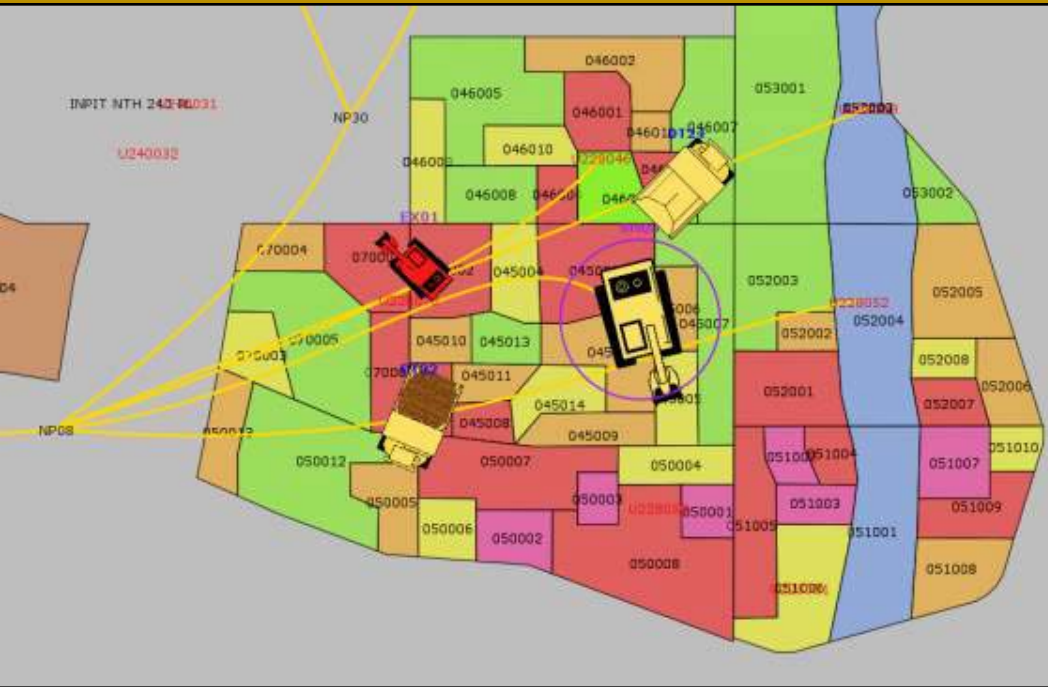
## Drilling Fleet (MARC)

- 9 x Atlas Copco DML (DHH)
- 2 x Atlas Copco PV271 (DHH)
- 2 x Atlas Copco ROCL8 (TH)
- 5 x DML / DM45 (on hire Ausdrill)
  - 216mm production holes
  - 165mm presplit holes

## Blasting

- Orica Total Down Hole Service with up to 4 x MMU trucks
- 130 tonnes per day capability 70:30 Emulsion/Anfo
- Powder factor increase from 1 to 1.2 kg/m<sup>3</sup> over last
- 12 months to improve fragmentation for shovel & crusher productivity

# Newmont Boddington Gold Fleet Management Systems



## Management

- Time Usage
- Material Tracking
- Dispatching

## Machine Guidance

- HP Shovels
- HP Drills
- HP Dozers

## System

- Leica / Jigsaw
- Wireless network
- High precision GPS on equipment
- Leica Locata 'ground satellites' as pit gets deeper

# Newmont Boddington Gold

## Key Gains in Shovel productivity

### Challenges

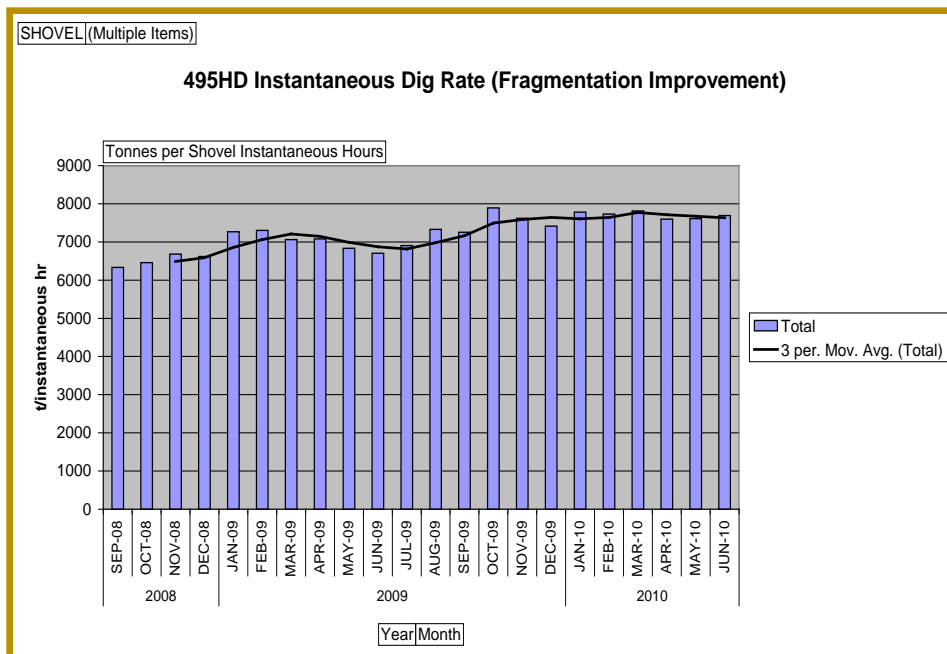
- Operator skills
- Double side loading
- Bench sequencing and work area configuration
- Fragmentation

### Wins

- Improved fragmentation has given better dig rates
- Implemented double side loading
- More effective shovel cleanup
- Better cable handling
- Better bench sequencing and work area configuration

### Opportunities

- GET storage on bench
- Dipper rebuild strategy: every 30 weeks with an 8-week rebuild period
- Rope life improvement



# Newmont Boddington Gold

## Key Gains in Truck payloads

### Challenges

- Matching shovel dipper size, configuration, fill factors and truck payloads

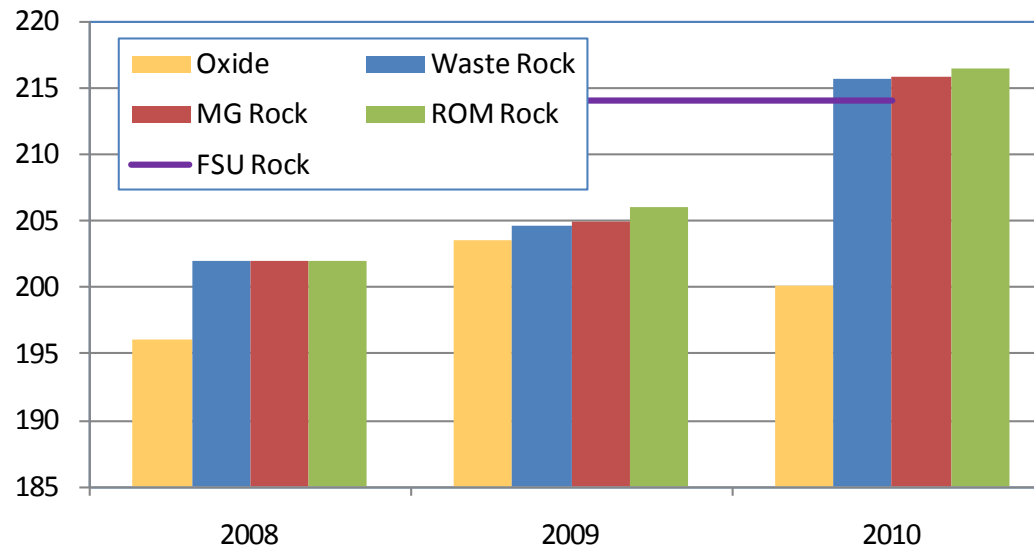
### Wins

- Have increased payloads

### Opportunities

- Investigate lightweight trays for further payload increase

793D Truck Average Payloads (t)



# Newmont Boddington Gold

## Key Gains in Fragmentation



### Challenges

- Limited scope to move beyond current pattern parameters (hole size) due to drill constraints

### Wins

- Improved fragmentation by increasing PF 20% over the past 12 months
- Improved QA/QC
- Trialing electronic detonators (i-kon) for improved fragmentation and improved wall control

### Opportunities

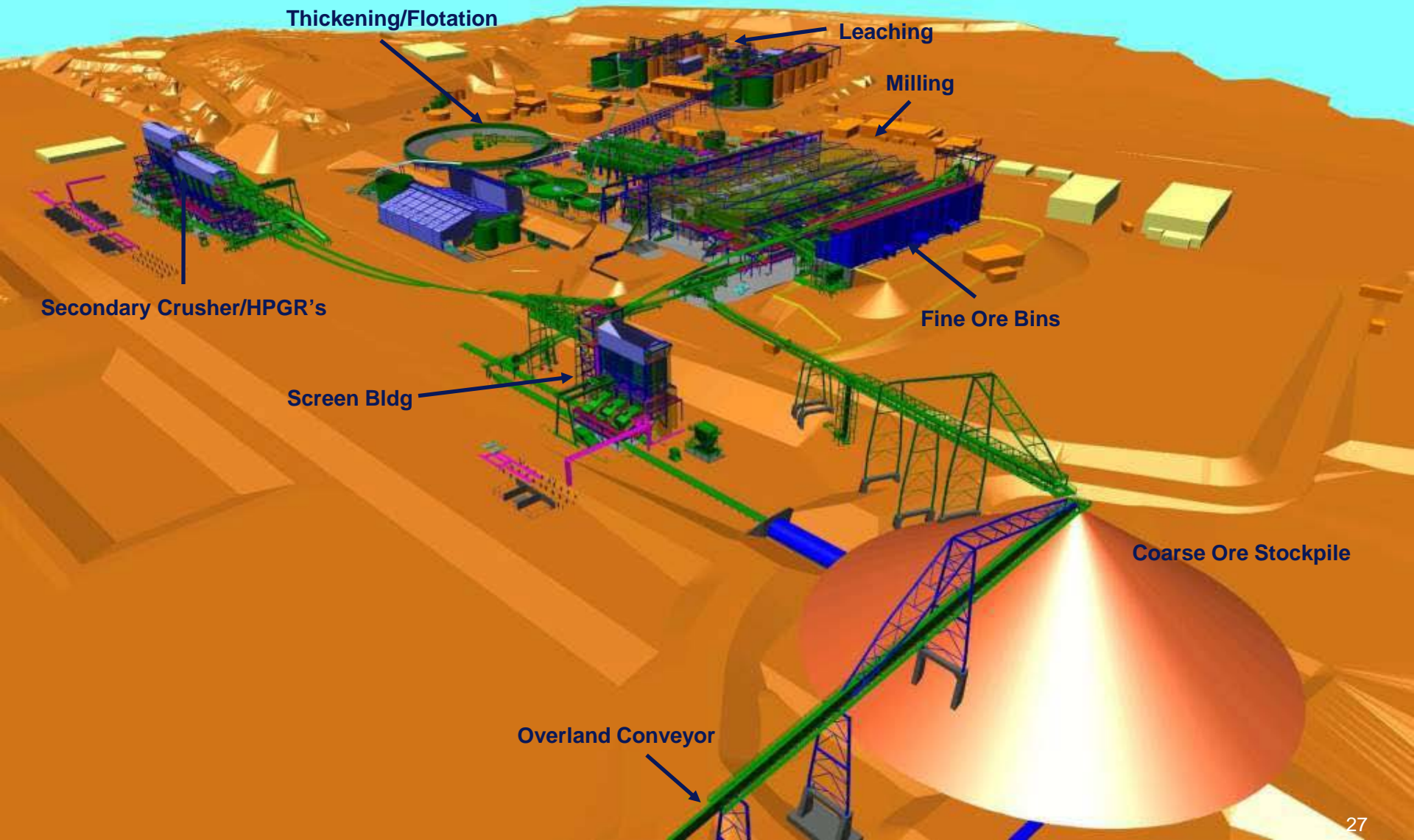
- Larger diameter holes and higher bench heights
- Continue to work with Orica on products and blast designs

A horizontal decorative band with a complex, colorful pattern of geometric and organic shapes, including spirals and zig-zags, in shades of blue, green, yellow, and red.

# Boddington Site Tour

## Processing Plant

# Newmont Boddington Gold Process Plant



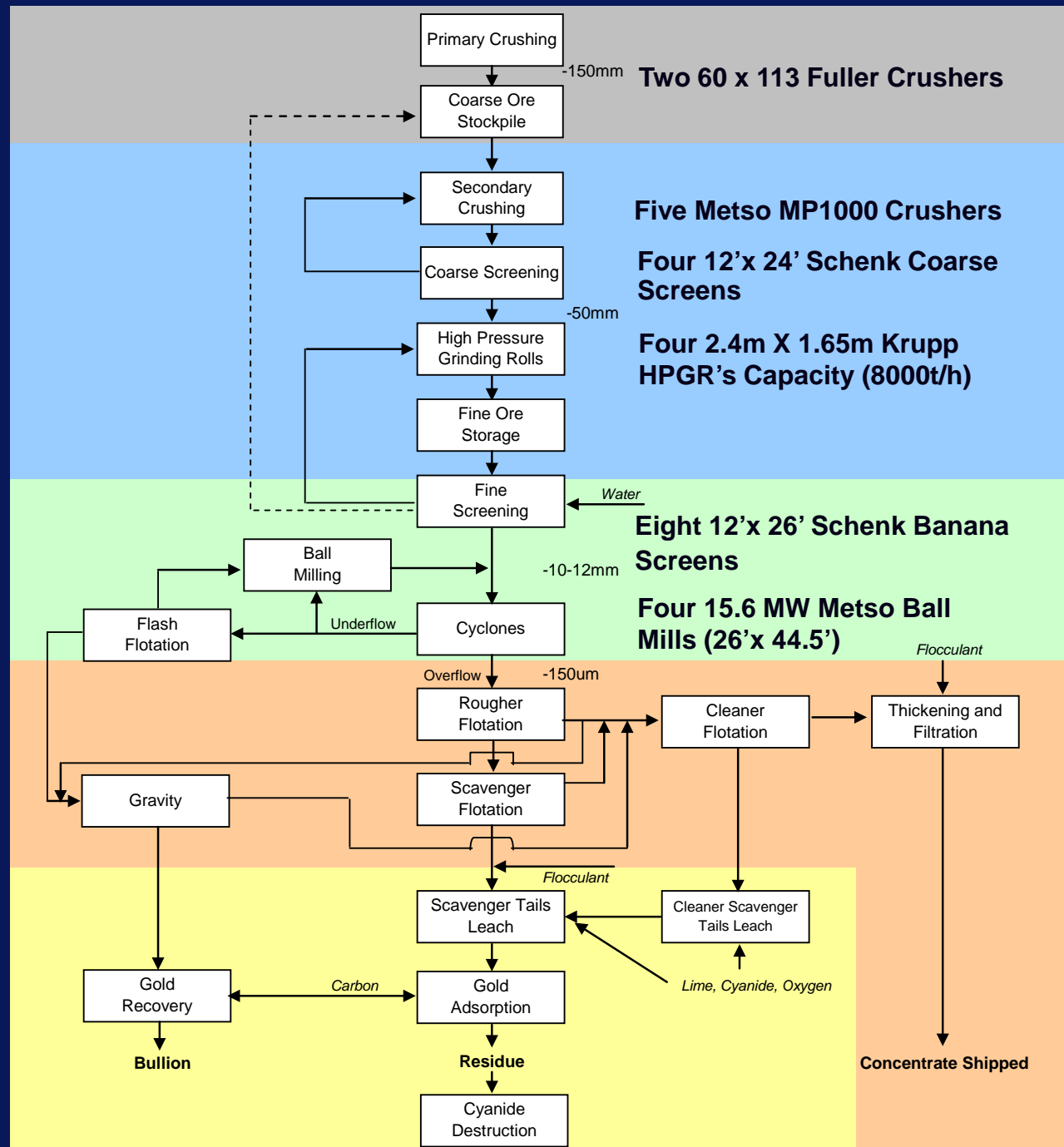
# Coarse Crushing

# Fine Crushing & Screening at Process Plant

# Milling

# Gold & Copper Recovery to Concentrate

# Gold Recovery to Bullion



# Thank you for joining us

John Seaberg  
Vice President, Investor Relations  
(303) 837-5743  
[john.seaberg@newmont.com](mailto:john.seaberg@newmont.com)

Karli Anderson  
Director, Investor Relations  
(303) 837-6049  
[karli.anderson@newmont.com](mailto:karli.anderson@newmont.com)

Monica Brisnehan  
Director, Investor Relations  
(303) 837-5836  
[monica.brisnehan@newmont.com](mailto:monica.brisnehan@newmont.com)

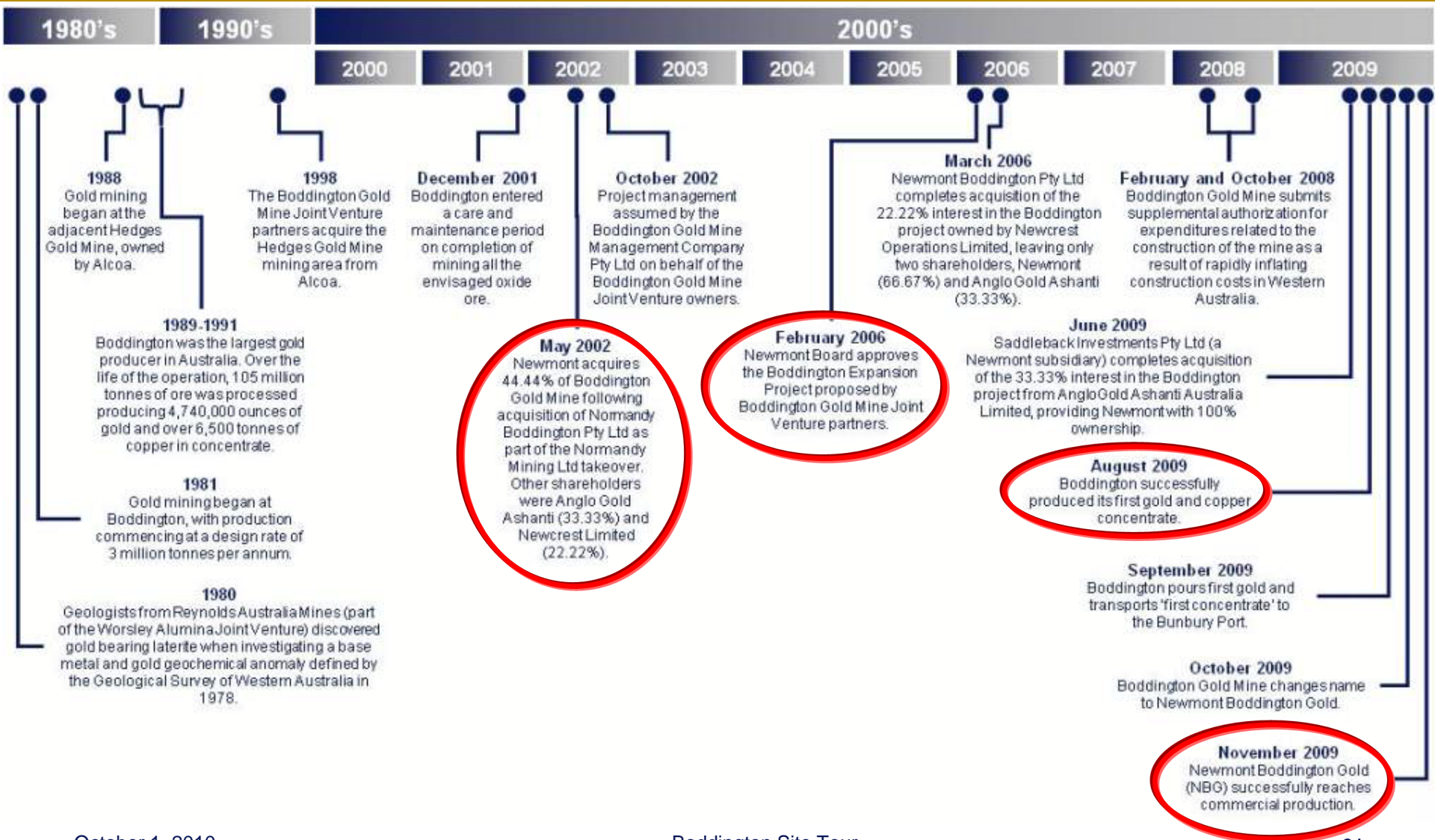


A horizontal decorative border with a collage of indigenous patterns and symbols, including geometric shapes, a face, and a hand, in various colors like blue, red, yellow, and green.

# Boddington Site Tour

## Reference

# Newmont Boddington Gold Historical Timeline



# Cautionary Statement Regarding 2010 Outlook

2010 Outlook projections contained in this presentation (“Outlook”) are considered “forward-looking statements” within the meaning of Section 27A of the Securities Act of 1933, as amended, and Section 21E of the Securities Exchange Act of 1934, as amended which are intended to be covered by the safe harbor created by such sections and other applicable laws. Outlook represents management’s good faith estimates or expectations of future results as of July 28, 2010 and is based upon certain assumptions. Such assumptions, include, but are not limited to: (i) there being no significant change to current geotechnical, metallurgical, hydrological and other physical conditions; (ii) permitting, development, operations and expansion of the Company’s projects being consistent with current expectations and mine plans; (iii) political developments in any jurisdiction in which the Company operates being consistent with its current expectations; (iv) certain exchange rate assumptions for the Australian dollar to the U.S. dollar, as well as other the exchange rates, being approximately consistent with current levels; (v) certain price assumptions for gold, copper and oil; (vi) prices for key supplies being approximately consistent with current levels; and (vii) the accuracy of our current mineral reserve and mineral resource estimates. However, Outlook is subject to risks, uncertainties and other factors, including that such assumptions may prove to be incorrect and other factor referred to on slide, which could cause actual results to differ materially from Outlook. Consequently, Outlook cannot be guaranteed. Investors are cautioned that the Company does not undertake to subsequently reaffirm, provide comfort or otherwise update Outlook to reflect events or circumstances after the date hereof or to reflect the occurrence of unanticipated events. Investors should not assume that any lack of update constitutes a current reaffirmation of Outlook. Continued reliance on Outlook after the date it is first issued is at investors' own risk.

# Reconciliation - Co-Product Costs Applicable to Sales to By-Product Costs Applicable to Sales

Sales and Costs applicable to sales for Boddington are presented in the Condensed Consolidated Financial Statements for both gold and copper due to the significant portion of copper production (approximately 15-20% of total sales based on the latest life-of-mine plan and metal price assumptions). The co-product method allocates costs applicable to sales to each metal based on specifically identifiable costs where applicable and on a relative proportion of sales values for other costs. Management also assesses the performance of the Boddington mine on a by-product basis due to the majority of sales being derived from gold and to determine contingent consideration payments to AngloGold. The by-product method deducts copper sales from costs applicable to sales as shown in the following table:

	Three months ended June 30, 2010		Six months ended June 30, 2010	
	Boddington	Consolidated	Boddington	Consolidated
(\$ million)				
Co-product costs applicable to sales - gold	\$ 113	\$ 760	\$ 193	\$ 1,519
Less copper margin:				
Sales - copper	40	298	79	792
Costs applicable to sales - copper	(25)	(98)	(49)	(214)
Copper margin	15	200	30	578
By-product costs applicable to sales - gold	\$ 98	\$ 560	\$ 163	\$ 941
<b>Costs applicable to sales - gold (\$/oz)</b>				
Co-product	\$ 582	\$ 492	\$ 560	\$ 486
By-product	\$ 503	\$ 362	\$ 474	\$ 301
<b>Gold ounces sold (thousands)</b>	194	1,546	344	3,127

# December 31, 2009 Equity Gold Reserves

Equity Proven, Probable, and Combined Gold Reserves <sup>(1)</sup>														
December 31, 2009											December 31, 2008			
Deposits/Districts by Reporting Unit	Newmont Share	Proven Reserves			Probable Reserves			Proven and Probable Reserves			Metallurgical Recovery	Proven + Probable Reserves		
		Tonnage (000 tons)	Grade (oz/ton)	Gold (000 ozs)	Tonnage (000 tons)	Grade (oz/ton)	Gold (000 ozs)	Tonnage (000 tons)	Grade (oz/ton)	Gold (000 ozs)		Tonnage (000 tons)	Grade (oz/ton)	Gold (000 ozs)
<b>NORTH AMERICA</b>														
Carlin Open Pits, Nevada <sup>(2)</sup>	100%	24,400	0.067	1,640	234,900	0.042	9,760	259,300	0.044	11,400	74%	202,400	0.045	9,050
Carlin Underground, Nevada	100%	4,600	0.307	1,400	5,100	0.315	1,590	9,700	0.311	2,990	88%	11,700	0.313	3,650
Midas, Nevada <sup>(3)</sup>	100%	400	0.480	200	300	0.347	100	700	0.425	300	95%	900	0.436	390
Phoenix, Nevada	100%	0	0	0	285,000	0.020	5,670	285,000	0.020	5,670	73%	239,800	0.021	6,310
Twin Creeks, Nevada	100%	9,300	0.097	900	40,900	0.072	2,950	50,200	0.077	3,850	80%	51,700	0.077	3,960
Turquoise Ridge, Nevada <sup>(4)</sup>	25%	1,100	0.480	550	1,500	0.527	810	2,600	0.507	1,360	92%	2,600	0.500	1,330
Nevada In-Process <sup>(5)</sup>	100%	33,800	0.021	730	0	0	0	33,800	0.021	730	65%	36,000	0.026	940
Nevada Stockpiles <sup>(6)</sup>	100%	27,000	0.079	2,140	2,500	0.028	70	29,500	0.075	2,210	79%	34,200	0.072	2,460
Total Nevada		100,600	0.075	7,560	570,200	0.037	20,950	670,800	0.042	28,510	77%	639,300	0.044	28,090
La Herradura, Mexico	44%	46,100	0.019	900	47,100	0.019	880	93,200	0.019	1,780	66%	76,100	0.025	1,890
<b>TOTAL NORTH AMERICA</b>		<b>146,700</b>	<b>0.058</b>	<b>8,460</b>	<b>617,300</b>	<b>0.035</b>	<b>21,830</b>	<b>764,000</b>	<b>0.040</b>	<b>30,290</b>	<b>77%</b>	<b>715,400</b>	<b>0.044</b>	<b>29,980</b>
<b>SOUTH AMERICA</b>														
Conga, Peru <sup>(7)</sup>	51.35%	0	0	0	317,200	0.019	6,080	317,200	0.019	6,080	79%	317,200	0.019	6,080
Yanacocha Open Pits <sup>(8)</sup>	51.35%	7,800	0.035	270	123,700	0.036	4,480	131,500	0.036	4,750	69%	207,500	0.030	6,150
Yanacocha In-Process <sup>(9)</sup>	51.35%	26,400	0.025	660	0	0	0	26,400	0.025	660	74%	20,800	0.026	530
Total Yanacocha, Peru		34,200	0.027	930	123,700	0.036	4,480	157,900	0.034	5,410	69%	228,300	0.029	6,680
Kori Kollo, Bolivia <sup>(9)</sup>	88%	0	0	0	0	0	0	0	0	0		11,500	0.017	190
La Zanja, Peru <sup>(10)</sup>	46.94%	0	0	0	18,800	0.018	340	18,800	0.018	340	67%	0	0	0
<b>TOTAL SOUTH AMERICA</b>		<b>34,200</b>	<b>0.027</b>	<b>930</b>	<b>459,700</b>	<b>0.024</b>	<b>10,900</b>	<b>493,900</b>	<b>0.024</b>	<b>11,830</b>	<b>74%</b>	<b>557,000</b>	<b>0.023</b>	<b>12,950</b>
<b>ASIA PACIFIC</b>														
Batu Hijau Open Pit <sup>(11)</sup>	52.44%	201,100	0.015	2,970	167,700	0.005	810	368,800	0.010	3,780	76%	348,800	0.011	3,680
Batu Hijau Stockpiles <sup>(6)(11)</sup>	52.44%	0	0	0	193,800	0.004	720	193,800	0.004	720	70%	131,400	0.003	410
Total Batu Hijau, Indonesia	52.44%	201,100	0.015	2,970	361,500	0.004	1,530	562,600	0.008	4,500	75%	480,200	0.009	4,090
Boddington, Western Australia <sup>(12)</sup>	100.00%	184,600	0.025	4,640	781,800	0.021	16,320	966,400	0.022	20,960	82%	583,200	0.023	13,370
Jundee, Western Australia	100%	4,100	0.065	260	3,300	0.273	910	7,400	0.159	1,170	90%	6,300	0.202	1,270
Kalgoorlie Open Pit and Underground	50%	21,200	0.061	1,280	39,600	0.062	2,470	60,800	0.062	3,750	85%	63,700	0.062	3,970
Kalgoorlie Stockpiles <sup>(6)</sup>	50%	14,300	0.031	440	0	0	0	14,300	0.031	440	78%	14,400	0.031	450
Total Kalgoorlie, Western Australia	50%	35,500	0.049	1,720	39,600	0.062	2,470	75,100	0.056	4,190	84%	78,100	0.056	4,420
Tanami, Northern Territories	100%	5,200	0.160	830	7,900	0.102	810	13,100	0.125	1,640	96%	11,500	0.129	1,480
Waihi, New Zealand	100%	0	0	0	4,000	0.101	410	4,000	0.101	410	90%	2,900	0.124	360
<b>TOTAL ASIA PACIFIC</b>		<b>430,500</b>	<b>0.024</b>	<b>10,420</b>	<b>1,198,100</b>	<b>0.019</b>	<b>22,450</b>	<b>1,628,600</b>	<b>0.020</b>	<b>32,870</b>	<b>82%</b>	<b>1,162,200</b>	<b>0.022</b>	<b>24,990</b>
<b>AFRICA</b>														
Ahafo Open Pits <sup>(13)</sup>	100%	0	0	0	128,700	0.068	8,810	128,700	0.068	8,810	87%			
Ahafo Stockpiles <sup>(6)</sup>	100%	9,300	0.034	320	0	0	0	9,300	0.034	320	87%			
Total Ahafo, Ghana	100%	9,300	0.034	320	128,700	0.068	8,810	138,000	0.066	9,130	87%	125,100	0.075	9,380
Akyem, Ghana <sup>(14)</sup>	100%	0	0	0	147,200	0.052	7,660	147,200	0.052	7,660	89%	147,200	0.052	7,660
<b>TOTAL AFRICA</b>		<b>9,300</b>	<b>0.034</b>	<b>320</b>	<b>275,900</b>	<b>0.060</b>	<b>16,470</b>	<b>285,200</b>	<b>0.059</b>	<b>16,790</b>	<b>88%</b>	<b>272,300</b>	<b>0.063</b>	<b>17,040</b>
<b>TOTAL NEWMONT WORLDWIDE</b>		<b>620,700</b>	<b>0.032</b>	<b>20,130</b>	<b>2,551,000</b>	<b>0.028</b>	<b>71,650</b>	<b>3,171,700</b>	<b>0.029</b>	<b>91,780</b>	<b>80%</b>	<b>2,706,900</b>	<b>0.031</b>	<b>84,960</b>

- (1) Reserves are calculated at a gold price of US\$800, A\$1000, or NZ\$1,200 per ounce unless otherwise noted. 2008 reserves were calculated at a gold price of US\$725, A\$850, or NZ\$1,000 per ounce unless otherwise noted. Tonnage amounts have been rounded to the nearest 100,000 unless they are less than 50,000, and gold ounces have been rounded to the nearest ounce.
- (2) Includes undeveloped reserves at the Emigrant deposits for combined total undeveloped reserves of 1.2 million ounces.
- (3) Also contains reserves of 4.6 million ounces of silver with a metallurgical recovery of 88%.
- (4) Reserve estimates provided by Barrick, the operator of the Turquoise Ridge Joint Venture.
- (5) In-process material is the material on leach pads at the end of each year from which gold remains to be recovered. In-process material reserves are reported separately where tonnage or contained ounces are greater than 5% of the total site-reported reserves and contained ounces are greater than 100,000.
- (6) Stockpiles are comprised primarily of material that has been set aside to allow processing of higher grade material in the mills. Stockpiles increase or decrease depending on current mine plans. Stockpile reserves are reported separately where tonnage or contained ounces are greater than 5% of the total site-reported reserves and contained ounces are greater than 100,000.
- (7) Deposit is currently undeveloped.
- (8) Reserves include the currently undeveloped deposit at Tapado Oeste (formerly called Corimayo), which contains undeveloped reserves of 1.2 million equity ounces.
- (9) Newmont divested its interest in Kori Kollo in July 2009.
- (10) Reserve estimates were provided by Buenaventura, the operator of the La Zanja project.
- (11) Percentage reflects Newmont's economic interest at December 31, 2009. In November and December 2009 our economic interest increased from 45% to 52.44% as a result of transactions with a noncontrolling partner, partially offset by divestiture required under the Contract of Work.
- (12) Newmont acquired the remaining 33.33% of Boddington from AngloGold in June 2009.
- (13) Includes undeveloped reserves at Amoma, Yamfo South, Yamfo Central, Techire West, Subenso South, Subenso North, Yamfo Northeast, and Susuan totaling 3.7 million ounces.
- (14) Deposit is undeveloped.

# December 31, 2009 Equity Copper Reserves

## Equity Copper Reserves<sup>(1)</sup> December 31, 2009

Deposits/Districts	Newmont Share										December 31, 2008			
		Proven Reserves			Probable Reserves			Proven + Probable Reserves			Proven + Probable Reserve			
		Tonnage (000 tons)	Grade (Cu%)	Copper (million pounds)	Tonnage (000 tons)	Grade (Cu%)	Copper (million pounds)	Tonnage (000 tons)	Grade (Cu%)	Copper (million pounds)	Metallurgical Recovery	Tonnage (000 tons)	Grade (Cu%)	Copper (million pounds)
<b>NORTH AMERICA</b>														
Phoenix, Nevada	100%	0		0	287,500	0.16%	900	287,500	0.16%	900	61%	302,000	0.15%	890
<b>TOTAL NORTH AMERICA</b>		0		0	287,500	0.16%	900	287,500	0.16%	900	61%	302,000	0.15%	890
<b>SOUTH AMERICA</b>														
Conga, Peru <sup>(2)</sup>	51.35%	0		0	317,200	0.26%	1,660	317,200	0.26%	1,660	85%	317,200	0.26%	1,660
<b>TOTAL SOUTH AMERICA</b>		0		0	317,200	0.26%	1,660	317,200	0.26%	1,660	85%	317,200	0.26%	1,660
<b>ASIA PACIFIC</b>														
Batu Hijau <sup>(3)</sup>	52.44%	201,100	0.51%	2,070	167,700	0.32%	1,060	368,800	0.42%	3,130	77%	348,800	0.44%	3,060
Batu Hijau, Stockpiles <sup>(3)(4)</sup>	52.44%	0		0	193,800	0.36%	1,390	193,800	0.36%	1,390	66%	131,400	0.34%	890
Batu Hijau, Indonesia	52.44%	201,100	0.51%	2,070	361,500	0.34%	2,450	562,600	0.40%	4,520	74%	480,200	0.41%	3,950
Boddington, Western Australia <sup>(5)</sup>	100.00%	184,600	0.11%	400	781,800	0.10%	1,640	966,400	0.11%	2,040	84%	583,200	0.11%	1,280
<b>TOTAL ASIA PACIFIC</b>		385,700	0.32%	2,470	1,143,300	0.18%	4,090	1,529,000	0.21%	6,560	77%	1,063,400	0.25%	5,230
<b>TOTAL NEWMONT WORLDWIDE</b>		385,700	0.32%	2,470	1,748,000	0.19%	6,650	2,133,700	0.21%	9,120	77%	1,682,600	0.23%	7,780

<sup>(1)</sup> Reserves are calculated at US\$2.00 or A\$2.40 per pound copper price unless otherwise noted. 2008 reserves were also calculated at US\$2.00 or A\$2.40 per pound copper price unless otherwise noted. Tonnage amounts have been rounded to the nearest 100,000 and pounds have been rounded to the nearest 10 million.

<sup>(2)</sup> Deposit is undeveloped.

<sup>(3)</sup> Percentage reflects Newmont's economic interest at December 31, 2009. In November and December 2009 our economic interest increased from 45% to 52.44% as a result of transactions with a noncontrolling partner, partially offset by divestiture required under the Contract of Work.

<sup>(4)</sup> Stockpiles are comprised primarily of material that has been set aside to allow processing of higher grade material. Stockpiles increase or decrease depending on current mine plans. Stockpiles are reported separately where tonnage or contained metal are greater than 5% of the total site reported reserves.

<sup>(5)</sup> Newmont acquired the remaining 33.33% of Boddington from AngloGold in June 2009.

# Non-Reserve Mineralization Supplemental Information

## Equity Gold Mineralized Material Not in Reserves<sup>(1)(2)</sup>

December 31, 2009									
Deposits/Districts	Newmont Share	Measured Material		Indicated Material		Measured + Indicated Material		Inferred Material	
		Tonnage (000 tons)	Grade (oz/ton)	Tonnage (000 tons)	Grade (oz/ton)	Tonnage (000 tons)	Grade (oz/ton)	Tonnage (000 tons)	Grade (oz/ton)
<b>NORTH AMERICA</b>									
Carlin Trend Open Pit, Nevada	100%	2,600	0.027	26,200	0.020	28,800	0.021	10,400	0.034
Carlin Trend Underground, Nevada	100%	700	0.189	110	0.153	810	0.18	7,400	0.289
Lone Tree Complex, Nevada	100%	0		4,200	0.022	4,200	0.022	0	
Midas, Nevada	100%	0	0.205	100	0.188	100	0.193	100	0.248
Phoenix, Nevada	100%	0	0.000	158,400	0.013	158,400	0.013	35,400	0.015
Twin Creeks, Nevada	100%	3,400	0.097	31,600	0.045	35,000	0.050	11,300	0.018
Turquoise Ridge <sup>(3)</sup> , Nevada	25%	300	0.412	300	0.452	600	0.431	1,300	0.456
Nevada Stockpiles <sup>(4)</sup> , Nevada	100%	10,700	0.060			10,700	0.060	2,300	0.043
Total Nevada		17,700	0.074	220,910	0.020	238,610	0.024	68,200	0.058
La Herradura, Mexico	44%	6,500	0.017	7,800	0.016	14,300	0.016	20,500	0.019
<b>TOTAL NORTH AMERICA</b>		<b>24,200</b>	<b>0.058</b>	<b>228,710</b>	<b>0.019</b>	<b>252,910</b>	<b>0.023</b>	<b>88,700</b>	<b>0.049</b>
<b>SOUTH AMERICA</b>									
Conga, Peru	51.35%	0		58,000	0.013	58,000	0.013	79,000	0.011
Yanacocha, Peru	51.35%	1,300	0.017	157,800	0.020	159,100	0.020	25,800	0.019
La Zanja <sup>(5)</sup> , Peru	46.94%	0		0	0.000	0	0.000	4,000	0.016
<b>TOTAL SOUTH AMERICA</b>		<b>1,300</b>	<b>0.017</b>	<b>215,800</b>	<b>0.018</b>	<b>217,100</b>	<b>0.018</b>	<b>108,800</b>	<b>0.013</b>
<b>ASIA PACIFIC</b>									
Batu Hijau <sup>(6)</sup> , Indonesia	52.44%	25,400	0.017	148,400	0.007	173,800	0.008	81,300	0.002
Boddington, Western Australia <sup>(7)</sup>	100%	20,600	0.010	344,200	0.015	364,800	0.014	292,900	0.016
Jundee, Western Australia	100%	0		200	0.045	200	0.045	3,800	0.068
Kalgoorlie, Western Australia	50%	2,300	0.059	4,100	0.054	6,400	0.056	1,600	0.136
Tanami, Northern Territory	100%	300	0.099	1,100	0.082	1,400	0.086	8,100	0.152
Waihi, New Zealand	100%	0		1,200	0.206	1,200	0.206	300	0.146
<b>TOTAL ASIA PACIFIC</b>		<b>48,600</b>	<b>0.016</b>	<b>499,200</b>	<b>0.013</b>	<b>547,800</b>	<b>0.013</b>	<b>388,000</b>	<b>0.017</b>
<b>AFRICA</b>									
Ahafo, Ghana	100%	0		97,800	0.050	97,800	0.050	26,200	0.104
Akyem, Ghana	100%	0		11,600	0.048	11,600	0.048	4,600	0.047
<b>TOTAL AFRICA</b>		<b>0</b>		<b>109,400</b>	<b>0.050</b>	<b>109,400</b>	<b>0.050</b>	<b>30,800</b>	<b>0.095</b>
<b>TOTAL NEWMONT WORLDWIDE</b>		<b>74,100</b>	<b>0.030</b>	<b>1,053,110</b>	<b>0.019</b>	<b>1,127,210</b>	<b>0.020</b>	<b>616,300</b>	<b>0.025</b>

(1) Mineralized material is reported exclusive of reserves.

(2) Mineralized Material calculated at a gold price of US\$950, A\$1,200, or NZ\$1,400 per ounce unless otherwise noted. 2008 Mineralized material was calculated at a gold price of US\$850, A\$1,000, or NZ\$1,175 per ounce. Tonnage amounts have been rounded to the nearest 100,000.

(3) Mineralized material estimates were provided by Barrick, the operator of the Turquoise Ridge Joint Venture.

(4) Stockpiles are comprised primarily of material that has been set aside to allow processing of higher grade material in the mills. Stockpiles increase or decrease depending on current mine plans.

(5) Mineralized material estimates were provided by Buenaventura, the operator of the La Zanja Project.

(6) Percentage reflects Newmont's economic interest at December 31, 2009. In November and December 2009 our economic interest increased from 45% to 52.44% as a result of transactions with a noncontrolling partner, partially offset by divestiture required under the Contract of Work.

(7) Newmont acquired the remaining 33.33% of Boddington from AngloGold in June 2009.

# Non-Reserve Mineralization Supplemental Information (continued)

## Equity Copper Mineralized Material Not in Reserves<sup>(1)(2)</sup>

December 31, 2009									
Deposits/Districts	Newmont Share	Measured Material		Indicated Material		Measured + Indicated Material		Inferred Material	
		Tonnage (000 tons)	Grade (Cu%)	Tonnage (000 tons)	Grade (Cu%)	Tonnage (000 tons)	Grade (Cu%)	Tonnage (000 tons)	Grade (Cu%)
<b>NORTH AMERICA</b>									
Phoenix, Nevada	100%	0	0.00%	199,687	0.18%	199,687	0.18%	91,815	0.23%
<b>TOTAL NORTH AMERICA</b>				<b>199,687</b>	<b>0.18%</b>	<b>199,687</b>	<b>0.18%</b>	<b>91,815</b>	<b>0.23%</b>
<b>SOUTH AMERICA</b>									
Conga, Peru	51.35%	0	0.00%	58,000	0.18%	58,000	0.18%	79,000	0.17%
<b>TOTAL SOUTH AMERICA</b>				<b>58,000</b>	<b>0.18%</b>	<b>58,000</b>	<b>0.18%</b>	<b>79,000</b>	<b>0.17%</b>
<b>ASIA PACIFIC</b>									
Batu Hijau, Indonesia <sup>(3)</sup>	52.44%	25,400	0.42%	148,400	0.31%	173,800	0.32%	81,300	0.22%
Boddington, Western Australia <sup>(4)</sup>	100.00%	20,600	0.08%	344,200	0.10%	364,800	0.09%	292,900	0.10%
<b>TOTAL ASIA PACIFIC</b>		<b>46,000</b>	<b>0.27%</b>	<b>492,600</b>	<b>0.16%</b>	<b>538,600</b>	<b>0.17%</b>	<b>374,200</b>	<b>0.13%</b>
<b>TOTAL NEWMONT WORLDWIDE</b>		<b>46,000</b>	<b>0.27%</b>	<b>750,287</b>	<b>0.17%</b>	<b>796,287</b>	<b>0.17%</b>	<b>545,015</b>	<b>0.15%</b>

(1) Mineralized material is reported exclusive of reserves.

(2) Mineralized material calculated at a copper price of US\$2.50 or A\$3.00 per pound unless otherwise noted. 2008 mineralized material was also calculated at a copper price of US\$2.50 or A\$3.00 per pound. Tonnage amounts have been rounded to the nearest 100,000.

(3) Percentage reflects Newmont's economic interest at December 31, 2009. In November and December 2009 our economic interest increased from 45% to 52.44% as a result of transactions with a noncontrolling partner, partially offset by divestiture required under the Contract of Work.

(4) Newmont acquired the remaining 33.33% of Boddington from AngloGold in June 2009.

# Cautionary Statement Regarding Reporting of Reserves and NRM

“Reserve” and “non-reserve mineralization” or “NRM” data referenced in this presentation are the Company’s estimates as of December 31, 2009. Such estimates are subject to many risks and highly speculative, and may not be converted to future reserves of the Company.

The term “reserve” means that part of a mineral deposit that can be economically and legally extracted or produced at the time of the reserve determination. The term “economically,” as used in this definition, means that profitable extraction or production has been established or analytically demonstrated in a full feasibility study to be viable and justifiable under reasonable investment and market assumptions. The term “legally,” as used in this definition, does not imply that all permits needed for mining and processing have been obtained or that other legal issues have been completely resolved. However, for a reserve to exist, Newmont must have a justifiable expectation, based on applicable laws and regulations, that issuance of permits or resolution of legal issues necessary for mining and processing at a particular deposit will be accomplished in the ordinary course and in a timeframe consistent with Newmont’s current mine plans. Reserves in this document are aggregated from the Proven and Probable classes.

The term “non-reserve mineralization” or “NRM” refers to Measured, Indicated and/or Inferred materials, which are exclusive of reserves. Please see Slides 115 - 116 of the Company’s Investor Day Presentation, furnished to the SEC on Form 8-K on May 27, 2010, for Newmont’s 2009 report on non-reserve mineralization. Newmont has determined that such non-reserve mineralization would be substantively the same as those prepared using the Guidelines established by the Society of Mining, Metallurgy and Exploration.

The term “potential” refers to the aggregate of potential ore-grade material, including Proven and Probable reserves, Measured, Indicated and Inferred non-reserve mineralization, in addition to other potential ore-grade materials that have less certainty of conversion to reserves.

References to “equity ounces” or “equity pounds” mean that portion of gold or copper produced, sold or included in proven and probable reserves that is attributable to our ownership or economic interest.

Ian Douglas, Newmont’s Group Executive of Reserves and Geostatistics, is the qualified person responsible for the preparation of the Reserve and non-reserve mineralization estimates in this presentation. The reserves disclosed in this presentation have been prepared in compliance with Industry Guide 7 published by the SEC. Non-reserve mineralization and potential has not been prepared in accordance with Industry Guide 7. Estimates of non-reserve mineralization and potential are subject to further exploration and development, are subject to many risks and highly speculative, and may not be converted to future reserves of the Company. In addition, our current or future reserves and exploration and development projects may not result in new mineral producing operations. Even if significant mineralization is discovered and converted to reserves, it will likely take many years from the initial phases of exploration to development and ultimately to production, during which time the economic feasibility of production may change. For a description of the key assumptions, parameters and methods used to estimate mineral reserves and mineralized material on Newmont’s material properties, as well as a general discussion of the extent to which the estimates may be affected by any known environmental, permitting, legal, title, taxation, socio-political, marketing or other relevant factors, please see Newmont’s most recent Annual Report on Form 10-K, filed on February 25, 2010, and other SEC filings.