

Paydirt's Gold Conference 2010: Taking Higher Ground

15 March 2010

Philip Stephenson
Regional Group Executive Operations

Cautionary Statement

This presentation contains “forward-looking statements” within the meaning of Section 27A of the Securities Act of 1933, as amended, and Section 21E of the Securities Exchange Act of 1934, as amended, which statements are intended to be covered by the safe harbor created by such sections and other applicable laws. Such forward-looking statements include, without limitation, (i) estimates of future mineral production and sales; (ii) estimates of future costs applicable to sales, other expenses and taxes, for specific operations and on a consolidated basis; (iii) estimates of future capital expenditures, construction, production or closure activities; (iv) statements regarding future exploration expenditures, results and reserves; (v) statements regarding future availability of capital or commodity and currency markets; (vi) statements regarding potential cost savings, productivity, financial or operating performance; (vii) expectations regarding the timing of acquisitions or divestitures; and (viii) expectations regarding the ramp-up, design, mine life, production and costs applicable to sales and exploration potential of the Akyem or Subika Expansion project, Boddington operation and other projects and operations. Where the Company expresses or implies an expectation or belief as to future events or results, such expectation or belief is expressed in good faith and believed to have a reasonable basis. However, forward-looking statements are subject to risks, uncertainties and other factors, which could cause actual results to differ materially from future results expressed, projected or implied by such forward-looking statements. Such risks include, but are not limited to, gold and other metals price volatility, currency fluctuations, increased production costs and variances in ore grade or recovery rates from those assumed in mining plans, political and operational risks in the countries in which we operate, and governmental regulation and judicial outcomes. For a more detailed discussion of such risks and other factors, see the Company’s 2008 Annual Report on Form 10-K, filed on February 19, 2009, with the Securities and Exchange Commission, and its other SEC filings. The Company does not undertake any obligation to release publicly revisions to any “forward-looking statement,” to reflect events or circumstances after the date of this news release, or to reflect the occurrence of unanticipated events, except as may be required under applicable securities laws.

Newmont Overview

- Founded in 1921 by William Boyce Thompson
- Listed on the NYSE since 1940
- Market Capitalization: ~US\$24 B
- Only Senior Gold Stock in the S&P 500 and Fortune 500
- Liquid Gold Stock with ~8 million shares traded daily
- First gold mining stock included in the Dow Jones Sustainability Index



Newmont Tanami Operations 2009

Newmont Overview

2009 Equity Gold Sales:

5.3 Moz

2009 Gold CAS:

\$US417 per oz

2009 Reserves:

92 Moz



Asia Pacific Overview

Description of Region

Boddington

100% owned project expected to provide steady production base of ~1Moz a year for the first 5 years

Kalgoorlie

Joint venture with Barrick, produced 337koz of gold (50% equity basis) in 2009

Jundee

100% owned operation, produced 410koz of gold in 2009

Tanami

100% owned operation, produced 289koz of gold in 2009

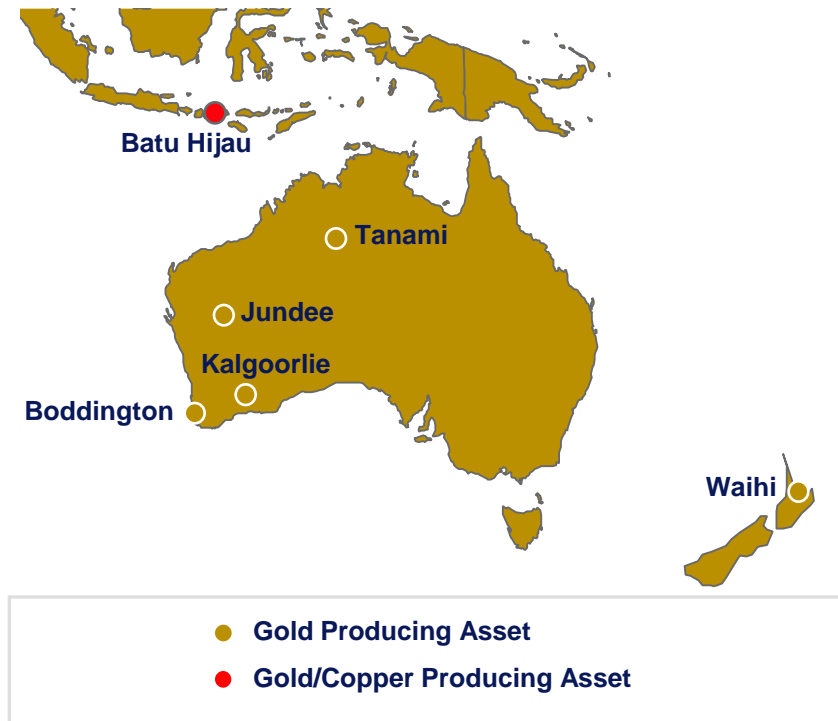
Waihi

Located in New Zealand, sold 113koz of gold in 2009

Batu Hijau

Large scale copper/gold mine in Indonesia, produced 494Mlb copper and 560koz gold (100% basis) in 2009

Location of Operations

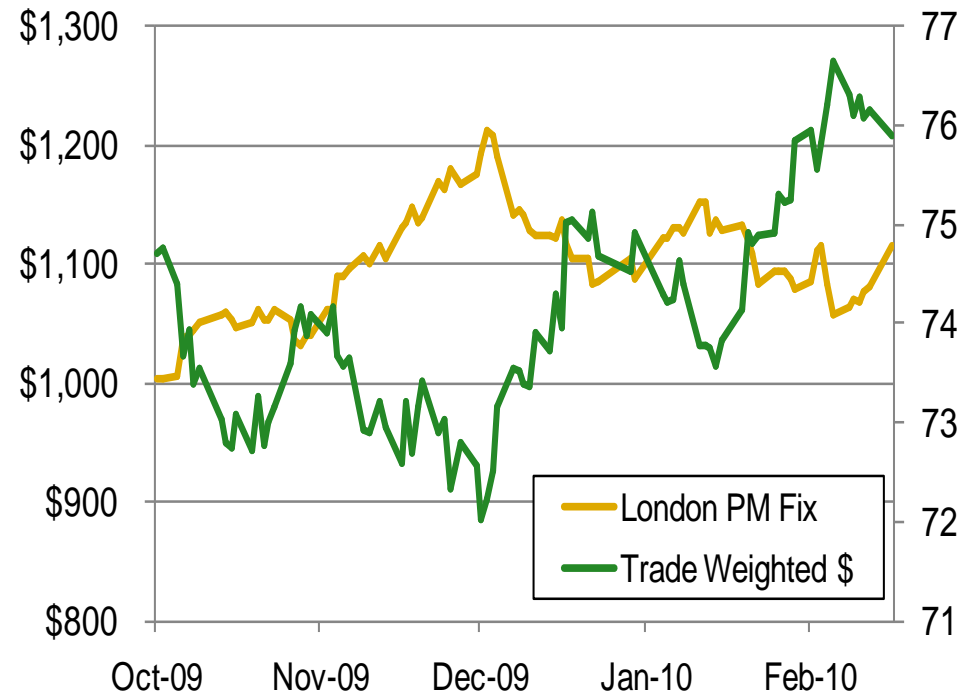


2009 Performance Highlights

(In millions except when stated otherwise)	2009	2008	% Change
Revenue	\$7,705	\$6,124	26%
Net Cash from Continuing Operations	\$2,914	\$1,397	109%
Equity Gold Ounces Sold (thousands)	5,259	5,184	1%
Gold CAS (per ounce)	\$417	\$436	-4%
Gold Operating Margin (per ounce)	\$560	\$438	28%
Gold Reserves (million ounces)	92	85	8%
Average Realized Gold Price (per ounce)	\$977	\$874	12%
Equity Copper Pounds Sold (millions)	226	130	74%
Copper CAS (per pound)	\$0.64	\$1.38	-54%
Copper Operating Margin (per pound)	\$1.78	\$0.90	98%

Gold Global Financial Markets

Gold Price vs. USD

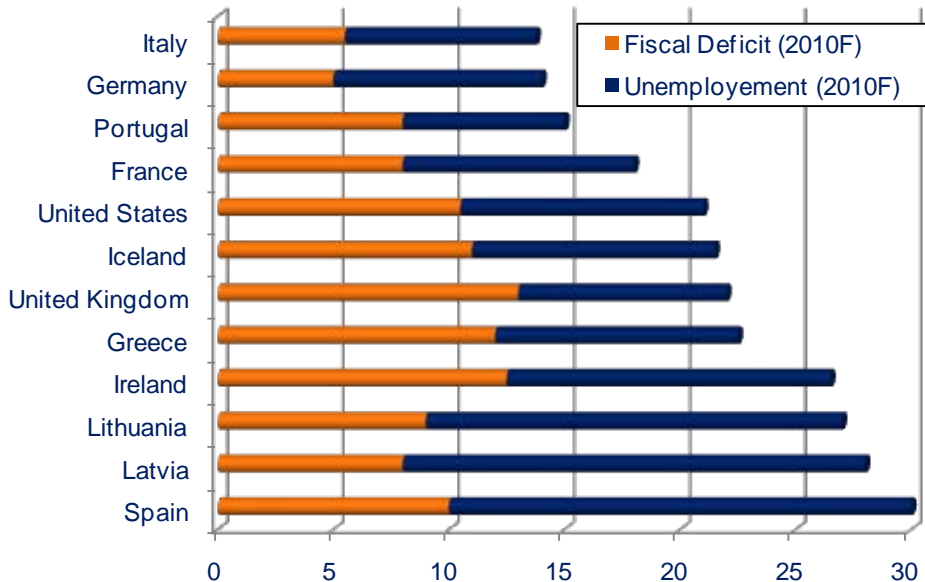
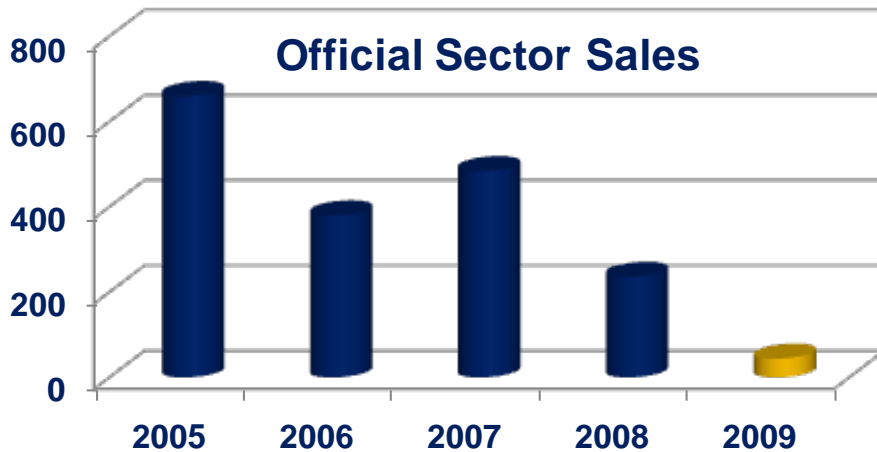


World Gold ETF Holdings



Gold

Support in the Short and Long-term



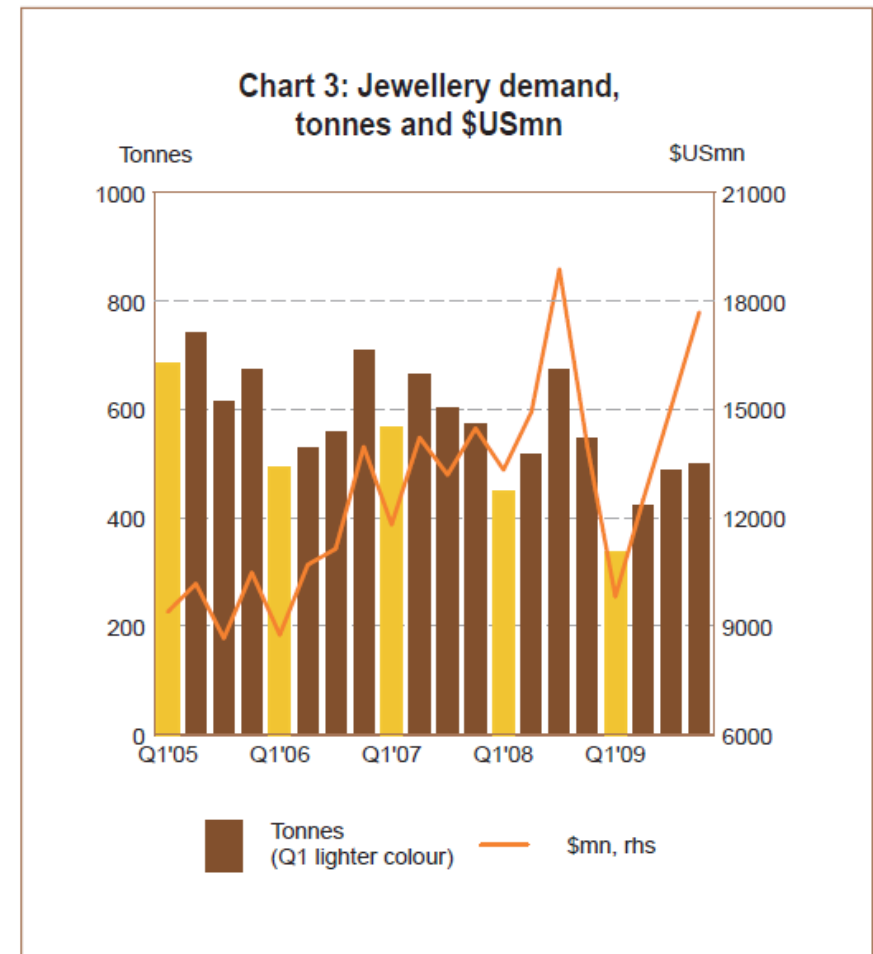
Sources: GFMS, Moody's Investor Services

Paydirt's Gold Conference 2010

- **Central Bank sales declined 90% in 2009 with 3 quarters of net buying**
- **Rise in investment demand:**
 - Hedge against decline of fiat currencies
 - China → 20% increase in investment demand in 2009
 - Investment surpassed jewellery demand in 2009 for the first time in over three decades
- **Shift from bonds to gold:**
 - Rebalancing of global reserve allocations
 - Diversification from U.S. Treasuries and sovereign debt
- **Uncertainty surrounding the health of the world economy**

Risks in the Short and Long-term

- **Jewellery demand down:**
 - Demand down 8% in 4Q09 from 4Q08
 - Scrap metal supply is rising
- **Financial speculation has pushed metal prices higher:**
 - Stronger U.S. Dollar
 - Increased stability in global economies
 - Tightening of monetary policy
 - ETF demand has leveled off with gold price above \$1,000/oz



Source: GFMS, WGC

2010 Operating Outlook

Region	Prod (000 oz)	% of Total	CAS (\$/oz)
Asia Pacific	2,250 – 2,460	44%	\$400 – \$440
North America	1,740 – 1,885	33%	\$575 – \$615
South America	750 – 810	14%	\$360 – \$400
Africa	460 – 500	9%	\$515 – \$555
Total Gold	5,300 – 5,500		\$450 – \$480
Total with Boddington on a by-product basis			\$440 – \$470
Total with Boddington and Batu on a by-product basis			\$310 – \$340

Boddington Ramp-Up

Status

- First gold poured on 29 September 2009
- First concentrate shipped on 30 September 2009
- Commercial production announced on 19 November 2009
- Recoveries for gold and copper above design expectations
- Ramp-up at ~70% and climbing
- Anticipate completion of ramp-up to full capacity in late 2010
- Pursuing further development of this under explored and highly prospective greenstone belt



Boddington

The mining process

Global Growth Strategy



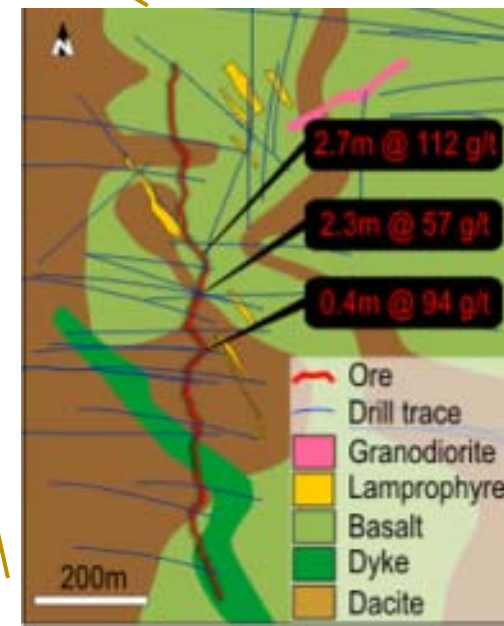
Growth in APAC Near Mine Exploration

Australia:

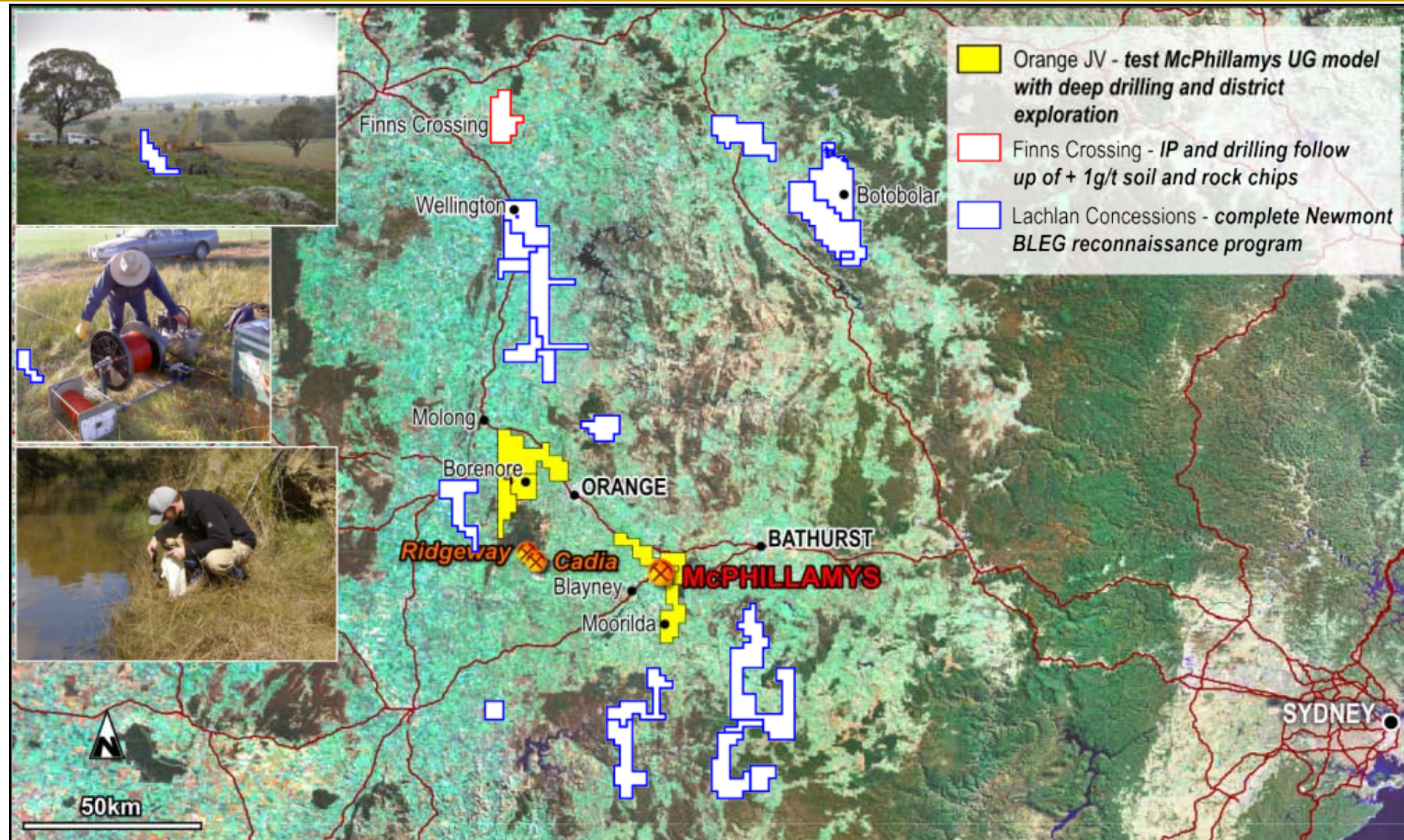
- Highly prospective districts with close proximity to existing infrastructure
- AAA rated country
- Extend production life at KCGM to 2021 with Golden Pike cutback
- Continue pursuing extensions & discoveries at Tanami (e.g. Auron), Waihi and Jundee (e.g. Gateway)
- Near-mine program added 2.5Moz in 2009

Jundee Gateway Example:

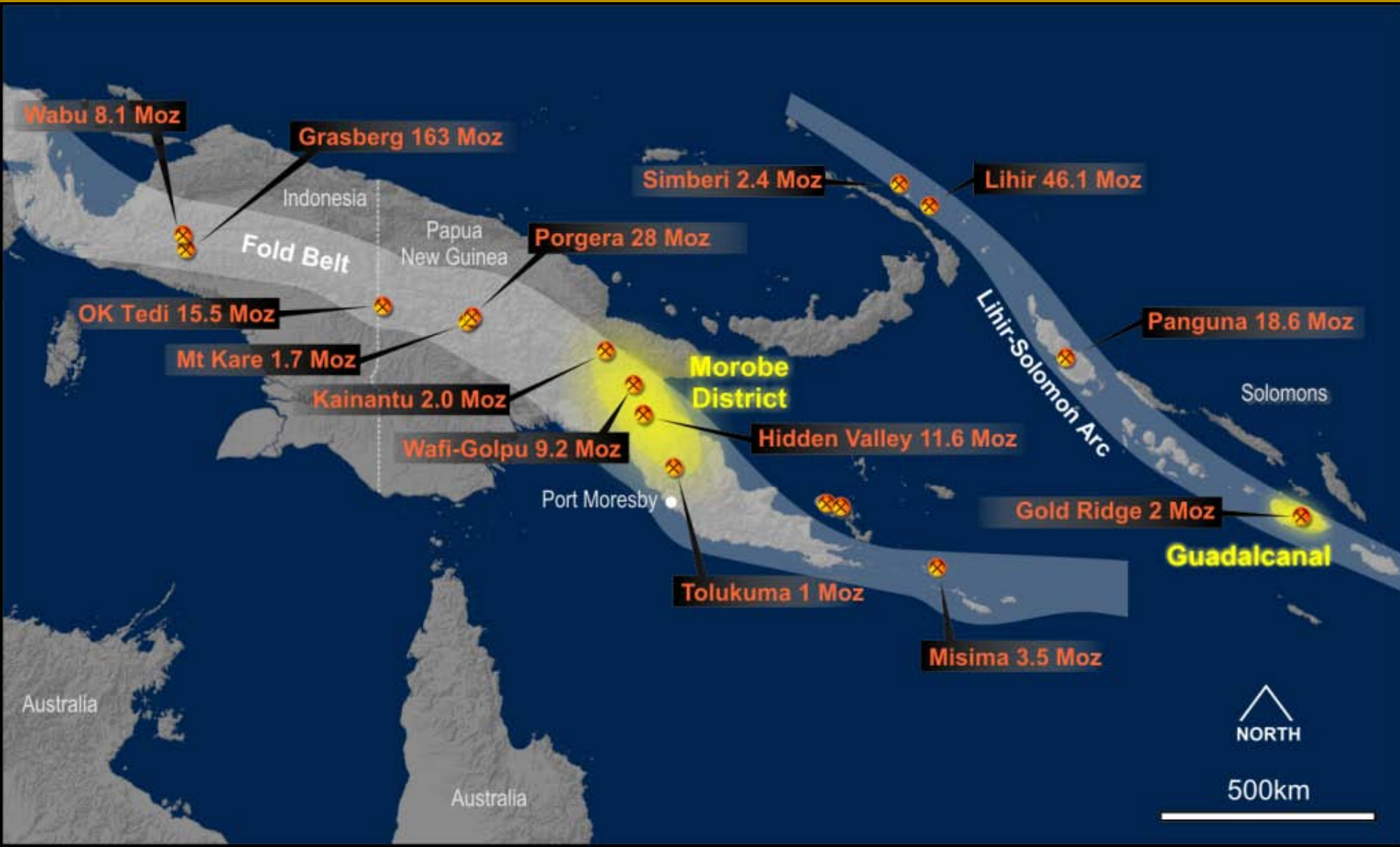
- New discovery in Jundee district
- Stage 3 development in progress
- Excellent drilling results to date
- Ore body open at depth and on strike



Growth in APAC NSW Projects

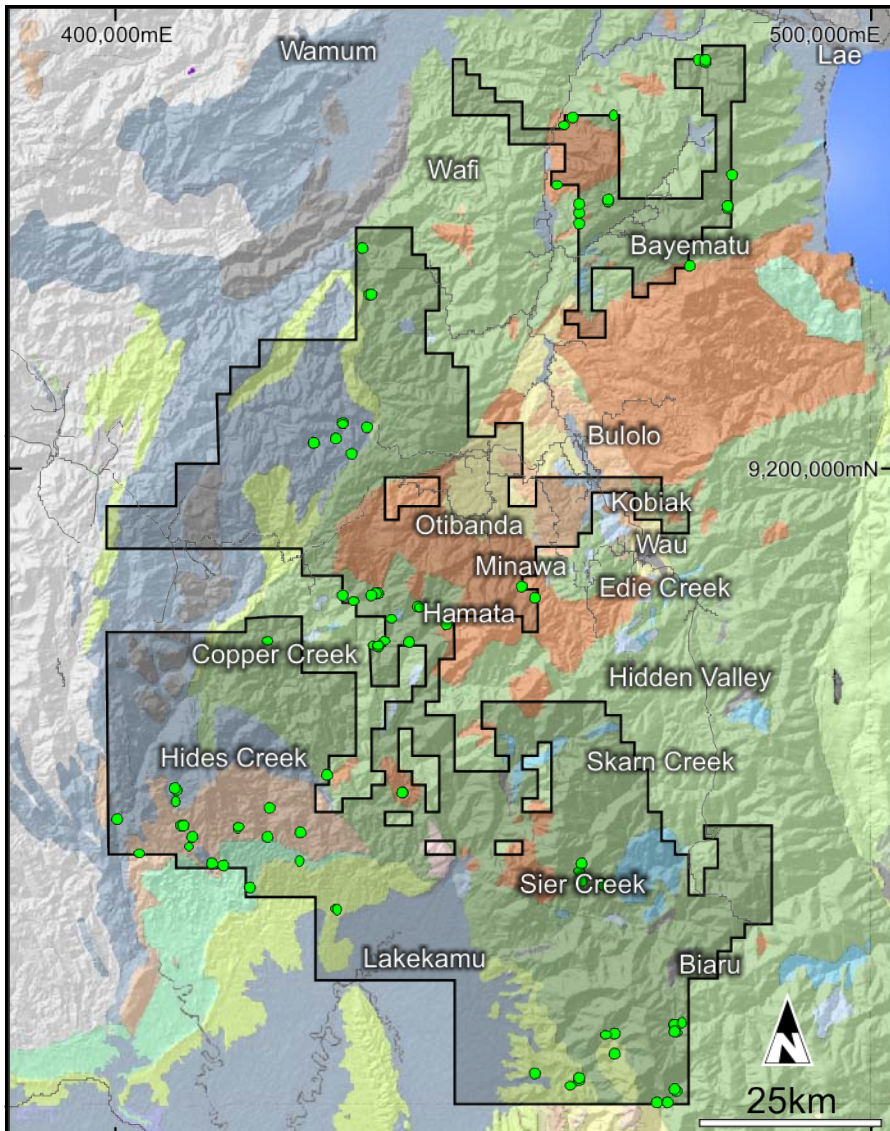


Growth in APAC Solomons and PNG



Growth in APAC

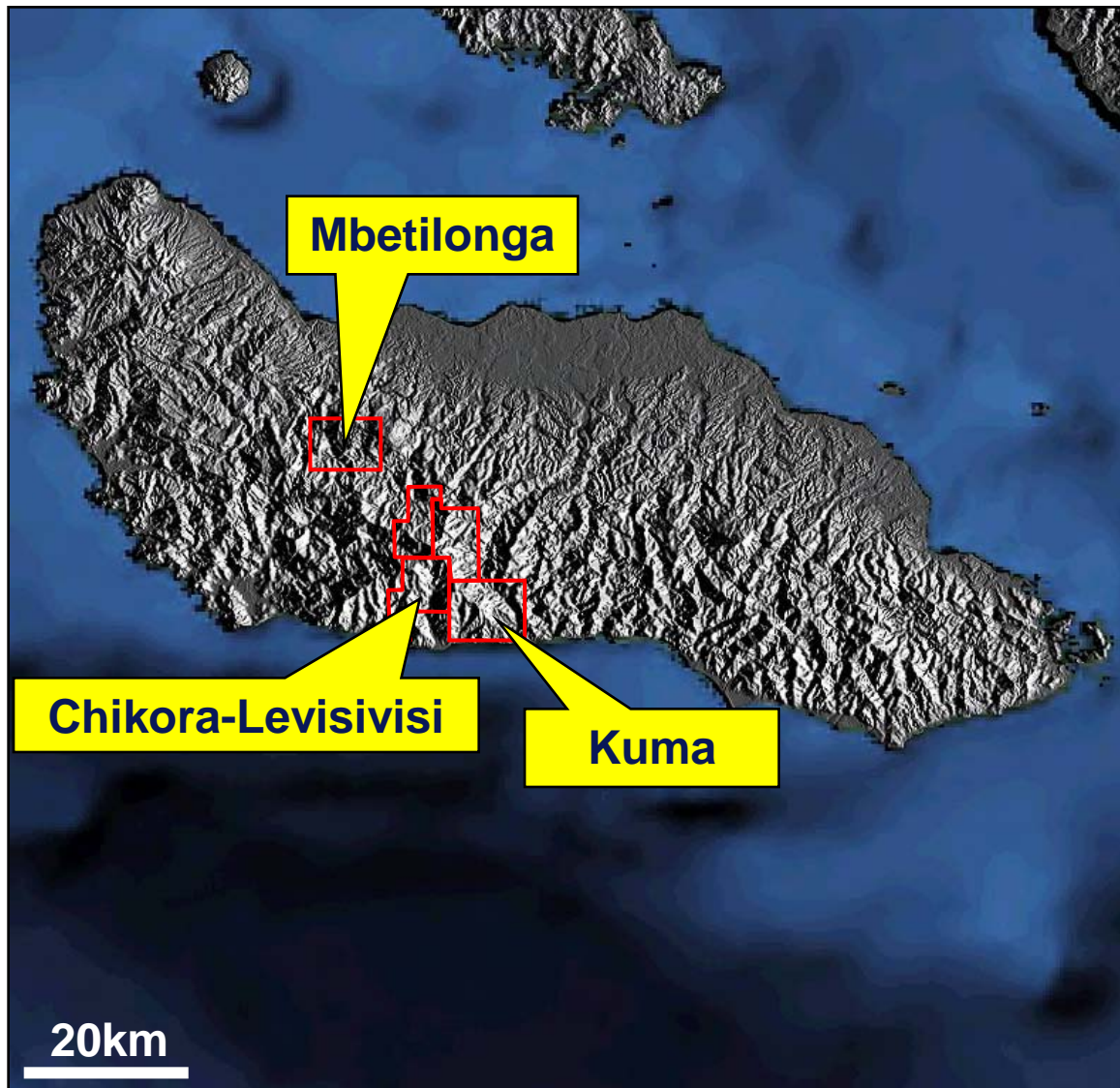
Morobe District of PNG




- Land holdings package covers ~4,940km²
- Highly prospective terrain for copper-gold porphyry deposits
- JV with Triple Plate Junction
- Over 26 anomalies identified
- 2010 focus on regional exploration and drill testing of Hides Creek prospect

Growth in APAC

Guadalcanal in the Solomons



- Five tenements ~300 km²
- JV with Solomon Gold
- Immature exploration terrain but highly prospective for porphyry copper-gold targets
- ≥4 mineralised centres identified, 3 major prospects
- Focus In 2010 on regional exploration and drill testing of the Chikora Prospect
- All 10-20minute helicopter flight from Honiara Airport



Paydirt's Gold Conference 2010: Taking Higher Ground

15 March 2010

Philip Stephenson
Regional Group Executive Operations