



Agricultural and Construction
Equipment



CNH Global N.V.

Summary North American Retail Unit Sales Activity
For Selected Agricultural and Construction Equipment
During the Month of July and Cumulative for 7 Months 2007,
and Indicators of North American Dealer Inventory Levels for Selected Agricultural
Equipment at the End of June 2007
Relative to Industry Results or Levels, Compared with Prior Year Periods

The following table summarizes selected agricultural and construction equipment industry retail unit sales results in North America as compared with prior year periods. Industry results for the current periods are expressed as a percentage change from the prior year periods, by major product category. The percentage change reflects only industry retail unit sales results and is derived from flash, or preliminary actual, data of the U.S. Association of Equipment Manufacturers ('AEM') and of the Canadian Farm and Industrial Equipment Institute ('CFIEI').

These industry data are based on unit sales as preliminarily reported by AEM and CFIEI member companies and include most, but not all, of the equipment sold in each of the categories. The data are subject to revision from time to time and caution should be maintained when using the data for any purpose. Actual results will vary and may not be known for some time. Over time, industry results will be adjusted to reflect actual sales differences, reclassifications, or other factors. Retail unit sales will fluctuate from month to month due to several factors, including timing of new products and new product introductions, product availability, and sales programs. CNH Global N.V.'s performance for the same periods is described relative to the change in industry results.

Also included in the table are indicators of North American dealer inventory levels. Industry data are derived from the flash, or preliminary actual, data of the AEM and CFIEI and expressed as the number of months of inventory on hand, based on the simple average of the previous 12 months retail unit sales results. CNH Global N.V.'s dealer's inventory levels for the same periods are described relative to the industry levels.

This information reflects point-in-time data that is not necessarily representative of either the market or of CNH Global N.V.'s relative performance going forward, nor does it reflect or imply any forward-looking information regarding the market or CNH Global N.V.'s relative performance in that market.

Copies of the relevant monthly Agricultural Flash reports from AEM and CFIEI follow the table.

SUMMARY OF NORTH AMERICAN RETAIL ACTIVITY		
CATEGORY	Total North American Industry	CNH RELATIVE PERFORMANCE (All Brands)
RETAIL UNIT SALES:		
MONTH of JULY 2007		
Agricultural Tractors:		
under 40 horsepower (2WD)	(4.7)%	Down low single digits, slightly less than the industry
40 to 100 horsepower (2WD)	+0.3%	Up high double digits, significantly better than the industry
over 100 horsepower (2WD)	+20.3%	Up high double digits, significantly better than the industry
4 wheel drive tractors	+4.4%	Up high double digits, significantly better than the industry
Sub total tractors over 40 hp	+3.0%	Up high double digits, significantly better than the industry
Total Ag tractors	(1.4)%	Up moderate double digits, significantly better than the industry
Combines	+2.8%	Up high double digits, significantly better than the industry
Loader/backhoes	Down low single digits	Down moderate double digits, significantly worse than the industry
Skid Steer Loaders	Down mid-single digits	Down low single digits, in line with the industry
Total Heavy Construction Equipment	Down low double digits	Down moderate double digits, moderately worse than the industry
RETAIL UNIT SALES:		
7 MONTHS 2007		
Agricultural Tractors:		
under 40 horsepower (2WD)	(2.5)%	Down low single digits, in line with the industry
40 to 100 horsepower (2WD)	+3.7%	Up low double digits, moderately better than the industry
over 100 horsepower (2WD)	+11.5%	Up moderate double digits, moderately better than the industry
4 wheel drive tractors	+8.8%	Up moderate double digits, significantly better than the industry
Sub total tractors over 40 hp	+5.4%	Up low double digits, moderately better than the industry
Total Ag tractors	+0.9%	Up low double digits, moderately better than the industry
Combines	+4.8%	Up moderate double digits, significantly better than the industry
Loader/backhoes	Down low double digits	Down low double digits, in line with the industry
Skid Steer Loaders	Down low double digits	Down low double digits, slightly worse than the industry
Total Heavy Construction Equipment	Down low double digits	Down moderate double digits, moderately worse than the industry
DEALER INVENTORIES:		
END OF JUNE 2007		
Agricultural Tractors:		
under 40 horsepower (2WD)	5.6— months supply	1 month less than the industry
40 to 100 horsepower (2WD)	5.3— months supply	½ month less than the industry
over 100 horsepower (2WD)	3.6— months supply	1 month more than the industry
4 wheel drive tractors	3.2— months supply	½ month less than the industry
Total tractors	5.3— months supply	½ month less than the industry
Combines	3.1— months supply	In line with the industry

Dated: August 13, 2007


[HOME](#) > [INDUSTRY TRENDS](#) > U.S. AG FLASH REPORTS >

[Member Login](#)
[About Us](#)
[AEM Offices](#)
[News & Information](#)
[Calendar](#)
[Industry Trends](#)
[InformaEcon Daily Ag Report](#)
[U.S. Ag Flash Report](#)
[Canadian Ag Flash Report](#)
[Annual Ag Business Outlook](#)
[Quarterly Trends Reports](#)
[Construction Equipment Index](#)
[Annual CE Business Outlook](#)
[Industry Resources](#)
[Economic Trends & Reports](#)
[Rental Resources](#)
[Surveys](#)
[Technical](#)
[Safety & Training](#)
[Statistics](#)
[Workforce Development](#)
[Global Public Policy](#)
[Education](#)
[Trade Shows](#)
[International Services](#)
[Councils, Bureaus,
& Committees](#)
[AEM Store](#)
[Links & Directories](#)

Industry Trends

U.S. Ag Flash Reports

July 2007 Flash Report

U.S. Unit Retail Sales

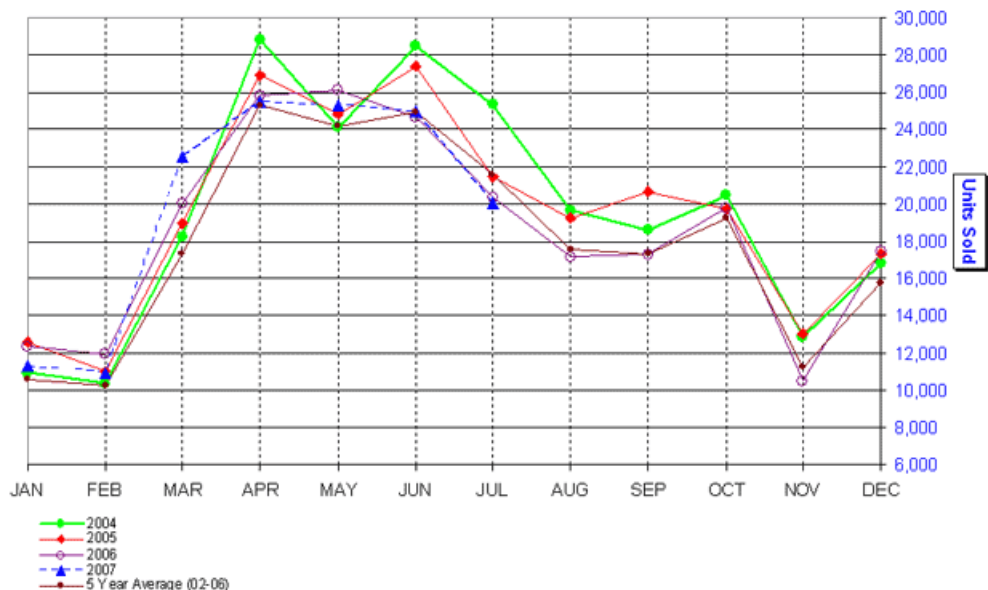
(Report released 8/10/2007)

 To download a PDF of this report, please [click here](#).

Copyright, AEM. All rights reserved. If data is referenced, please acknowledge AEM as the source.

Equipment	July 2007	July 2006	% Chg.	Y-T-D 2007	Y-T-D 2006	% Chg.	June 2007 U.S. Field Inventory
Farm Wheel Tractors - 2 Wheel Drive							
Under 40 HP	10,624	11,326	-6.2	76,202	79,479	-4.1	56,037
40 & Under 100 HP	7,261	7,209	0.7	48,140	46,277	4.0	34,285
100 HP & Over	1,187	940	26.3	11,902	10,401	14.4	5,134
Total - 2 Wheel Drive	19,072	19,475	-2.1	136,244	136,157	0.1	95,456
Total - 4 Wheel Drive	209	207	1.0	1,999	1,844	8.4	866
Total Farm Wheel Tractors	19,281	19,682	-2.0	138,243	138,001	0.2	96,322
Combines (Self-Propelled)	753	661	13.9	3,410	3,133	8.8	1,334

U.S. Unit Retail Sales 2-4 WD Tractors & Combines



These data are, in part, estimates that are subject to revisions when final detail data become available. Because of the seasonal nature of the industry, comparisons of monthly data from one period to another should be done with extreme caution. These data represent most, but not all, of the manufacturers in each product category being sold at retail in the fifty states and the District of Columbia.

Ag Flash Report is updated by the 15th of the month.

Interested in subscribing to market data reports? [Click here](#). For further information, please contact [Deb Carson](#) at 414-298-4146.

[To U.S. Ag Flash Report Archive >>](#)

© 2007, AEM
Association of Equipment Manufacturers
Toll Free: 866-AEM-0442
Click [here](#) to read our Legal and Privacy
Information
[Contact Us](#)



[Headquarters Office](#)
6737 W. Washington Street, Suite 2400
Milwaukee, WI 53214-5647
Phone: 414-272-0943 Fax: 414-272-1170


[HOME](#) > [INDUSTRY TRENDS](#) > CANADIAN AG FLASH REPORTS >

[Member Login](#)
[About Us](#)
[AEM Offices](#)
[News & Information](#)
[Calendar](#)
[Industry Trends](#)

[InformaEcon Daily Ag Report](#)
[U.S. Ag Flash Report](#)
[Canadian Ag Flash Report](#)
[Annual Ag Business Outlook](#)
[Quarterly Trends Reports](#)
[Construction Equipment Index](#)
[Annual CE Business Outlook](#)
[Industry Resources](#)
[Economic Trends & Reports](#)
[Rental Resources](#)
[Surveys](#)

[Technical](#)
[Safety & Training](#)
[Statistics](#)
[Workforce Development](#)
[Global Public Policy](#)
[Education](#)
[Trade Shows](#)
[International Services](#)
[Councils, Bureaus,
& Committees](#)
[AEM Store](#)
[Links & Directories](#)

Industry Trends

Canadian Ag Flash Reports

July 2007 Flash Report Canada Unit Retail Sales

(Report released 8/10/2007)

These data are, in part, estimates that are subject to revisions when final detail data become available. Because of the seasonal nature of the industry, comparisons of monthly data from one period to another should be done with extreme caution. These data represent most, but not all, of the manufacturers in each product category being sold at retail in the Provinces of Canada.

 To download a PDF of this report, please [click here](#).

Copyright, AEM. All rights reserved. If data is referenced, please acknowledge AEM as the source.

	July			July Y-T-D			June	
Equipment	2007	2006	% Chg.	2007	2006	% Chg.	2007 Canadian (Field) Inventory	2006 Canadian (Field) Inventory
Farm Wheel Tractors - 2 Wheel Drive								
Under 40 HP	1,078	952	13.2	7,137	5,982	19.3	5,057	5,306
40 & Under 100 HP	546	576	-5.2	3,934	3,947	-0.3	3,066	3,190
100 HP & Over	270	271	-0.4	2,183	2,234	-2.3	1,369	1,579
Total - 2 Wheel Drive	1,894	1,799	5.3	13,254	12,163	9.0	9,492	10,075
Total - 4 Wheel Drive	30	22	36.4	450	407	10.6	154	186
Total Farm Wheel Tractors	1,924	1,821	5.7	13,704	12,570	9.0	9,646	10,261
Combines (Self-Propelled)	284	348	-18.4	767	854	-10.2	716	901

These data are, in part, estimates that are subject to revisions when final detail data become available. Because of the seasonal nature of the industry, comparisons of monthly data from one period to another should be done with extreme caution.

Ag Flash Report is updated by the 15th of the month.

 Interested in subscribing to market data reports? [Click here](#). For further information, please contact Deb Carson at 414-298-4146.

[Go To Canadian Ag Flash Reports Archive >>](#)

© 2007, AEM
 Association of Equipment Manufacturers
 Toll Free: 866-AEM-0442
 Click [here](#) to read our Legal and Privacy
 Information
[Contact Us](#)



[Headquarters Office](#)
 6737 W. Washington Street, Suite 2400
 Milwaukee, WI 53214-5647
 Phone: 414-272-0943 Fax: 414-272-1170

